

MINIMUM SHOULDER TAPER LENGTH = L/3 (feet)

SHOULDER WIDTH (feet)	Posted Speed (mph)									
	25	30	35	40	45	50	55	60	65	70
8'	40	40	60	90	120	130	150	160	170	190
10'	40	60	90	90	150	170	190	200	220	240

USE A MINIMUM 3 DEVICES TAPER FOR SHOULDER LESS THEN 8'.

SIGN SPACING = X (1)

FREEWAYS & EXPRESSWAYS	55 / 70 MPH	1500' ±
RURAL HIGHWAYS	60 / 65 MPH	800' ±
RURAL ROADS	45 / 55 MPH	500' ±
RURAL ROADS & URBAN ARTERIALS	35 / 40 MPH	350' ±
RURAL ROADS & URBAN ARTERIALS	25 / 30 MPH	200' ± (2)
RESIDENTIAL & BUSINESS DISTRICTS		
URBAN STREETS	25 MPH OR LESS	100' ± (2)

(1) ALL SPACING MAY BE ADJUSTED TO ACCOMMODATE INTERCHANGE RAMP, AT-GRADE INTERSECTIONS AND DRIVEWAYS.
 (2) THIS SPACING MAY BE REDUCED IN URBAN AREAS TO FIT ROADWAY CONDITIONS.

CHANNELIZATION DEVICE SPACING (feet)

MPH	TAPER	TANGENT
50/70	40	80
35/45	30	60
25/30	20	40

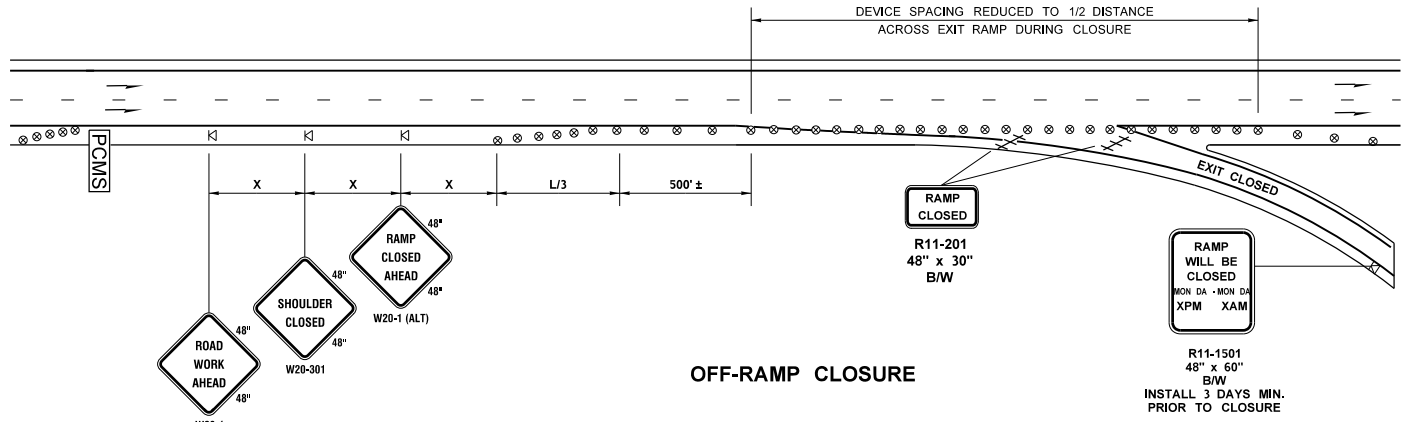
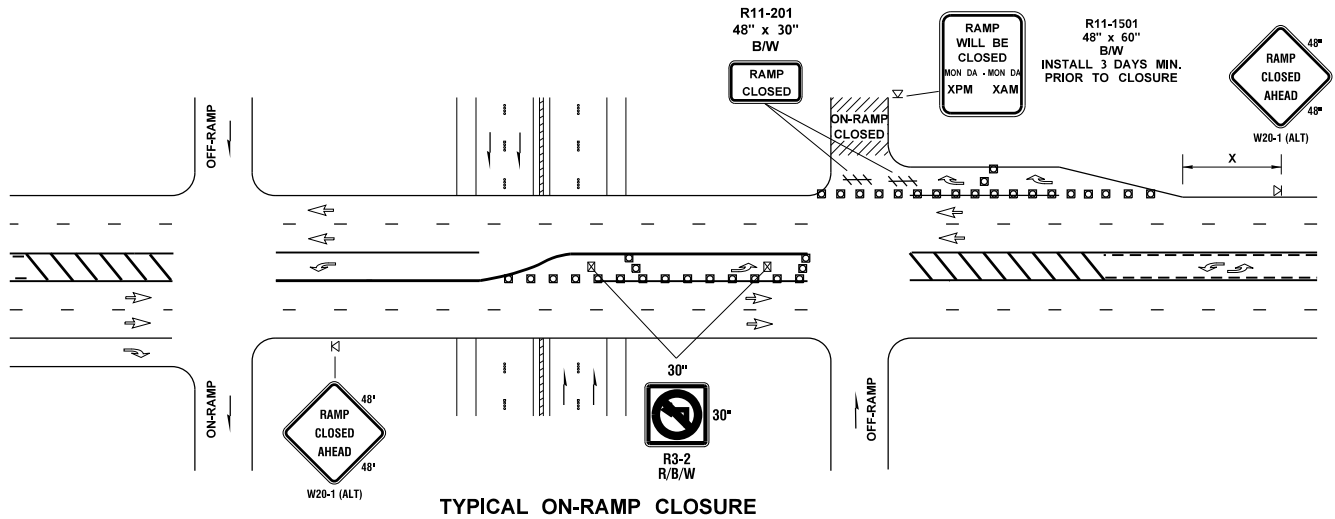
PCMS

1	2
EXIT XXX CLOSED	USE EXIT XXX
2.0 SEC	2.0 SEC

FIELD LOCATE

LEGEND

- TYPE 3 BARRICADE
- K TEMPORARY SIGN LOCATION
- CHANNELIZING DEVICES
- ⊗ TRAFFIC SAFETY DRUM
- PCMS PORTABLE CHANGEABLE MESSAGE SIGN
- ⊠ TEMPORARY SIGN LOCATION (5' MOUNTING HEIGHT)



SHORT TERM RAMP CLOSURES

NOT TO SCALE

NOTES

- SEE SPECIAL PROVISIONS FOR CLOSURE HOUR RESTRICTIONS.
- TYPICAL APPLICATION SHOWN. ADJUST FOR SITE CONDITIONS.
- ALL SIGNS ARE BLACK ON ORANGE UNLESS OTHERWISE DESIGNATED.

FILE NAME	S:\Design R P& S\4-Standards\2-Plan Sheet Library\01-Published PSL\TC Work Zone Traffic Control\TC-13 Short Term Ramp Closure\TC-13.dgn			REGION NO.	STATE	FED.AID PROJ.NO.	<p>Washington State Department of Transportation</p>	Plot 1
TIME	8:40:40 AM			WASH				PLAN REF NO TC13
DATE	1/2/2018			JOB NUMBER			SHEET OF SHEETS	
PLOTTED BY	liddelf			CONTRACT NO.	LOCATION NO.			
DESIGNED BY								
ENTERED BY								
CHECKED BY								
PROJ. ENGR.								
REGIONAL ADM.	REVISION	DATE	BY	P.E. STAMP BOX	DATE	P.E. STAMP BOX	TRAFFIC CONTROL PLAN	