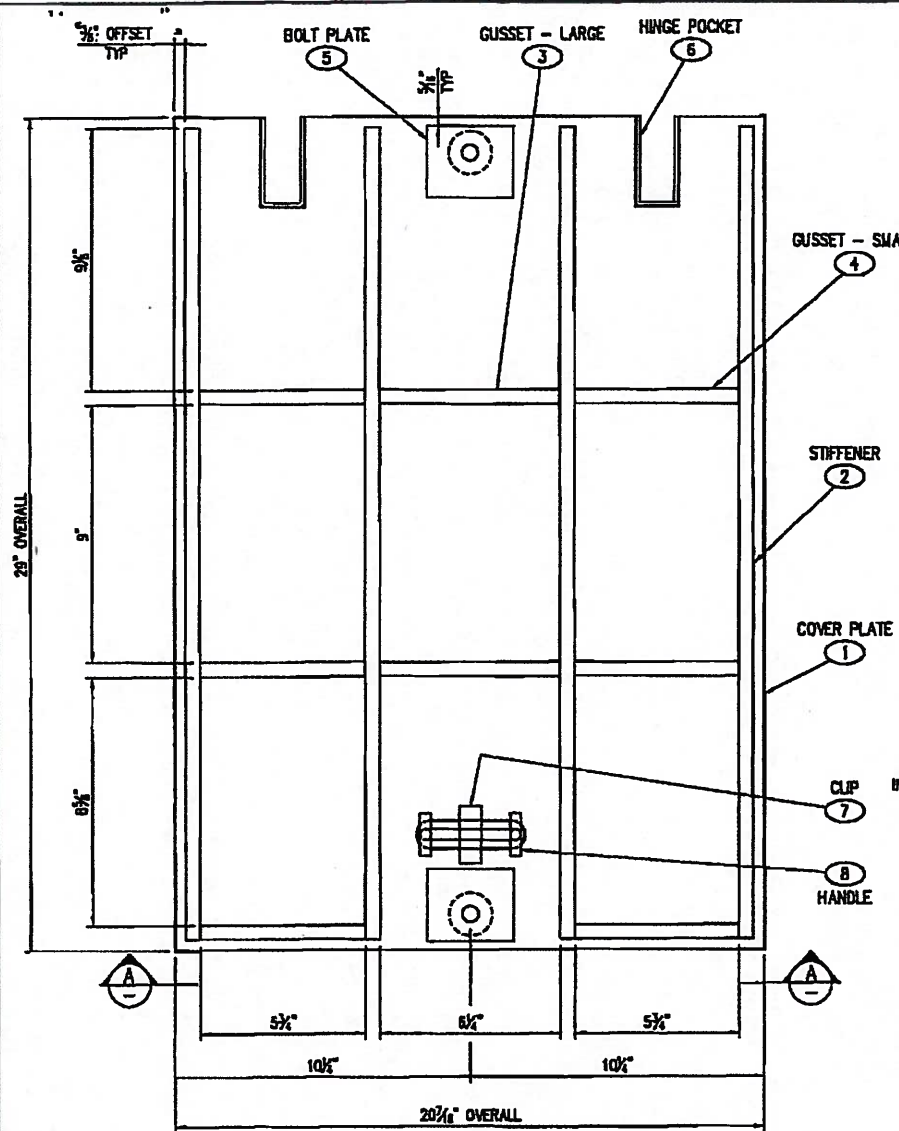
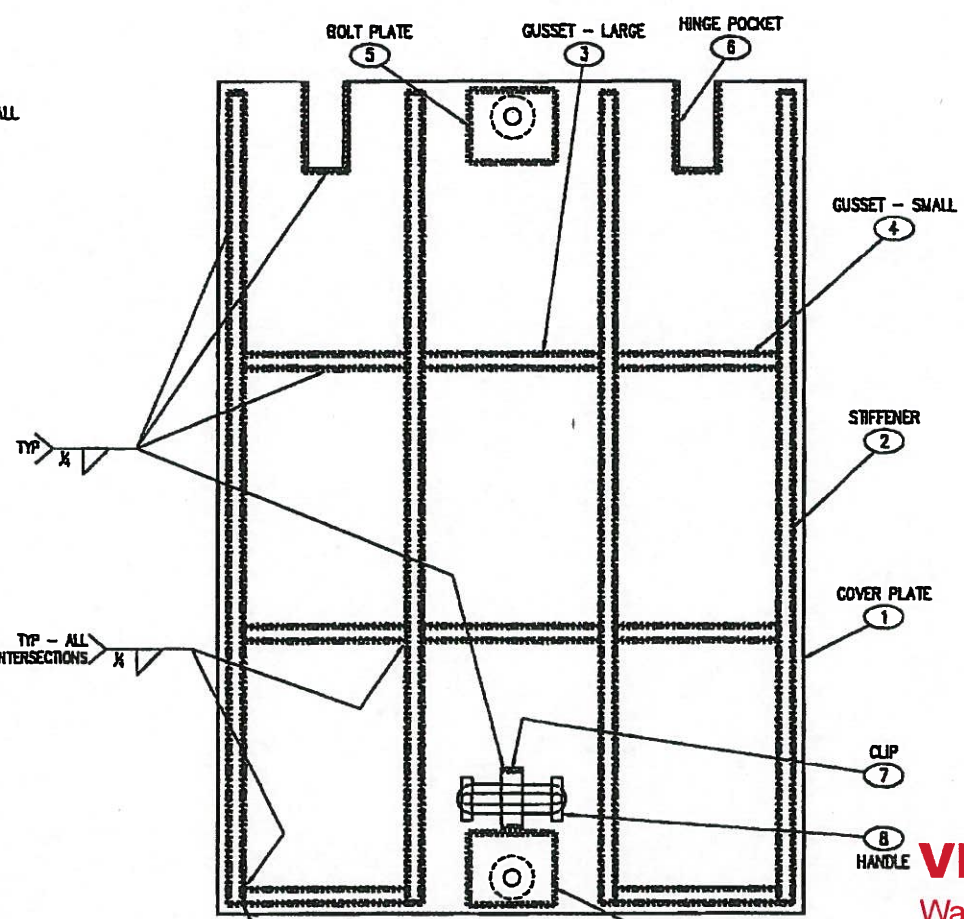


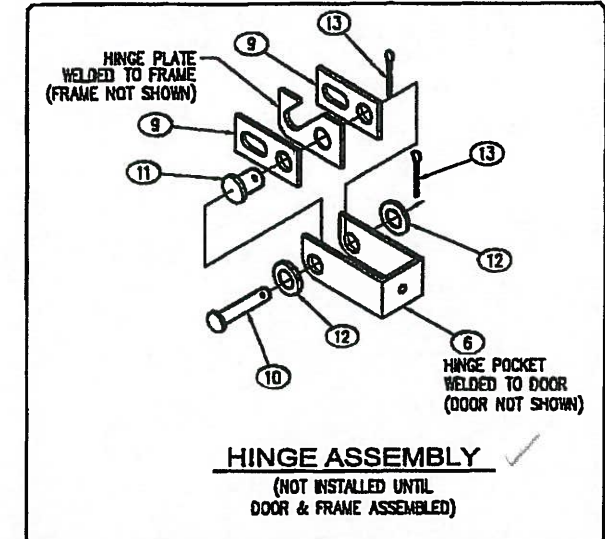
LTR.	REVISION	DATE	BY
A	REVISED PER CUSTOMER RED MARKS	2/15/05	JG
B	REVISED BOM	4/6/05	JG
C	REVISED BOM	1/22/07	TMB
D	NO CHANGES	2/5/07	TMB
E	REVISED BOM	3/2/07	TMB
F	ADDED HINGE ASSEMBLY DETAIL	4/17/07	TMB
G	NO CHANGES	6/4/07	TMB



PLAN VIEW
TYPE 6 DOOR - LAYOUT
(UNDERSIDE OF DOOR)
COMPLETE SET = (2) DOORS

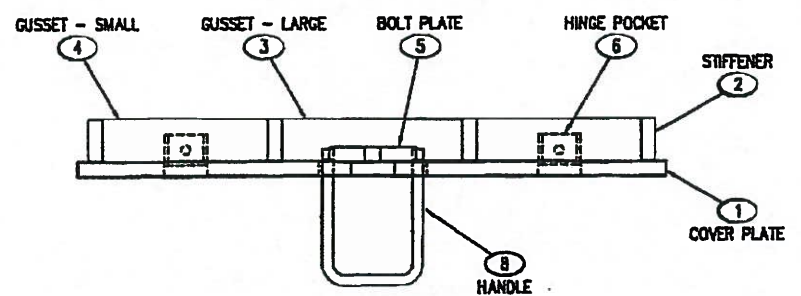


PLAN VIEW
TYPE 6 DOOR - WELDMENT
(UNDERSIDE OF DOOR)
COMPLETE SET = (2) DOORS



VERIFIED

Washington State Department of Transportation
HQ Traffic Operations Office
BY: *[Signature]* DATE: 11/14/16



VIEW AA

STRUCTURAL NOTES

- MATERIAL: ASTM A36 STRUCTURAL STEEL STANDARDS
- ASSEMBLY: AWS D1.1 WELDING STANDARDS
- MATERIAL FOR LID, FRAME & GUSSET:
LID: ASTM A786 DIAMOND PLATE ROLLED FROM PLATE COMPLYING WITH ASTM A572, GRADE 50 OR ASTM A588, BOTH WITH MIN. CVN TOUGHNESS OF 20 ft-lb AT 40° F
FRAME & STIFFENER PLATES: ASTM A572, GRADE 50 OR ASTM A588, BOTH WITH MIN. CVN TOUGHNESS OF 20 ft-lb AT 40° F
HANDLE: ASTM A36 STEEL
ANCHORS (STUDS): SECTION 9-06.15
BOLTS, NUTS, WASHERS: ASTM F593 OR A193, TYPE 304 OR 316

SHOP NOTE:
GRIND ALL SHARP EDGES

TOLERANCE NOTE:
OVERALL DIMENSIONS HAVE A MAXIMUM ALLOWABLE TOLERANCE OF ± 1/16"

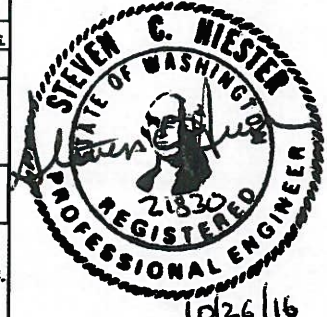
APPROVED
Washington State
Department of Transportation
HQ Traffic Operations Office
DATE August 8, 2007 TAT

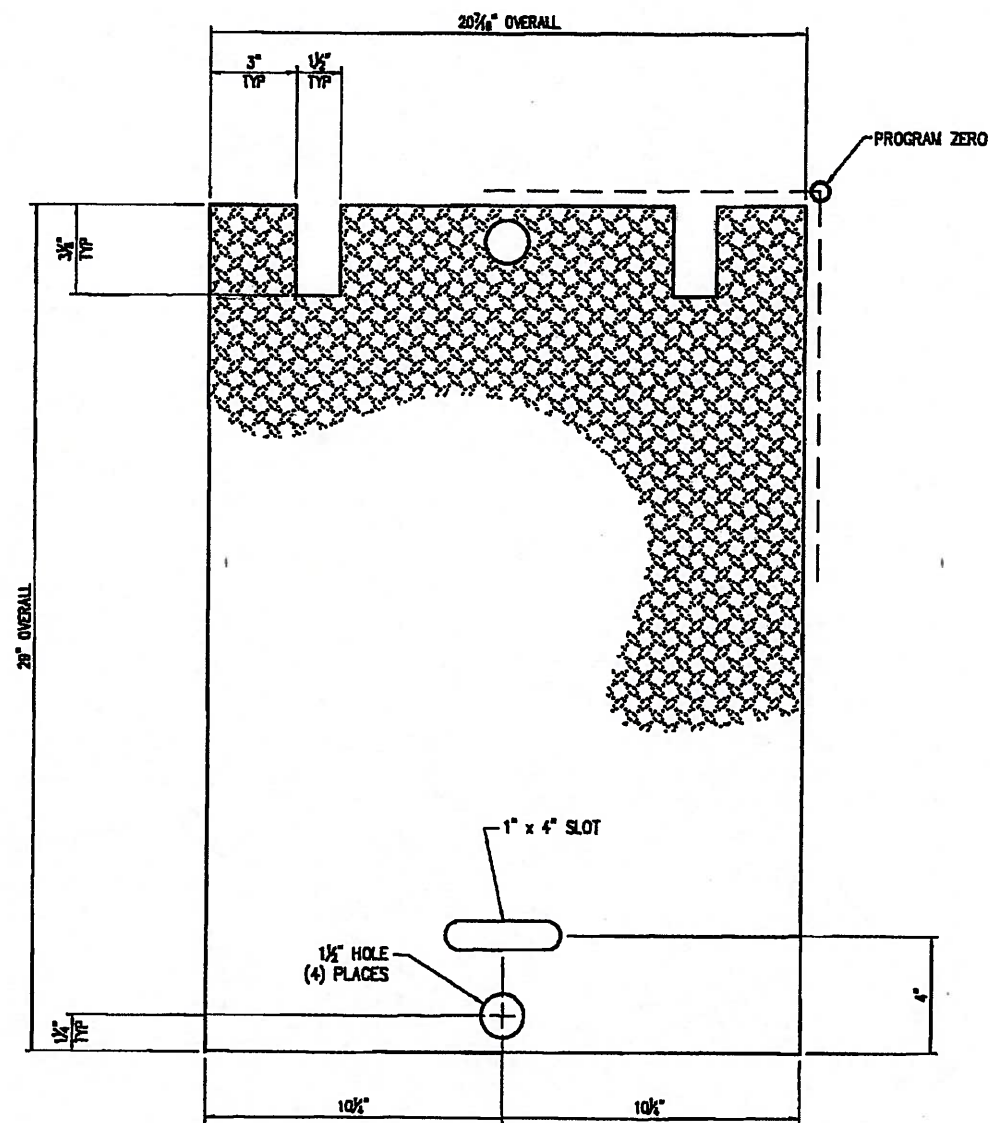
NOTES

- COVER TO BE PAINTED AFTER FABRICATION
- ALL WELDS TO BE 3/16" FILLET WELDS UNLESS OTHERWISE NOTED
- ASSEMBLY PARTS PROVIDED BY WILSONVILLE (NOT SHOWN):
9 SS HINGE SIDE PLATE
10 SS HINGE PIN
11 SS HINGE PIN
12 SS WASHER
13 SS COTTER PIN
14 SS RETAINING BOLT

PART LIST (2 DOORS/1SET)							B.O.M.	
PART	PART NAME	DESCRIPTION	CUT SIZE	QTY.	LV.No.	TOTAL		
1	COVER PLATE	DIAMOND PLATE, 72" x 120" x 1/2"	(SEE SHIT 2)	2	5540085	16.00	lb	
2	STIFFENER	FLATBAR, 1/2" x 1 5/8"	28 1/4"	8		52.00	lb	
3	GUSSET - LARGE	FLATBAR, 1/2" x 1 5/8"	6 1/4"	4		5.76	lb	
4	GUSSET - SHORT	FLATBAR, 1/2" x 1 5/8"	5 3/4"	12		15.84	lb	
5	BOLT PLATE		(SEE SHIT 3)	4		4.00	ea	
6	HINGE POCKET	11 GA. FLATBAR		4	5310040	4.00	ea	
7	CLIP	FLATBAR, 3/16" x 3/4"	2"	2	5520027	0.16	lb	
8	HANDLE	ROD, 1/2"	(SEE SHIT3)	2		2.00	ea	
9	SS HINGE SIDE PLATE	PLATE, 2-1/2" x 1-1/4"		8		8.00	ea	
10	SS CLEVIS HINGE PIN	PIN, 3/8" x 2 1/4"		4		4.00	ea	
11	SS CLEVIS HINGE PIN	PIN, 1/2" x 1"		4		4.00	ea	
12	SS WASHER	WASHER, 9/16"		8		8.00	ea	
13	SS COTTER PIN	COTTER PIN, 2"		8		8.00	ea	
14	SS RETAINING BOLT	1/2" x 1-1/2"		4		4.00	ea	

ITEM	QUANTITY	PART	DESCRIPTION	QUAN.	SIZE	TOTAL WT. LBS.
SALES INFORMATION						
CUSTOMER STANDARD PRODUCT		J11 TYPE 6 COVER - LAYOUT & WELDMENT				
SALES		WSDOT				
DRAWN JG	LINE #	SCALE 3/4"=1'-0"	APPROVED	DWG NO.	REV.	
CHECKED	DATE 6/21/04	SHEET 1 OF 5	WEIGHT	CC-0406	G	
<small>THIS DOCUMENT IS THE PROPERTY OF OLDCASTLE PRECAST, INC. IT IS LOANED TO YOUR FIRM FOR YOUR USE ONLY AND SHALL NOT BE USED IN ANY WAY IN VIOLATION OF THE INTERESTS OF OLDCASTLE PRECAST, INC. COPYRIGHT © 2004 Oldcastle Precast, Inc. All Rights Reserved.</small>						



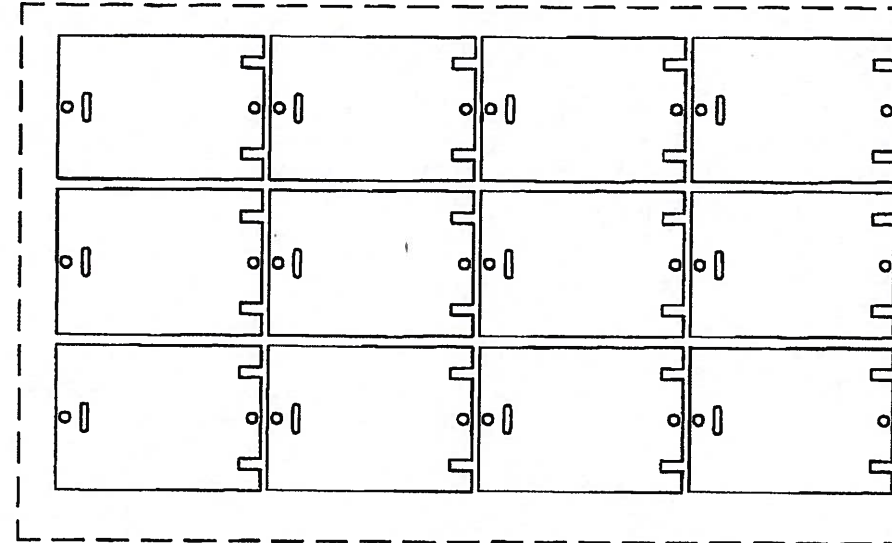


PLAN VIEW
TYPE 6 DOOR - CUT LAYOUT

NOTES:

1. MATERIAL: 1/2" DIAMOND PLATE (SEE STRUCTURAL NOTE 3, SHEET 1 OF 5)
2. LAYER CUTA IS FOR SINGLE CUT PROGRAM (CC-0406A)
3. LAYER CUTB IS FOR MULTIPLE CUT PROGRAM (CC-0406B) - SEE DETAIL

LTR.	REVISION	DATE	BY
A	ADD SHOP NOTE	2/15/05	JG
C	NO CHANGES	1/22/07	TMB
D	NO CHANGES	2/5/07	TMB
E	NO CHANGES	3/2/07	TMB
F	NO CHANGES	4/17/07	TMB
G	NO CHANGES	6/4/07	TMB



DETAIL
MATERIAL: 1/2" DIAMOND PLATE
72" x 120" SHEET

SHOP NOTE:
CUT WITH DIAMOND PLATE FACE DOWN.
ADJUST KERF OFFSET WHEN CUTTING TO APPROX. .08 TO MAINTAIN OVERALL DIMENSIONS. CUT 1 TEST DOOR TO ENSURE OFFSET IS CORRECT.

VERIFIED

Washington State Department of Transportation
HQ Traffic Operations Office

BY: *[Signature]* DATE: 11/14/16

APPROVED

Washington State
Department of Transportation
HQ Traffic Operations Office

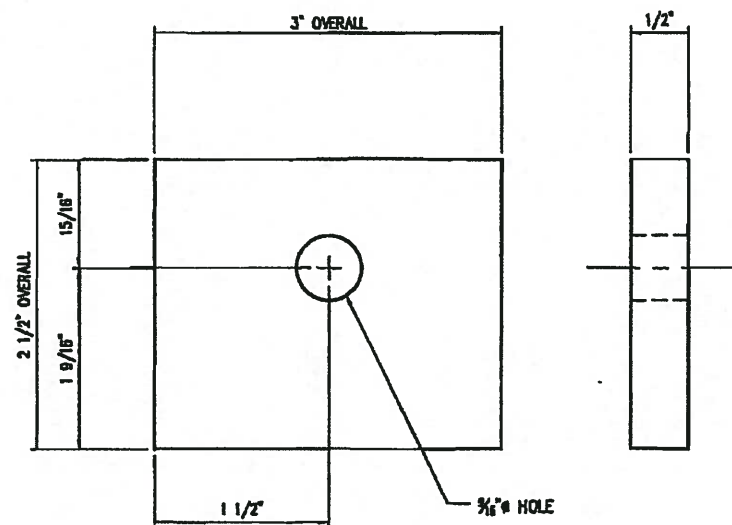
DATE August 8, 2007 TAT

ITEM	QUANTITY	PART	DESCRIPTION	QUAN.	SIZE	TOTAL WT. LBS.
BILL OF MATERIAL						
SALES INFORMATION		J11 TYPE 6 COVER - CUT LAYOUT				
CUSTOMER STANDARD PRODUCT		WSDOT				
SALES	S.O. #	SCALE 3"=1'-0"		APPROVED	DWG NO.	REV.
DRAMA JG	LINE #	SHEET 2 OF 5		WEIGHT	CC-0406	G
CHECKED	DATE 6/21/04					
THIS DOCUMENT IS THE PROPERTY OF OLDCASTLE PRECAST, INC. IT IS LOANED TO YOUR COMPANY FOR YOUR USE ONLY AND SHALL NOT BE USED IN ANY WAY WITHOUT THE WRITTEN PERMISSION OF OLDCASTLE PRECAST, INC. COPYRIGHT © 2004 Oldcastle Precast, Inc. All Rights Reserved.		UTILITY VAULT™ PO Box 588 Auburn, WA 98071-0588 Ph: 800-853-1538 Fax: 253-725-0284		a division of Oldcastle Precast, Inc.		

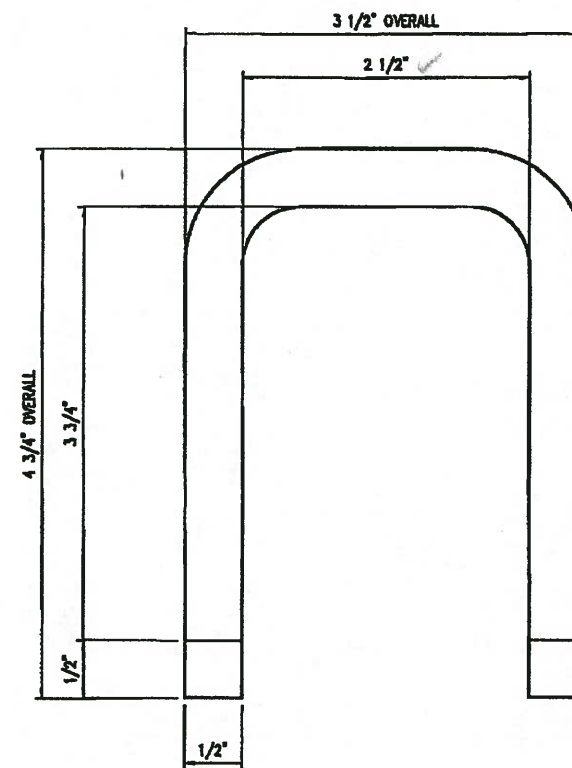


10/26/16

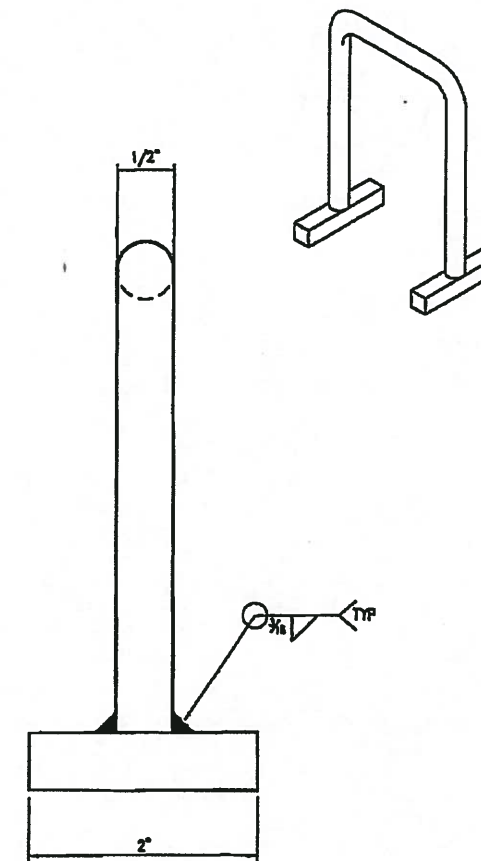
LTR.	REVISION	DATE	BY
A	MODIFIED BOLT PLATE FOR EASE OF WELDING	2/15/05	JG
B	REVISED BOM	4/6/05	JG
C	NO CHANGES	1/22/07	TMB
D	NO CHANGES	2/5/07	TMB
E	CHANGED HANDLE TO 1/2" ROD	3/2/07	TMB
F	NO CHANGES	4/17/07	TMB
G	NO CHANGES	8/4/07	TMB



PLAN VIEW
BOLT PLATE



PLAN VIEW
HANDLE



PART LIST					B.O.M.	
PART	PART NAME	DESCRIPTION	CUT SIZE	QTY.	UV No.	TOTAL
1	BOLT PLATE	FLATBAR, 1/2" x 2 1/2"	3"	4		4.25 lbs
2	HANDLE	ROD, 1/2"	11"	2	5520222	0.94 lbs
3	HANDLE RETAINER	SQUARE BAR 3/8"	2"	4	5520220	0.31 lbs

VERIFIED

Washington State Department of Transportation
HQ Traffic Operations Office

BY: [Signature] DATE: 11/14/16

APPROVED

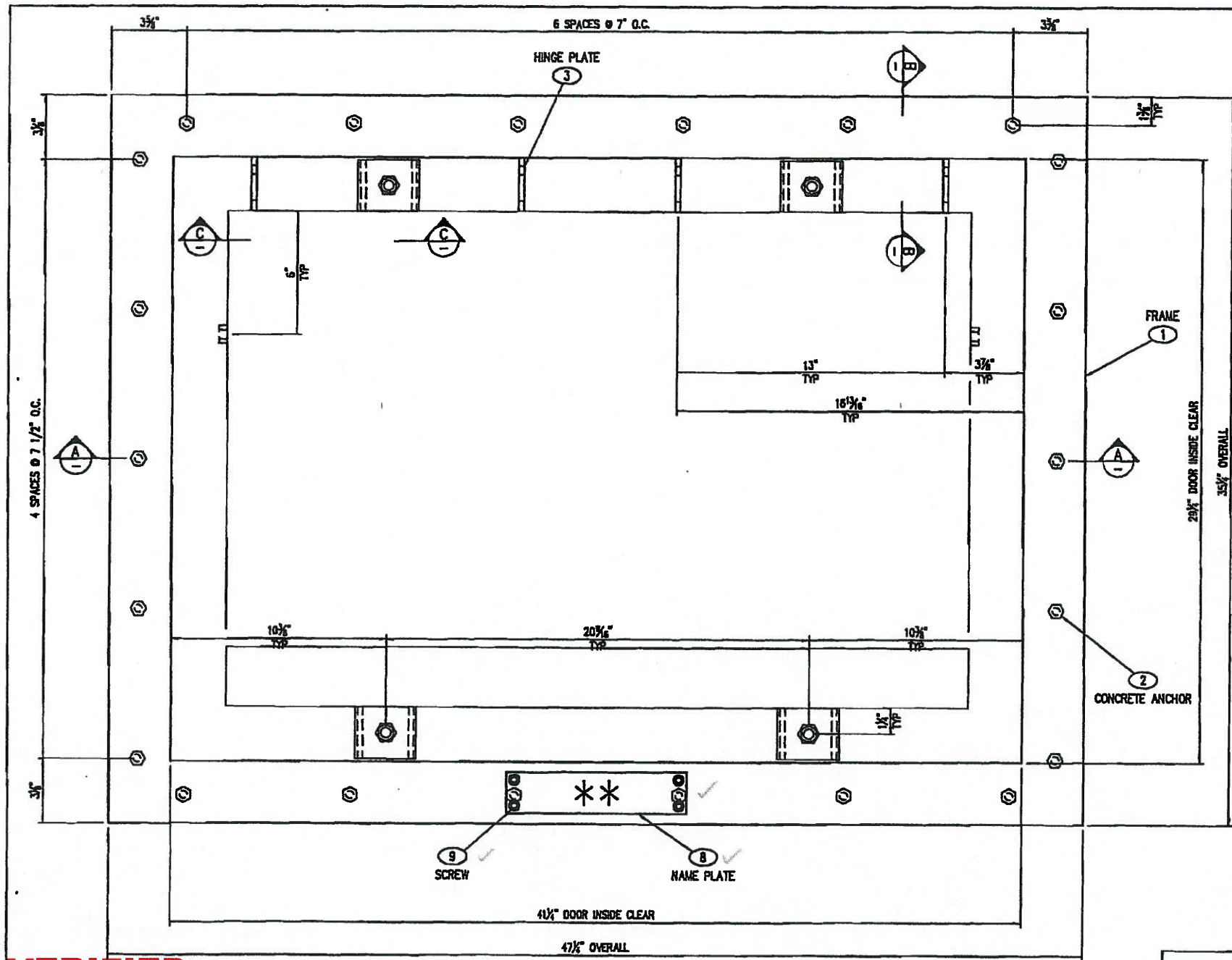
Washington State
Department of Transportation
HQ Traffic Operations Office

DATE August 8, 2007 TAT

ITEM	QUANTITY	PART	DESCRIPTION	QUAN.	SIZE	TOTAL WGT. LBS.
BILL OF MATERIAL						
SALES INFORMATION		TYPE 6 COVER -- PART LAYOUT				
CUSTOMER STANDARD PRODUCT		STANDARD PRODUCT				
SALES	S.O. #	SCALE FULL	APPROVED	DWG NO.	REV.	
DRAWN JG	LINE #	SHEET 3 OF 5	WEIGHT	CC-0406	G	
CHECKED	DATE 6/21/04					
<small>THIS DOCUMENT IS THE PROPERTY OF OLDCASTLE PRECAST, INC. IT IS LOANED TO YOU FOR YOUR USE ONLY AND SHALL NOT BE USED IN ANY WAY UNLESS TO THE INTERESTS OF SAID COMPANY. COPYRIGHT © 2004 Oldcastle Precast, Inc. All Rights Reserved.</small>						
			<small>Oldcastle Precast, Inc.</small>			



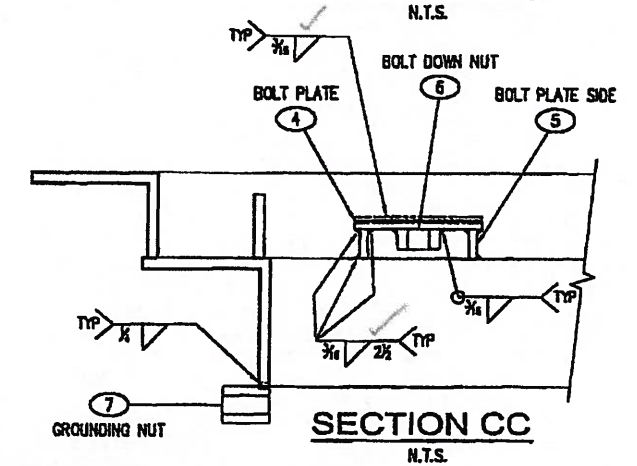
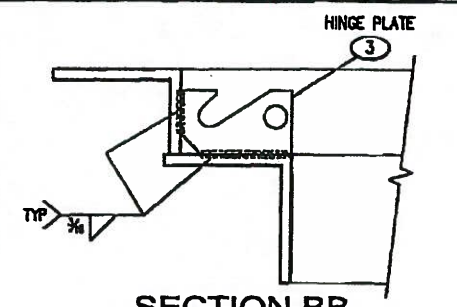
10/26/16



REV.	REVISION	DATE	BY
A	REVISED PER CUSTOMER RED MARKS	2/15/05	JG
B	REVISED BOM	4/6/05	JG
C	NO CHANGES	1/22/2007	TMB
D	CHANGED GROUNDING NUT TO A 3/8\"/>		
E	NO CHANGES	3/2/07	TMB
F	NO CHANGES	4/17/07	TMB
G	ADDED NAME PLATE	6/4/07	TMB

SHOP NOTE:
GRIND ALL SHARP EDGES

TOLERANCE NOTE:
OVERALL DIMENSIONS HAVE A MAXIMUM ALLOWABLE TOLERANCE OF $\pm 1/16$ "



STRUCTURAL NOTES

1. MATERIAL: ASTM A36 STRUCTURAL STEEL STANDARDS
2. ASSEMBLY: AWS D1.1 WELDING STANDARDS
3. SEE STRUCTURAL NOTE 3, SHEET 1 OF 5

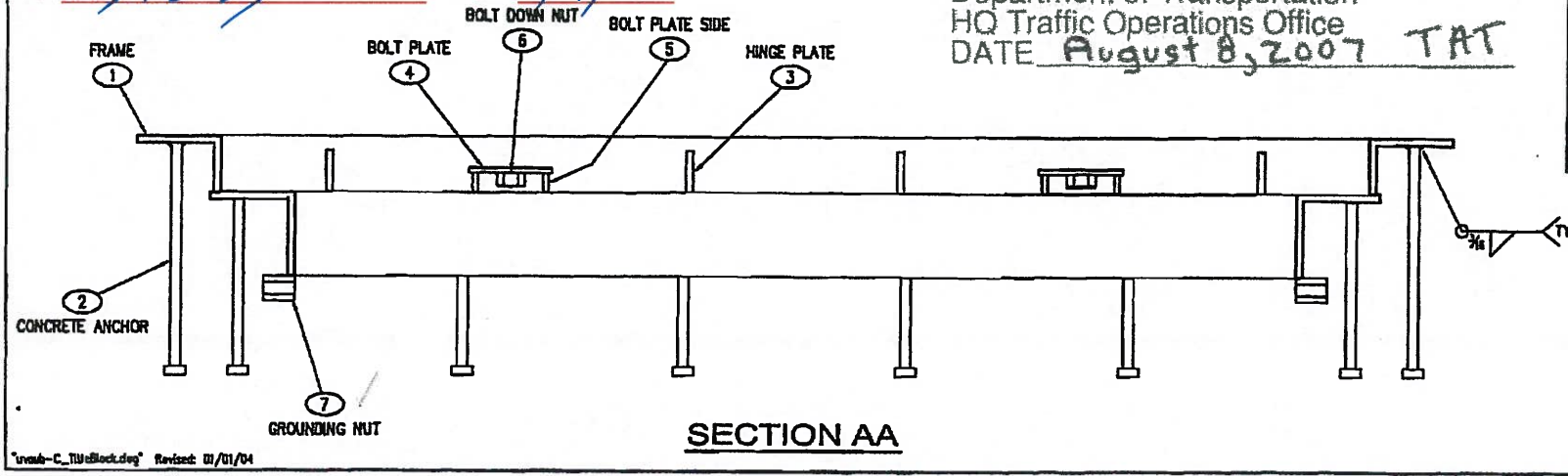
NOTES

1. FRAME TO BE PAINTED AFTER FABRICATION
 2. ALL WELDS TO BE 3/16" FILLET WELDS UNLESS OTHERWISE NOTED
 3. BOND LID TO FRAME - SEE NOTE 11, ON WSDOT DETAIL SHEET
 4. PARTS PROVIDED BY WILSONVILLE:
- (9) SCREW

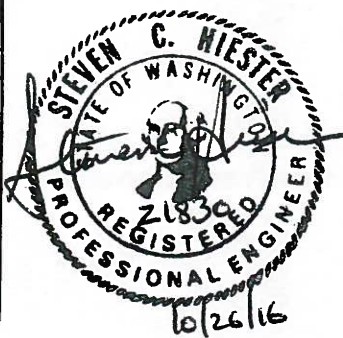
VERIFIED
Washington State Department of Transportation
HQ Traffic Operations Office
BY: *[Signature]* DATE: 11/14/16

APPROVED AS NOTED
Washington State Department of Transportation
HQ Traffic Operations Office
DATE August 8, 2007 TAT

PART LIST					B.O.M.	
PART	PART NAME	DESCRIPTION	CUT SIZE	QTY.	UV No.	TOTAL
1	FRAME	(SEE SHEET 2 FOR ASSEMBLY)	---	1	---	1
2	CONCRETE ANCHOR	STUD. 6x1 1/2" x 8" GALV. PER 9-06.15	---	22	5910445	22 ea
3	HINGE PLATE	FLATBAR, 2 3/4" x 1 1/2"	---	4	5210800	4 ea
4	BOLT PLATE	FLATBAR, 1/4" x 3"	2 1/2"	4	5520189	2.12 lbs
5	BOLT PLATE SIDE	FLATBAR, 1/4" x 3"	11/16"	8	5520189	1.17 lbs
6	BOLT DOWN NUT	HEX NUT, 1/2" SS	---	4	---	4 ea
7	GROUNDING NUT	COUPLER NUT, 3/8" x 1-1/8", SS	---	2	---	2 ea
8	NAME PLATE	FLATBAR 1/8" x 2", SS	(SEE SH 5)	1	---	---
9	SCREW	1/4"-20 x 3/4" ALLEN FLATHEAD, SS	---	4	---	---



ITEM	QUANTITY	PART	DESCRIPTION	QUAN.	SIZE	TOTAL WT. LBS.
SALES INFORMATION						
CUSTOMER STANDARD PRODUCT		J11 TYPE 6 FRAME - LAYOUT & WELDMENT				
SALES S.O. #		WSDOT				
DRAWN JG	LIVE #	SCALE 3"=1'-0"	APPROVED	DWG NO.	REV.	
CHECKED	DATE 6/23/04	SHEET 4 OF 5	WEIGHT	CC-0406	G	

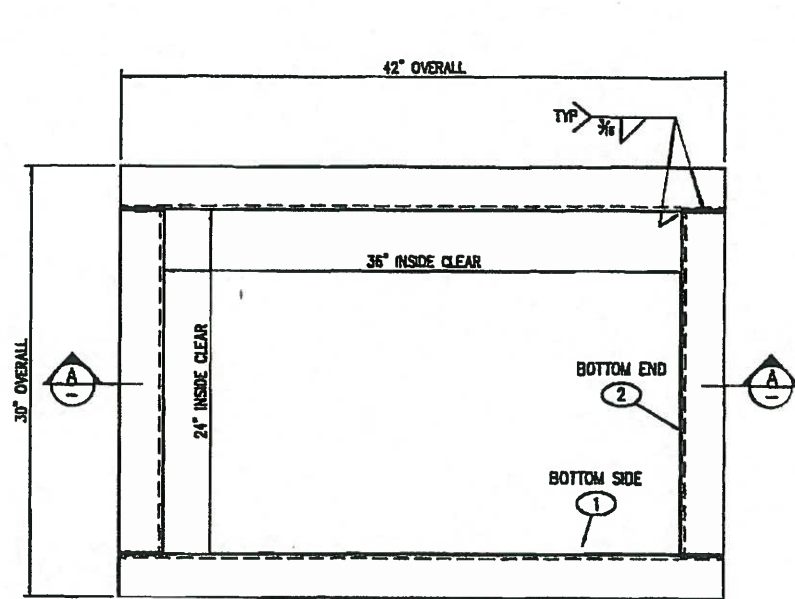


uv-c_tjw@oldcast.com Revised: 01/01/04

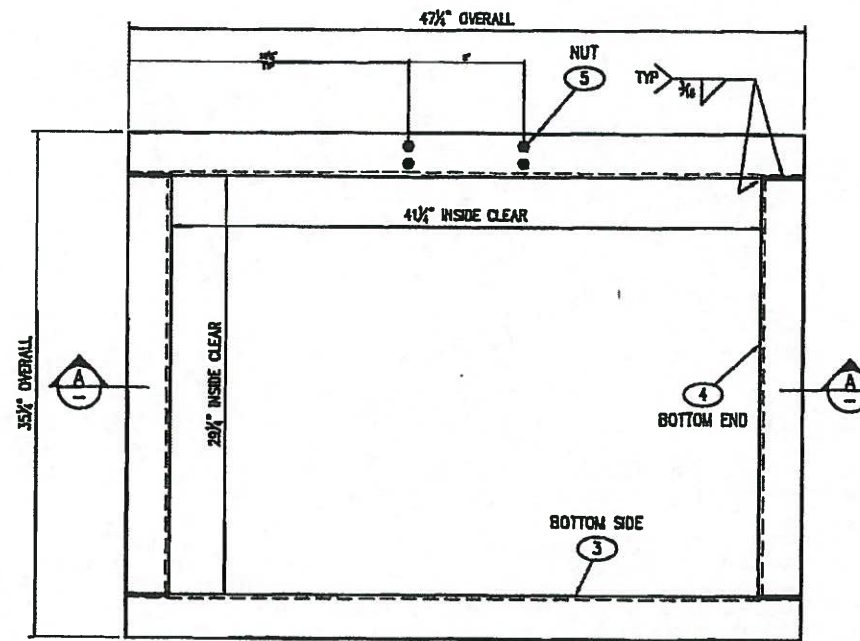
UTILITY VAULT™
a division of
Oldcastle Precast, Inc.

10/26/16

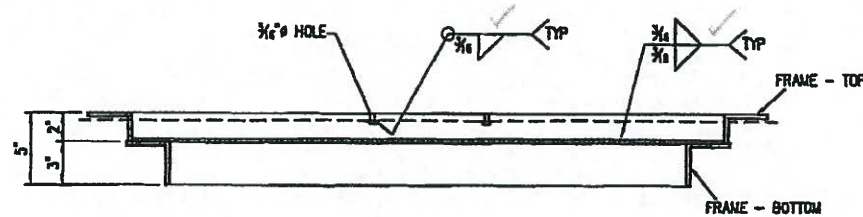
REV.	REVISION	DATE	BY
A	REVISED PER CUSTOMER RED MARKS	2/15/05	JG
B	REVISED BOM	4/6/05	JG
C	NO CHANGES	1/22/07	TMB
D	NO CHANGES	2/5/07	TMB
E	NO CHANGES	3/2/07	TMB
F	NO CHANGES	4/17/07	TMB
G	ADDED NAME PLATE	6/4/07	TMB



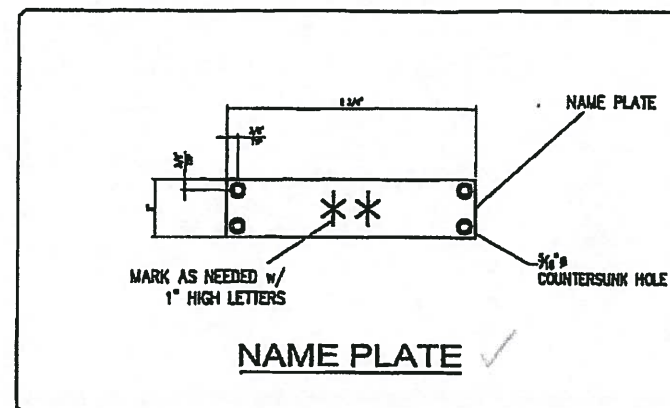
PLAN VIEW
TYPE 6 FRAME - BOTTOM



PLAN VIEW
TYPE 6 FRAME - TOP



SECTION AA



VERIFIED

Washington State Department of Transportation
HQ Traffic Operations Office

BY: *[Signature]* DATE: 11/14/16

APPROVED

Washington State
Department of Transportation
HQ Traffic Operations Office

DATE August 8, 2007 TAT

PART LIST					B.O.M.	
PART	PART NAME	DESCRIPTION	CUT SIZE	QTY.	UV No.	TOTAL
1	FRAME - SIDE BOTTOM	ANGLE, 3" x 3" x 1/4"	42"	2		34.30 lbs
2	FRAME - END BOTTOM	ANGLE, 3" x 3" x 1/4"	24"	2		18.80 lbs
3	FRAME - SIDE TOP	ANGLE, 2" x 3" x 1/4"	47 1/4"	2		32.28 lbs
4	FRAME - END TOP	ANGLE, 2" x 3" x 1/4"	29 1/4"	2		18.88 lbs
5	NUT	1/4"-20 HEX NUT, SS		4		
* 8	NAME PLATE	FLATBAR 1/8" x 2", SS	8 3/4"	1		

* SPECIAL ORDER: FLATBAR 1/8" x 2", STAINLESS

SHOP NOTE:
GRIND ALL SHARP EDGES

TOLERANCE NOTE:
OVERALL DIMENSIONS HAVE A MAXIMUM
ALLOWABLE TOLERANCE OF $\pm 1/16"$

STRUCTURAL NOTES

- MATERIAL: ASTM A36 STRUCTURAL STEEL STANDARDS
- ASSEMBLY: AWS D1.1 WELDING STANDARDS
- SEE STRUCTURAL NOTE 3, SHEET 1 OF 5

ITEM	QUANTITY	PART	DESCRIPTION	QUAN.	SIZE	TOTAL WT. LBS.
SALES INFORMATION						
CUSTOMER		J11 TYPE 6 FRAME - FRAME LAYOUT				
STANDARD PRODUCT		WSDOT				
BRANN	JG	LINE #	SCALE 1 1/2"=1'-0"	APPROVED	DWG NO.	REV.
CHECKED	DATE 6/23/04	SHEET 5 OF 5	WEIGHT	CC-0406	G	
<small>THIS DOCUMENT IS THE PROPERTY OF OLDCASTLE PRECAST, INC. IT IS LOANED TO YOU FOR YOUR USE ONLY AND SHALL NOT BE USED IN ANY WAY UNLESS TO THE INTERESTS OF SAID COMPANY. COPYRIGHT © 2004 Oldcastle Precast, Inc. All Rights Reserved.</small>						



10/26/16