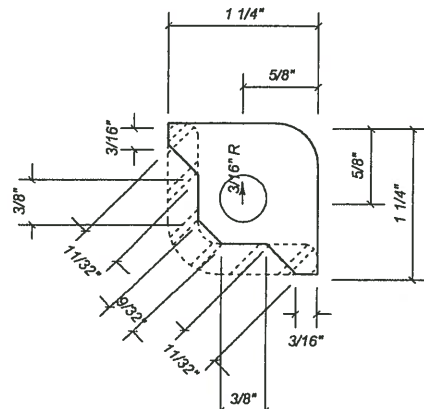


THE INFORMATION CONTAINED IN THIS DRAWING IS THE SOLE PROPERTY OF COBALT UTILITY PRODUCTS, INC. ANY REPRODUCTION IN PART OR WHOLE WITHOUT THE WRITTEN PERMISSION OF COBALT UTILITY PRODUCTS, INC. IS PROHIBITED

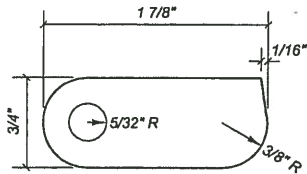
This assembly is constructed and tested to conform with FHWA (USDOT - Federal Highways Administration) for approval as a revision to the WSDOT Standard Specifications:

- 9-29.2(5) Testing Requirements.
- 9-29.2(5)A Standard Duty Boxes and Vaults, and
- 9-29.2(5)B Retrofit Security Lids for Standard Duty Concrete Junction Boxes.

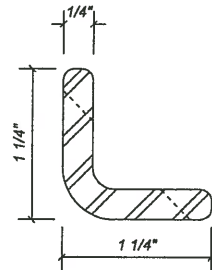
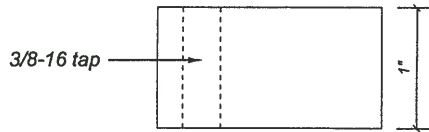
REV	DESCRIPTION	DATE	INITIALS
-	release	March 27, 2017	RV



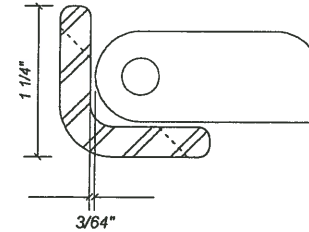
**A**  
1 BOLT GUIDE - FLAT PATTERN  
(4 REQUIRED, 1/4" MILD STEEL)



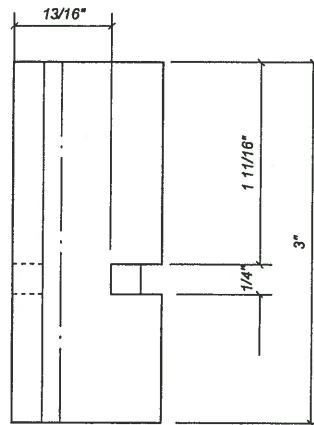
**B**  
1 STAINLESS STEEL (316) TOGGLE  
(4 REQUIRED, 316 SS)



**C**  
1 BOLSTER - PLAN  
(4 REQUIRED, 1/4" MILD STEEL PLATE)

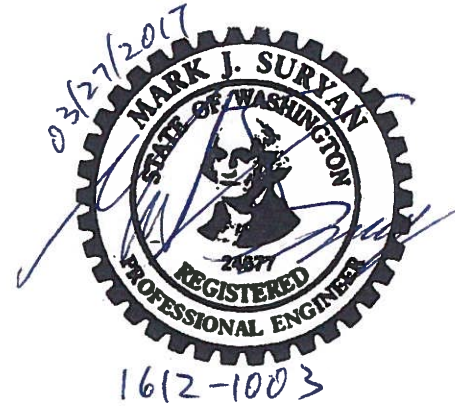


**E**  
1 TOGGLE/ANGLE PLACEMENT



**D**  
1 BOLSTER - ELEVATION  
(1/4" MILD STEEL BRAKE SHAPE)

**APPROVED**  
Washington State  
Department of Transportation  
HQ Traffic Operations Office  
BY: *[Signature]*  
DATE: 3/30/2017



NOTE: ALL MILD STEEL COMPONENTS PER ASTM A786. ALL STAINLESS STEEL HARDWARE TYPE 302.

**COBALT**  
UTILITY PRODUCTS INCORPORATED

THIS DRAWING CREATED FOR MANUFACTURING REFERENCE ONLY AND IS NOT INTENDED TO SUPERSEDE COBALT UTILITY PRODUCTS, INC. DRAWINGS OR SPECIFICATIONS OF THE REFERENCED PART(S).

SIZE 1	DRAWN BY: R. VANDEMARK	PROGRAM NUMBER: COBALT 001	REV.
	DATE CREATED: MARCH 7, 2017		
SCALE: NONE	CAD FILE #:	SHEET # 1 of 3	

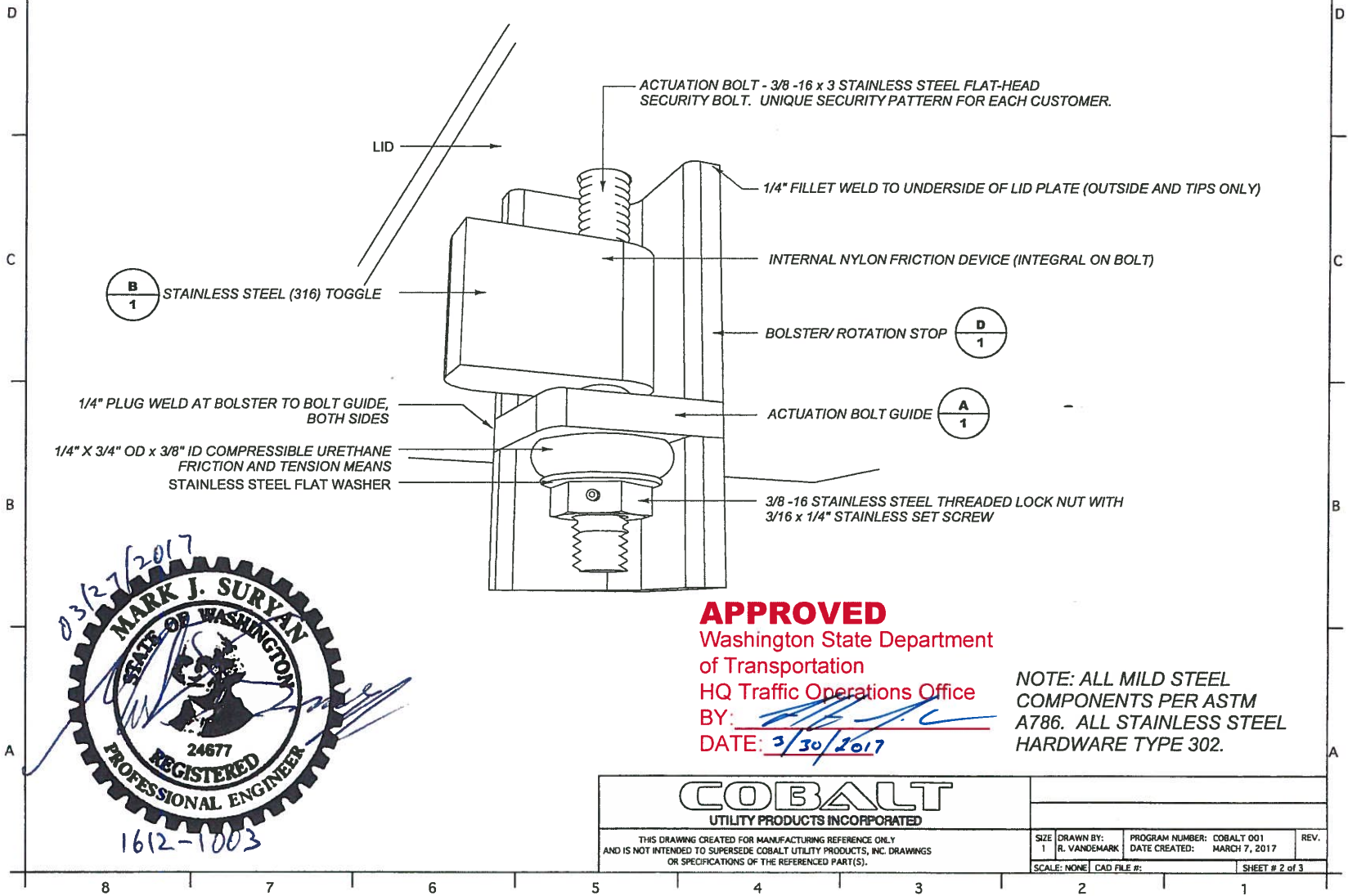
8 7 6 5 4 3 2 1

THE INFORMATION CONTAINED IN THIS DRAWING IS THE SOLE PROPERTY OF COBALT UTILITY PRODUCTS, INC. ANY REPRODUCTION IN PART OR WHOLE WITHOUT THE WRITTEN PERMISSION OF COBALT UTILITY PRODUCTS, INC. IS PROHIBITED

This assembly is constructed and tested to conform with FHWA (USDOT - Federal Highways Administration) for approval as a revision to the WSDOT Standard Specifications:

- 9-29.2(5) Testing Requirements,
- 9-29.2(5)A Standard Duty Boxes and Vaults, and
- 9-29.2(5)B Retrofit Security Lids for Standard Duty Concrete Junction Boxes.

REV	DESCRIPTION	DATE	INITIALS
-	release	March 27, 2017	RV



**APPROVED**  
 Washington State Department  
 of Transportation  
 HQ Traffic Operations Office  
 BY: [Signature]  
 DATE: 3/30/2017

NOTE: ALL MILD STEEL COMPONENTS PER ASTM A786. ALL STAINLESS STEEL HARDWARE TYPE 302.

**COBALT**  
 UTILITY PRODUCTS INCORPORATED

THIS DRAWING CREATED FOR MANUFACTURING REFERENCE ONLY AND IS NOT INTENDED TO SUPERSEDE COBALT UTILITY PRODUCTS, INC. DRAWINGS OR SPECIFICATIONS OF THE REFERENCED PART(S).

SIZE 1	DRAWN BY: R. VANDEMARK	PROGRAM NUMBER: COBALT 001 DATE CREATED: MARCH 7, 2017	REV.
SCALE: NONE		CAD FILE #:	SHEET # 2 of 3

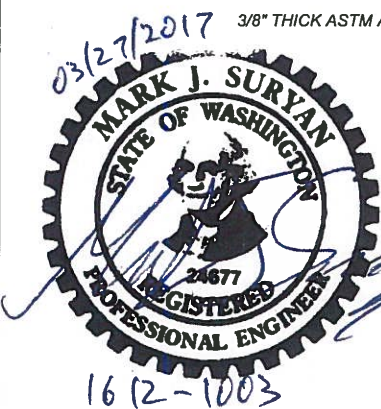
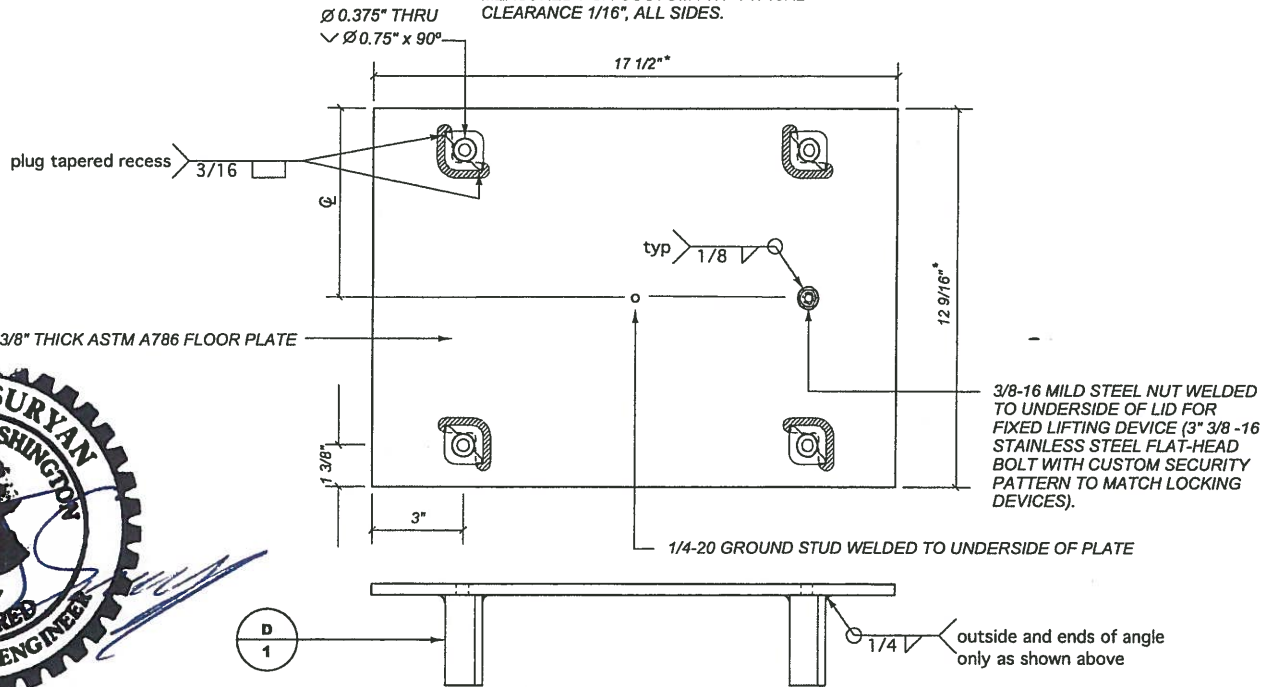
THE INFORMATION CONTAINED IN THIS DRAWING IS THE SOLE PROPERTY OF COBALT UTILITY PRODUCTS, INC. ANY REPRODUCTION IN PART OR WHOLE WITHOUT THE WRITTEN PERMISSION OF COBALT UTILITY PRODUCTS, INC. IS PROHIBITED.

This assembly is constructed and tested to conform with FHWA (USDOT - Federal Highways Administration) for approval as a revision to the WSDOT Standard Specifications:

- 9-29.2(5) Testing Requirements.
- 9-29.2(5)A Standard Duty Boxes and Vaults, and
- 9-29.2(5)B Retrofit Security Lids for Standard Duty Concrete Junction Boxes.

REV	DESCRIPTION	DATE	INITIALS
-	release	March 27, 2017	RV

\*NOTE: DIMENSIONS ARE FOR A TYPICAL PLATE. ALL PLATES ARE TO BE FIELD MEASURED FOR CUSTOM FIT. TYPICAL CLEARANCE 1/16", ALL SIDES.



**APPROVED**  
 Washington State Department  
 of Transportation  
 HQ Traffic Operations Office  
 BY: [Signature]  
 DATE: 3/30/2017

NOTE: ALL MILD STEEL COMPONENTS PER ASTM A786. ALL STAINLESS STEEL HARDWARE TYPE 302.

CHECK REQUIRED SPECIFICATION
STANDARD
WSDOT/STATE CONTRACT NUMBER
GALVANIZED SLIPNOT
GALVANIZED DIAMOND PLATE
BLACK
STAINLESS SLIPNOT

**COBALT**  
 UTILITY PRODUCTS INCORPORATED

THIS DRAWING CREATED FOR MANUFACTURING REFERENCE ONLY AND IS NOT INTENDED TO SUPERSEDE COBALT UTILITY PRODUCTS, INC. DRAWINGS OR SPECIFICATIONS OF THE REFERENCED PART(S).

SIZE	DRAWN BY:	PROGRAM NUMBER:	REV.
1	R. VANDENMARK	COBALT 001	
		DATE CREATED:	MARCH 7, 2017
	SCALE: NONE	CAD FILE #:	SHEET # 3 of 3

