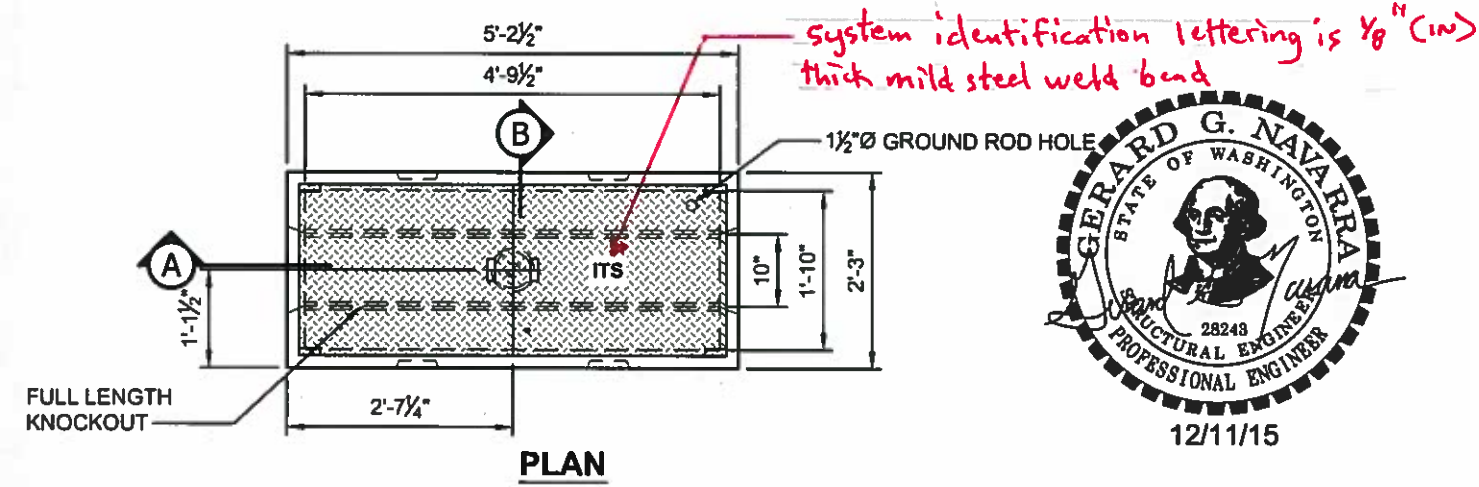
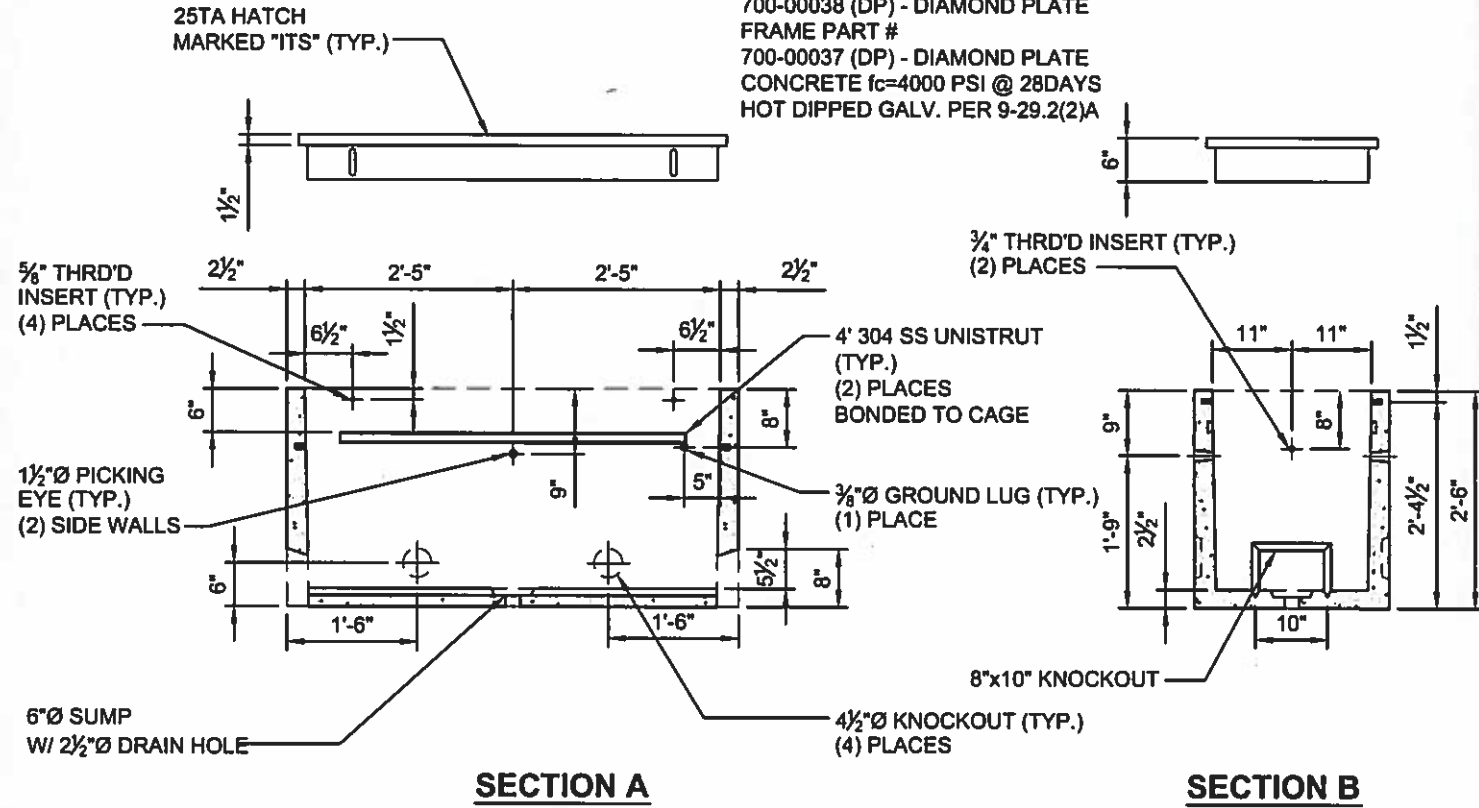


ELECTRIC

**GENERAL NOTES:**  
LID TO BE PER TRAVIS INDUSTRIES PRODUCT,  
PART NUMBERS:  
700-00038 (DP) - DIAMOND PLATE  
FRAME PART #  
700-00037 (DP) - DIAMOND PLATE  
CONCRETE  $f_c=4000$  PSI @ 28DAYS  
HOT DIPPED GALV. PER 9-29.2(2)A



**APPROVED AS NOTED**

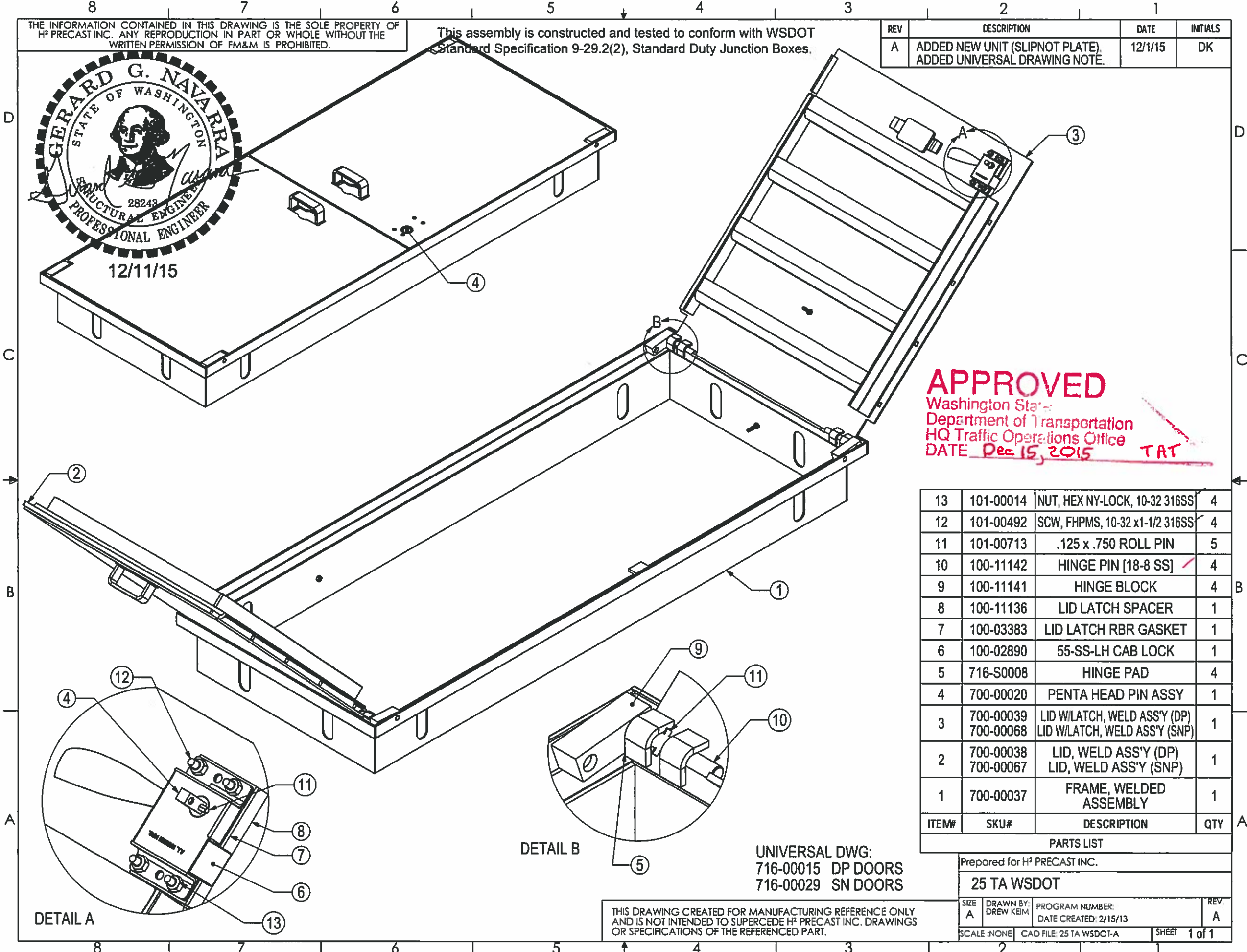
Washington State  
Department of Transportation  
HQ Traffic Operations Office  
DATE Dec 15, 2015 TPT

**GENERAL NOTES:**  
1. THE ASSEMBLY IS CONSTRUCTED AND TESTED TO CONFORM WITH WSDOT STANDARD SPECIFICATION 9-29.2(2), STANDARD DUTY CABLE VAULTS

THE INFORMATION CONTAINED IN THIS DRAWING IS THE SOLE PROPERTY OF H<sup>2</sup> PRECAST INC. ANY REPRODUCTION IN PART OR WHOLE WITHOUT THE WRITTEN PERMISSION OF FM&M IS PROHIBITED.

This assembly is constructed and tested to conform with WSDOT Standard Specification 9-29.2(2), Standard Duty Junction Boxes.

REV	DESCRIPTION	DATE	INITIALS
A	ADDED NEW UNIT (SLIPNOT PLATE). ADDED UNIVERSAL DRAWING NOTE.	12/1/15	DK



**APPROVED**  
 Washington State  
 Department of Transportation  
 HQ Traffic Operations Office  
 DATE Dec 15, 2015 TAT

ITEM#	SKU#	DESCRIPTION	QTY
13	101-00014	NUT, HEX NY-LOCK, 10-32 316SS	4
12	101-00492	SCW, FHPMS, 10-32 x1-1/2 316SS	4
11	101-00713	.125 x .750 ROLL PIN	5
10	100-11142	HINGE PIN [18-8 SS]	4
9	100-11141	HINGE BLOCK	4
8	100-11136	LID LATCH SPACER	1
7	100-03383	LID LATCH RBR GASKET	1
6	100-02890	55-SS-LH CAB LOCK	1
5	716-S0008	HINGE PAD	4
4	700-00020	PENTA HEAD PIN ASSY	1
3	700-00039	LID W/LATCH, WELD ASS'Y (DP)	1
	700-00068	LID W/LATCH, WELD ASS'Y (SNP)	1
2	700-00038	LID, WELD ASS'Y (DP)	1
	700-00067	LID, WELD ASS'Y (SNP)	1
1	700-00037	FRAME, WELDED ASSEMBLY	1

UNIVERSAL DWG:  
 716-00015 DP DOORS  
 716-00029 SN DOORS

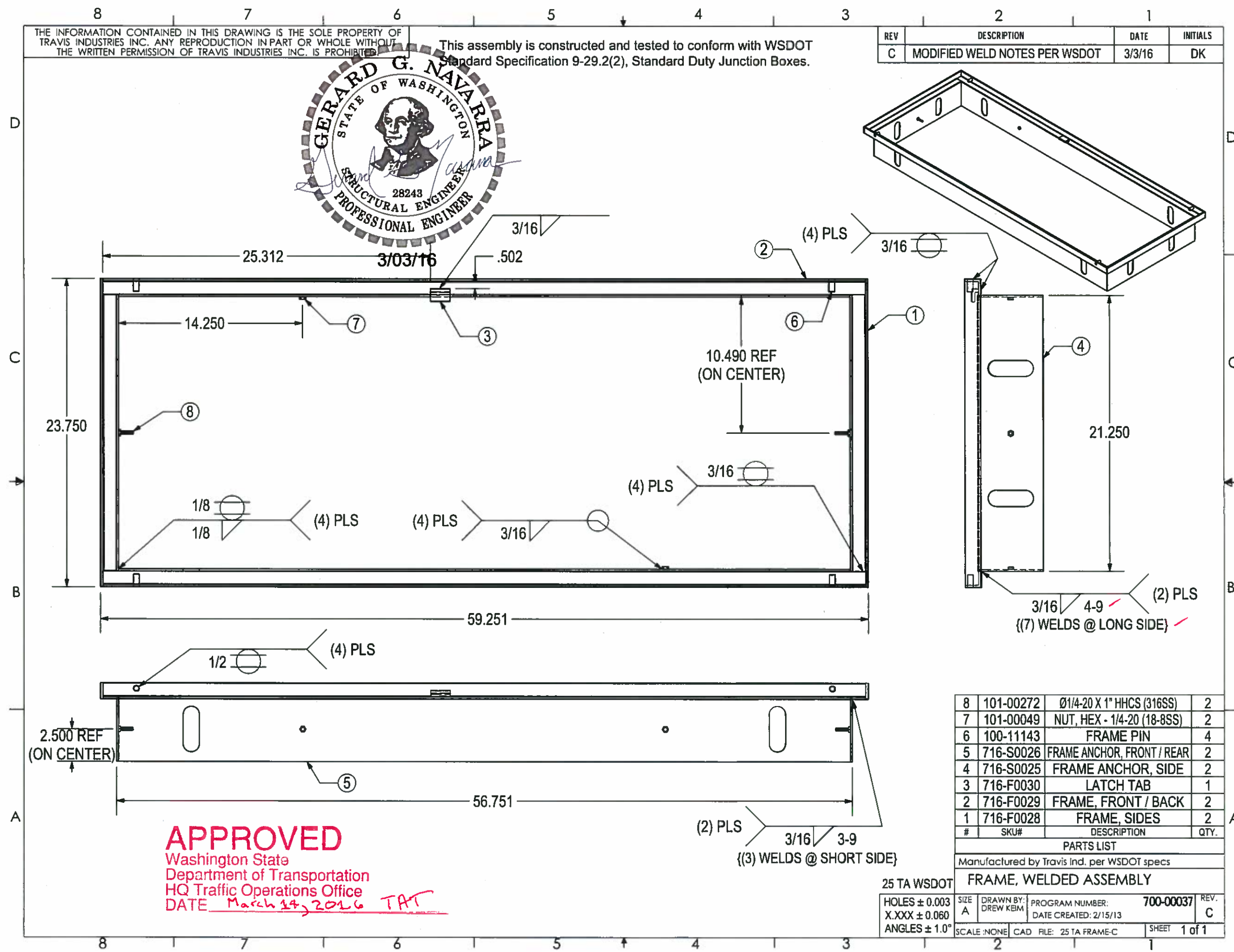
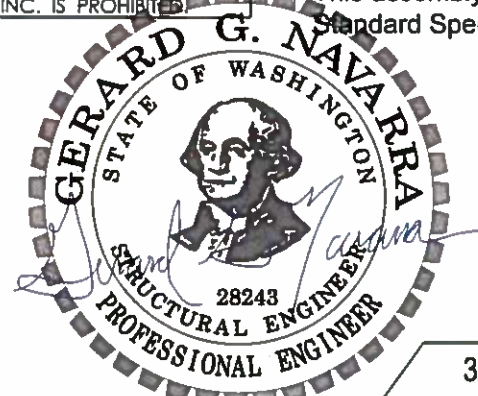
THIS DRAWING CREATED FOR MANUFACTURING REFERENCE ONLY AND IS NOT INTENDED TO SUPERCEDE H<sup>2</sup> PRECAST INC. DRAWINGS OR SPECIFICATIONS OF THE REFERENCED PART.

Prepared for H <sup>2</sup> PRECAST INC.			
25 TA WSDOT			
SIZE A	DRAWN BY: DREW KEM	PROGRAM NUMBER: DATE CREATED: 2/15/13	REV. A
SCALE: NONE	CAD FILE: 25 TA WSDOT-A	SHEET 1 of 1	

THE INFORMATION CONTAINED IN THIS DRAWING IS THE SOLE PROPERTY OF TRAVIS INDUSTRIES INC. ANY REPRODUCTION IN PART OR WHOLE WITHOUT THE WRITTEN PERMISSION OF TRAVIS INDUSTRIES INC. IS PROHIBITED.

This assembly is constructed and tested to conform with WSDOT Standard Specification 9-29.2(2), Standard Duty Junction Boxes.

REV	DESCRIPTION	DATE	INITIALS
C	MODIFIED WELD NOTES PER WSDOT	3/3/16	DK



2.500 REF (ON CENTER)

**APPROVED**  
 Washington State  
 Department of Transportation  
 HQ Traffic Operations Office  
 DATE March 14, 2016 TAT

#	SKU#	DESCRIPTION	QTY.
8	101-00272	Ø1/4-20 X 1" HHCS (316SS)	2
7	101-00049	NUT, HEX - 1/4-20 (18-8SS)	2
6	100-11143	FRAME PIN	4
5	716-S0026	FRAME ANCHOR, FRONT / REAR	2
4	716-S0025	FRAME ANCHOR, SIDE	2
3	716-F0030	LATCH TAB	1
2	716-F0029	FRAME, FRONT / BACK	2
1	716-F0028	FRAME, SIDES	2

PARTS LIST

Manufactured by Travis Ind. per WSDOT specs

FRAME, WELDED ASSEMBLY

25 TA WSDOT

HOLES ± 0.003	SIZE A	DRAWN BY: DREW KBM	PROGRAM NUMBER: 700-00037	REV. C
X.XXX ± 0.060			DATE CREATED: 2/15/13	
ANGLES ± 1.0°	SCALE: NONE	CAD FILE: 25 TA FRAME-C	SHEET 1 of 1	

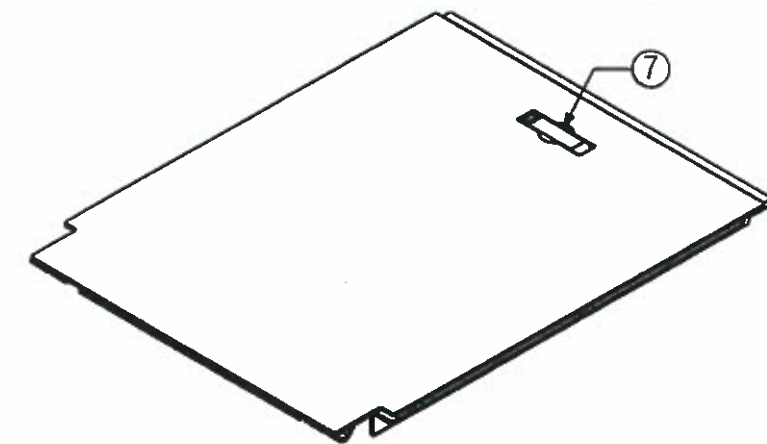
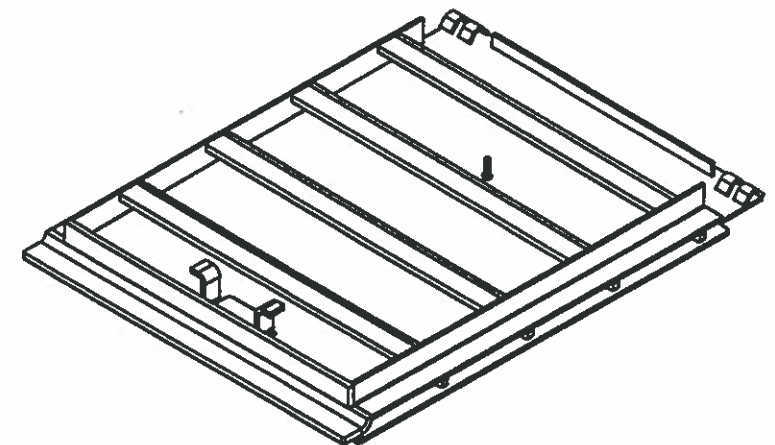
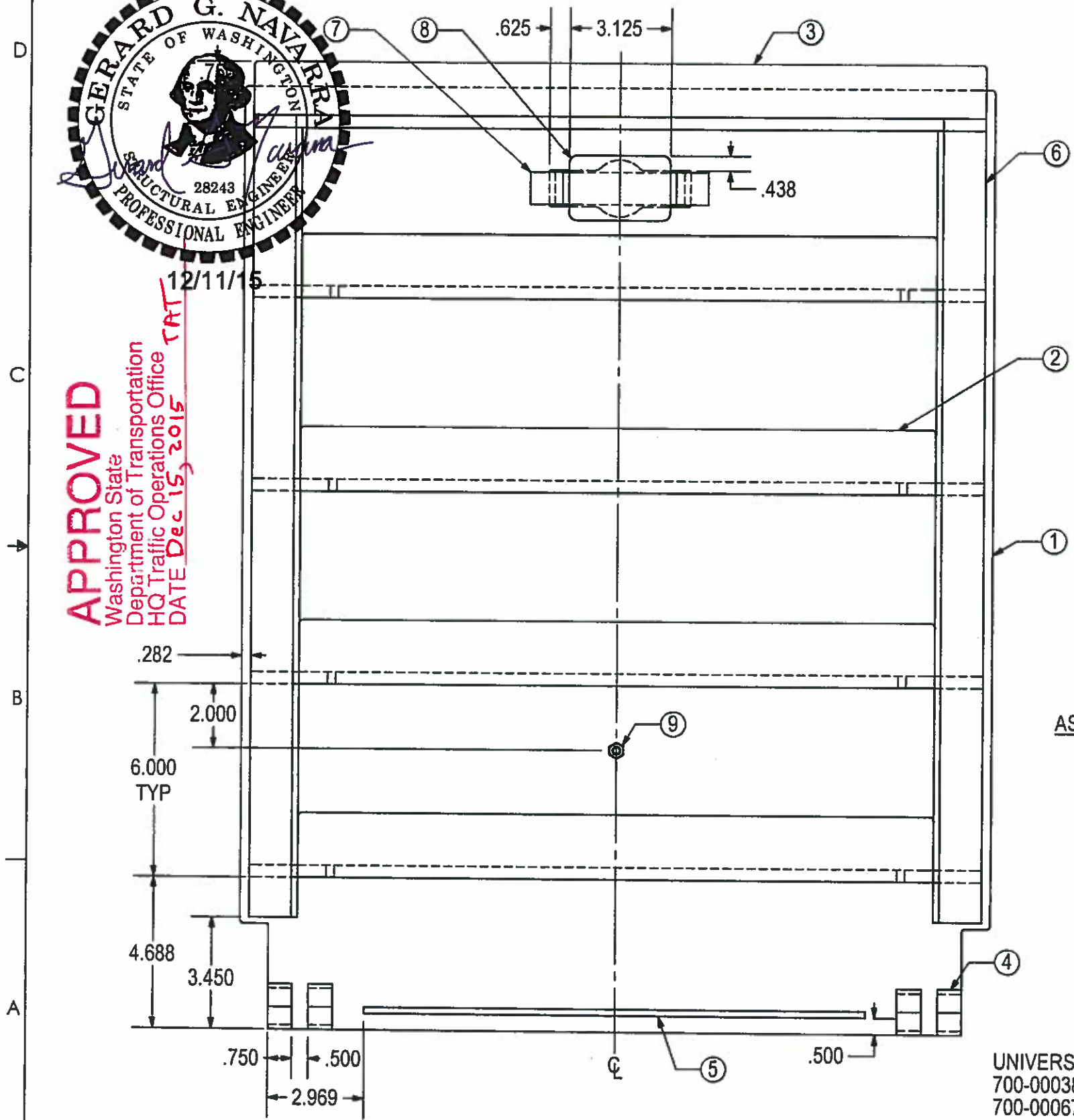
THE INFORMATION CONTAINED IN THIS DRAWING IS THE SOLE PROPERTY OF H<sup>2</sup> PRECAST INC. ANY REPRODUCTION IN PART OR WHOLE WITHOUT THE WRITTEN PERMISSION OF FM&M IS PROHIBITED.

This assembly is constructed and tested to conform with WSDOT Standard Specification 9-29.2(2), Standard Duty Junction Boxes.

REV	DESCRIPTION	DATE	INITIALS
A	ADDED HARDWARE; 101-00272 (1) PLS. ADDED UNIVERSAL DRAWING NOTE.	12/1/15	DK



**APPROVED**  
 Washington State  
 Department of Transportation  
 HQ Traffic Operations Office  
 DATE Dec 15, 2015  
 TAT  
 12/11/15



**ASSEMBLY DETAIL**

#	SKU#	DESCRIPTION	QTY
9	101-00272	Ø1/4-20 X 1" HHCS (316SS)	1
8	716-S0014	HANDLE STOP	1
7	716-F0031	HANDLE	1
6	716-F0027	LID SUPPORT, LONG	2
5	716-F0024	RIB, SIDE	1
4	716-F0004	RETAINER, HINGE PIN	4
3	716-S0024	CENTER CATCH, LID	1
2	716-S0023	LID SUPPORT, CENTER	4
1	716-S0022DP 716-S0022SN	LID (DIAMOND PLATE) LID (SLIPNOT PLATE)	1

UNIVERSAL DWG:  
 700-00038 DIAMOND PLATE LID  
 700-00067 SLIPNOT PLATE LID

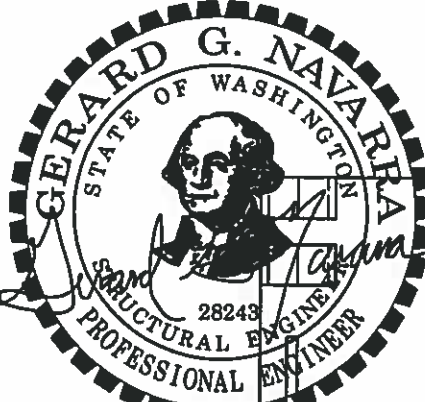
THIS DRAWING CREATED FOR MANUFACTURING REFERENCE ONLY AND IS NOT INTENDED TO SUPERCEDE H<sup>2</sup> PRECAST INC. DRAWINGS OR SPECIFICATIONS OF THE REFERENCED PART.

PARTS LIST			
Prepared for H <sup>2</sup> PRECAST INC.		25 TA WSDOT	
<b>LID, WELD SUB ASSEMBLY</b>			
SIZE A	DRAWN BY: DREW KEIM	PROGRAM NUMBER: DATE CREATED: 2/15/13	REV. A
SCALE: NONE	CAD FILE: 25 TA LID-A	SHEET 1 of 2	

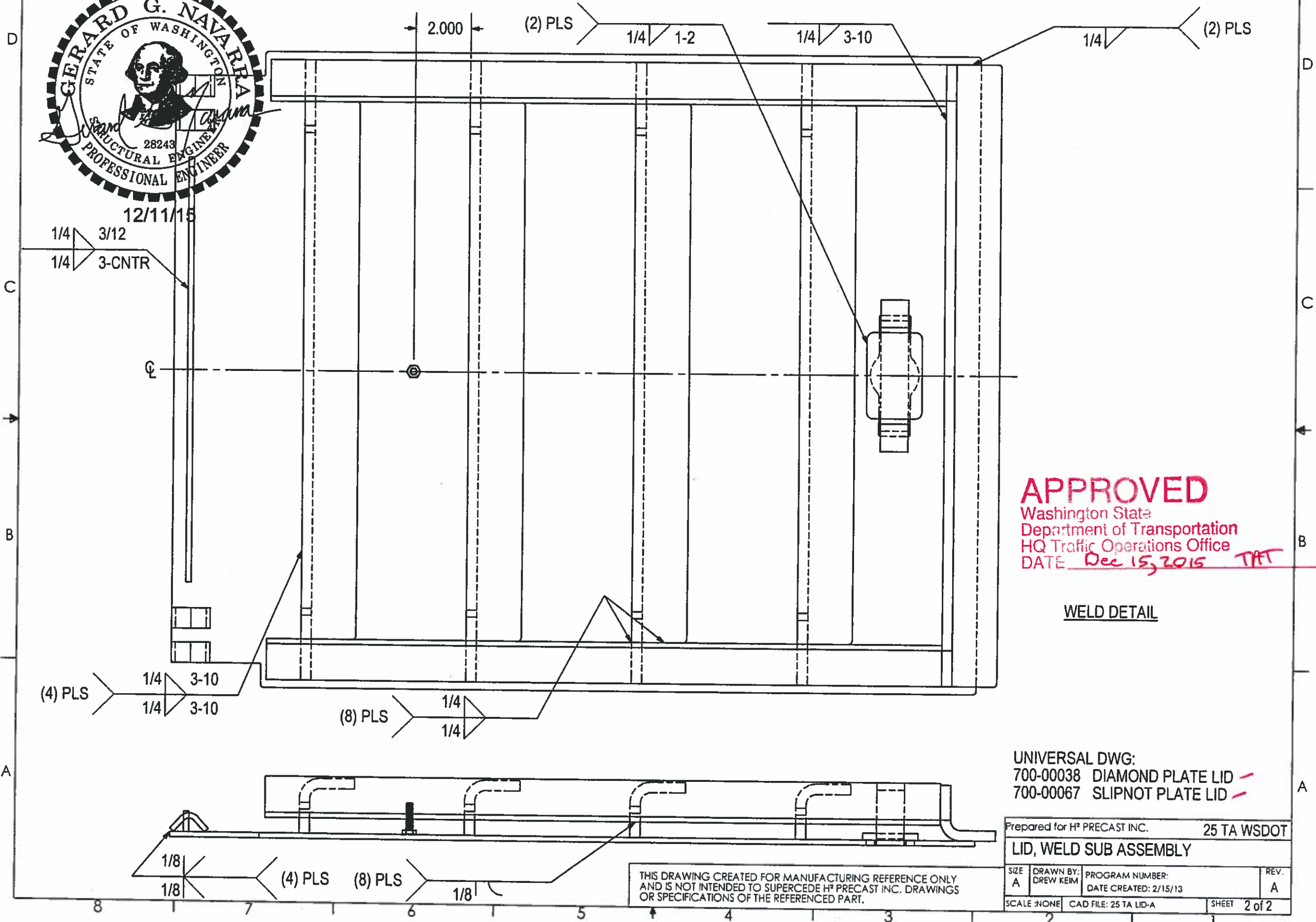
THE INFORMATION CONTAINED IN THIS DRAWING IS THE SOLE PROPERTY OF H<sup>2</sup> PRECAST INC. ANY REPRODUCTION IN PART OR WHOLE WITHOUT THE WRITTEN PERMISSION OF FM&M IS PROHIBITED.

This assembly is constructed and tested to conform with WSDOT Standard Specification 9-29.2(2), Standard Duty Junction Boxes.

REV	DESCRIPTION	DATE	INITIALS
A	ADDED HARDWARE; 101-00272 (1) PLS. ADDED UNIVERSAL DRAWING NOTE.	12/1/15	DK



12/11/15  
1/4 3/12  
1/4 3-CNTR



**APPROVED**  
Washington State  
Department of Transportation  
HQ Traffic Operations Office  
DATE Dec 15, 2015 TAT

WELD DETAIL

UNIVERSAL DWG:  
700-00038 DIAMOND PLATE LID ✓  
700-00067 SLIPNOT PLATE LID ✓

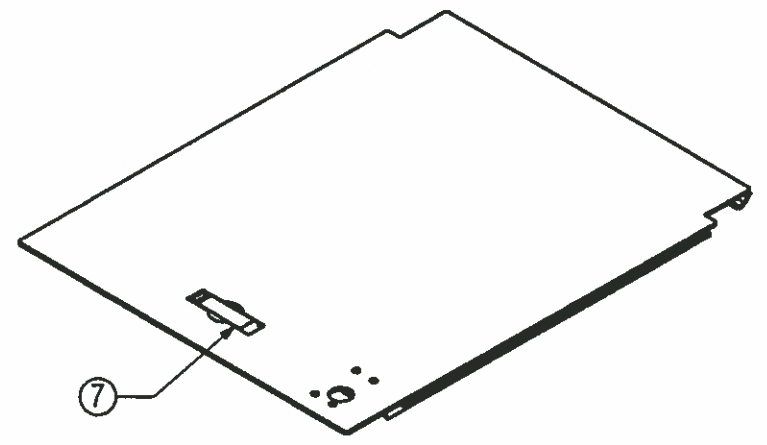
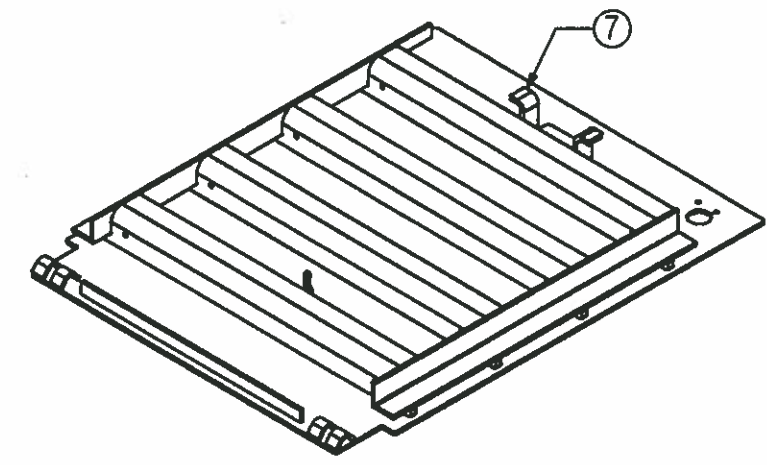
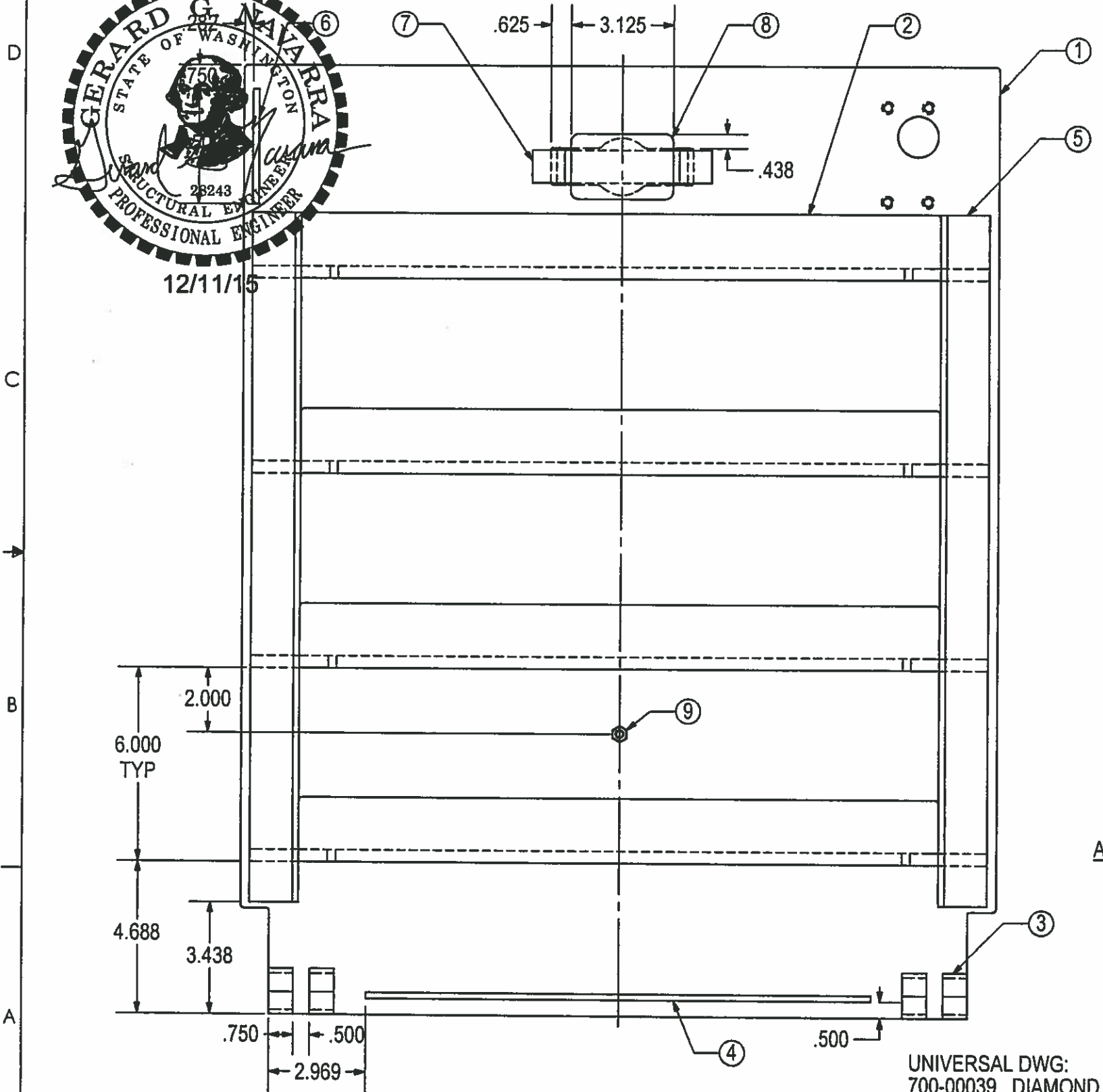
Prepared for H <sup>2</sup> PRECAST INC.		25 TA WSDOT	
<b>LID, WELD SUB ASSEMBLY</b>			
SIZE A	DRAWN BY: DREW KEIM	PROGRAM NUMBER: DATE CREATED: 2/15/13	REV. A
SCALE: NONE	CAD FILE: 25 TA LID-A	SHEET 2 of 2	

THIS DRAWING CREATED FOR MANUFACTURING REFERENCE ONLY AND IS NOT INTENDED TO SUPERCEDE H<sup>2</sup> PRECAST INC. DRAWINGS OR SPECIFICATIONS OF THE REFERENCED PART.

THE INFORMATION CONTAINED IN THIS DRAWING IS THE SOLE PROPERTY OF H<sup>2</sup> PRECAST INC. ANY REPRODUCTION IN PART OR WHOLE WITHOUT THE WRITTEN PERMISSION OF FM&M IS PROHIBITED.

This assembly is constructed and tested to conform with WSDOT Standard Specification 9-29.2(2), Standard Duty Junction Boxes.

REV	DESCRIPTION	DATE	INITIALS
A	ADDED HARDWARE; 101-00272 (1) PLS. ADDED UNIVERSAL DRAWING NOTE.	12/1/15	DK



ASSEMBLY DETAIL

#	SKU#	DESCRIPTION	QTY
9	101-00272	Ø1/4-20 X 1" HHCS (316SS)	1
8	716-S0014	HANDLE STOP	1
7	716-F0031	HANDLE	1
6	716-F0026	RIB, CENTER	1
5	716-F0025	LID SUPPORT, SHORT	2
4	716-F0024	RIB, SIDE	1
3	716-F0004	RETAINER, HINGE PIN	4
2	716-S0023	LID SUPPORT, CENTER	4
1	716-S0021DP 716-S0021SN	LID W/ LATCH (DP) LID W/ LATCH (SNP)	1

PARTS LIST

Prepared for H<sup>2</sup> PRECAST INC. 25 TA WSDOT

LID W/ LATCH, WELD SUB ASSEMBLY

SIZE A	DRAWN BY: DREW KEIM	PROGRAM NUMBER: DATE CREATED: 2/15/13	REV. A
SCALE: NONE		CAD FILE: 25 TA LID (LATCH)-A	SHEET 1 of 2

UNIVERSAL DWG:  
700-00039 DIAMOND PLATE LID W/ LATCH  
700-00068 SLIPNOT PLATE LID W/ LATCH

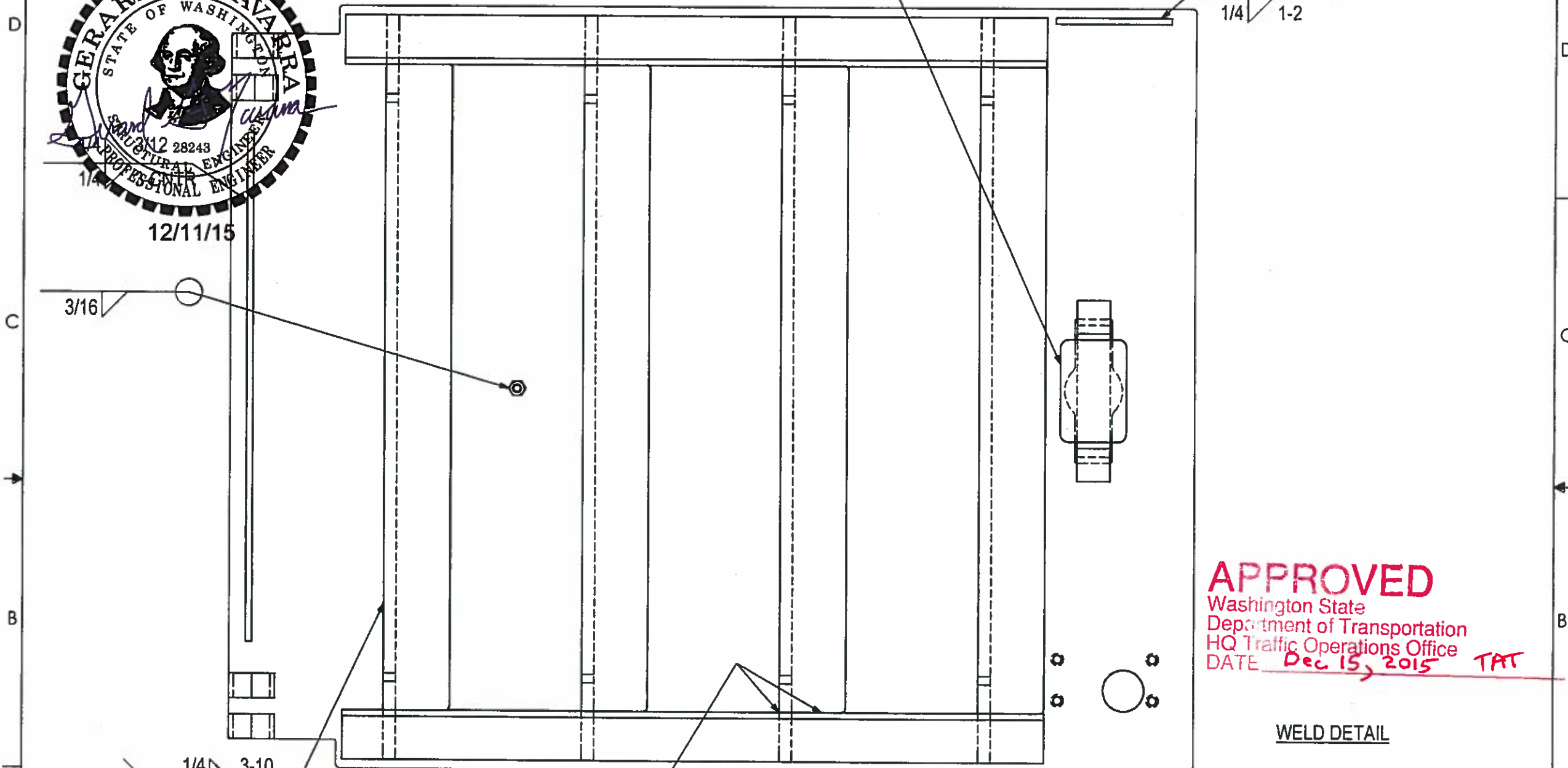
THIS DRAWING CREATED FOR MANUFACTURING REFERENCE ONLY AND IS NOT INTENDED TO SUPERCEDE H<sup>2</sup> PRECAST INC. DRAWINGS OR SPECIFICATIONS OF THE REFERENCED PART.

**APPROVED**  
 Washington State  
 Department of Transportation  
 HQ Traffic Operations Office  
 DATE Dec 15, 2015 TAT

THE INFORMATION CONTAINED IN THIS DRAWING IS THE SOLE PROPERTY OF H<sup>2</sup> PRECAST INC. ANY REPRODUCTION IN PART OR WHOLE WITHOUT THE WRITTEN PERMISSION OF FM&M IS PROHIBITED.

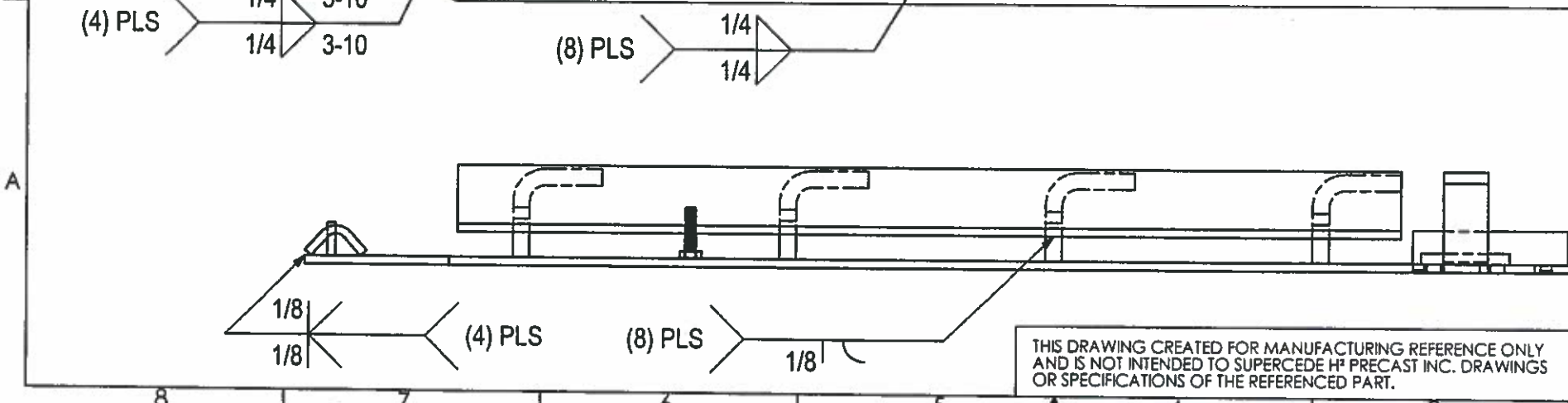
This assembly is constructed and tested to conform with WSDOT Standard Specification 9-29.2(2), Standard Duty Junction Boxes.

REV	DESCRIPTION	DATE	INITIALS
A	ADDED HARDWARE; 101-00272 (1) PLS. ADDED UNIVERSAL DRAWING NOTE.	12/1/15	DK



**APPROVED**  
 Washington State  
 Department of Transportation  
 HQ Traffic Operations Office  
 DATE: Dec 15, 2015 TAT

WELD DETAIL



UNIVERSAL DWG:  
 700-00039 DIAMOND PLATE LID W/ LATCH  
 700-00068 SLIPNOT PLATE LID W/ LATCH

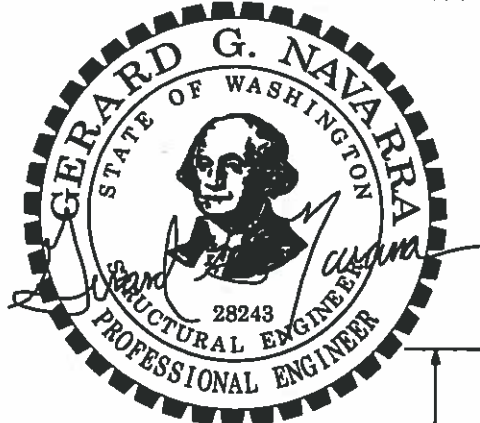
THIS DRAWING CREATED FOR MANUFACTURING REFERENCE ONLY AND IS NOT INTENDED TO SUPERCEDE H<sup>2</sup> PRECAST INC. DRAWINGS OR SPECIFICATIONS OF THE REFERENCED PART.

Prepared for H <sup>2</sup> PRECAST INC.		25 TA WSDOT	
LID W/ LATCH, WELD SUB ASSEMBLY			
SIZE A	DRAWN BY: DREW KEIM	PROGRAM NUMBER: DATE CREATED: 2/15/13	REV. A
SCALE: NONE	CAD FILE: 25 TA LID (LATCH)-A	SHEET 2 of 2	

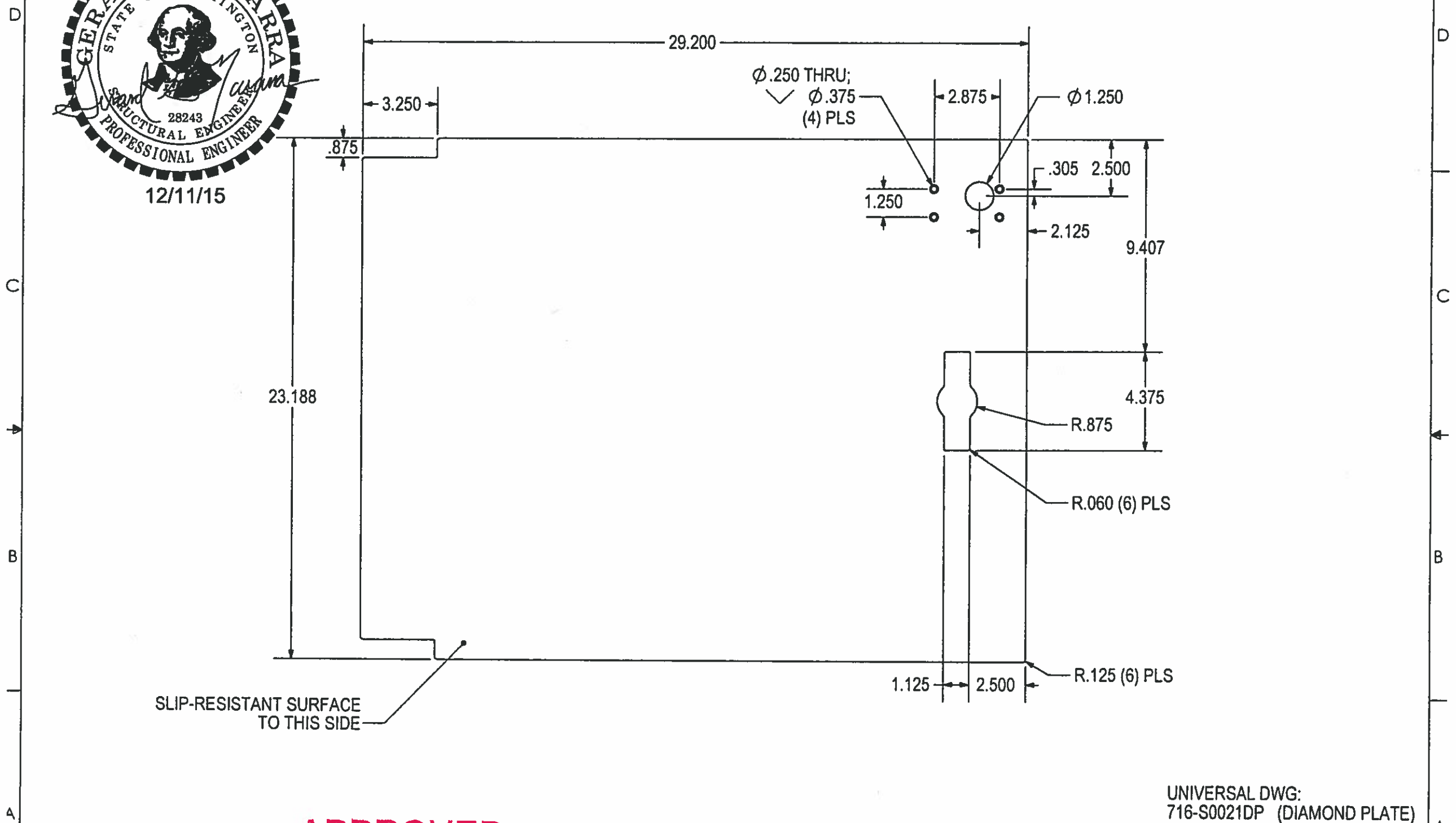
THE INFORMATION CONTAINED IN THIS DRAWING IS THE SOLE PROPERTY OF H<sup>2</sup> PRECAST INC. ANY REPRODUCTION IN PART OR WHOLE WITHOUT THE WRITTEN PERMISSION OF FM&M IS PROHIBITED.

This assembly is constructed and tested to conform with WSDOT Standard Specification 9-29.2(2), Standard Duty Junction Boxes.

REV	DESCRIPTION	DATE	INITIALS
B	NOW UNIVERSAL PART / DRAWING; DIAMOND PLATE & SLIPNOT PLATE. 716-S0021XX WAS 716-S0021.	12/1/15	DK



12/11/15



SLIP-RESISTANT SURFACE TO THIS SIDE

**APPROVED**  
 Washington State  
 Department of Transportation  
 HQ Traffic Operations Office  
 DATE Dec 15, 2015 TAT

3/16 DIAMOND -OR- 3/16 SLIPNOT PLATE  
 29.200 x 23.188  
 (1) REQ'D

UNIVERSAL DWG:  
 716-S0021DP (DIAMOND PLATE)  
 716-S0021SN (SLIPNOT PLATE)

THIS DRAWING CREATED FOR MANUFACTURING REFERENCE ONLY AND IS NOT INTENDED TO SUPERCEDE H <sup>2</sup> PRECAST INC. DRAWINGS OR SPECIFICATIONS OF THE REFERENCED PART.		HOLES ± 0.003 X.XXX ± 0.015 ANGLES ± 1.0°	SIZE A	DRAWN BY: DREW KEIM	PROGRAM NUMBER: DATE CREATED: 2/8/13	REV. B
Prepared for H <sup>2</sup> PRECAST INC.		25 TA WSDOT		LID, WITH LATCH		
SCALE: NONE	CAD FILE: 716-S0021B	SHEET	1 of 1			



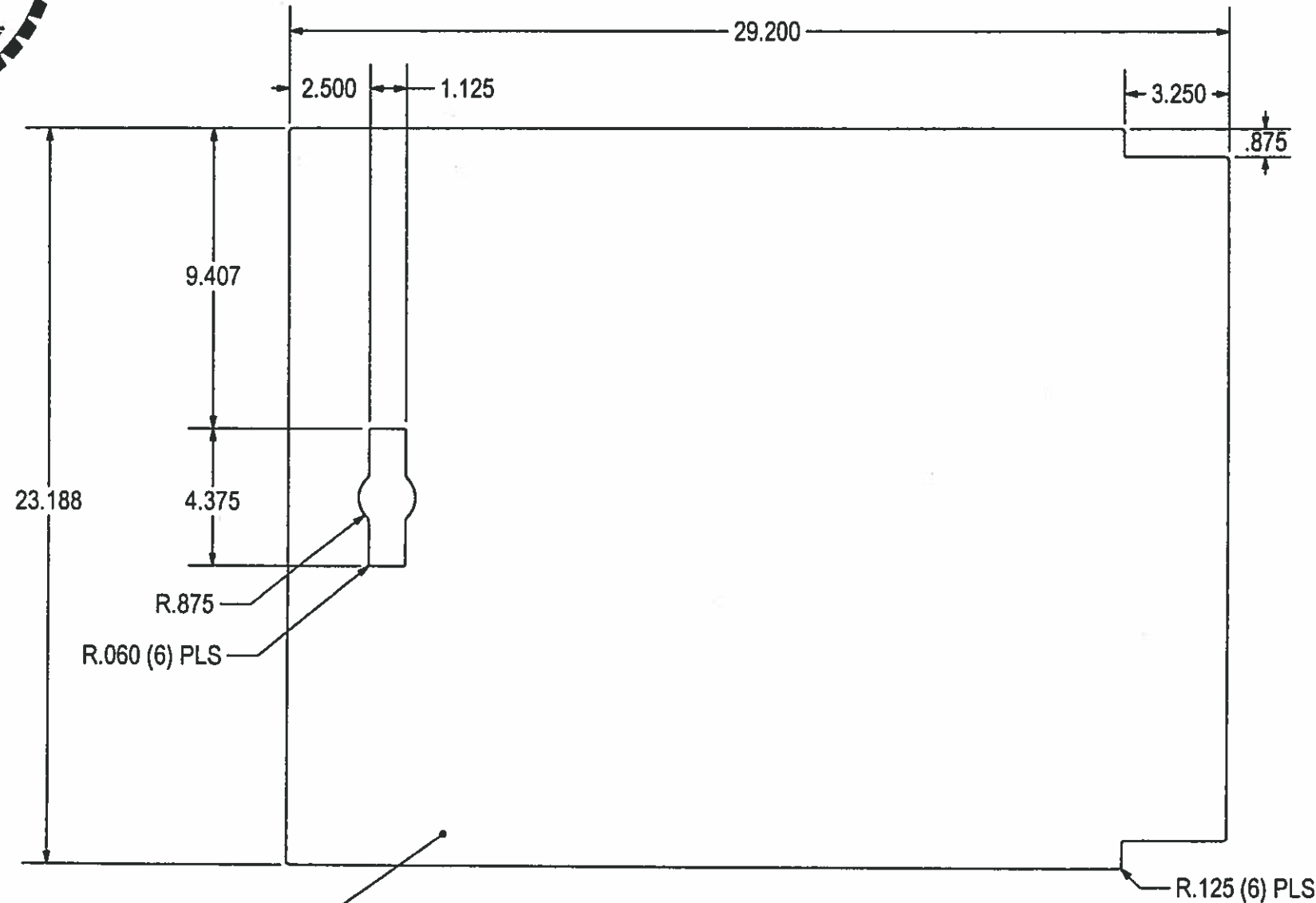
THE INFORMATION CONTAINED IN THIS DRAWING IS THE SOLE PROPERTY OF H<sup>2</sup> PRECAST INC. ANY REPRODUCTION IN PART OR WHOLE WITHOUT THE WRITTEN PERMISSION OF FM&M IS PROHIBITED.

This assembly is constructed and tested to conform with WSDOT Standard Specification 9-29.2(2), Standard Duty Junction Boxes.

REV	DESCRIPTION	DATE	INITIALS
A	NOW UNIVERSAL PART / DRAWING; DIAMOND PLATE & SLIPNOT PLATE. 716-S0022XX WAS 716-S0022.	12/1/15	DK



12/11/15



SLIP-RESISTANT SURFACE TO THIS SIDE

**APPROVED**

Washington State  
 Department of Transportation  
 HQ Traffic Operations Office  
 DATE Dec 15, 2015 TAT

3/16 DIAMOND -OR- 3/16 SLIPNOT PLATE  
 29.200 x 23.188  
 (1) REQ'D

UNIVERSAL DWG:  
 716-S0022DP (DIAMOND PLATE)  
 716-S0022SN (SLIPNOT PLATE)

Prepared for H<sup>2</sup> PRECAST INC. 25 TA WSDOT

LID

HOLES ± 0.003 X.XXX ± 0.015 ANGLES ± 1.0°	SIZE A	DRAWN BY: DREW KEIM	PROGRAM NUMBER: DATE CREATED: 2/8/13	REV. A
SCALE: NONE		CAD FILE: 716-S0022A		SHEET 1 of 1

THIS DRAWING CREATED FOR MANUFACTURING REFERENCE ONLY AND IS NOT INTENDED TO SUPERCEDE H<sup>2</sup> PRECAST INC. DRAWINGS OR SPECIFICATIONS OF THE REFERENCED PART.

THE INFORMATION CONTAINED IN THIS DRAWING IS THE SOLE PROPERTY OF H<sup>2</sup> PRECAST INC. ANY REPRODUCTION IN PART OR WHOLE WITHOUT THE WRITTEN PERMISSION OF FM&M IS PROHIBITED.

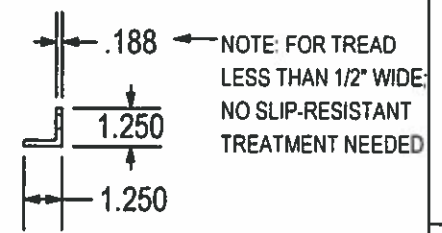
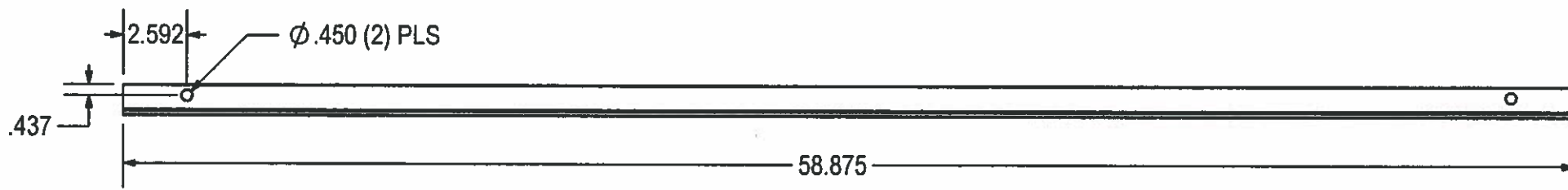
This assembly is constructed and tested to conform with WSDOT Standard Specification 9-29.2(2), Standard Duty Junction Boxes.

REV	DESCRIPTION	DATE	INITIALS
A	ADDED "TREAD" NOTE PER STATE REQUIREMENT	12/1/15	DK



12/11/15

716-F0005  
7/16 X 1.000" PIN  
(2) PLS



**APPROVED**  
Washington State  
Department of Transportation  
HQ Traffic Operations Office  
DATE Dec 15, 2015 TAT

1-1/4 X 1-1/4 X 3/16 ANGLE - 58.875 LONG  
(2) PLS

THIS DRAWING CREATED FOR MANUFACTURING REFERENCE ONLY AND IS NOT INTENDED TO SUPERCEDE H<sup>2</sup> PRECAST INC. DRAWINGS OR SPECIFICATIONS OF THE REFERENCED PART.

Prepared for H <sup>2</sup> PRECAST INC.			
FRAME, FRONT / REAR			
SIZE A	DRAWN BY: DREW KEIM	PROGRAM NUMBER: 716-F0029	REV. A
DATE CREATED: 2/8/13		SHEET 1 of 1	
SCALE: NONE	CAD FILE: 716-F0029A		

25 TA WSDOT

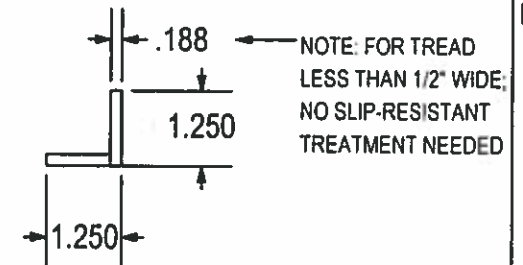
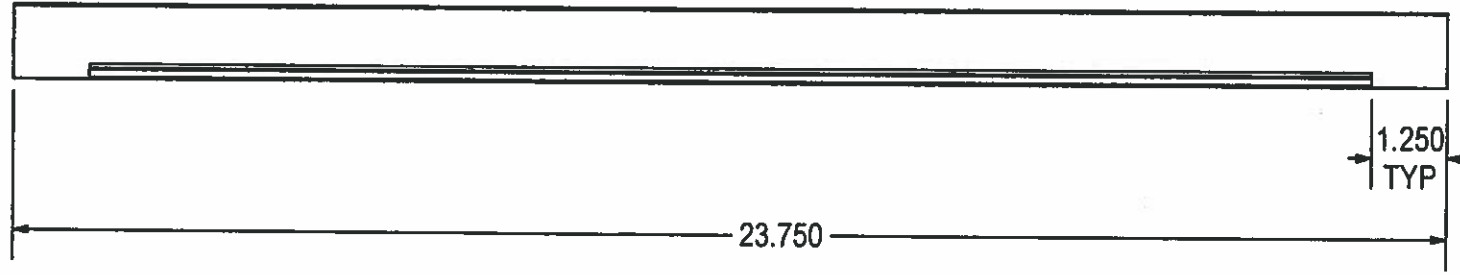
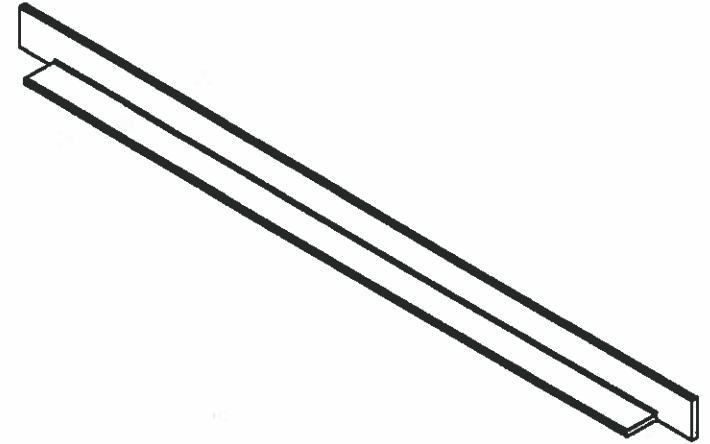
THE INFORMATION CONTAINED IN THIS DRAWING IS THE SOLE PROPERTY OF HP PRECAST INC. ANY REPRODUCTION IN PART OR WHOLE WITHOUT THE WRITTEN PERMISSION OF FM&M IS PROHIBITED.

This assembly is constructed and tested to conform with WSDOT Standard Specification 9-29.2(2), Standard Duty Junction Boxes.

REV	DESCRIPTION	DATE	INITIALS
A	ADDED "TREAD" NOTE PER STATE REQUIREMENT	12/1/15	DK



12/11/15



**APPROVED**  
 Washington State  
 Department of Transportation  
 HQ Traffic Operations Office  
 DATE Dec 15, 2015 TAT

1-1/4 X 1-1/4 X 3/16 ANGLE - 23.750 LONG  
 (2) PLS

THIS DRAWING CREATED FOR MANUFACTURING REFERENCE ONLY AND IS NOT INTENDED TO SUPERCEDE HP PRECAST INC. DRAWINGS OR SPECIFICATIONS OF THE REFERENCED PART.

Prepared for HP PRECAST INC.			
FRAME, SIDES			
SIZE A	DRAWN BY: DREW KEIM	PROGRAM NUMBER: 716-F0028	REV. A
SCALE: NONE	CAD FILE: 716-F0028A	DATE CREATED: 2/8/13	SHEET 1 of 1

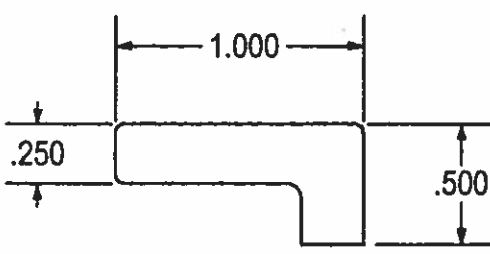
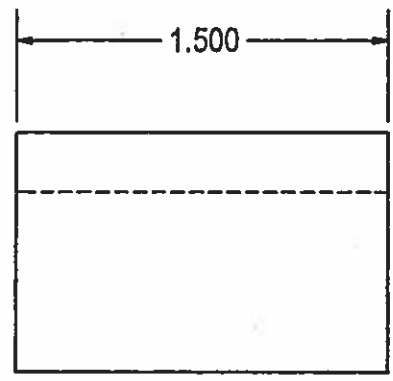
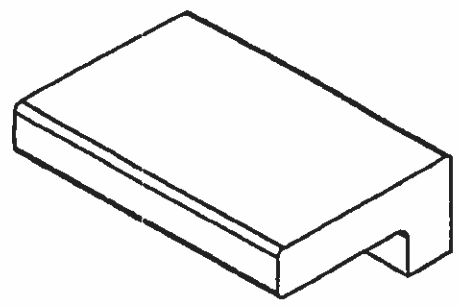
25 TA WSDOT

THE INFORMATION CONTAINED IN THIS DRAWING IS THE SOLE PROPERTY OF H<sup>2</sup> PRECAST INC. ANY REPRODUCTION IN PART OR WHOLE WITHOUT THE WRITTEN PERMISSION OF FM&M IS PROHIBITED.

This assembly is constructed and tested to conform with WSDOT Standard Specification 9-29.2(2), Standard Duty Junction Boxes.



12/11/15



**APPROVED**  
 Washington State  
 Department of Transportation  
 HQ Traffic Operations Office  
 DATE Dec 15, 2015 TAT

1 X 1 X 1/4 ANGLE X 1.500 LONG

25 TA WSDOT

Prepared for H<sup>2</sup> PRECAST INC.

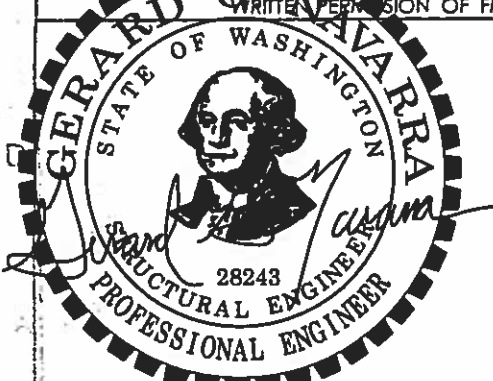
LATCH TAB

THIS DRAWING CREATED FOR MANUFACTURING REFERENCE ONLY AND IS NOT INTENDED TO SUPERCEDE H<sup>2</sup> PRECAST INC. DRAWINGS OR SPECIFICATIONS OF THE REFERENCED PART.

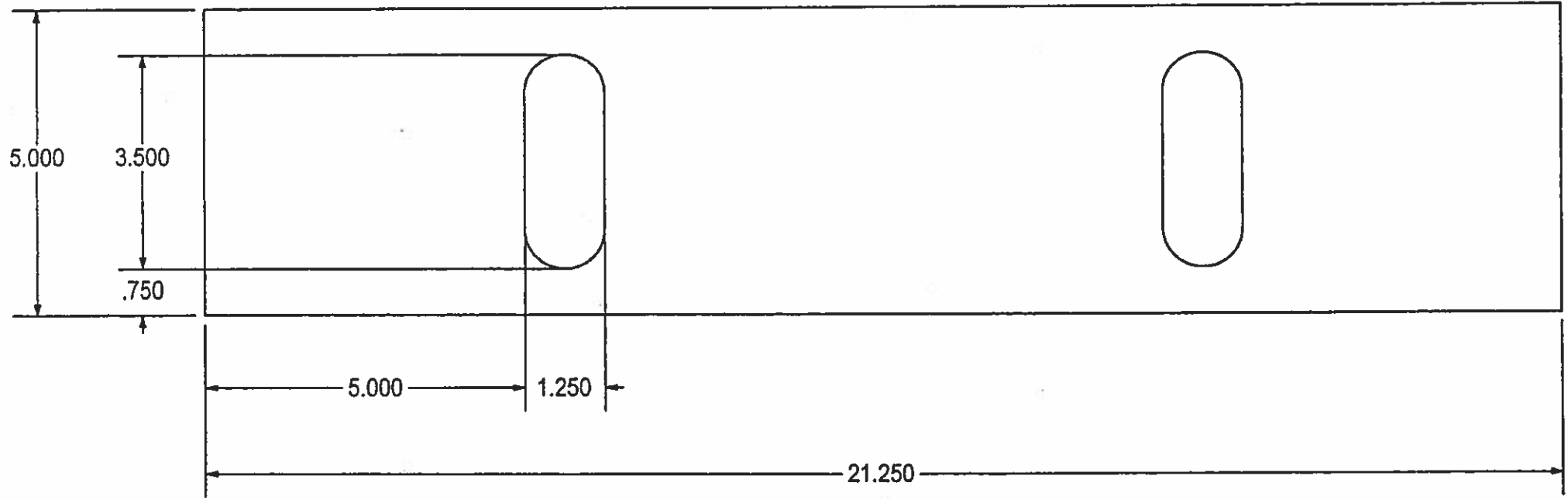
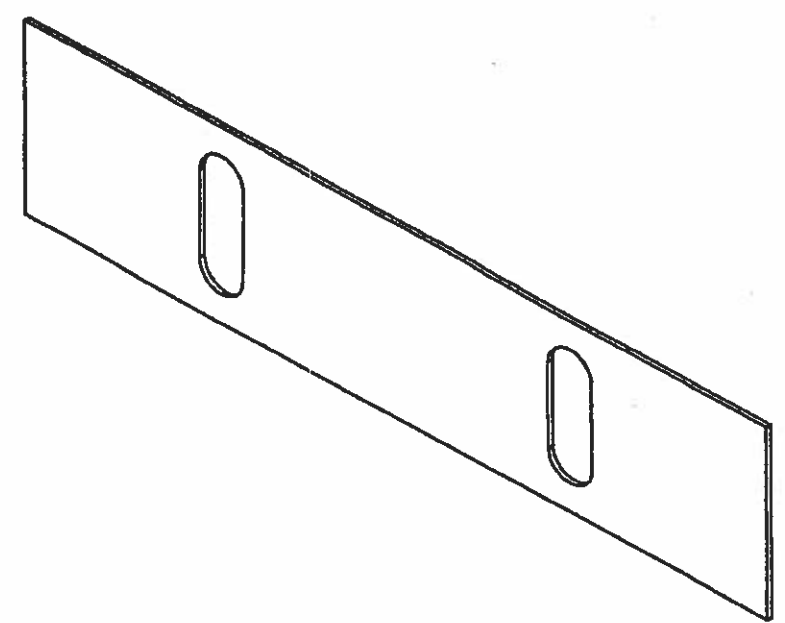
HOLES ± 0.003 X.XXX ± 0.060 ANGLES ± 1.0°	SIZE A	DRAWN BY: DREW KEIM	PROGRAM NUMBER: 716-F0030	REV.
SCALE: NONE	CAD FILE: 716-F0030	DATE CREATED: 2/8/13	SHEET	1 of 1

THE INFORMATION CONTAINED IN THIS DRAWING IS THE SOLE PROPERTY OF H<sup>2</sup> PRECAST INC. ANY REPRODUCTION IN PART OR WHOLE WITHOUT THE WRITTEN PERMISSION OF FM&M IS PROHIBITED.

This assembly is constructed and tested to conform with WSDOT Standard Specification 9-29.2(2), Standard Duty Junction Boxes.



12/11/15



**APPROVED**  
Washington State  
Department of Transportation  
HQ Traffic Operations Office  
DATE Dec 15, 2015 TAT

10 GA HR - 21.250 X 5.000  
(2) REQ'D

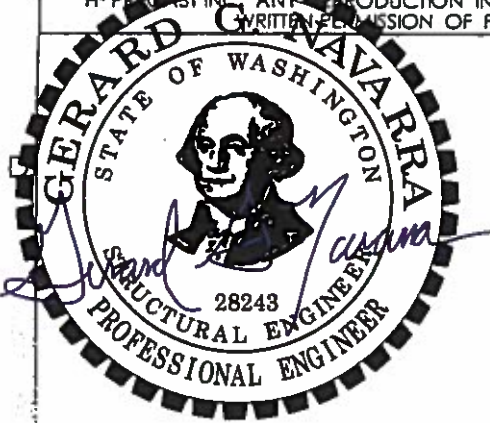
THIS DRAWING CREATED FOR MANUFACTURING REFERENCE ONLY AND IS NOT INTENDED TO SUPERCEDE H<sup>2</sup> PRECAST INC. DRAWINGS OR SPECIFICATIONS OF THE REFERENCED PART.

HOLES ± 0.003  
X.XXX ± 0.015  
ANGLES ± 1.0°

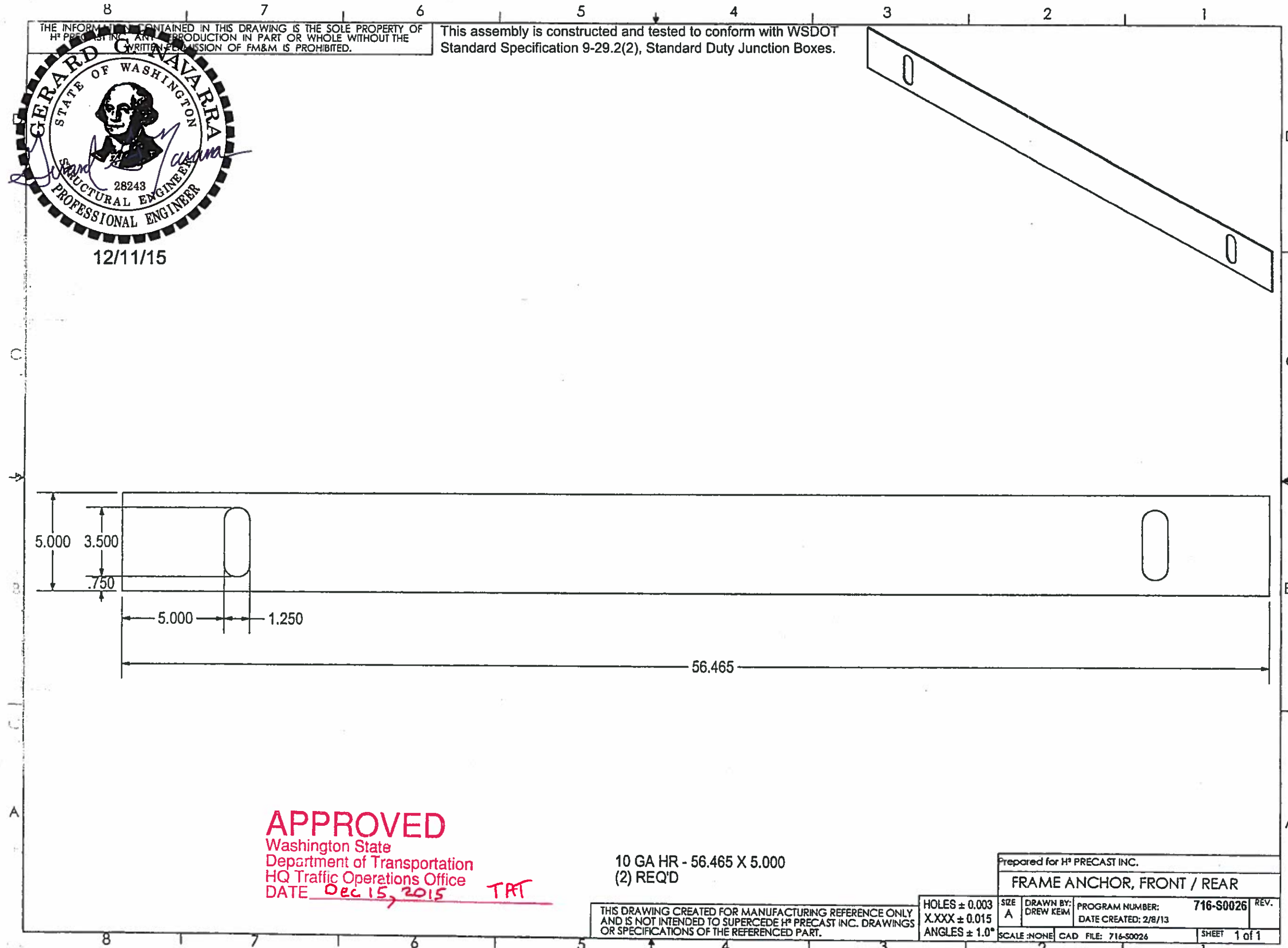
Prepared for H <sup>2</sup> PRECAST INC.			
FRAME ANCHOR, SIDE			
SIZE A	DRAWN BY: DREW KEM	PROGRAM NUMBER: 716-S0025	REV.
SCALE: NONE		DATE CREATED: 2/8/13	SHEET 1 of 1
CAD FILE: 716-S0025			

THE INFORMATION CONTAINED IN THIS DRAWING IS THE SOLE PROPERTY OF H<sup>3</sup> PRECAST INC. ANY REPRODUCTION IN PART OR WHOLE WITHOUT THE WRITTEN PERMISSION OF FM&M IS PROHIBITED.

This assembly is constructed and tested to conform with WSDOT Standard Specification 9-29.2(2), Standard Duty Junction Boxes.



12/11/15



**APPROVED**  
 Washington State  
 Department of Transportation  
 HQ Traffic Operations Office  
 DATE Dec 15, 2015 TAT

10 GA HR - 56.465 X 5.000  
 (2) REQ'D

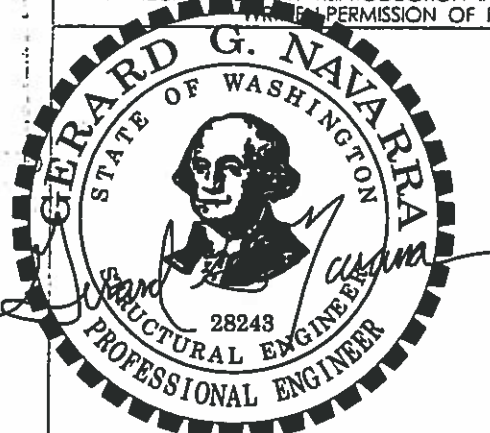
THIS DRAWING CREATED FOR MANUFACTURING REFERENCE ONLY AND IS NOT INTENDED TO SUPERCEDE H<sup>3</sup> PRECAST INC. DRAWINGS OR SPECIFICATIONS OF THE REFERENCED PART.

HOLES ± 0.003  
 X.XXX ± 0.015  
 ANGLES ± 1.0°

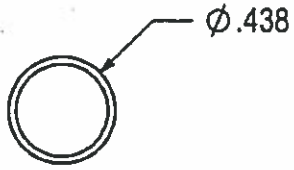
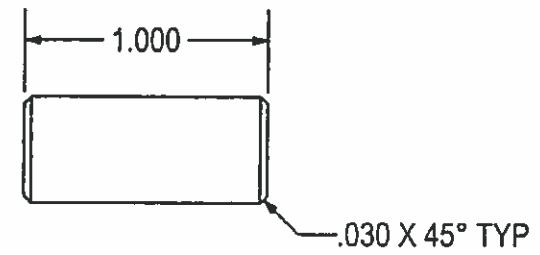
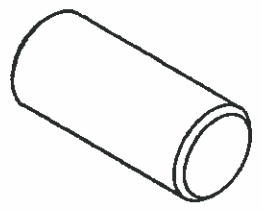
Prepared for H <sup>3</sup> PRECAST INC.			
FRAME ANCHOR, FRONT / REAR			
SIZE A	DRAWN BY: DREW KEIM	PROGRAM NUMBER: 716-S0026	REV.
SCALE: NONE		DATE CREATED: 2/8/13	SHEET 1 of 1
CAD FILE: 716-S0026			

THE INFORMATION CONTAINED IN THIS DRAWING IS THE SOLE PROPERTY OF H<sup>2</sup> PRECAST INC. ANY REPRODUCTION IN PART OR WHOLE WITHOUT THE WRITTEN PERMISSION OF FM&M IS PROHIBITED.

This assembly is constructed and tested to conform with WSDOT Standard Specification 9-29.2(2), Standard Duty Junction Boxes.



12/11/15



UNIVERSAL PART,  
USED ON:  
2436 GPUD (2) PLS  
2436 SDOT (SLIP) (2) PLS  
2436 WSDOT (STL) (2) PLS  
25TA WSDOT (4) PLS  
3030 STD STL (2) PLS

**APPROVED**  
Washington State  
Department of Transportation  
HQ Traffic Operations Office  
DATE Dec 15, 2015 **TAT**

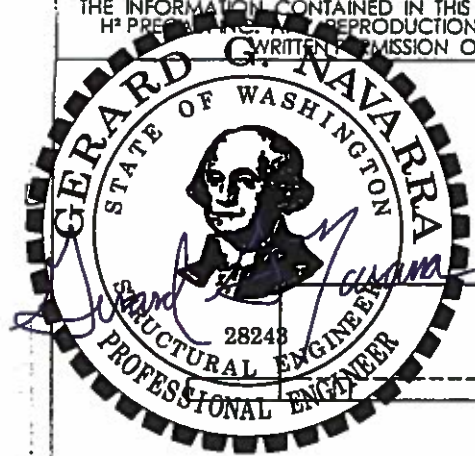
7/16" CFRB - 1.000" LONG

THIS DRAWING CREATED FOR MANUFACTURING REFERENCE ONLY AND IS NOT INTENDED TO SUPERCEDE H<sup>2</sup> PRECAST INC. DRAWINGS OR SPECIFICATIONS OF THE REFERENCED PART.

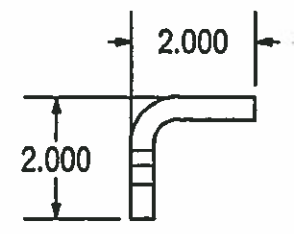
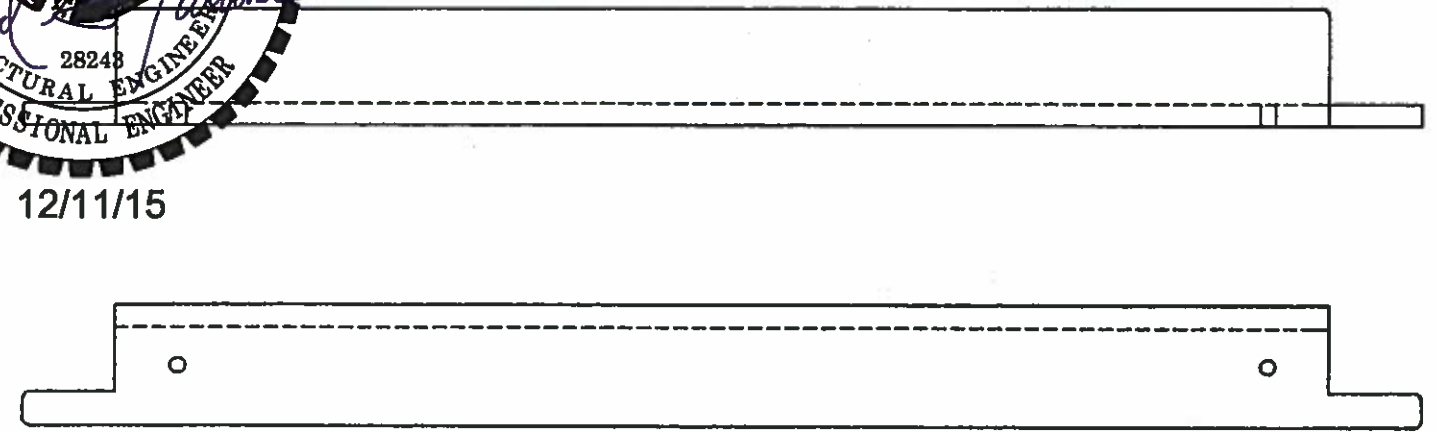
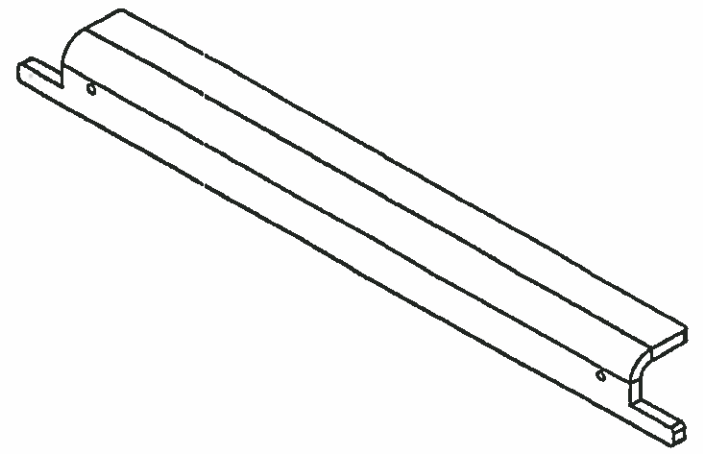
Prepared for H <sup>2</sup> PRECAST INC.			
FRAME PIN			
SIZE A	DRAWN BY: DREW KEIM	PROGRAM NUMBER: 100-11143	REV.
SCALE :NONE		CAD FILE: 100-11143	SHEET 1 of 1

THE INFORMATION CONTAINED IN THIS DRAWING IS THE SOLE PROPERTY OF H<sup>3</sup> PRECAST INC. REPRODUCTION IN PART OR WHOLE WITHOUT THE WRITTEN PERMISSION OF FM&M IS PROHIBITED.

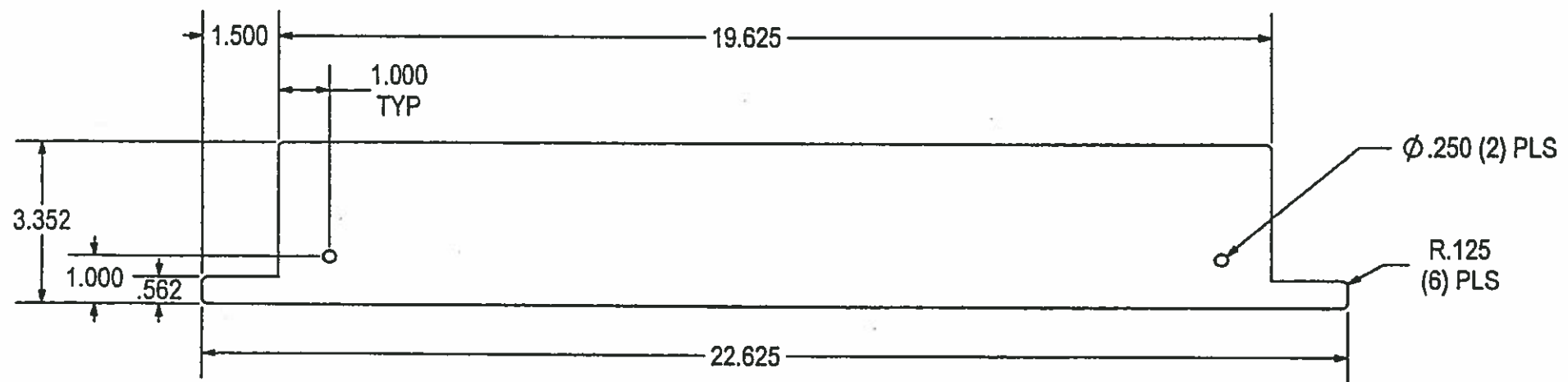
This assembly is constructed and tested to conform with WSDOT Standard Specification 9-29.2(2), Standard Duty Junction Boxes.



12/11/15



FORMED DETAILS



FLAT PATTERN

**APPROVED**  
 Washington State  
 Department of Transportation  
 HQ Traffic Operations Office  
 DATE Dec 15, 2015 TAT

3/8 HR - 22.625 X 3.352  
 X = .648 @ 90° .375 R  
 (8) PLS

25 TA WSDOT

THIS DRAWING CREATED FOR MANUFACTURING REFERENCE ONLY AND IS NOT INTENDED TO SUPERCEDE H<sup>3</sup> PRECAST INC. DRAWINGS OR SPECIFICATIONS OF THE REFERENCED PART.

HOLES ± 0.003  
 X.XXX ± 0.015  
 ANGLES ± 1.0°

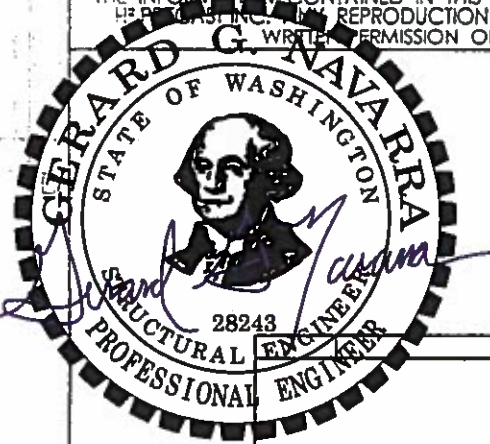
Prepared for H <sup>3</sup> PRECAST INC.			
LID SUPPORT, CENTER			
SIZE A	DRAWN BY: DREW KEIM	PROGRAM NUMBER: 716-50023	REV.
SCALE: NONE	CAD FILE: 716-50023	DATE CREATED: 2/8/13	SHEET 1 of 1



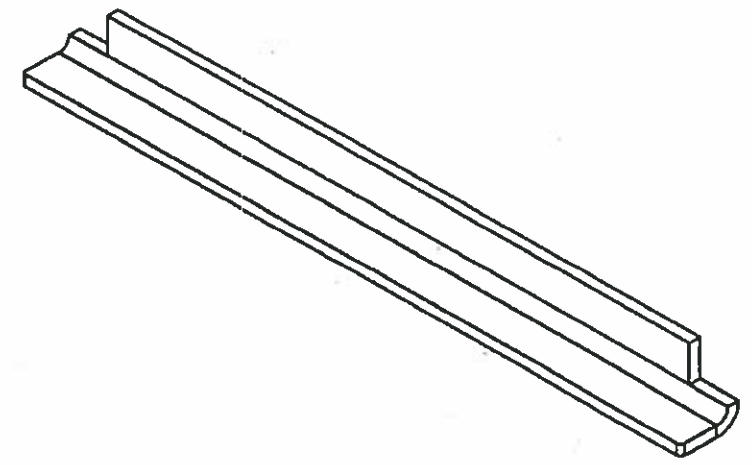
THE INFORMATION CONTAINED IN THIS DRAWING IS THE SOLE PROPERTY OF H<sup>2</sup> PRECAST INC. ANY REPRODUCTION IN PART OR WHOLE WITHOUT THE WRITTEN PERMISSION OF FM&M IS PROHIBITED.

This assembly is constructed and tested to conform with WSDOT Standard Specification 9-29.2(2), Standard Duty Junction Boxes.

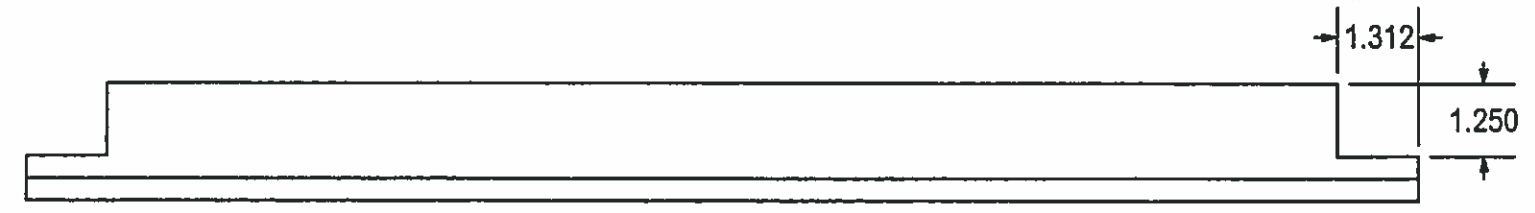
REV	DESCRIPTION	DATE	INITIALS
A	REMOVED NOTCHES FROM FLAT PATTERN.	5/14/13	DK



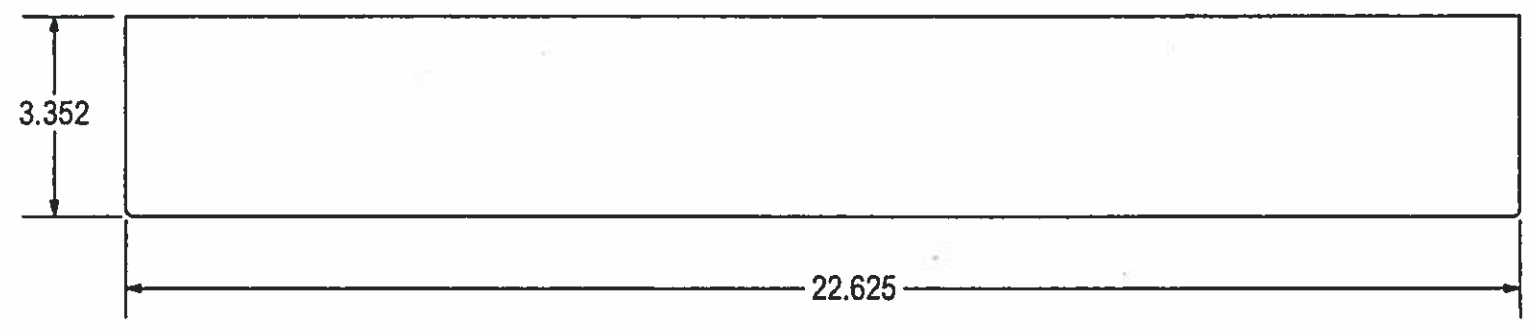
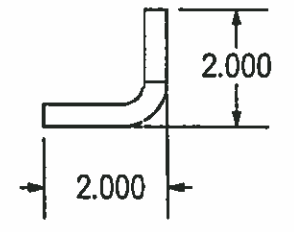
12/11/15



C  
B  
A



FORMED DETAILS



FLAT PATTERN

**APPROVED**  
 Washington State  
 Department of Transportation  
 HQ Traffic Operations Office  
 DATE Dec 15, 2015 *TAT*

3/8 HR - 22.625 X 3.352  
 X = .648 @ 90° .375 R  
 (1) PLS

25 TA WSDOT

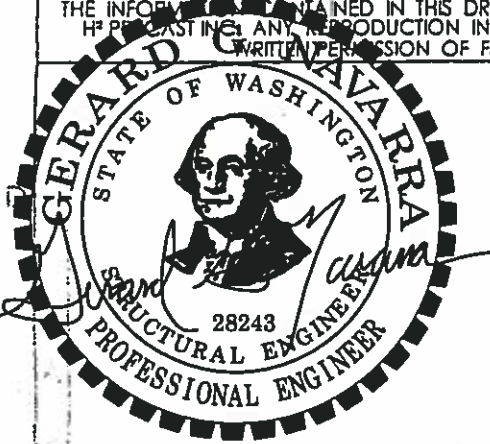
THIS DRAWING CREATED FOR MANUFACTURING REFERENCE ONLY AND IS NOT INTENDED TO SUPERCEDE H<sup>2</sup> PRECAST INC. DRAWINGS OR SPECIFICATIONS OF THE REFERENCED PART.

HOLES ± 0.003  
 X.XXX ± 0.060  
 ANGLES ± 1.0°

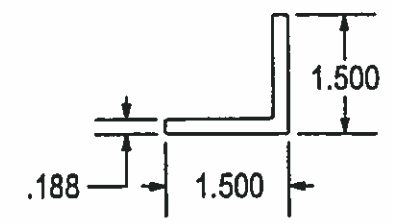
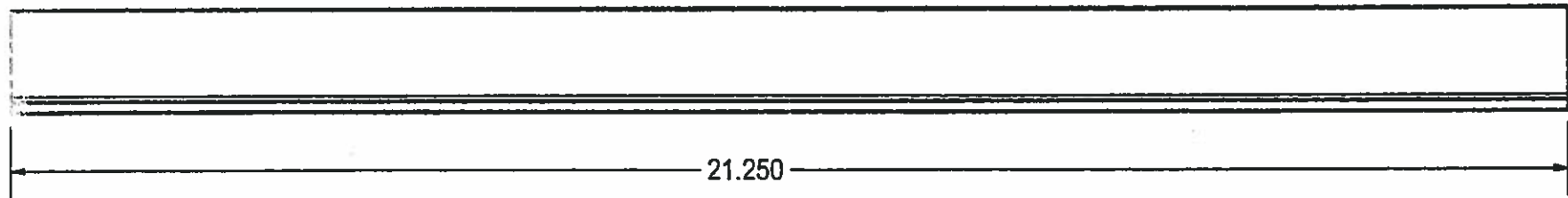
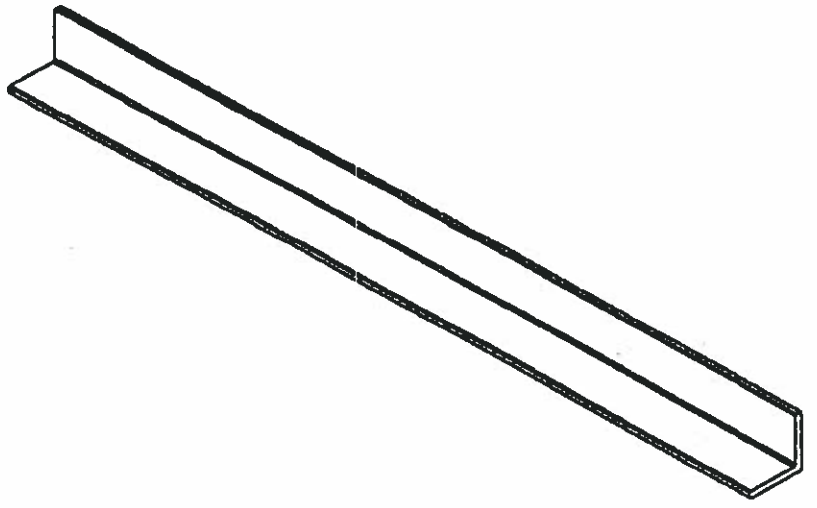
Prepared for H <sup>2</sup> PRECAST INC.			
CENTER CATCH, LID			
SIZE A	DRAWN BY: DREW KEIM	PROGRAM NUMBER: 716-S0024	REV. A
SCALE: NONE	CAD FILE: 716-S0024A	DATE CREATED: 2/8/13	SHEET 1 of 1

THE INFORMATION CONTAINED IN THIS DRAWING IS THE SOLE PROPERTY OF H<sup>2</sup> PRECAST INC. ANY REPRODUCTION IN PART OR WHOLE WITHOUT THE WRITTEN PERMISSION OF FM&M IS PROHIBITED.

This assembly is constructed and tested to conform with WSDOT Standard Specification 9-29.2(2), Standard Duty Junction Boxes.



12/11/15



**APPROVED**  
 Washington State  
 Department of Transportation  
 HQ Traffic Operations Office  
 DATE Dec 15, 2015 TAT

1-1/2 X 1-1/2 X 3/16 ANGLE - 21.250 LONG  
 (2) REQ'D

25 TA WSDOT

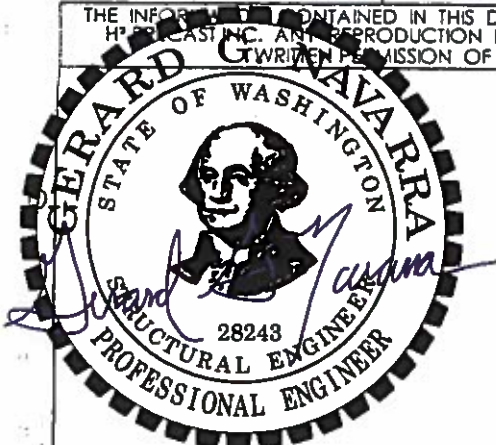
THIS DRAWING CREATED FOR MANUFACTURING REFERENCE ONLY AND IS NOT INTENDED TO SUPERCEDE H<sup>2</sup> PRECAST INC. DRAWINGS OR SPECIFICATIONS OF THE REFERENCED PART.

HOLES ± 0.003  
 X.XXX ± 0.060  
 ANGLES ± 1.0°

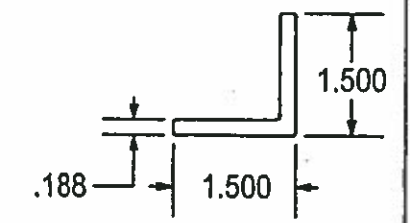
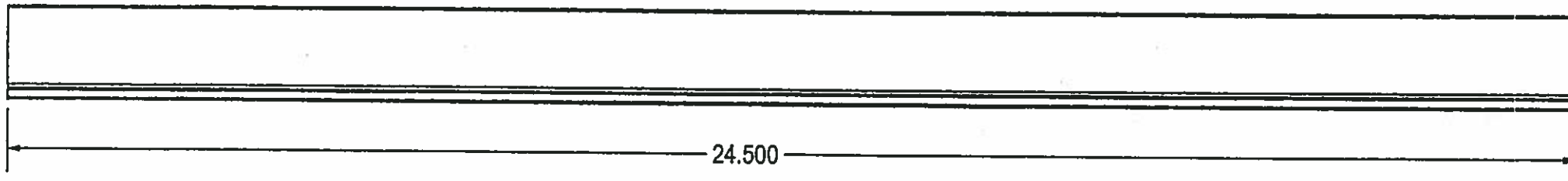
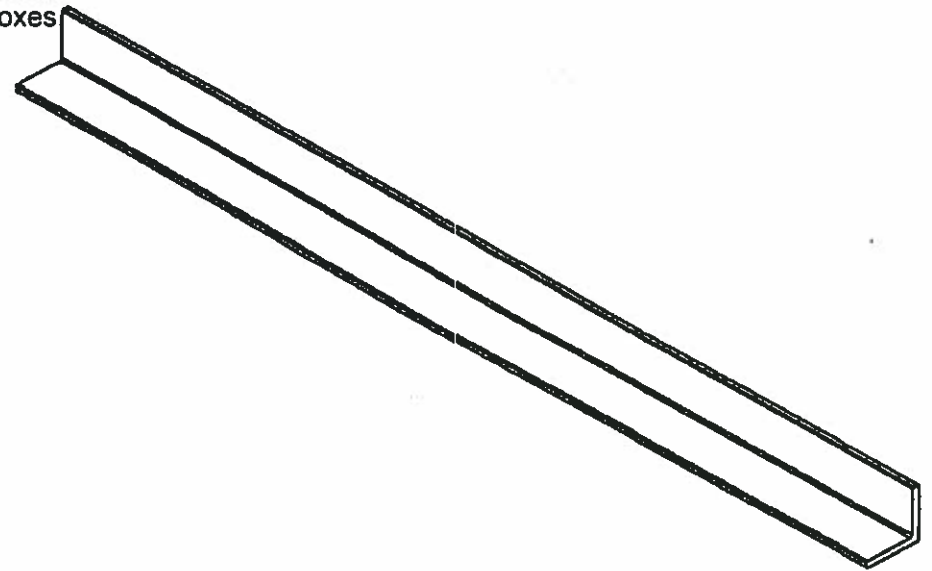
Prepared for H <sup>2</sup> PRECAST INC.			
LID SUPPORT, SHORT			
SIZE A	DRAWN BY: DREW KEIM	PROGRAM NUMBER: 716-F0025	REV.
SCALE: NONE	CAD FILE: 716-F0025	DATE CREATED: 2/8/13	SHEET 1 of 1

THE INFORMATION CONTAINED IN THIS DRAWING IS THE SOLE PROPERTY OF H<sup>2</sup> PRECAST INC. ANY REPRODUCTION IN PART OR WHOLE WITHOUT THE WRITTEN PERMISSION OF FM&M IS PROHIBITED.

This assembly is constructed and tested to conform with WSDOT Standard Specification 9-29.2(2), Standard Duty Junction Boxes



12/11/15



**APPROVED**  
Washington State  
Department of Transportation  
HQ Traffic Operations Office  
DATE Dec 15, 2015 *TAT*

1-1/2 X 1-1/2 X 3/16 ANGLE - 24.500 LONG  
(2) REQ'D

25 TA WSDOT

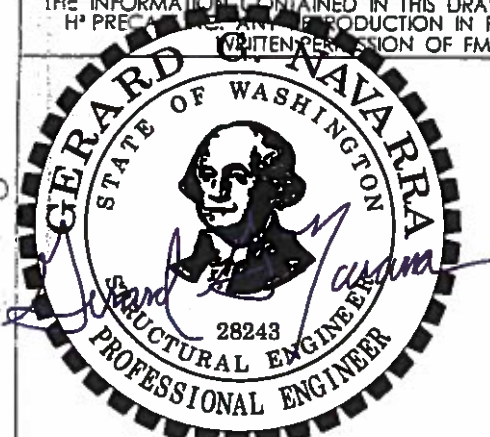
THIS DRAWING CREATED FOR MANUFACTURING REFERENCE ONLY AND IS NOT INTENDED TO SUPERCEDE H<sup>2</sup> PRECAST INC. DRAWINGS OR SPECIFICATIONS OF THE REFERENCED PART.

HOLES ± 0.003  
X.XXX ± 0.060  
ANGLES ± 1.0°

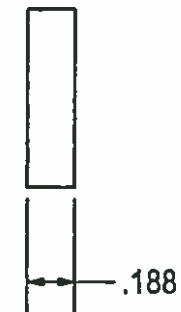
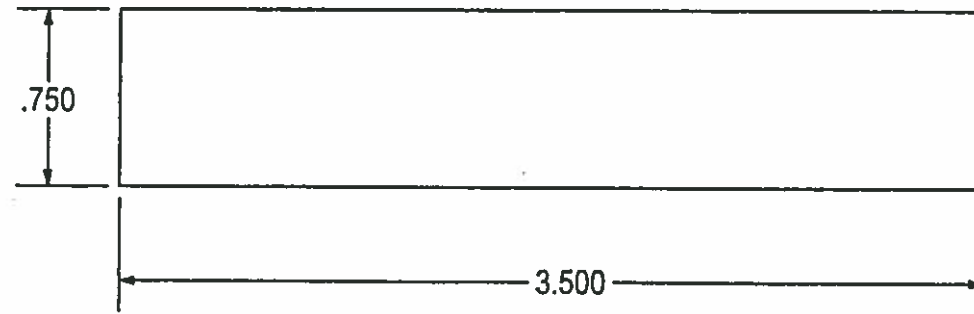
Prepared for H <sup>2</sup> PRECAST INC.			
LID SUPPORT, LONG			
SIZE A	DRAWN BY: DREW KEIM	PROGRAM NUMBER: 716-F0027	REV.
SCALE :NONE	CAD FILE: 716-F0027	DATE CREATED: 2/8/13	SHEET 1 of 1

THE INFORMATION CONTAINED IN THIS DRAWING IS THE SOLE PROPERTY OF H<sup>®</sup> PRECAST INC. ANY REPRODUCTION IN PART OR WHOLE WITHOUT THE WRITTEN PERMISSION OF FM&M IS PROHIBITED.

This assembly is constructed and tested to conform with WSDOT Standard Specification 9-29.2(2), Standard Duty Junction Boxes.



12/11/15



**APPROVED**

Washington State  
Department of Transportation  
HQ Traffic Operations Office  
DATE Dec 15, 2015 TAT

3/16 X 3/4 HRFB - 3.500 LONG  
(1) PLS

25 TA WSDOT

Prepared for H<sup>®</sup> PRECAST INC.

RIB, CENTER

THIS DRAWING CREATED FOR MANUFACTURING REFERENCE ONLY AND IS NOT INTENDED TO SUPERCEDE H<sup>®</sup> PRECAST INC. DRAWINGS OR SPECIFICATIONS OF THE REFERENCED PART.

HOLES ± 0.003  
X.XXX ± 0.060  
ANGLES ± 1.0°

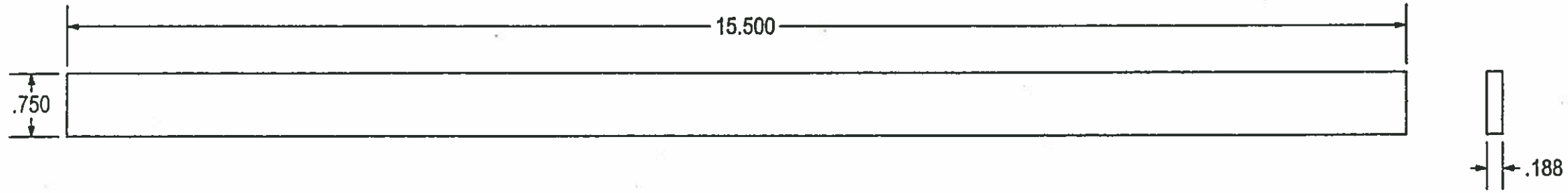
SIZE A	DRAWN BY: DREW KEIM	PROGRAM NUMBER: 716-F0026	REV.
SCALE: NONE	CAD FILE: 716-F0026	DATE CREATED: 2/8/13	SHEET 1 of 1

THE INFORMATION CONTAINED IN THIS DRAWING IS THE SOLE PROPERTY OF H<sup>2</sup> PRECAST INC. ANY REPRODUCTION IN PART OR WHOLE WITHOUT THE WRITTEN PERMISSION OF FM&M IS PROHIBITED.

This assembly is constructed and tested to conform with WSDOT Standard Specification 9-29.2(2), Standard Duty Junction Boxes.



12/11/15



**APPROVED**  
Washington State  
Department of Transportation  
HQ Traffic Operations Office  
DATE Dec 15, 2015 TAT

3/16 X 3/4 HRFB - 15.500 LONG  
(2) PLS

25 TA WSDOT

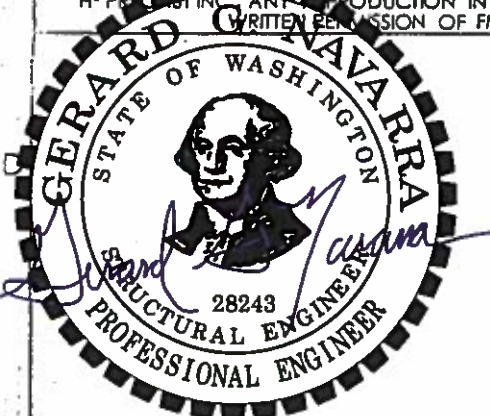
THIS DRAWING CREATED FOR MANUFACTURING REFERENCE ONLY AND IS NOT INTENDED TO SUPERCEDE H<sup>2</sup> PRECAST INC. DRAWINGS OR SPECIFICATIONS OF THE REFERENCED PART.

HOLES ± 0.003  
X.XXX ± 0.060  
ANGLES ± 1.0°

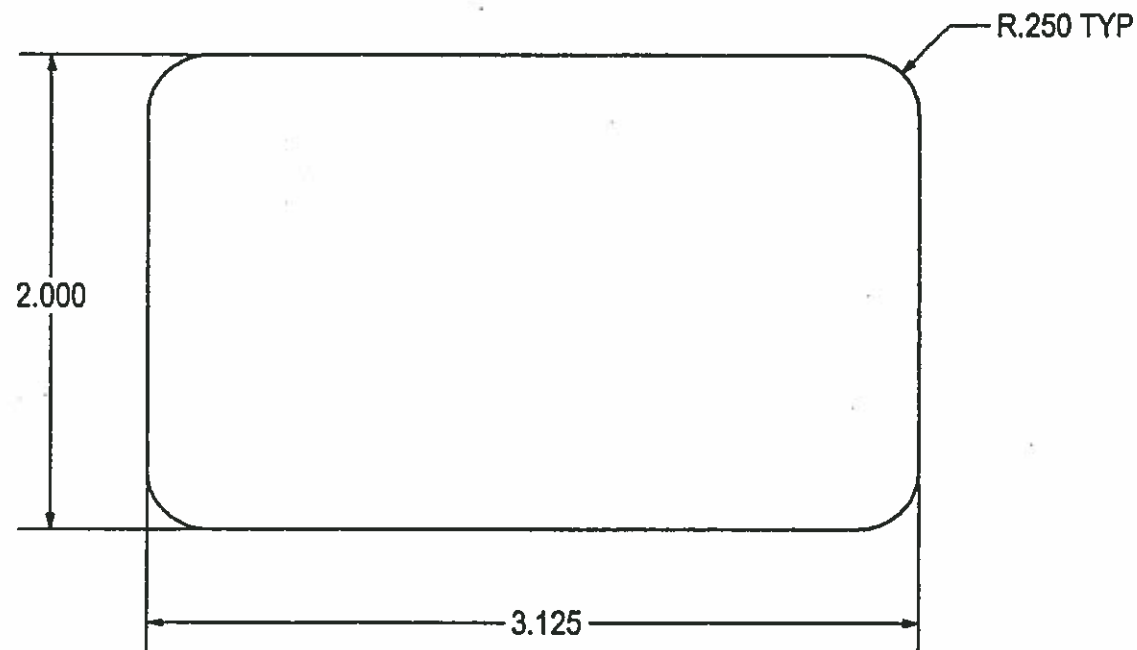
Prepared for H <sup>2</sup> PRECAST INC.			
RIB, SIDE			
SIZE A	DRAWN BY: DREW KEIM	PROGRAM NUMBER: 716-F0024	REV.
SCALE: NONE	CAD FILE: 716-F0024	DATE CREATED: 2/8/13	SHEET 1 of 1

THE INFORMATION CONTAINED IN THIS DRAWING IS THE SOLE PROPERTY OF H<sup>2</sup> PRECAST INC. ANY REPRODUCTION IN PART OR WHOLE WITHOUT THE WRITTEN PERMISSION OF FM&M IS PROHIBITED.

This assembly is constructed and tested to conform with WSDOT Standard Specification 9-29.2(2), Standard Duty Junction Boxes.



12/11/15



**APPROVED**

Washington State  
Department of Transportation  
HQ Traffic Operations Office

DATE Dec 15, 2015 TAT

1/4 HR - 3.125 X 2.000  
(1) REQ'D

THIS DRAWING CREATED FOR MANUFACTURING REFERENCE ONLY AND IS NOT INTENDED TO SUPERCEDE H<sup>2</sup> PRECAST INC. DRAWINGS OR SPECIFICATIONS OF THE REFERENCED PART.

UNIVERSAL PART  
USED ON:  
25 TA WSDOT  
3030 STD STL

Prepared for H<sup>2</sup> PRECAST INC.

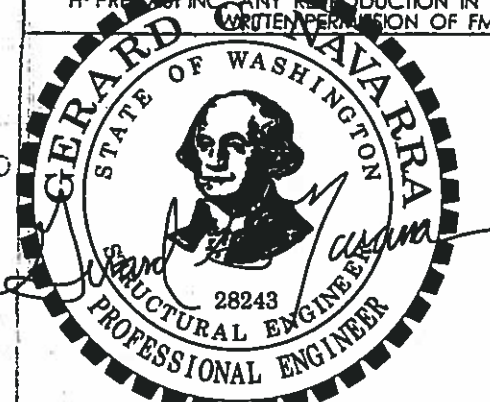
**HANDLE STOP**

SIZE A	DRAWN BY: CREW KEIM	PROGRAM NUMBER: <b>716-S0014</b>	REV.
SCALE: NONE		DATE CREATED: 12/11/12	
CAD FILE: 716-S0014		SHEET 1 of 1	

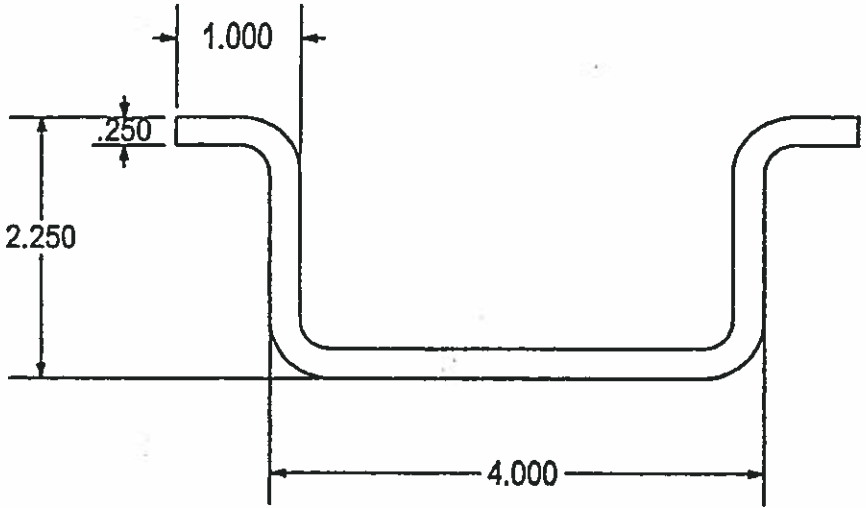
THE INFORMATION CONTAINED IN THIS DRAWING IS THE SOLE PROPERTY OF H<sup>P</sup> PRECAST INC. ANY REPRODUCTION IN PART OR WHOLE WITHOUT THE WRITTEN PERMISSION OF FM&M IS PROHIBITED.

This assembly is constructed and tested to conform with WSDOT Standard Specification 9-29.2(2), Standard Duty Junction Boxes.

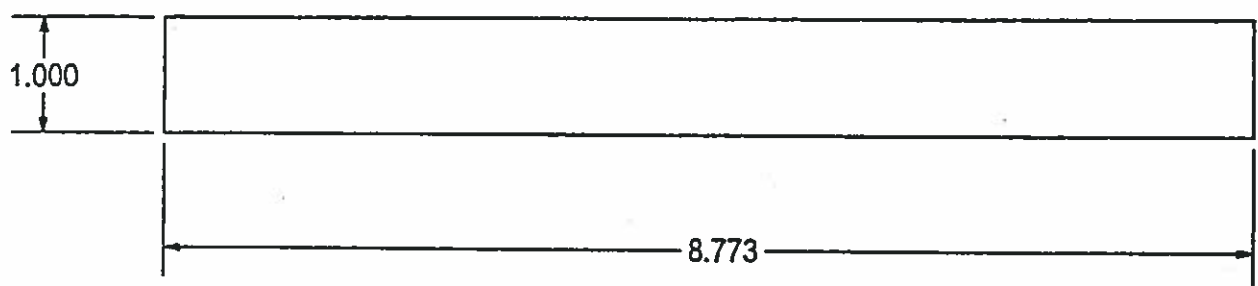
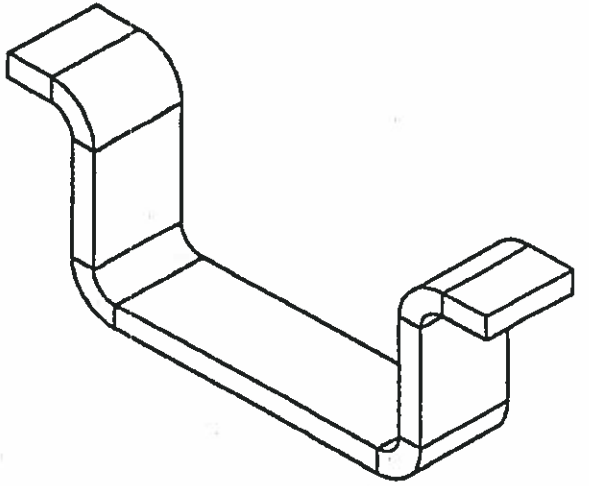
REV	DESCRIPTION	DATE	INITIALS
NP	NEW FAB PART. WAS S/M 716-S0013.	2/14/13	DK



12/11/15



FORMED DETAILS



FLAT PATTERN

**APPROVED**  
 Washington State  
 Department of Transportation  
 HQ Traffic Operations Office  
 DATE Dec 15, 2015 *TAT*

1/4 X 1.000 HRFB X 8.773  
 X = .432 @ 90° .250 R  
 (1) REQ'D

UNIVERSAL PART,  
 USED ON:  
 2436 SDOT (SLIP)  
 25 TA WSDOT  
 3030 STD STL

Prepared for H<sup>P</sup> PRECAST INC.

**HANDLE**

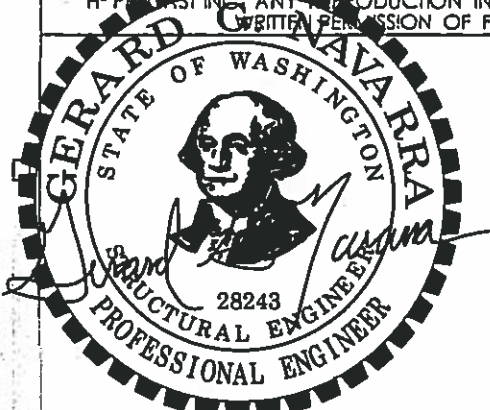
Holes ± 0.003 X.XXX ± 0.060 Angles ± 1.0°	SIZE A	DRAWN BY: DREW KERM	PROGRAM NUMBER: 716-F0031	REV. NP
	SCALE: NONE	CAD FILE: 716-F0031	DATE CREATED: 12/10/12	SHEET 1 of 1

THIS DRAWING CREATED FOR MANUFACTURING REFERENCE ONLY AND IS NOT INTENDED TO SUPERCEDE H<sup>P</sup> PRECAST INC. DRAWINGS OR SPECIFICATIONS OF THE REFERENCED PART.

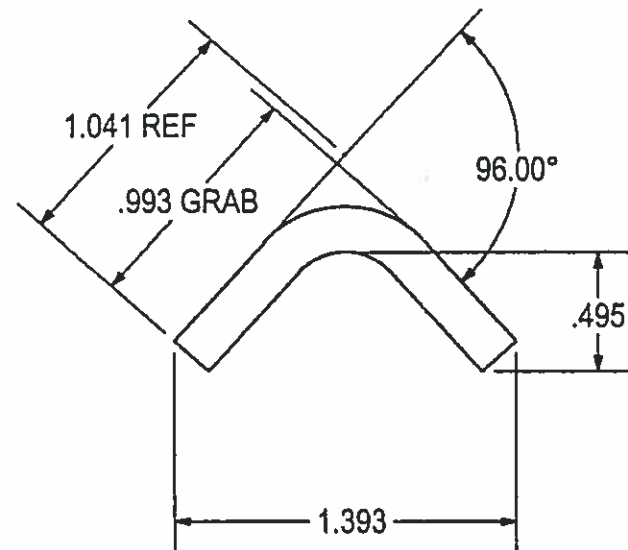
THE INFORMATION CONTAINED IN THIS DRAWING IS THE SOLE PROPERTY OF H<sup>2</sup> PRECAST INC. ANY REPRODUCTION IN PART OR WHOLE WITHOUT THE WRITTEN PERMISSION OF FM&M IS PROHIBITED.

This assembly is constructed and tested to conform with WSDOT Standard Specification 9-29.2(2), Standard Duty Junction Boxes.

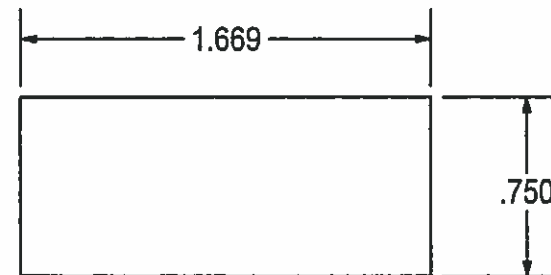
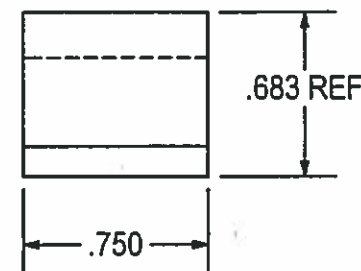
REV	DESCRIPTION	DATE	INITIALS
B	3/16 X 3/4 HRFB WAS 3/16 X 1 X 1 ANGLE.	4/23/13	DK



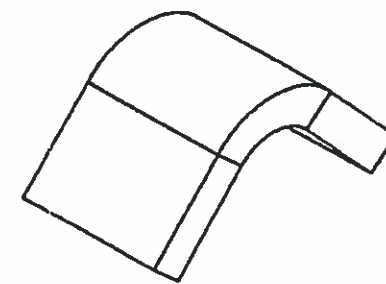
12/11/15



FORM DETAIL



FLAT PATTERN



UNIVERSAL PART, USED ON:	# REQ'D
2436 SDOT (SLIP)	4
2436 STD (STL)	4
2436 WSDOT (STL)	4
25 TA WSDOT	8
3030 STD STL	4

**APPROVED**  
 Washington State  
 Department of Transportation  
 HQ Traffic Operations Office  
 DATE Dec 15, 2015 TAT

3/16 X 3/4 HRFB - 1.669 LONG  
 X = .413 @ 96.32° .250 R

THIS DRAWING CREATED FOR MANUFACTURING REFERENCE ONLY AND IS NOT INTENDED TO SUPERCEDE H<sup>2</sup> PRECAST INC. DRAWINGS OR SPECIFICATIONS OF THE REFERENCED PART.

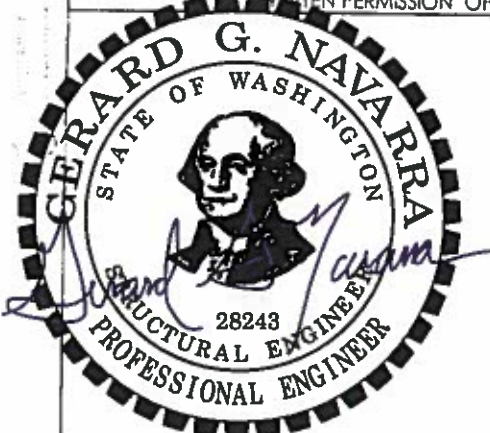
HOLES ± 0.003  
 X.XXX ± 0.015  
 ANGLES ± 1.0°

Prepared for H <sup>2</sup> PRECAST INC.			
RETAINER, HINGE PIN			
SIZE A	DRAWN BY: DREW KEW	PROGRAM NUMBER: 716-F0004	REV. B
SCALE: NONE	CAD FILE: 716-F0004B	DATE CREATED: 12/8/2012	SHEET 1 of 1

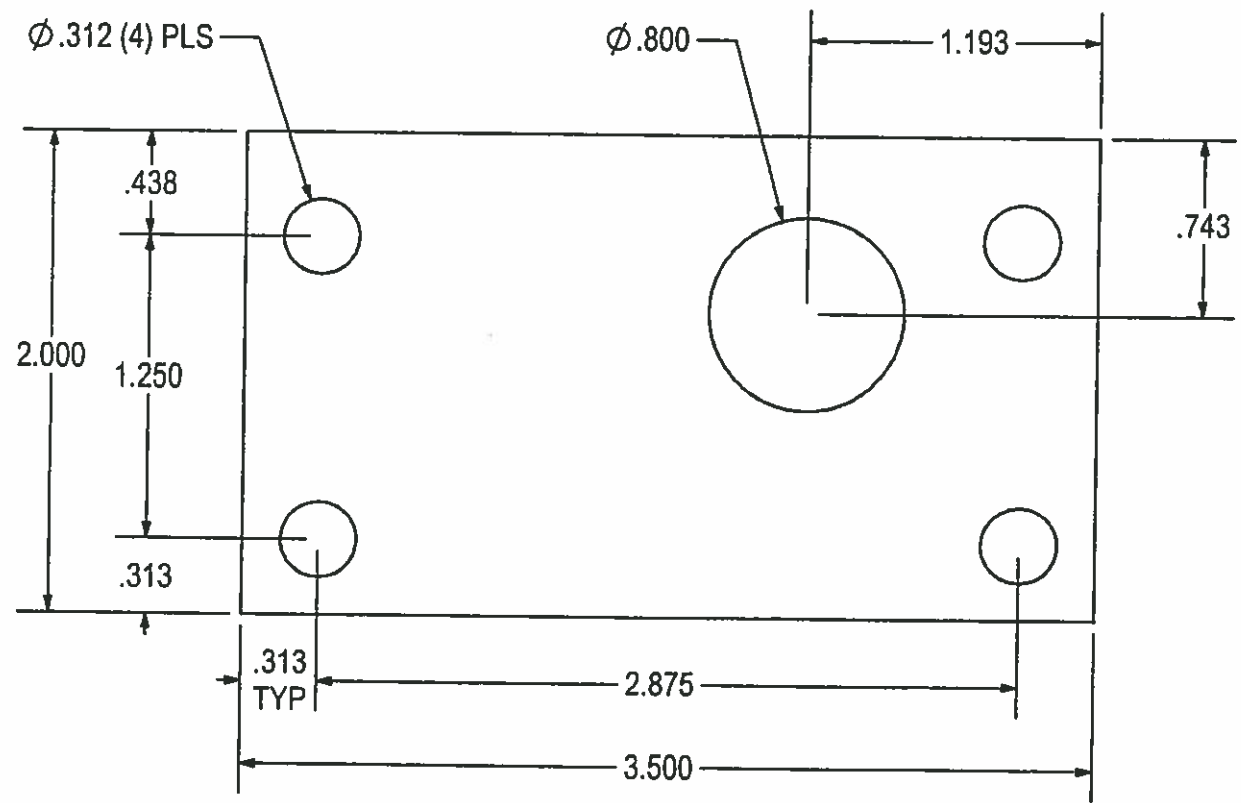


THE INFORMATION CONTAINED IN THIS DRAWING IS THE SOLE PROPERTY OF H<sup>2</sup> PRECAST INC. ANY REPRODUCTION IN PART OR WHOLE WITHOUT THE WRITTEN PERMISSION OF FM&M IS PROHIBITED.

This assembly is constructed and tested to conform with WSDOT Standard Specification 9-29.2(2), Standard Duty Junction Boxes.



12/11/15



- UNIVERSAL PART,  
USED ON:
- 2436 GPUD (1) PLS
  - 2436 SDOT (SLIP) (1) PLS
  - 2436 WSDOT (STL) (1) PLS
  - 25TA WSDOT (1) PLS
  - 3030 STD STL (1) PLS
  - 3636 STD AJU (1) PLS
  - VD13-P-GPUD (1) PLS

**APPROVED**  
Washington State  
Department of Transportation  
HQ Traffic Operations Office  
DATE Dec 15, 2015 TAT

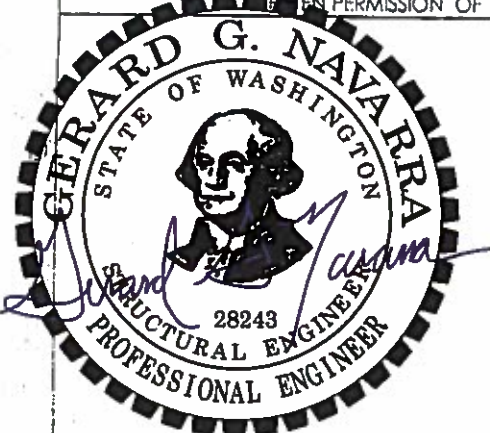
1/8" THK RUBBER GSKT - 3.500 X 2.000

THIS DRAWING CREATED FOR MANUFACTURING REFERENCE ONLY AND IS NOT INTENDED TO SUPERCEDE H<sup>2</sup> PRECAST INC. DRAWINGS OR SPECIFICATIONS OF THE REFERENCED PART.

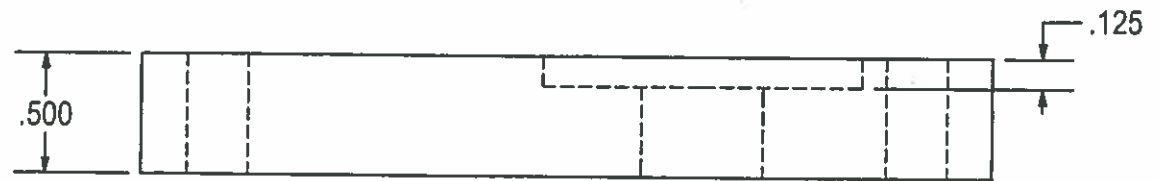
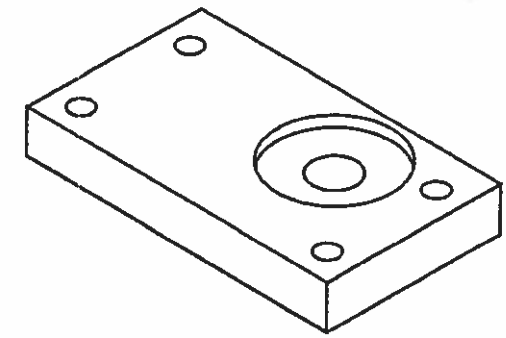
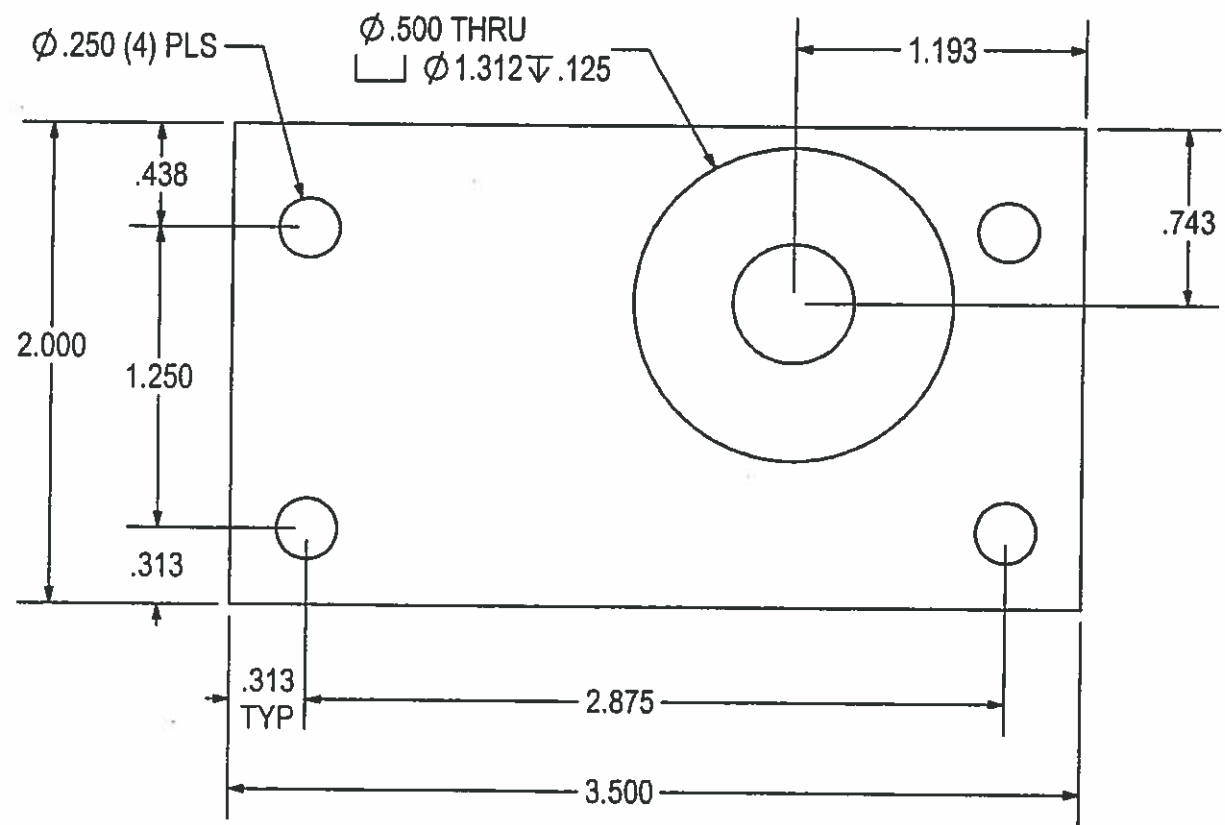
HOLES ± 0.003		Prepared for H <sup>2</sup> PRECAST INC.	
X.X ± 0.060		LID LATCH GASKET	
X.XX ± 0.030		SIZE A	DRAWN BY: DREW KEIM
X.XXX ± 0.015		PROGRAM NUMBER: 100-03383	
ANGLES ± 1.0°		DATE CREATED: 8/13/12	
SCALE: NONE		CAD FILE: 100-03383	SHEET 1 of 1

THE INFORMATION CONTAINED IN THIS DRAWING IS THE SOLE PROPERTY OF H<sup>2</sup> PRECAST INC. ANY REPRODUCTION IN PART OR WHOLE WITHOUT THE WRITTEN PERMISSION OF FM&M IS PROHIBITED.

This assembly is constructed and tested to conform with WSDOT Standard Specification 9-29.2(2), Standard Duty Junction Boxes.



12/11/15



- UNIVERSAL PART,  
USED ON:
- 2436 GPUD (2) PLS
  - 2436 SDOT (SLIP) (2) PLS
  - 2436 WSDOT (STL) (2) PLS
  - 25TA WSDOT (1) PLS
  - 3030 STD STL (2) PLS
  - 3636 STD ALU (1) PLS
  - VD13-P-GPUD (1) PLS

**APPROVED**  
Washington State  
Department of Transportation  
HQ Traffic Operations Office  
DATE Dec 15, 2015 TAT

1/2" NYLON - 3.500 X 2.000

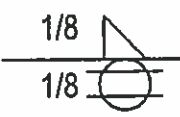
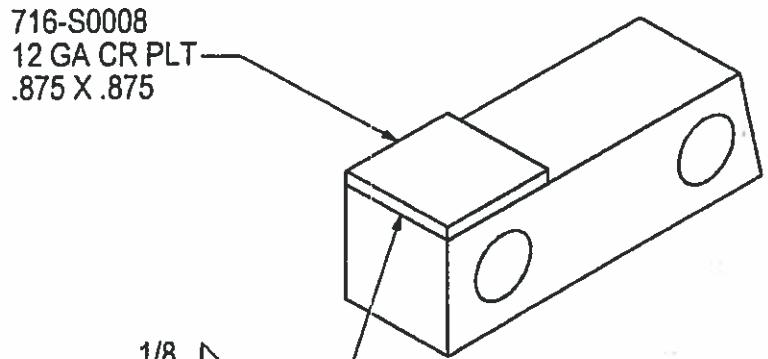
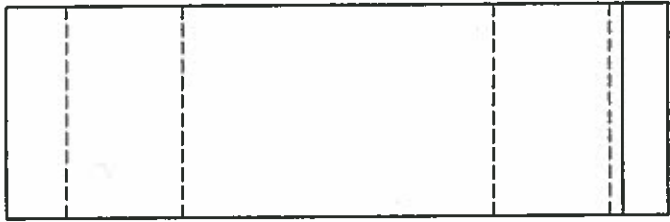
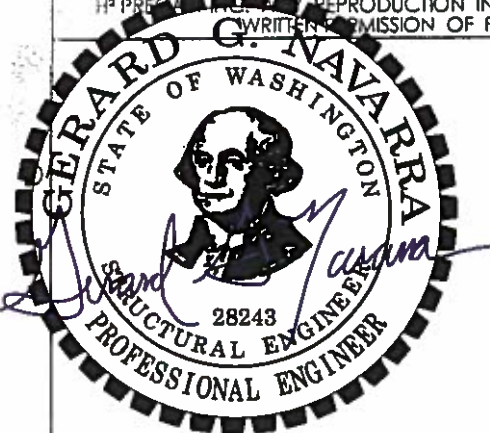
THIS DRAWING CREATED FOR MANUFACTURING REFERENCE ONLY AND IS NOT INTENDED TO SUPERCEDE H<sup>2</sup> PRECAST INC. DRAWINGS OR SPECIFICATIONS OF THE REFERENCED PART.

HOLES ± 0.003	Prepared for H <sup>2</sup> PRECAST INC.		
X.X ± 0.060	LID LATCH SPACER ✓		
X.XX ± 0.030	SIZE A	DRAWN BY: DREV KEIM	PROGRAM NUMBER: 100-11136
X.XXX ± 0.015		DATE CREATED: 8/13/12	REV.
ANGLES ± 1.0°	SCALE: NONE	CAD FILE: 100-11136	SHEET 1 of 1

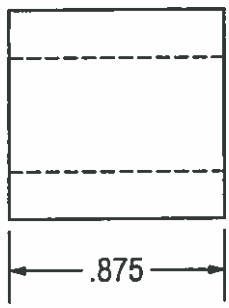
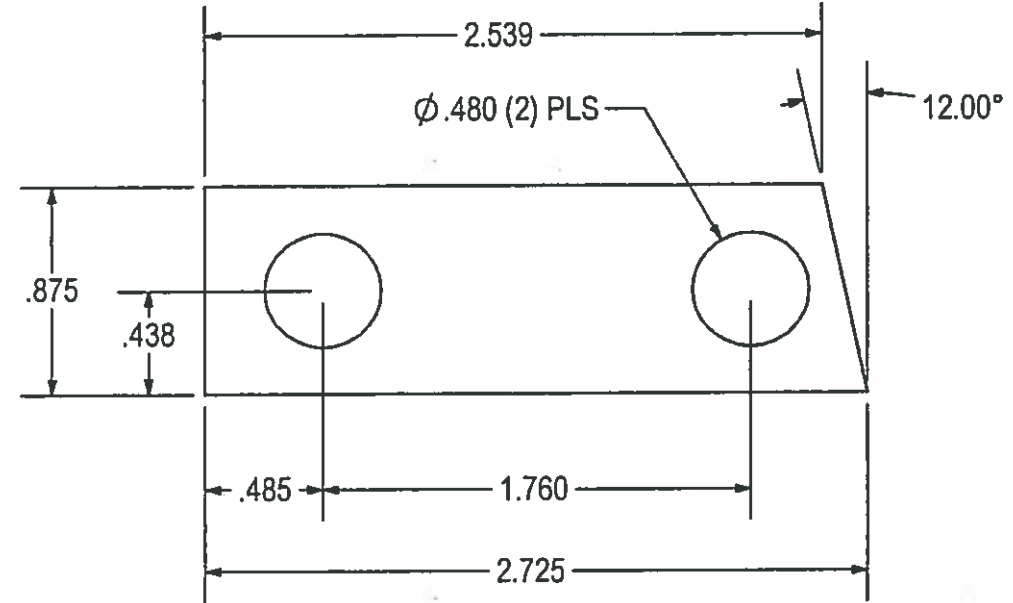
THE INFORMATION CONTAINED IN THIS DRAWING IS THE SOLE PROPERTY OF H<sup>2</sup> PRECAST INC. REPRODUCTION IN PART OR WHOLE WITHOUT THE WRITTEN PERMISSION OF FM&M IS PROHIBITED.

This assembly is constructed and tested to conform with WSDOT Standard Specification 9-29.2(2), Standard Duty Junction Boxes.

REV	DESCRIPTION	DATE	INITIALS
A	Ø.480 HOLES (2 PLS) WERE Ø.165. INCREASE TO ACCOMMODATE GALVANIZING.	4/12/13	DK



WELD DETAIL - 700-00019



UNIVERSAL PART,  
USED ON:  
2436 GPUD (2) PLS  
2436 SDOT (SLIP) (2) PLS  
2436 WSDOT (STL) (2) PLS  
25TA WSDOT (4) PLS  
3030 STD STL (2) PLS

**APPROVED**  
Washington State  
Department of Transportation  
HQ Traffic Operations Office  
DATE Dec 15, 2015 TAT

7/8" SQR BAR STOCK - 2.725 LONG

THIS DRAWING CREATED FOR MANUFACTURING REFERENCE ONLY AND IS NOT INTENDED TO SUPERCEDE H<sup>2</sup> PRECAST INC. DRAWINGS OR SPECIFICATIONS OF THE REFERENCED PART.

HINGE BLOCK WELD ASSEMBLY: 700-00019

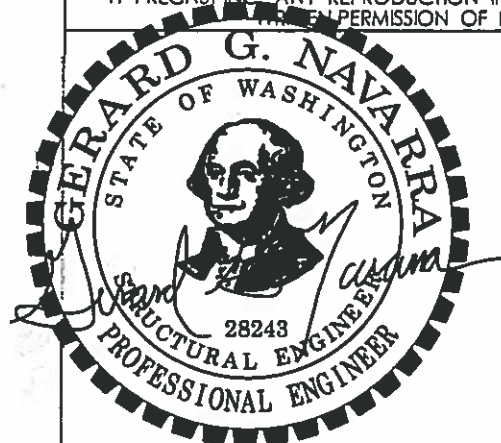
Prepared for H<sup>2</sup> PRECAST INC.

HINGE BLOCK			
SIZE A	DRAWN BY: DREW KEM	PROGRAM NUMBER: 100-11141 DATE CREATED: 12/7/2012	REV. A
SCALE: NONE	CAD FILE: 100-11141A	SHEET 1 of 1	

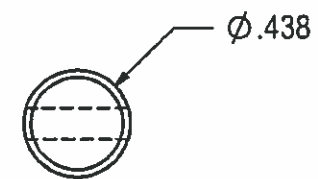
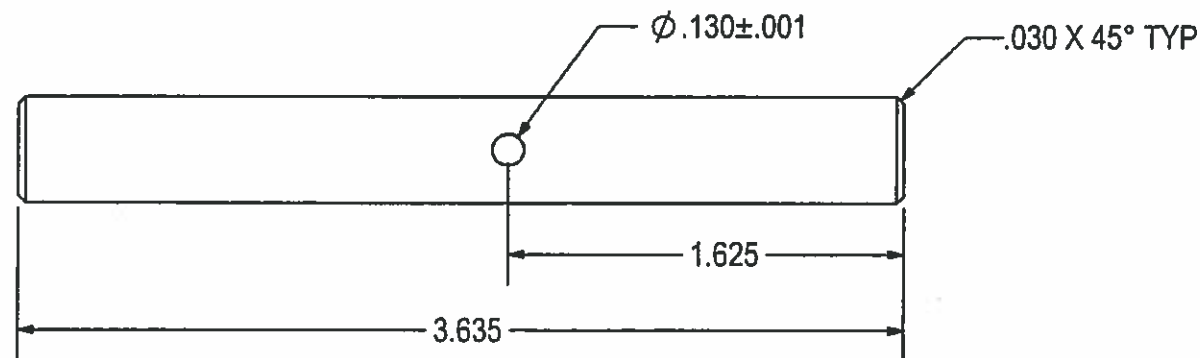
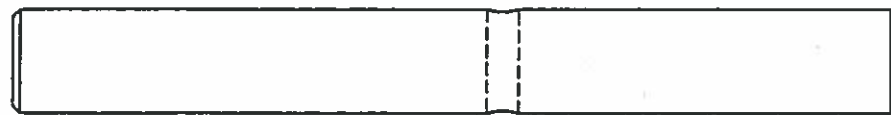
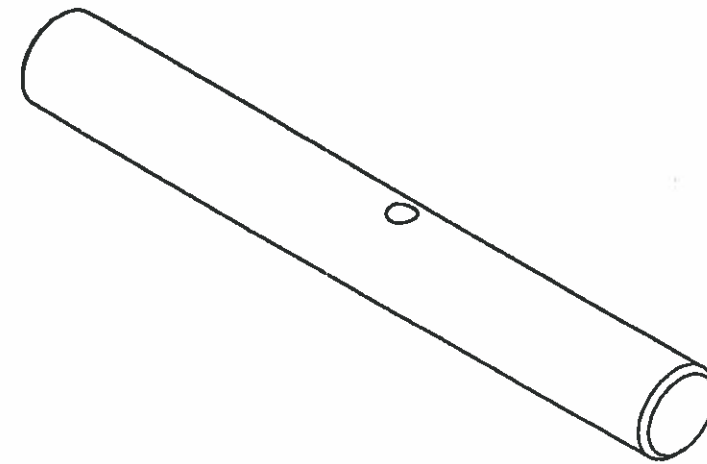
THE INFORMATION CONTAINED IN THIS DRAWING IS THE SOLE PROPERTY OF H<sup>2</sup> PRECAST INC. ANY REPRODUCTION IN PART OR WHOLE WITHOUT THE PERMISSION OF FM&M IS PROHIBITED.

This assembly is constructed and tested to conform with WSDOT Standard Specification 9-29.2(2), Standard Duty Junction Boxes.

REV	DESCRIPTION	DATE	INITIALS
A	Ø.130 HOLE WAS Ø.125	4/12/13	DK



12/11/15



UNIVERSAL PART,  
USED ON:  
2436 GPUD (2) PLS  
2436 SDOT (SLIP) (2) PLS  
2436 WSDOT (STL) (2) PLS  
25TA WSDOT (4) PLS  
3030 STD STL (2) PLS

**APPROVED**  
Washington State  
Department of Transportation  
HQ Traffic Operations Office  
DATE Dec 15, 2015 TAT

7/16" 18-8 SS - 3.635" LONG

THIS DRAWING CREATED FOR MANUFACTURING REFERENCE ONLY AND IS NOT INTENDED TO SUPERCEDE H<sup>2</sup> PRECAST INC. DRAWINGS OR SPECIFICATIONS OF THE REFERENCED PART.

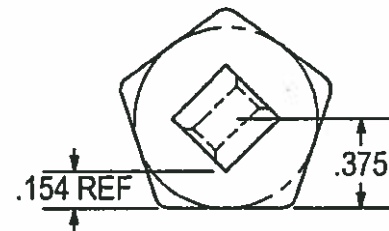
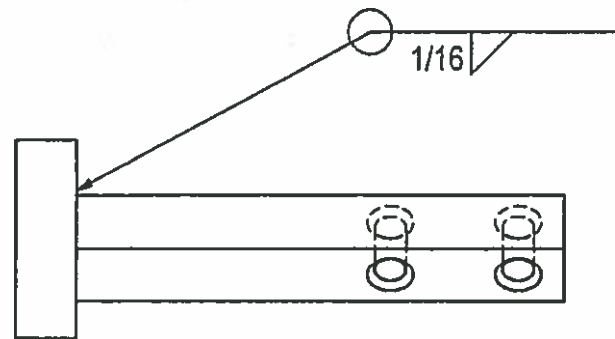
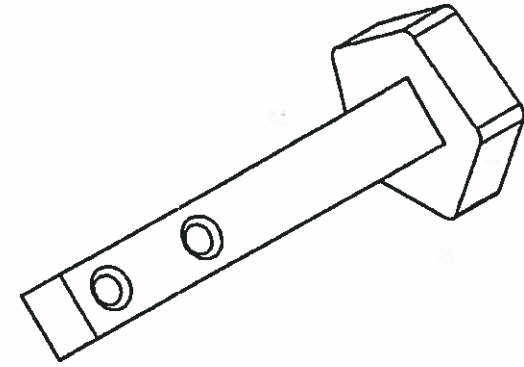
Prepared for H <sup>2</sup> PRECAST INC.			
HINGE PIN			
SIZE A	DRAWN BY: DREW KEIM	PROGRAM NUMBER: 100-11142 DATE CREATED: 12/7/2012	REV. A
SCALE: NONE	CAD FILE: 100-11142A	SHEET 1 of 1	

THE INFORMATION CONTAINED IN THIS DRAWING IS THE SOLE PROPERTY OF H<sup>2</sup> PRECAST INC. ANY REPRODUCTION IN PART OR WHOLE WITHOUT THE WRITTEN PERMISSION OF FM&M IS PROHIBITED.

This assembly is constructed and tested to conform with WSDOT Standard Specification 9-29.2(2), Standard Duty Junction Boxes.



12/11/15



WELD DETAIL

UNIVERSAL PART,  
USED ON:  
2436 GPUD  
2436 STND STL  
2436 WSDOT (STL)  
25 TA WSDOT  
3030 STD STL  
3636 STD ALUM  
VD13-P-GPUD

2	716-S0001	PENTA HEAD	1
1	100-11146	PIN SHAFT, PENTA HEAD	1
#	SKU#	DESCRIPTION	QTY

PARTS LIST

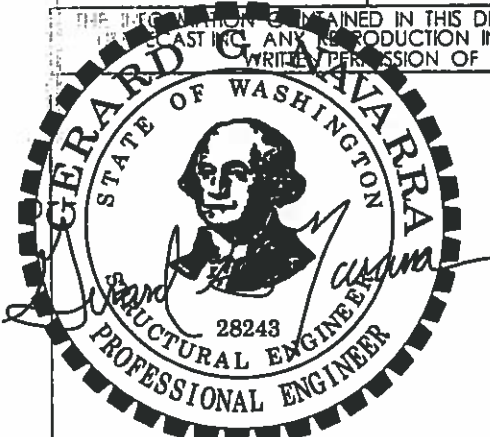
Prepared for H<sup>2</sup> PRECAST INC.

PENTA HEAD PIN - WELD ASSEMBLY

SIZE A	DRAWN BY: DREW KEIM	PROGRAM NUMBER: 700-00020	REV.
SCALE: NONE		DATE CREATED: 1/15/13	
CAD FILE: 716-P0022		SHEET 1 of 1	

**APPROVED**  
Washington State  
Department of Transportation  
HQ Traffic Operations Office  
DATE Dec 15, 2015 TAT

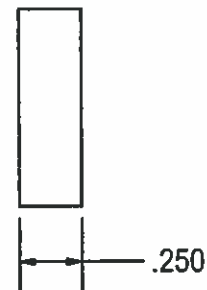
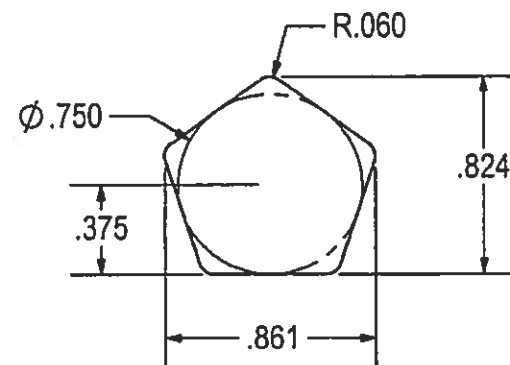
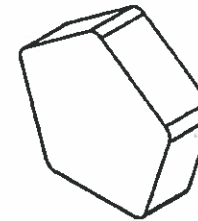
THIS DRAWING CREATED FOR MANUFACTURING REFERENCE ONLY AND IS NOT INTENDED TO SUPERCEDE H<sup>2</sup> PRECAST INC. DRAWINGS OR SPECIFICATIONS OF THE REFERENCED PART.



12/11/15

THE INFORMATION CONTAINED IN THIS DRAWING IS THE SOLE PROPERTY OF FM&M. ANY REPRODUCTION IN PART OR WHOLE WITHOUT THE WRITTEN PERMISSION OF FM&M IS PROHIBITED.

This assembly is constructed and tested to conform with WSDOT Standard Specification 9-29.2(2), Standard Duty Junction Boxes.



UNIVERSAL PART,  
 USED ON:  
 2436 GPUD  
 2436 STND STL  
 2436 SDOT (SLIP)  
 2436 WSDOT (STL)  
 25 TA WSDOT  
 3030 STD STL  
 3636 STD ALUM  
 OC SINGLE  
 VD13-P-GPUD

**APPROVED**  
 Washington State  
 Department of Transportation  
 HQ Traffic Operations Office  
 DATE Dec 15, 2015 TAT

1/4 304SS - .861 X .825  
 (1) REQ'D

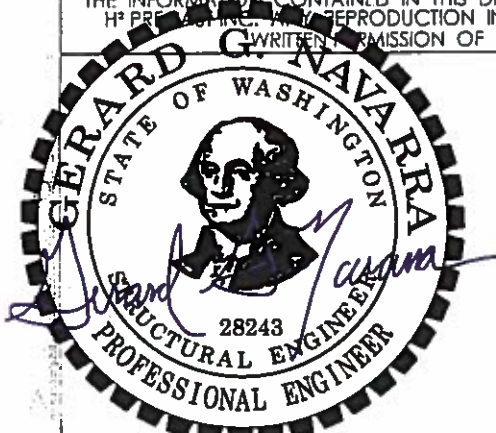
THIS DRAWING CREATED FOR MANUFACTURING REFERENCE ONLY  
 AND IS NOT INTENDED TO SUPERCEDE H<sup>2</sup> PRECAST INC. DRAWINGS  
 OR SPECIFICATIONS OF THE REFERENCED PART.

Prepared for H <sup>2</sup> PRECAST INC.			
PENTA HEAD			
SIZE A	DRAWN BY: DREW KEIM	PROGRAM NUMBER: 716-S0001	REV.
		DATE CREATED: 1/15/13	
SCALE :NONE	CAD FILE: 716-S0001	SHEET 1 of 1	

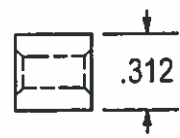
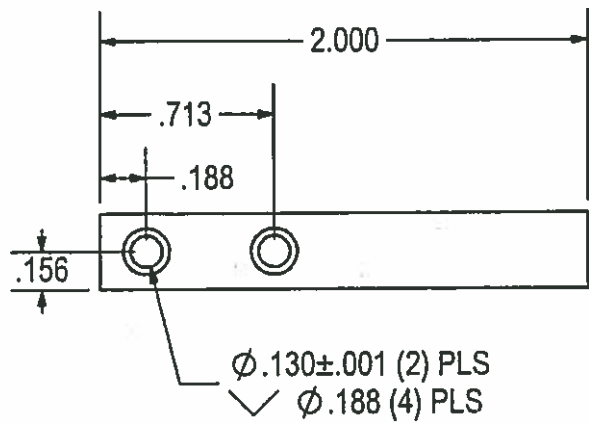
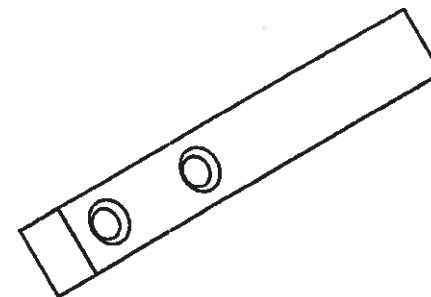
THE INFORMATION CONTAINED IN THIS DRAWING IS THE SOLE PROPERTY OF H<sup>2</sup> PRECAST INC. REPRODUCTION IN PART OR WHOLE WITHOUT THE WRITTEN PERMISSION OF FM&M IS PROHIBITED.

This assembly is constructed and tested to conform with WSDOT Standard Specification 9-29.2(2), Standard Duty Junction Boxes.

REV	DESCRIPTION	DATE	INITIALS
B	Ø.130 HOLES WERE Ø.125.	4/11/13	DK



12/11/15



PART DETAIL

UNIVERSAL PART,  
USED ON:  
2436 GPUD  
2436 STND STL  
2436 WSDOT (STL)  
25TA WSDOT  
3030 STD STL  
3636 STD ALUM  
VD13-P-GPUD

**APPROVED**  
Washington State  
Department of Transportation  
HQ Traffic Operations Office  
DATE Dec 15, 2015 **TAT**

5/16 SQR BAR, 304SS - 2.000" LONG  
(1) PLS

THIS DRAWING CREATED FOR MANUFACTURING REFERENCE ONLY AND IS NOT INTENDED TO SUPERCEDE H<sup>2</sup> PRECAST INC. DRAWINGS OR SPECIFICATIONS OF THE REFERENCED PART.

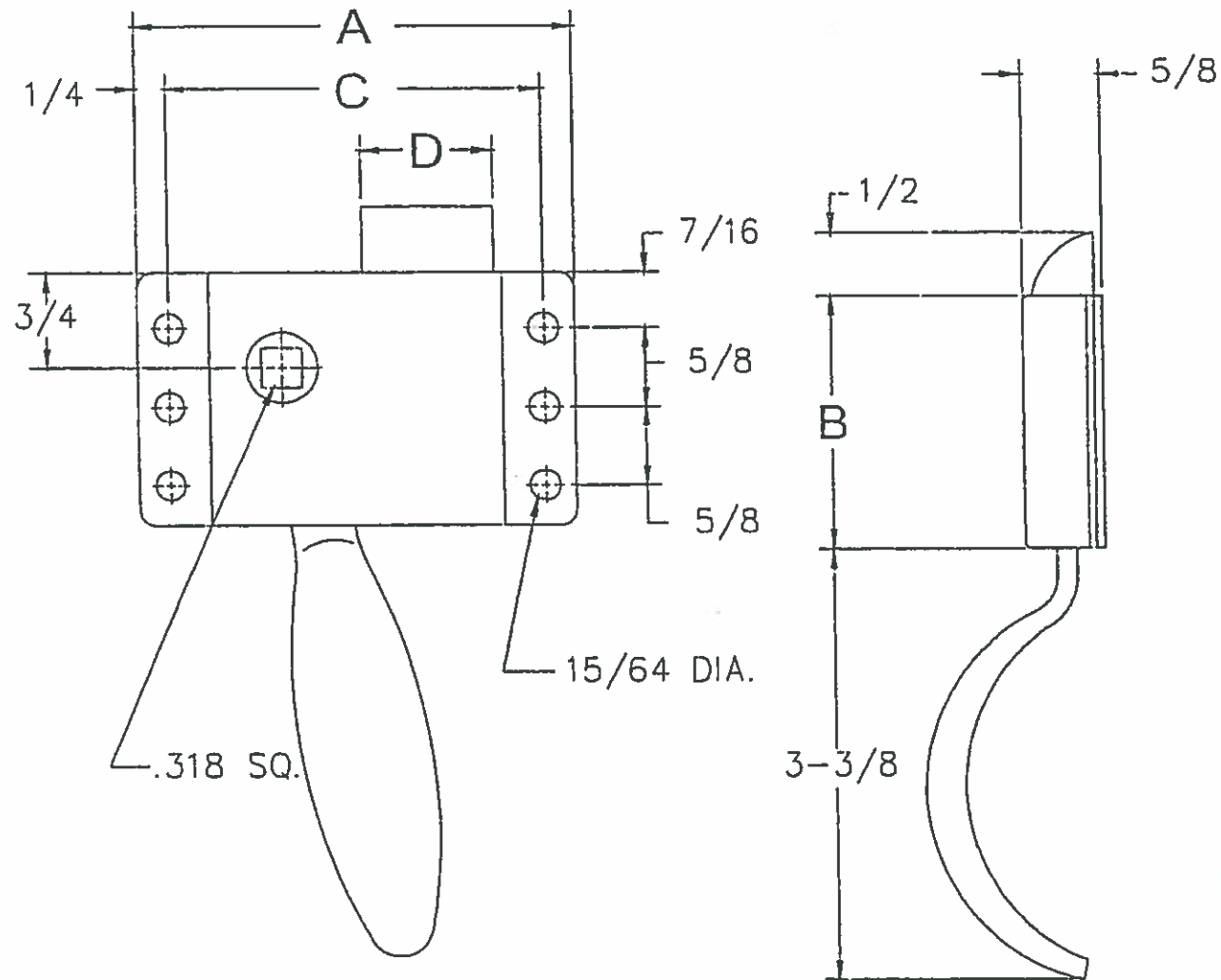
USED IN PENTA HEAD PIN WELD ASSEMBLY #: 700-00020

Prepared for H<sup>2</sup> PRECAST INC.

PIN SHAFT, PENTA HEAD PIN

SIZE A	DRAWN BY: DREW KEIM	PROGRAM NUMBER: 100-11146	REV. B
SCALE: NONE		DATE CREATED: 1/15/13	SHEET 1 of 1

CAD FILE: 100-11146

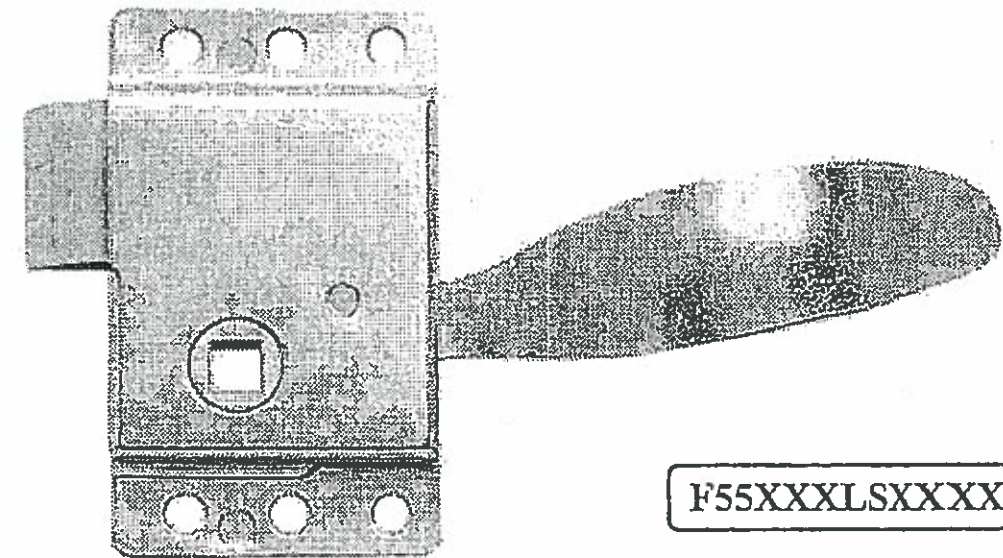


**55 CAB LOCK**

- Accepts 5/16" shank
- ✓ Available in stainless steel
- ✓ Available in steel construction/zinc finish

100-02890  
 LATCH (SLAM), aka CAB LOCK(55)  
 A.L. HANSEN #F55XXXLSXXX

Available with heavy duty case



**APPROVED**

Washington State  
 Department of Transportation  
 HQ Traffic Operations Office  
 DATE Dec 15, 2015 TAT

Copy  
 8/8/12

	A	B	C	D
55	3 3/8	2	2 7/8	1
55A	4 11/32	2 3/8	3 5/8	1 1/2

All Dimensions are in inches

ISO 9001:2000  
 QUALITY SYSTEM



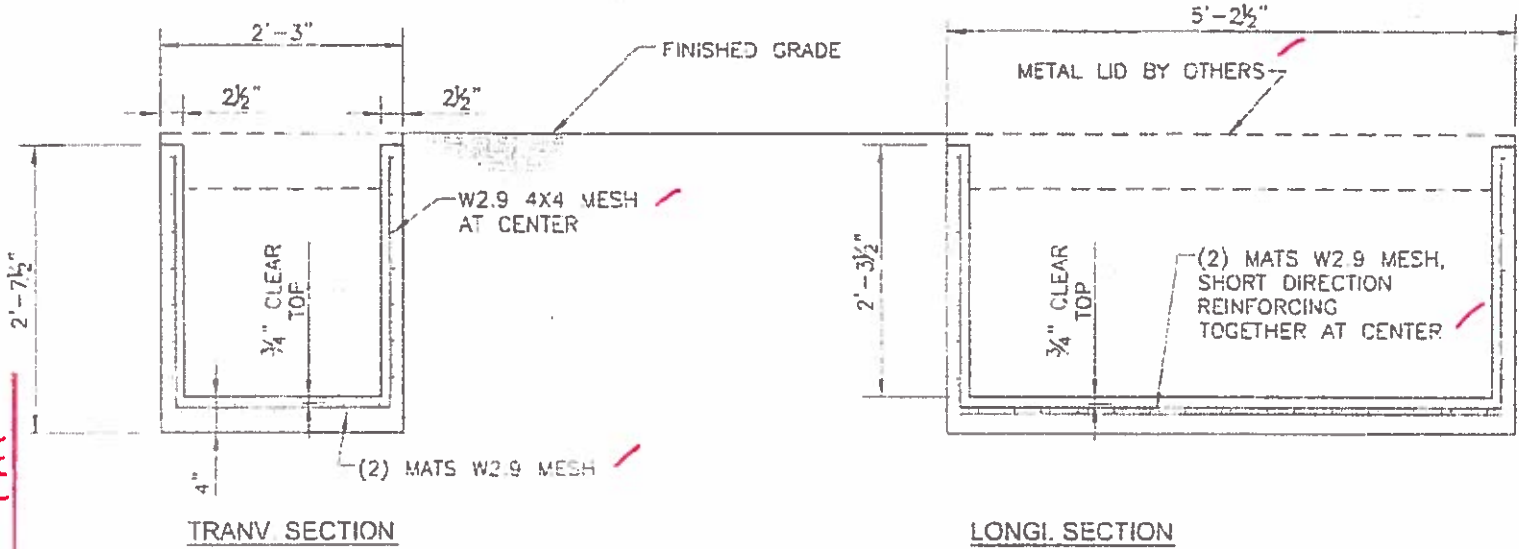
Approvals  
 Quality System Registration

701 Pershing Rd. Waukegan, Illinois 60085 U.S.A. Phone: (847)244-8900 Fax: (847)244-7222 WWW.ALHANSEN.COM

**A. L. HANSEN**  
**MANUFACTURING**



CAN BE SEPARATE P.C.S.



**APPROVED**  
 Washington State  
 Department of Transportation  
 HQ Traffic Operations Office  
 DATE Dec 15, 2015 TAT

GENERAL NOTES

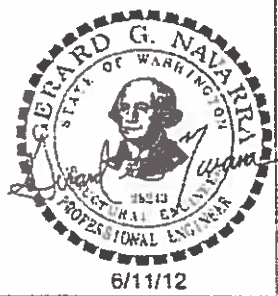
1.  $f'_c=4000$  PSI MIN AT 28 DAYS
2. REINFORCING WIRE ASTM A185, GRADE 70
3. MINIMUM REINF COVER 0.75" UNO
4. 16,000 LB WHEEL LOAD CAPACITY
5. LATERAL DESIGN EARTH PRESSURE, 35 PCF
6. BACKFILL TO BE SAND OR GRAVEL
7. 3000 PSI MINIMUM STRENGTH BEFORE STRIPPING
8. NO SPLICE EXCEPT AT LOCATIONS SHOWN

THIS DRAWING HAS BEEN PREPARED FOR YOUR REVIEW AND APPROVAL

- APPROVED AS SUBMITTED
- APPROVED AS CORRECTED
- RESUBMIT

PLEASE CHECK THE APPROPRIATE BOX AND RETURN ONE SIGNED COPY SO THAT WE MAY PROCEED WITH PRODUCTION.

SIGNED \_\_\_\_\_  
 TITLE \_\_\_\_\_ DATE \_\_\_\_\_



STATE 25-TA Drawing

DESIGN: GGN	DATE: 6/11/12	<b>25TA DOT VAULT</b>	
DRAWN: GGN			
CHECKED: CP	SCALE: 3/4"=1'-0"	STRUCT DETAIL SHEET	SHEET: 1 of 1
PROJECT NO. 12H2-2	THIS DRAWING IS INTENDED FOR THE USE OF THE INDIVIDUAL TO WHICH IT IS ADDRESSED AND CONTAINS INFORMATION THAT IS PRIVILEGED, CONFIDENTIAL AND EXEMPT FROM DISCLOSURE. IF YOU ARE NOT THE INTENDED RECIPIENT, PLEASE DO NOT DISSEMINATE, DISTRIBUTE OR COPY THIS BY E-MAIL OR OTHERWISE	 (509) 884-6644 Phone (509) 884-4567 Fax	
DWG STATUS: REVIEW			