

APPROVED
 Washington State
 Department of Transportation
 HQ Traffic Operations Office
 DATE April 18, 2016 TAT

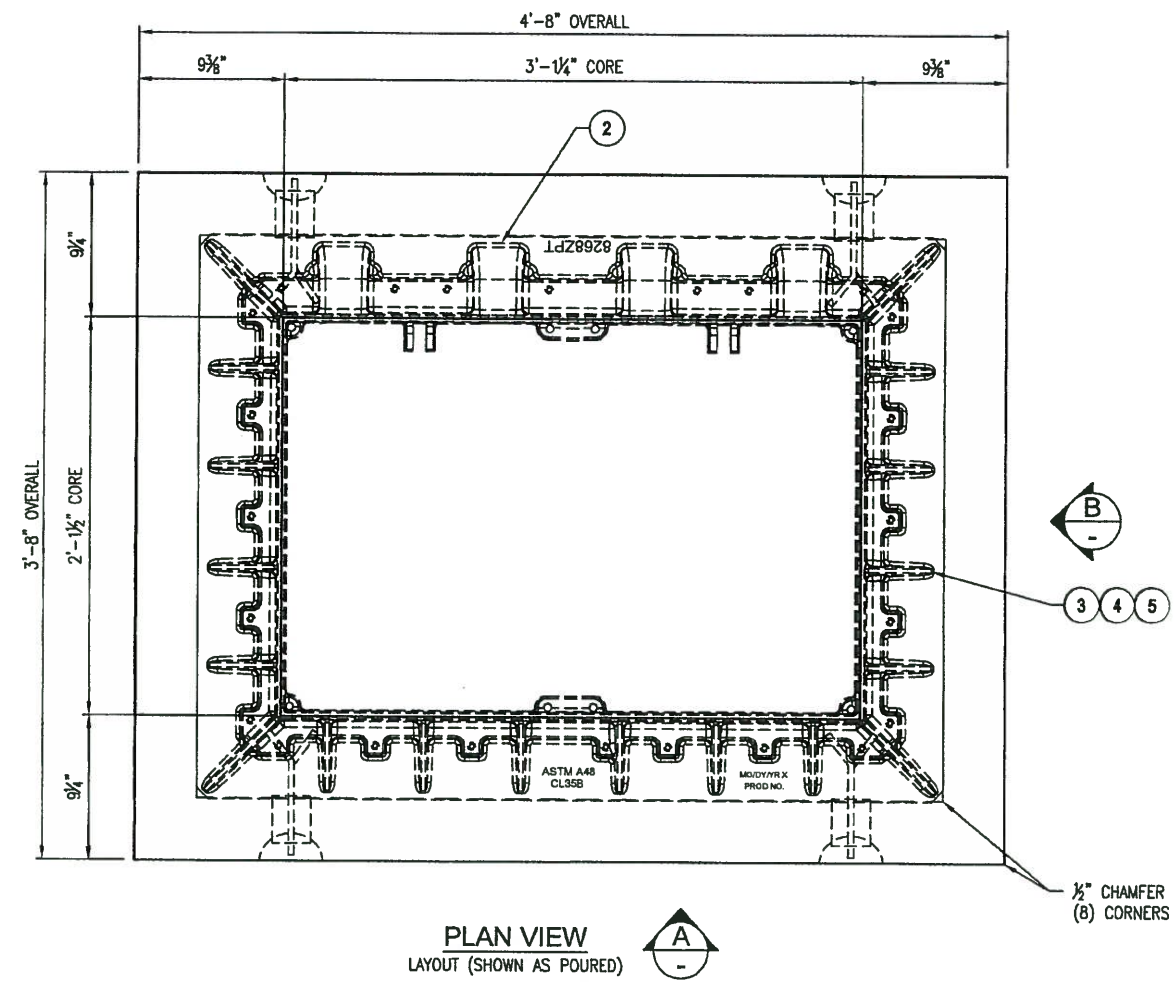
- STRUCTURAL NOTES**
1. CONCRETE: 28 DAY COMPRESSIVE STRENGTH $f'_c = 4,000$ psi
 2. REBAR: ASTM A-706 GRADE 60
 3. WWF: ASTM A-185 GRADE 65
 4. DESIGN: PER STANDARD PLAN J-40.20-02
 5. LOADS: HEAVY DUTY LOADING, 46,000 lbs

- GENERAL NOTES**
1. CUSTOMER TO:
 VERIFY ALL JUNCTION BOX FEATURES
 SUPPLY & INSTALL ALL PIPING & ELECTRICAL
 DO ALL PAINTING

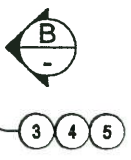
PRODUCT WEIGHT
 2,010 lbs

- SHOP NOTES**
1. USE "TYPE 6 JUNCTION BOX" STEEL FORM LESS CORE
 2. USE WOOD FORM FOR CORE BLOCKOUT
 3. USE "BRACKETING" TIED TO FORM TO LOCATE & HOLD DOWN CORE
 4. CORE FORM DIAGONAL DISTANCE: $5'-1\frac{1}{4}" \pm \frac{1}{8}"$
 5. CONCRETE FINISH: FLAT FLOAT FINISH WITH MACHINED EDGES

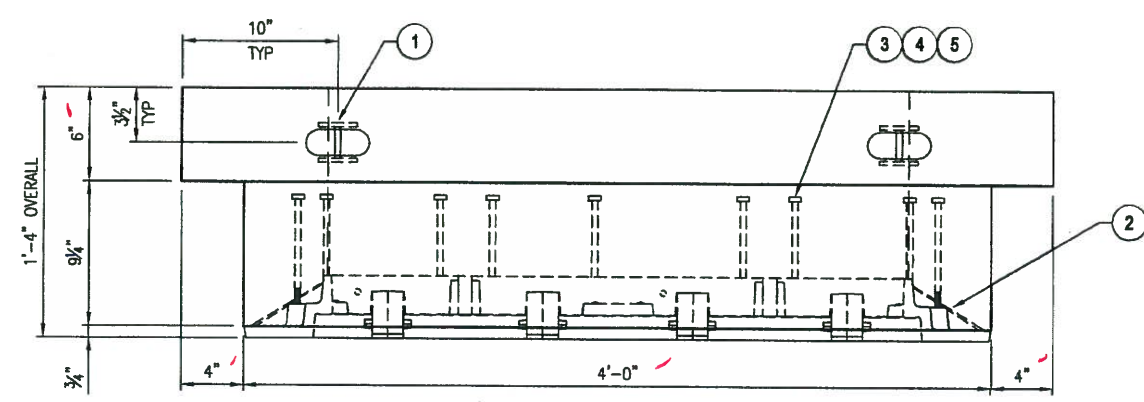
PRODUCTION QUANTITY
 (1) TYPE 6 JUNCTION BOX



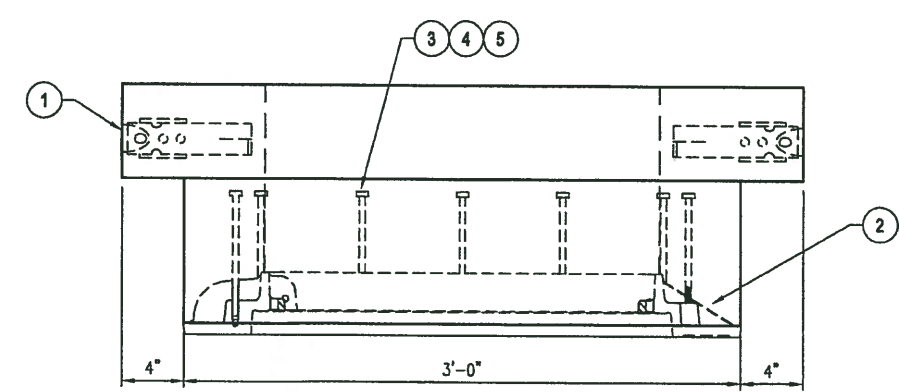
PLAN VIEW
 LAYOUT (SHOWN AS POURED)



$\frac{1}{2}$ " CHAMFER
 (8) CORNERS



VIEW A



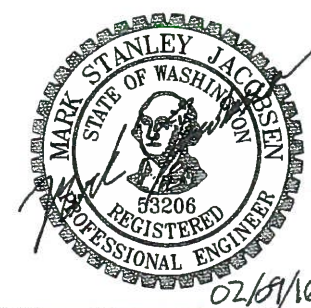
VIEW B

BILL OF MATERIALS

| # | QUANTITY | DESCRIPTION | ITEM # |
|---|-----------|---|----------|
| 1 | 4 ea | ANCHOR 2-TON ERECTION | 5100640 |
| 2 | 1 ea | EJW B26BAPT ZPT DBL DOOR ASSEMBLY | SUPPLIED |
| 3 | 24 ea | $\frac{3}{8}$ -16 x 8 1/2" F1544 GR105 ATR STUD | 5700045 |
| 4 | 24 ea | $\frac{3}{8}$ -16 GR DH HVY HEX NUT | 5700045 |
| 3 | 24 ea | $\frac{3}{8}$ -16 NC GR C HEX LOCK NUT | 5700045 |
| | 0.36 yds | CONCRETE MIX - SCC | 5010000 |
| | 0.82 bar | REBAR #4 X 40' A706/GR60 | 5510030 |
| | 0.83 bar | REBAR #5 X 40' A706/GR60 | 5510050 |
| | 21.33 sqf | MESH - 4x2 (SQ. FT) | 5500005 |
| | 35.00 ea | WOOD & STEEL FORMING CHARGE | 9300050 |

**STATE INSPECTION
 REQUIRED**

ENGINEER'S SEAL:
 SHOP DRAWINGS REVIEWED FOR
 GENERAL CONFORMANCE TO THE INTENT
 OF THE WSDOT STANDARD PLAN
 J-40.20-02



Oldcastle Precast
 P.O. BOX 680 AUBURN, WA 98071-0680
 PHONE: 800-882-1838 FAX: 253-735-4201

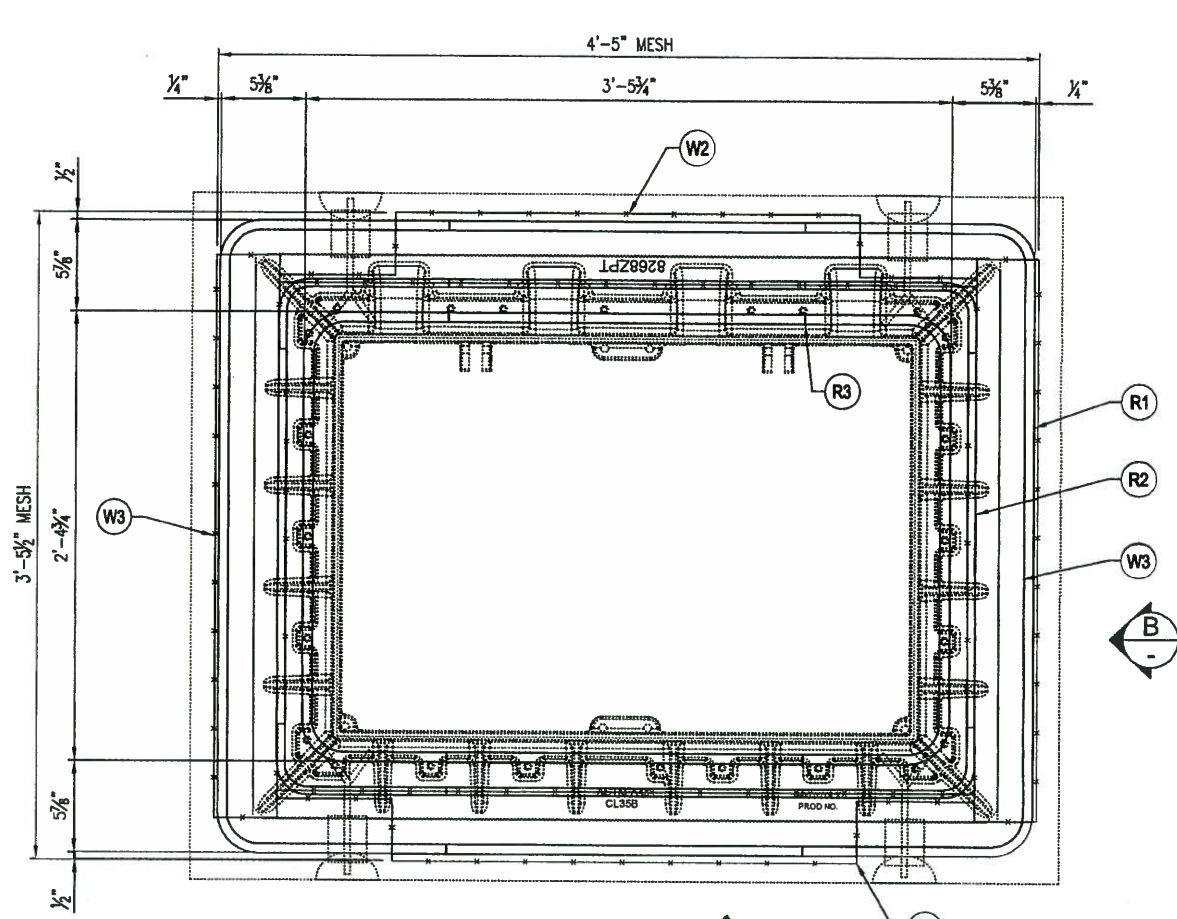
THIS DOCUMENT IS THE PROPERTY OF OLDCASTLE PRECAST, INC. IT IS CONFIDENTIAL, SUBMITTED FOR REFERENCE PURPOSES ONLY, AND SHALL NOT BE USED IN ANY WAY INJURIOUS TO THE INTERESTS OF OLDCASTLE PRECAST, INC. WITHOUT THE WRITTEN PERMISSION OF OLDCASTLE PRECAST, INC. COPYRIGHT © 2015 OLDCASTLE PRECAST, INC. ALL RIGHTS RESERVED.

TYPE 6 HEAVY DUTY JUNCTION BOX
 LAYOUT DESIGN
 OLDCASTLE TYPE 6 HH TESTING
 AUBURN, WA

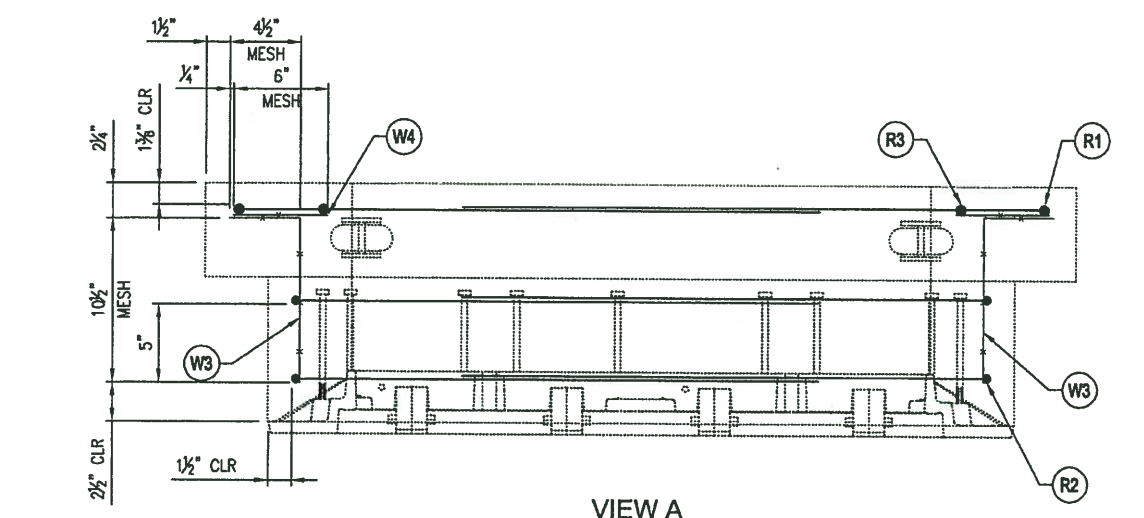
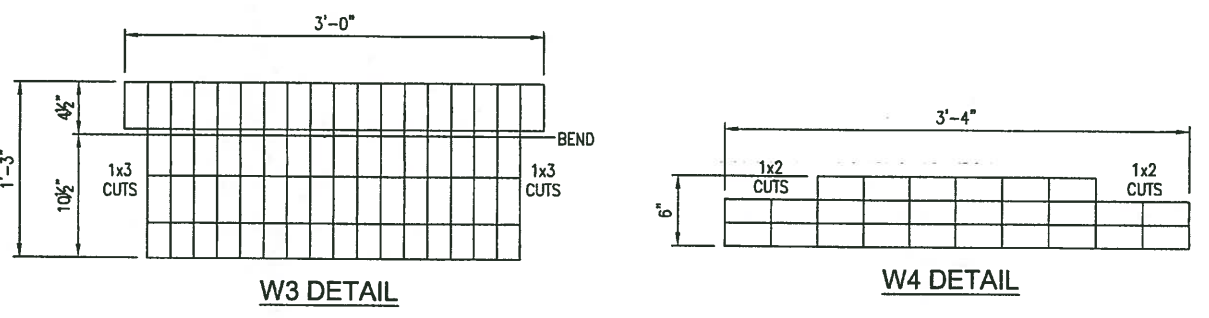
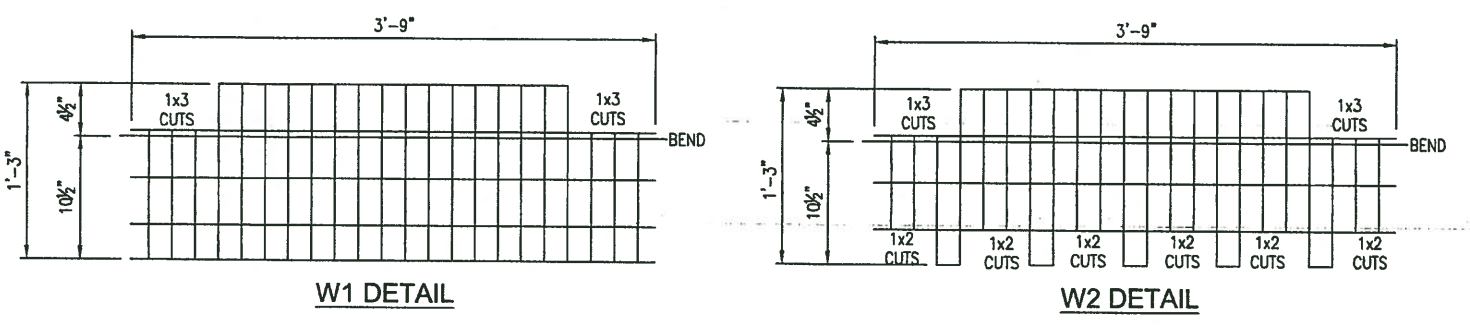
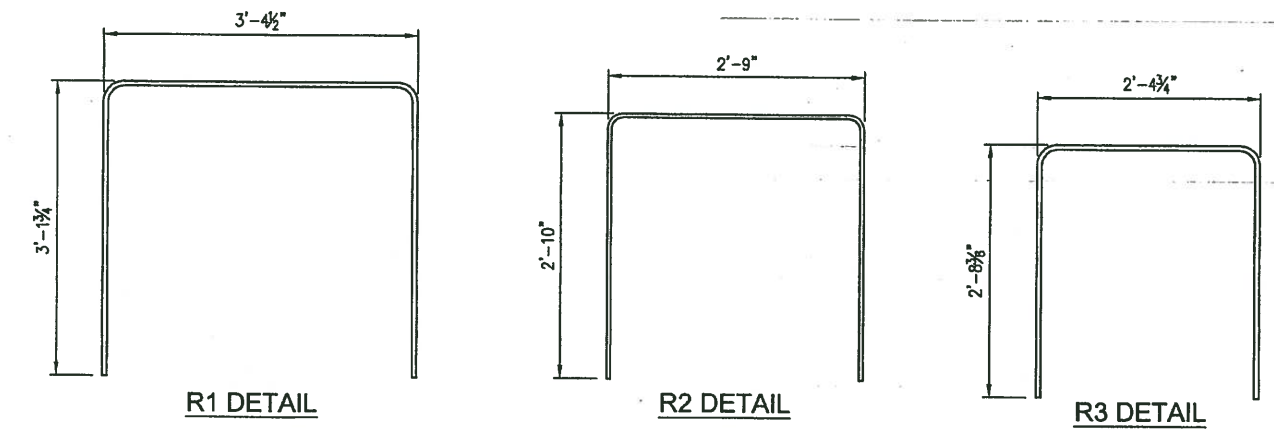
CUSTOMER
OLDCASTLE PRECAST - AUBURN

| | | | | | |
|-----------------|-------|-------|----------|---------|-------------|
| DATE | SALES | DRAWN | ENGINEER | CHECKED | SALES ORDER |
| 12/17/15 | JC | CAS | | | S131633 |
| DRAWING NUMBER | | | | | SHEET |
| 010-S131633-002 | | | | | 1 OF 2 |
| REV DATE | | | | | |

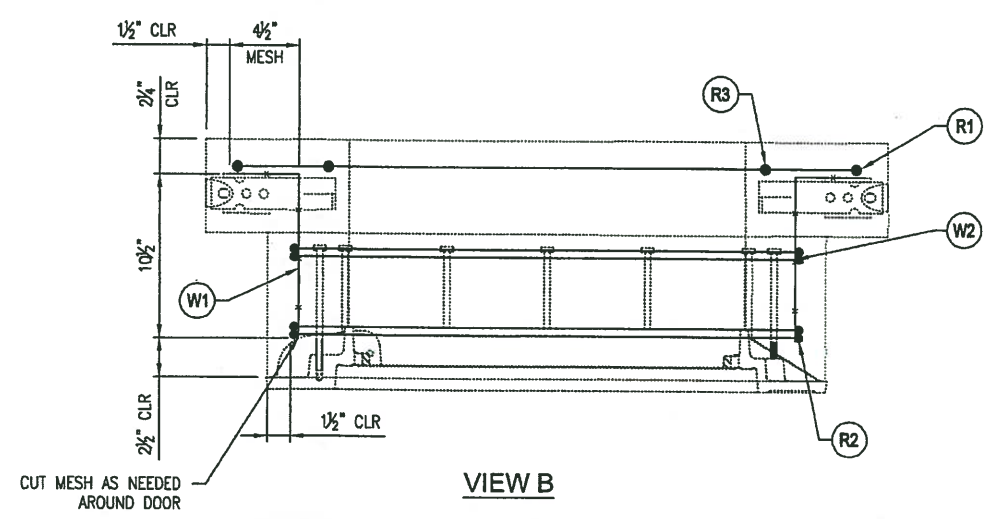
| REVISION | DESCRIPTION | BY |
|----------|-------------|----|
| | | |



PLAN VIEW
REINFORCEMENT (SHOWN AS POURED)



VIEW A



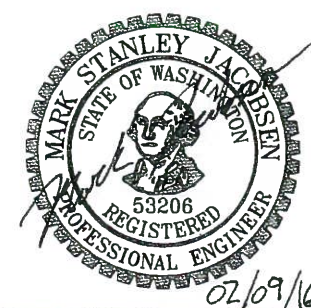
VIEW B

APPROVED
 Washington State
 Department of Transportation
 HQ Traffic Operations Office
 DATE: April 18, 2016 TMT

| REINFORCEMENT CUT LIST | | | | |
|------------------------|-----|------------------------|---------|-------|
| # | QTY | MATERIAL | LENGTH | SHAPE |
| R1 | 2 | #5 REBAR A706/GR60 | 9'-4.5" | BENT |
| R2 | 4 | #4 REBAR A706/GR60 | 8'-2" | BENT |
| R3 | 2 | #5 REBAR A706/GR60 | 7'-6" | BENT |
| W1 | 1 | MESH 4X2 - W2.9 X W2.9 | | BENT |
| W2 | 1 | MESH 4X2 - W2.9 X W2.9 | | BENT |
| W3 | 2 | MESH 4X2 - W2.9 X W2.9 | | BENT |
| W4 | 2 | MESH 4X2 - W2.9 X W2.9 | | STR |

**STATE INSPECTION
REQUIRED**

ENGINEER'S SEAL:
 SHOP DRAWINGS REVIEWED FOR
 GENERAL COMPLIANCE TO THE INTENT
 OF THE WSDOT STANDARD PLANS
 J-40.20-02



Oldcastle Precast
 P.O. BOX 688 AUBURN, WA 98711-0688
 PHONE: 509-882-1838 FAX: 509-726-4201

THIS DOCUMENT IS THE PROPERTY OF OLDCASTLE PRECAST, INC. IT IS CONFIDENTIAL, SUBMITTED FOR REFERENCE PURPOSES ONLY, AND SHALL NOT BE USED IN ANY WAY INJURIOUS TO THE INTERESTS OF, OR WITHOUT THE WRITTEN PERMISSION OF OLDCASTLE PRECAST, INC. COPYRIGHT © 2016 OLDCASTLE PRECAST, INC. ALL RIGHTS RESERVED.

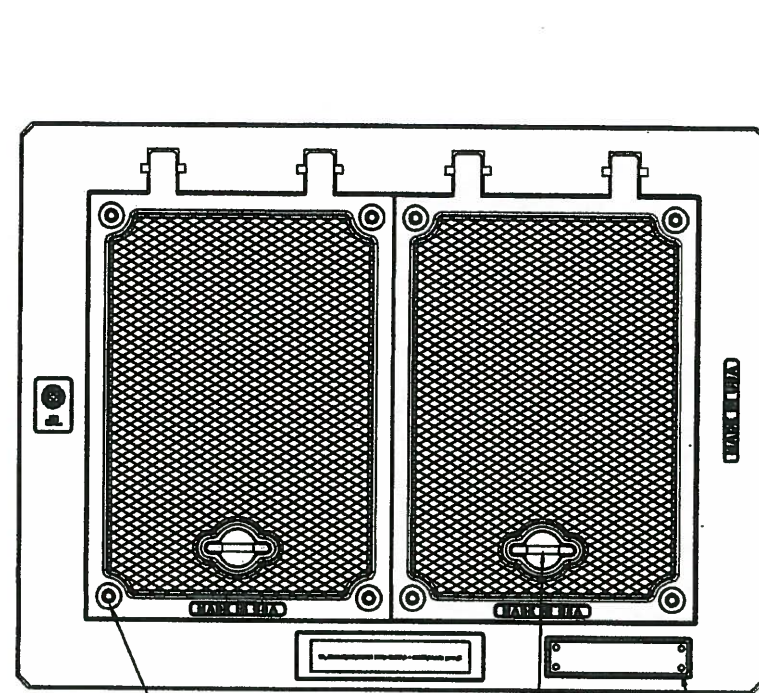
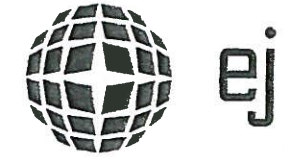
TYPE 6 HEAVY DUTY JUNCTION BOX
 REINFORCEMENT DESIGN
 OLDCASTLE TYPE 6 HH TESTING
 AUBURN, WA

CUSTOMER
OLDCASTLE PRECAST - AUBURN

| | | | | | |
|-----------------|-------|-------|----------|---------|-------------|
| DATE | SALES | DRAWN | ENGINEER | CHECKED | SALES ORDER |
| 12/17/15 | JC | CAS | | | S131633 |
| DRAWING NUMBER | | | | | REVISION |
| 010-S131633-002 | | | | | BRETT |
| | | | | | REV DATE |
| | | | | | 2 OF 2 |

| REVISION | DESCRIPTION | BY |
|----------|-------------|----|
| | | |

8268ZPT 8268APT Assembly

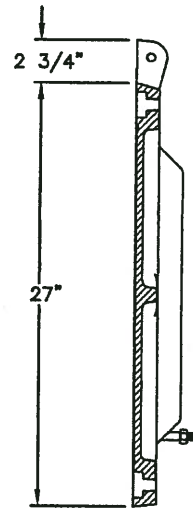


CHAMFERED CORNER
(4 PLCS.)

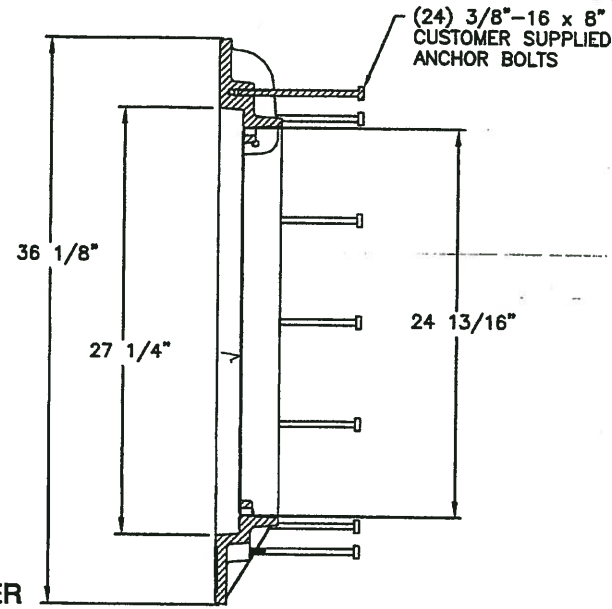
(8) 1/2-13 X 1 3/4" PENT
HD. S.S. BOLTS WITH
(8) 1/2" ID 1 1/4" OD
STAINLESS STEEL WASHERS

DROP HANDLE

CUSTOMER NAME PLATE
1/4"-20 DRILL AND TAP 1/2" DP
ON DRILL DIMPLES (4 PLCS.)



SECTION OF COVER



SECTION OF FRAME

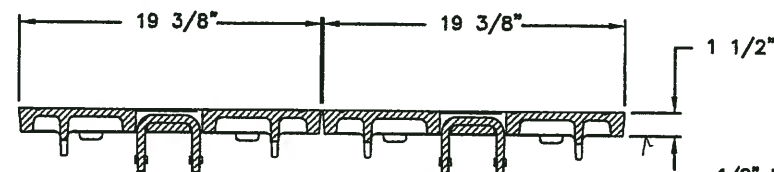
(24) 3/8"-16 x 8"
CUSTOMER SUPPLIED
ANCHOR BOLTS

Product Number
00826821B01

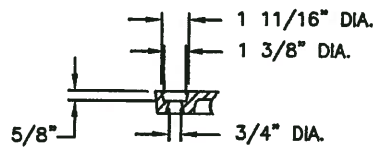
Design Features

- Materials
- Frame
Gray Iron (CL35B)
- Cover
Ductile-Iron (80-55-06)

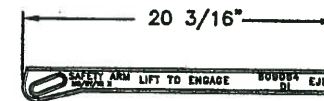
- Design Load
Heavy Duty
- Open Area
n/a
- Coating
Undipped
- √Designates Machined Surface



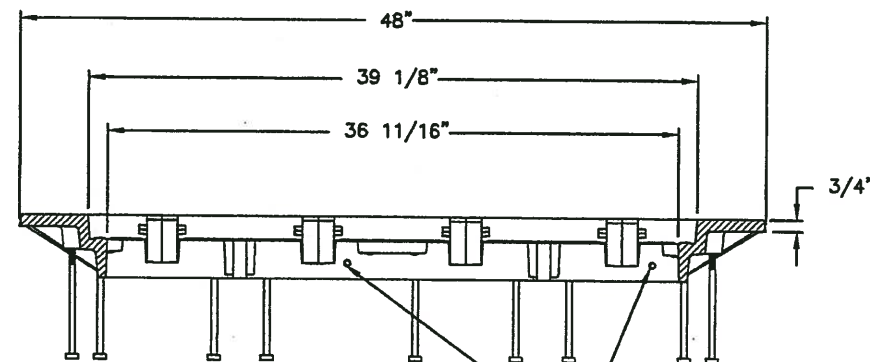
SECTION OF COVERS



BOLTHOLE DETAIL



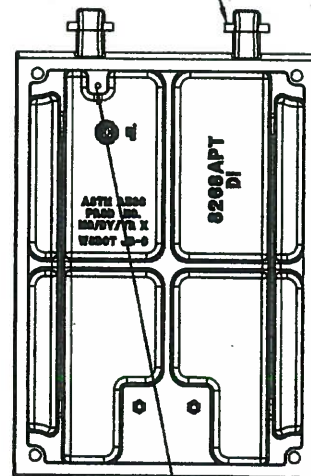
SAFETY BAR DETAIL



5/16"-18 DRILL AND TAP THRU
FOR CUSTOMER SUPPLIED BOLT

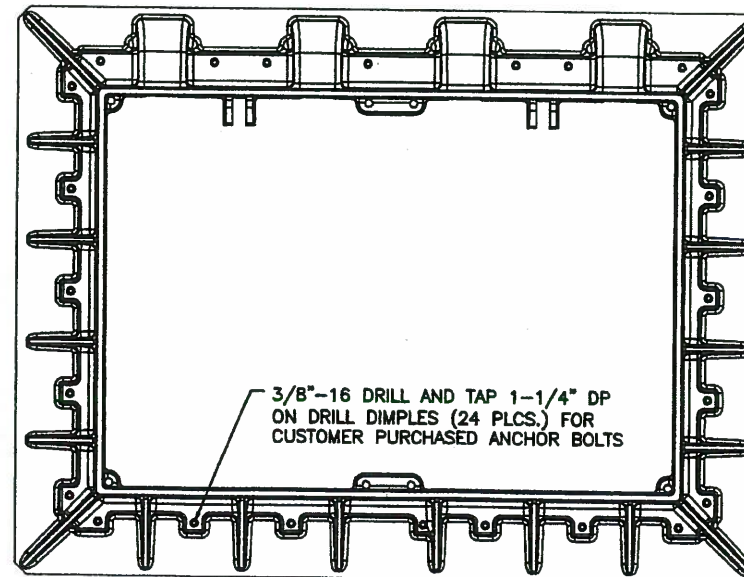
SECTION OF FRAME

1/2" DIA. x 2-7/8" SS HINGE
PIN (2 PLCS.) (CAST IN PLACE)



5/16"-18 DRILL AND TAP 1" DP
FOR CUSTOMER SUPPLIED BOLT

BOTTOM VIEW OF COVER



3/8"-16 DRILL AND TAP 1-1/4" DP
ON DRILL DIMPLES (24 PLCS.) FOR
CUSTOMER PURCHASED ANCHOR BOLTS

BOTTOM VIEW OF FRAME

Certification

- ASTM A48
- ASTM A536
- Country of Origin: USA

Major Components

00826811
(2) 00826821

Drawing Revision

6/26/2013 Designer: DEF
8/3/2015 Revised By: DEF

Disclaimer

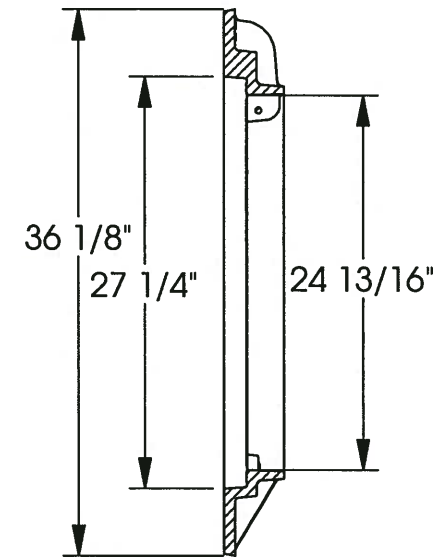
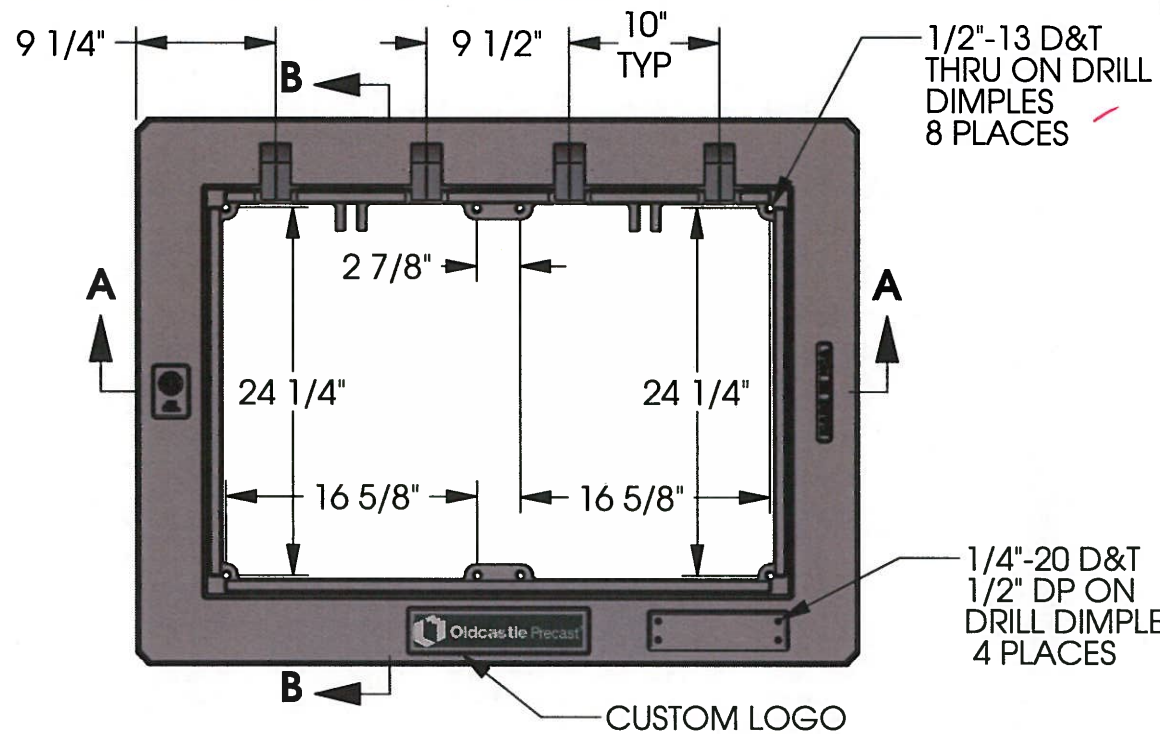
Weights (lbs./kg) dimensions (inches/mm) and drawings provided for your guidance. We reserve the right to modify specifications without prior notice.

CONFIDENTIAL: This drawing is the property of EJ GROUP, Inc., and embodies confidential information registered marks, patents, trade secret information, and/or know how that is the property of EJ GROUP, Inc. Copyright © 2012 EJ GROUP, Inc. All rights reserved.

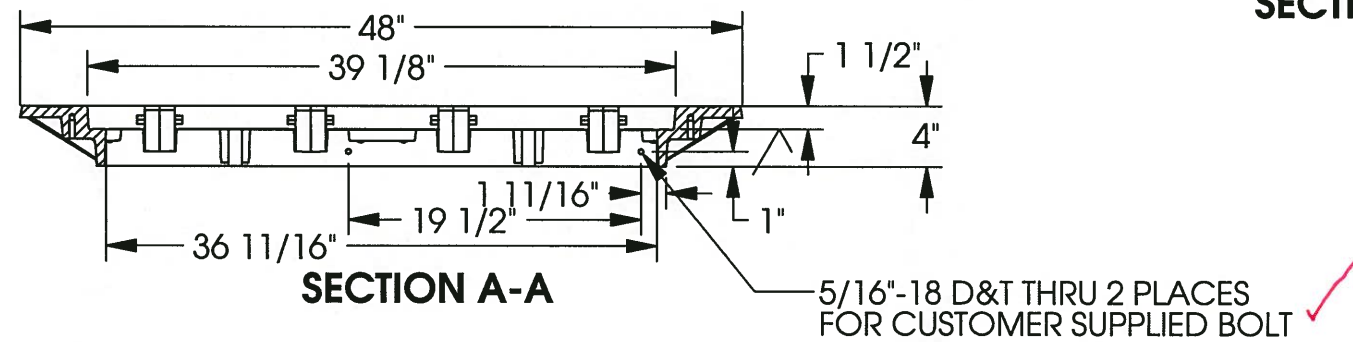
Contact
800 626 4653
ejco.com

APPROVED
 Washington State
 Department of Transportation
 HQ Traffic Operations Office
 DATE: April 18, 2016 TAT

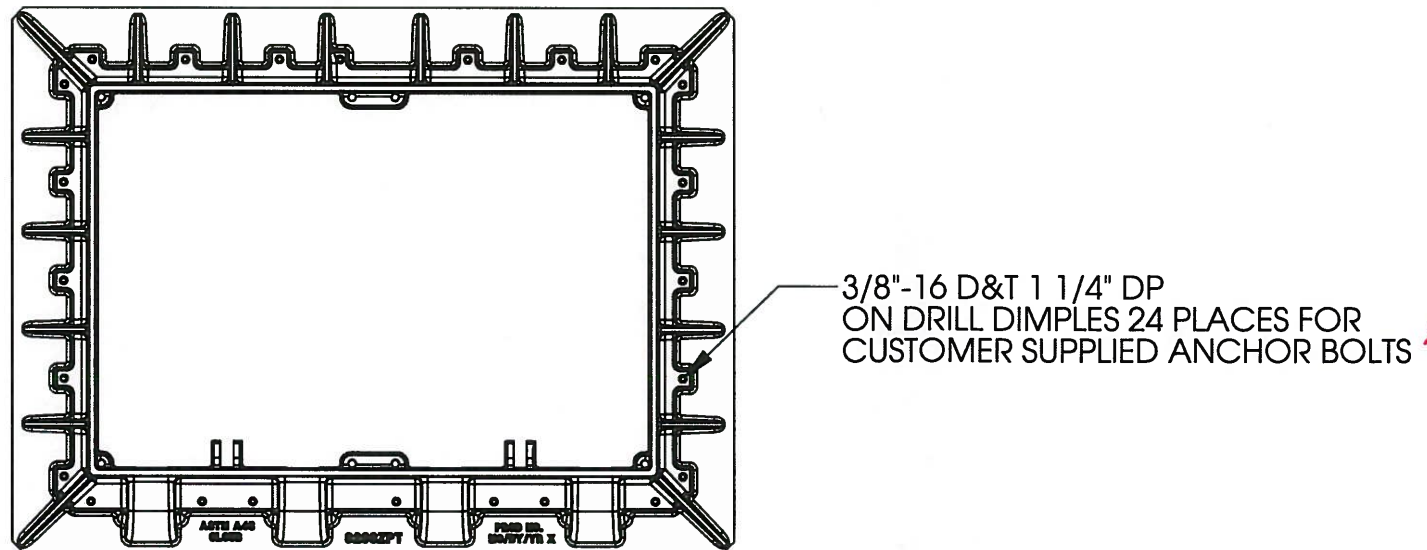
8268ZPT Hatch Frame



SECTION B-B



SECTION A-A



BOTTOM VIEW

Product Number
00826811

Design Features

- Materials
Gray Iron (CL35B)
- Design Load
Heavy Duty
- Open Area
n/a
- Coating
Undipped
- √ Designates Machined Surface

Certification

- ASTM A48
-
-
- Country of Origin: USA

Drawing Revision

11/18/2013 Designer: DEF
Revised By:

Disclaimer

Weights (lbs/kg), dimensions (inches/mm) and drawings provided for your guidance. We reserve the right to modify specifications without prior notice.

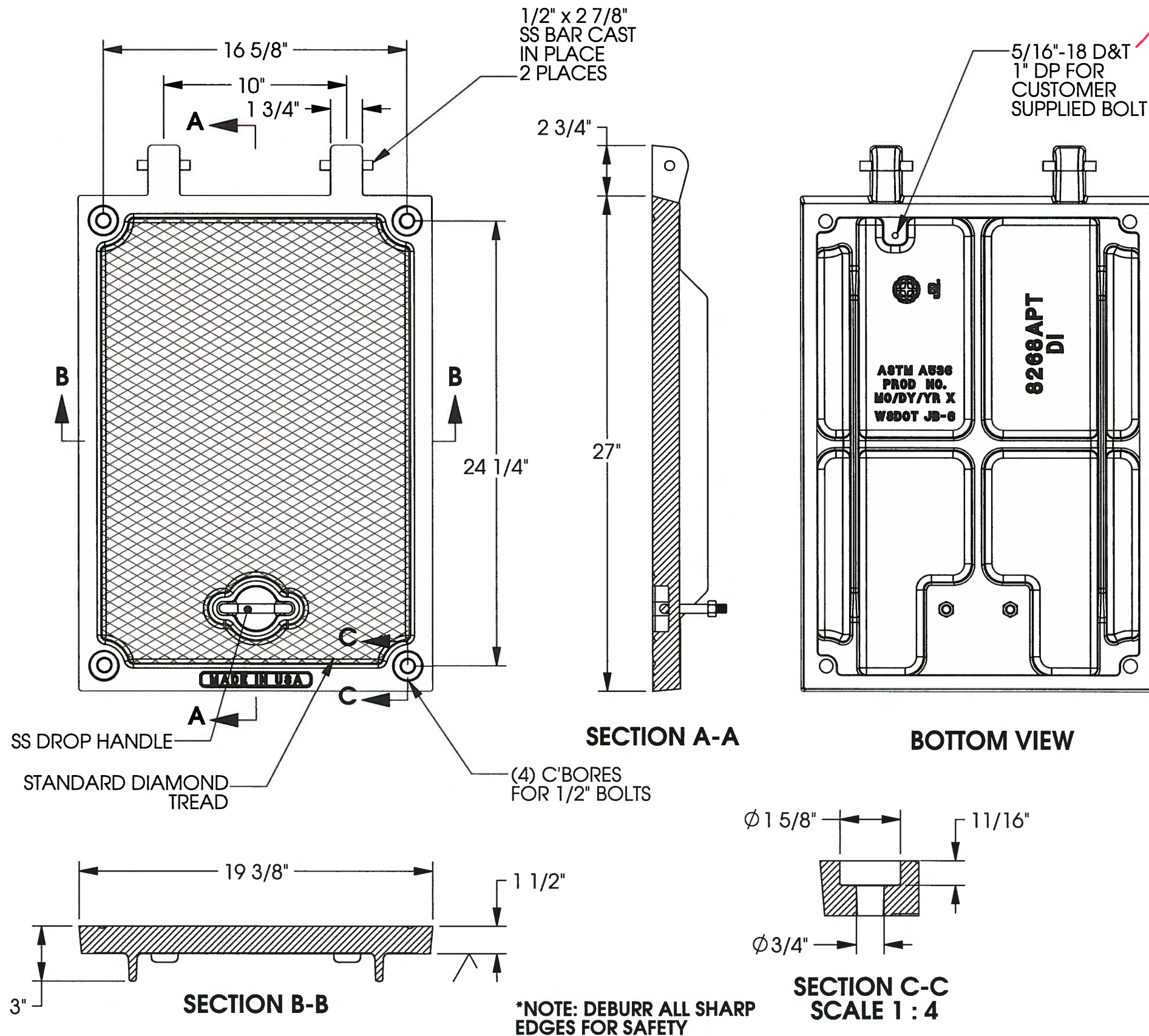
CONFIDENTIAL: This drawing is the property of EJ Group, Inc. and embodies confidential information, registered marks, patents, trade secret information, and/or know how that is the property of EJ Group, Inc. Copyright © 2013 EJ Group, Inc. All rights reserved.

Contact

800 626 4653
ejco.com

APPROVED
 Washington State
 Department of Transportation
 HQ Traffic Operations Office
 DATE: April 18, 2016 TAT

8268APT Hatch Cover



Product Number
00826821

Design Features

- Materials
Ductile Iron (80-55-06)
- Design Load
Heavy Duty
- Open Area
n/a
- Coating
Undipped
- √ Designates Machined Surface

Certification

- ASTM A536
-
- Country of Origin: USA

Drawing Revision

11/18/2013 Designer: DEF
08/03/2015 Revised By: DEF

Disclaimer

Weights (lbs/kg), dimensions (inches/mm) and drawings provided for your guidance. We reserve the right to modify specifications without prior notice.

CONFIDENTIAL: This drawing is the property of EJ Group, Inc. and embodies confidential information, registered marks, patents, trade secret information, and/or know how that is the property of EJ Group, Inc. Copyright © 2013 EJ Group, Inc. All rights reserved.

Contact

800 626 4653
ejco.com

APPROVED
 Washington State
 Department of Transportation
 HQ Traffic Operations Office
 DATE: April 18, 2016
 TPT