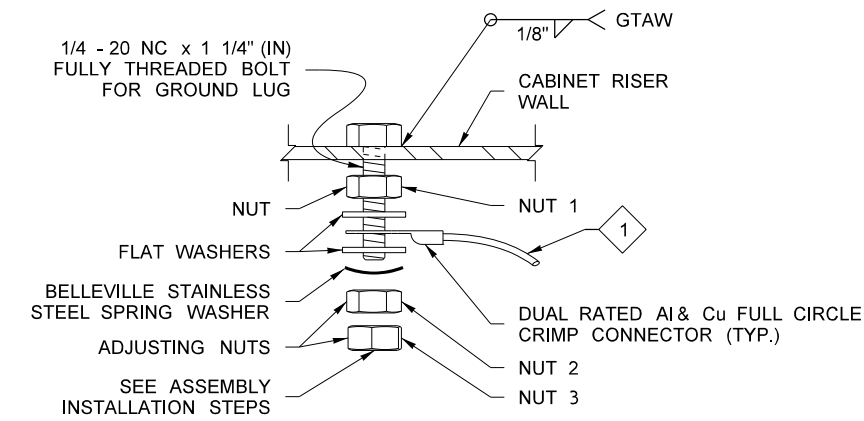
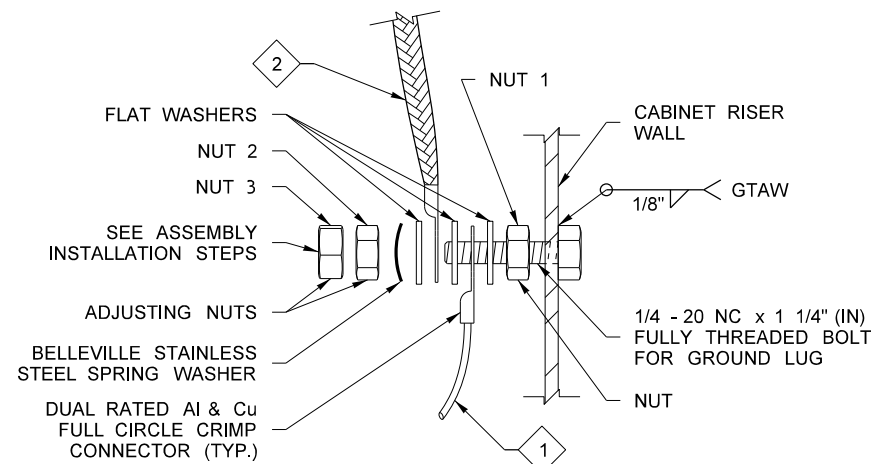


P44 RISER ADAPTOR BASE



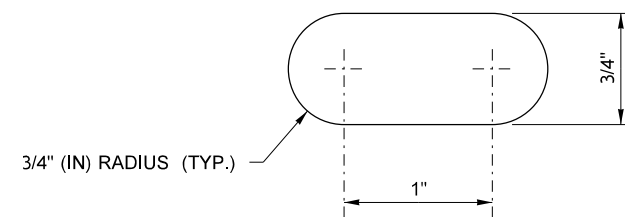
SINGLE BONDING JUMPER CONNECTION DETAIL **



DOUBLE BONDING JUMPER CONNECTION DETAIL **

ASSEMBLY INSTALLATION STEPS

- ① LIBERALLY COAT THREADS WITH ANTI-OXIDANT COMPOUND
- ② SNUG NUT 1 AGAINST BACK WALL
- ③ INSTALL FLAT WASHERS AND FULL CIRCLE CRIMP CONNECTOR(S)
- ④ WITH WRENCH ON NUT 1 AND NUT 2, SNUG NUT 2 TO NUT 1 ~ TIGHTEN UNTIL THE BELLEVILLE SPRING WASHER IS FULLY COMPRESSED AND NO FURTHER
- ⑤ WITH WRENCH ON NUT 2 AND NUT 3, SNUG NUT 3 TO NUT 2
- ⑥ LIBERALLY COAT THIS ASSEMBLY WITH ANTI-OXIDANT COMPOUND



BOLT HOLE SLOT DETAIL

GENERAL NOTES

1. FIELD VERIFY CONTROLLER CABINET BOLT PATTERN AND LOCATION PRIOR TO FABRICATION.
2. GROOVE SIZE AND FILLET SIZE ARE EQUAL TO MATERIAL THICKNESS.
3. ALL HARDWARE SHALL BE STAINLESS STEEL.
4. ALL WELDING SHALL BE GTAW.
5. EQUIPMENT BONDING JUMPER SHALL BE #8 AWG (MIN.) x 1' (FT) OF TINNED, BRAIDED COPPER.
6. PLACE A 1/2" (IN) BEAD OF SILICONE BETWEEN CABINET RISER AND FOUNDATION, PLACE A 1/2" (IN) BEAD OF SILICONE BETWEEN CABINET RISER AND CABINET.

MATERIAL: 1/8" (IN) SHEET ALUMINUM (5052-H32), MINIMUM THICKNESS. EXTRUDED CHANNEL OR FORMED CHANNEL MAY BE SUBSTITUTED FOR WELDED PLATE.

① MAINTAIN SURFACE FLATNESS OF +/- 0.05 AT MATING SURFACE.

KEY NOTES

- ① EQUIPMENT BONDING JUMPER
- ② EQUIPMENT BONDING JUMPER (SEE NOTE 5)
- ③ SINGLE BONDING JUMPER CONNECTION ~ SEE SINGLE BONDING JUMPER CONNECTION DETAIL
- ④ DOUBLE BONDING JUMPER CONNECTION ~ SEE DOUBLE BONDING JUMPER CONNECTION DETAIL

**** BOLTS, NUTS, AND WASHERS ~**
ASTM F593 OR A193
TYPE 304 OR TYPE 316
STAINLESS STEEL (S.S.)

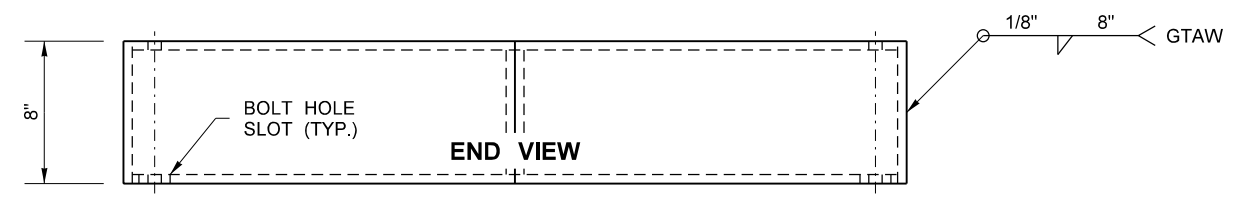
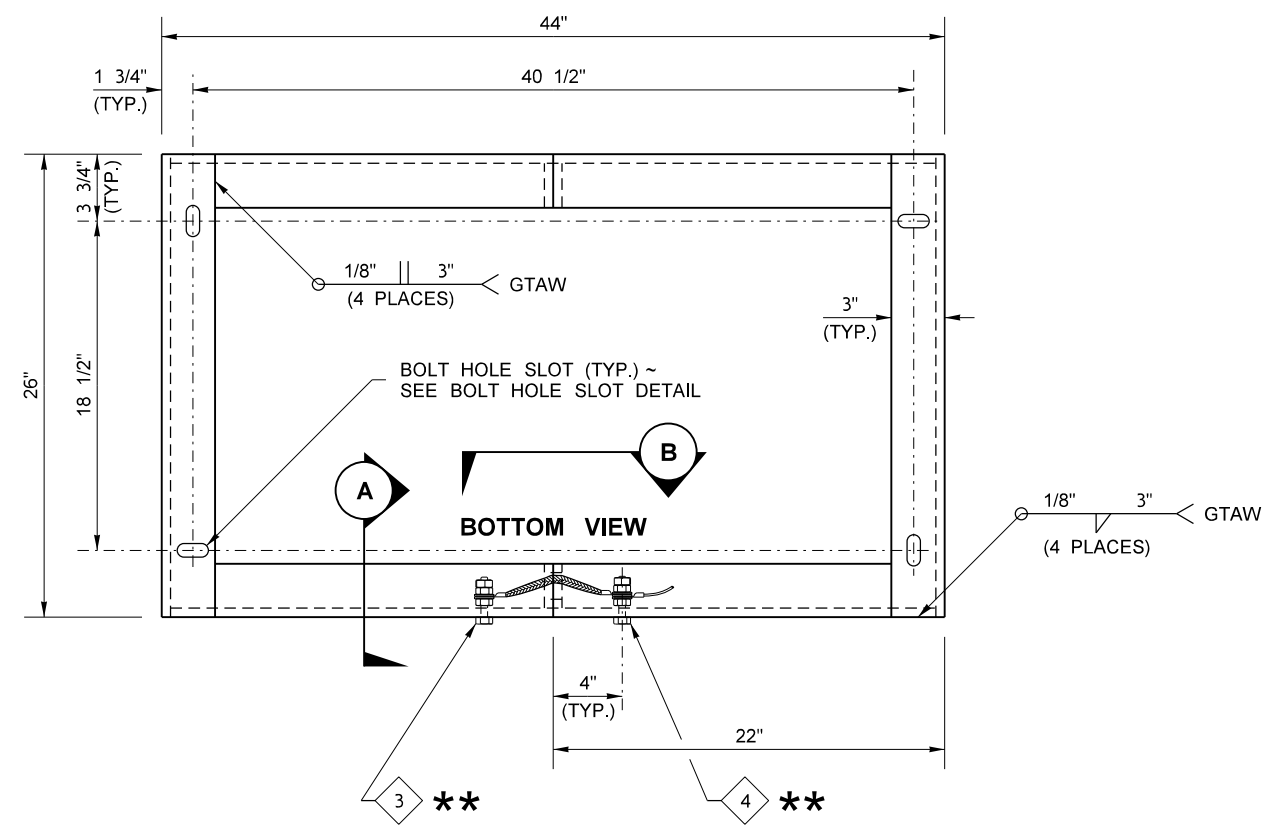
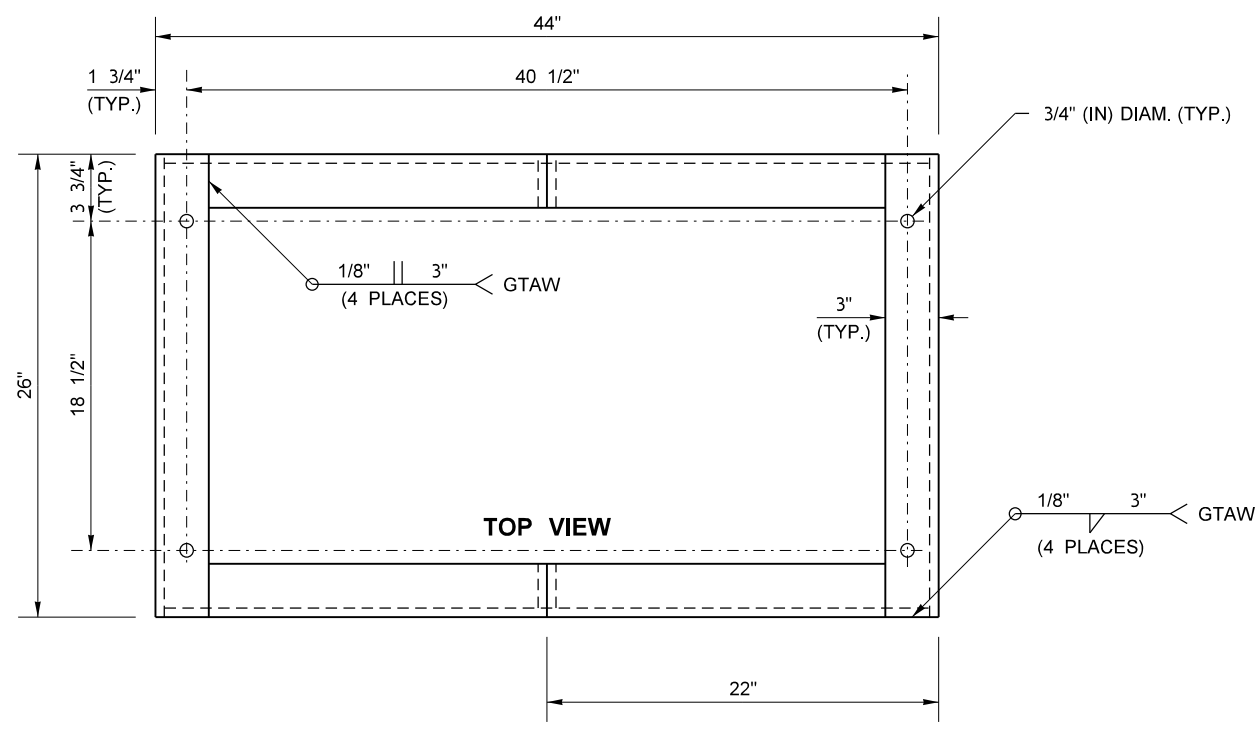
**** AA = ALUMINUM ALLOY**
BOLT - AA2024-T4 OR AA 2024-T351
NUT - AA6061-T6
WASHER - AA7075-T6

TOLERANCES

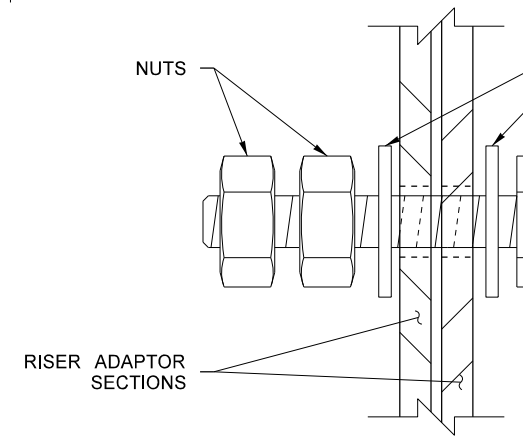
ANGLE +/- 1 DEGREE
X.XX +/- 1/8
HOLES + 0.062 / -0.015

GTAW = GAS TUNGSTEN ARC WELDING

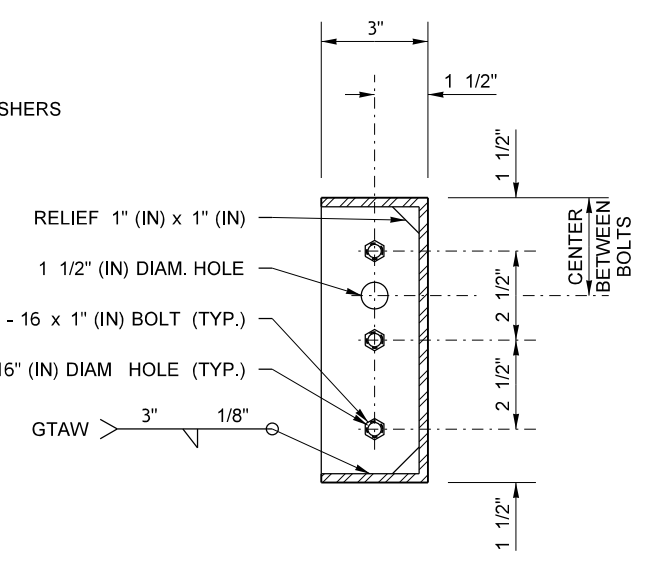
FILE NAME	S:\Design R P& S\4-Standards\2-Plan Sheet Library Working folder\06-Illum & Signal (IS)\W(IS-19) P44 Controller Cabiner Riser Details\IS-19.dgn				REGION NO.	STATE	FED.AID PROJ.NO.	Washington State Department of Transportation	Plot 1
TIME	1:24:06 PM				WASH				PLAN REF NO IS-19
DATE	8/4/2014				JOB NUMBER			SHEET 1 OF 2 SHEETS	
PLOTTED BY	FletcCo				CONTRACT NO.	LOCATION NO.			
DESIGNED BY									
ENTERED BY								P44 CONTROLLER CABINET RISER DETAILS	
CHECKED BY									
PROJ. ENGR.									
REGIONAL ADM.	REVISION	DATE	BY						



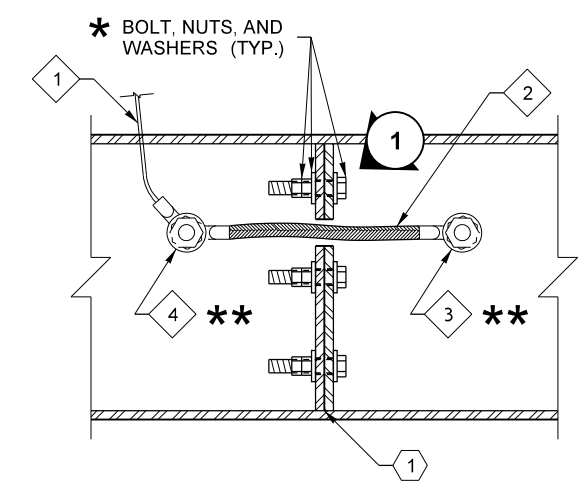
P44 RISER ADAPTOR SPLIT BASE



DETAIL 1
(EXPLODED VIEW)



SECTION A



SECTION B

FILE NAME S:\Design R P& S\4-Standards\2-Plan Sheet Library Working folder\06-Illum & Signal (IS)\W(IS-19) P44 Controller Cabiner Riser Details\IS-19.dgn		REGION NO.		STATE	FED.AID PROJ.NO.	Washington State Department of Transportation	Plot 2 PLAN REF NO IS-19
TIME 1:24:19 PM	DATE 8/4/2014	WASH					
PLOTTED BY FletcCo	DESIGNED BY	JOB NUMBER		CONTRACT NO.	LOCATION NO.	P44 CONTROLLER CABINET RISER DETAILS	
ENTERED BY	CHECKED BY	CONTRACT NO.		DATE	DATE		
PROJ. ENGR.	REGIONAL ADM.	REVISION	DATE	BY	P.E. STAMP BOX		