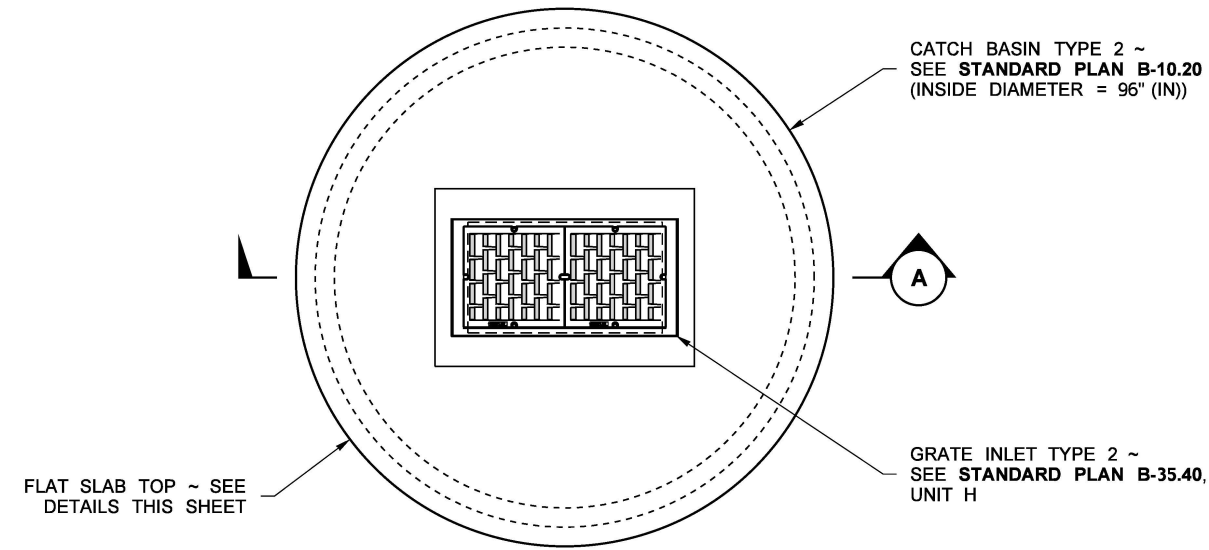
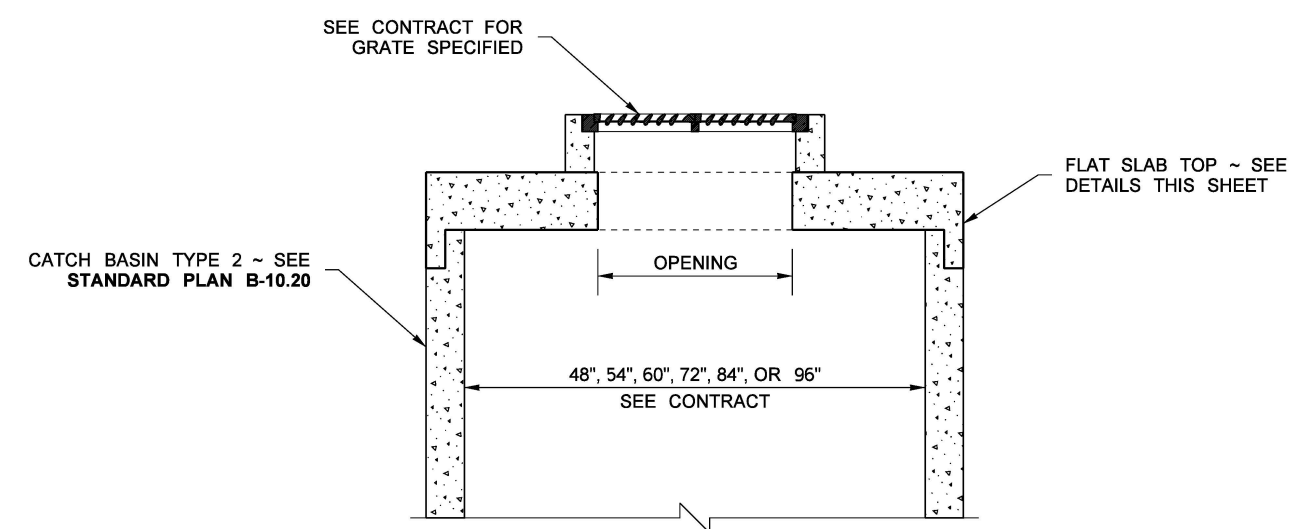


(96" (IN) DIAMETER FLAT SLAB SHOWN)  
FLAT SLAB TOP DETAIL



PLAN



SECTION A

**NOTES**

1. REINFORCEMENT SHALL MEET THE REQUIREMENTS OF AASHTO M 199 AND IS SHOWN FOR INFORMATIONAL PURPOSES ONLY.
2. SEE STANDARD SPECIFICATION SECTION 9-07.1(2) FOR BENDING DIAMETERS.
3. SEE STANDARD PLANS B-40.20 AND B-40.40 FOR GRATE DETAILS.

**DESIGNER NOTE: NOT INTENDED FOR INCLUSION IN THE CONTRACT DOCUMENTS (LEVEL 22).**

DUE TO THIS ITEM BEING A HYBRID OF DIFFERENT PRECAST UNITS, FRAME AND GRATE, A SPECIAL PROVISION IS REQUIRED. DESCRIPTION SHOULD INCLUDE THE DIAMETER OF THE CATCH BASIN, MEASUREMENT AND PAYMENT SHALL BE PER EACH.

FILE NAME S:\Design R P& S\4-Standards\2-Plan Sheet Library\02-PSL Work in Progress\BI\IDS-2\DS-2.dgn		REGION NO.		STATE	FED.AID PROJ.NO.		 Washington State Department of Transportation	Plot 1
TIME	2:34:22 PM	WASH				PLAN REF NO		
DATE	10/10/2016	JOB NUMBER					DS-2	
PLOTTED BY	berensb	CONTRACT NO.			LOCATION NO.		SHEET	
DESIGNED BY							1	
ENTERED BY							OF	
CHECKED BY							1	
PROJ. ENGR.							SHEETS	
REGIONAL ADM.		REVISION	DATE	BY			GRATE INLET ON CATCH BASIN - TYPE 2	
				DATE		DATE		
				P.E. STAMP BOX		P.E. STAMP BOX		