

SR 167 Master Plan

A planning and environmental linkage study

Equity Advisory Committee Meeting #4
September 23, 2022

JULIE MEREDITH, PE
HENRY YATES
APRIL DELCHAMPS, AICP
CHRIS BREILAND, PE
LOREANA MARCIANTE, PMP
LAURA LLOYD
AMY DANBERG

ASSISTANT SECRETARY URBAN MOBILITY, ACCESS AND MEGAPROGRAMS
SR 167 MASTER PLAN EQUITY ADVISORY COMMITTEE FACILITATOR
PLANNING MANAGER
SR 167 PROJECT MANAGER
SR 167 MASTER PLAN EQUITY ANALYSIS LEAD
SR 167 MASTER PLAN EQUITY AND ENVIRONMENTAL ANALYSIS
SR 167 MASTER PLAN PARTNER & COMMUNITY ENGAGEMENT

Equity Advisory Committee meeting #4: Agenda and Objectives

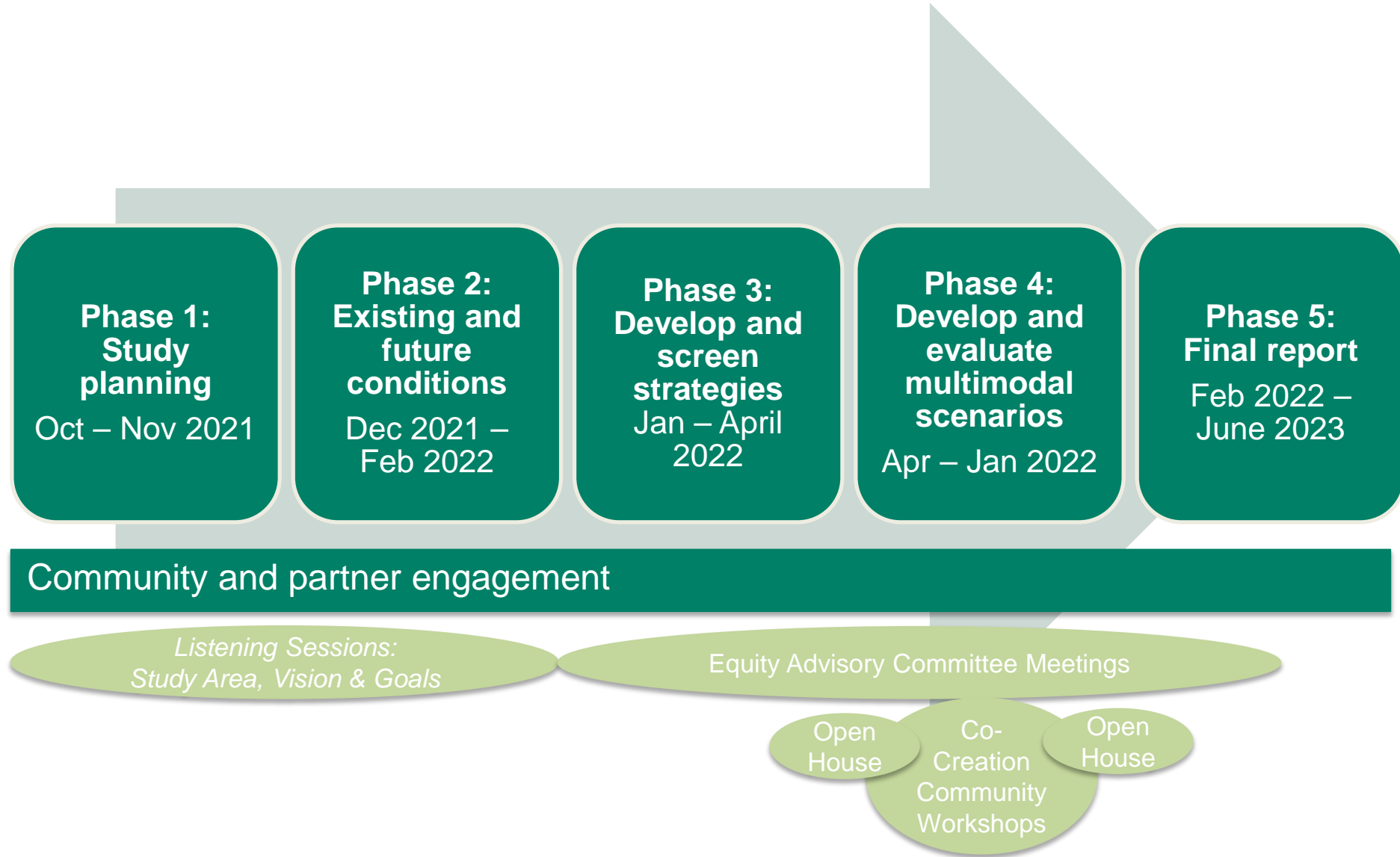
Agenda:

- Welcome and Introductions
- Community Outreach Report Out
- Transit Projects & Breakout Group
- Pedestrians, Bicycles, and Trails Projects & Breakout Group
- Car and Truck Projects & Breakout Group
- Next Steps

Objectives:

- Report back from the summer community outreach
- Share how we are incorporating feedback
- Gather feedback on how we are incorporating what we heard

SR 167 Master Plan Schedule



Community Outreach Report Out

Key Feedback from Summer Outreach

Capacity expansion

- Requests for more and wider lanes, longer on-ramps, and more dedicated lanes for trucks, HOV lanes, and HOT lanes.
- Requests for increased transit options including more Light Rail and safer public transit.

Improved connectivity

- Requests for improved connections to I-5, I-405, and other interchanges.
- Less traffic congestion along the corridor.

Planning for the future

- Desire for finishing project construction quickly.
- Ensure this project anticipates future traffic needs.

“I would really encourage creating more lanes or finding ways to incorporate new routes in others as alternatives.”

“Carpool/HOV lanes need to be continuous, not start/stop. 167 needs 4+ lanes.”

“Light rail and more parking at sounder locations. More public transit options.”

Online Open House & Survey: June 29- July 29

Summer events:

- Kent Cornucopia days: July 8 – 10
- Sumner Rhubarb days: July 9 – 10
- Eastside Tacoma Farmers Market: July 26
- SeaTac Music in the Park: July 26
- Auburn Farmer’s Market: August 7
- Milton Days: August 19 – 20

Online Open House Survey Key Takeaways

1. Our survey respondents were not demographically representative of the project area.
2. Our survey respondents were not geographically representative of the study area. We heard from a disproportionately large percent of respondents who live in Puyallup and Bonney Lake.
3. Most survey respondents live or work on the SR 167 corridor.
4. Reducing traffic on SR 167 was the participants most desired outcome.
5. The survey is one of multiple tools we are using to solicit community input.

SR 167 Online Open House & Survey


WSDOT is studying options to improve the movement of people and goods along SR 167. The study area includes communities from Renton to Tacoma. If you live, work, or travel this area, visit the online open house to learn about the planning process and share your ideas by taking our survey. The online open house is available from June 29-July 29, 2022.

SR 167 在线开放日及问卷调查
WSDOT 正在研究改善 SR 167 沿线的人员和货物流动的方案。研究区域包括从伦顿 (Renton) 到塔科马 (Tacoma) 的社区。如果您在该地区生活、工作或出行, 请访问在线开放日来了解规划过程并参与我们的问卷调查, 分享您的想法。在线开放日的开放时间为 2022 年 6 月 29 日至 7 月 29 日。

Online Open House at Survey ng SR 167
Pinarangalan ng WSDOT ang mga orasyon upang mapabuti ang paggalaw ng tao at bagay sa SR 167. Kasama ang mga komunidad sa gilid ng Renton at Tacoma sa lugar ng pag-aaral. Kung kayo ay nakatira, nagtatrabaho, o nagtatagay sa lugar na ito, bisitahin ang online open house upang malutasin ang problema ng pagpapalano at bahagi ang inyong mga ideya sa pamamagitan ng pagkuha ng survey. Ang online open house ay bukas mula Hulyo 29- Agosto 29, 2022.

SR 167: Diên thục trực tuyến và khảo sát
WSDOT đang thực hiện nghiên cứu các phương án cải thiện di chuyển cho người và hàng hóa dọc theo SR 167. Khu vực nghiên cứu bao gồm các cộng đồng từ Renton đến Tacoma. Nếu Quý vị đang sinh sống, làm việc hoặc đi lại tại khu vực này, vui lòng truy cập diễn đàn trực tuyến để tìm hiểu về quy trình lập kế hoạch và chia sẻ ý kiến bằng cách tham gia khảo sát. Diễn đàn trực tuyến bắt đầu từ 29 tháng 6 đến 29 tháng 7, 2022.

Kulanka Furan ee Khaalka Intarreeka ah iyoo Sahanka SR 167
Waxaad Gaadicka ee Gobolka Washington (WSDOT) waxay darsaysaa fursadaha lagu wanaajinayo dii-udhaaqaada dadka iyo badeecooyinka ee istoomaalada jidka SR 167. Goobta darsaadada waxaa ka mid ah ba-lshooyinka Renton iyo Tacoma. Haddii aad ku nooshahay, ka shaqayso, ama aad ku safarto aaggan, booqo kulanka furan ee Khaalka intarreeka ah si aad wax ugu ogaato Fadhiga wax loo qabsaday ayayna aadna ula wadaagto fikradahaaga adiga gaacariyaya sahankeeda. Kulanka furan ee Khaalka intarreeka ayaa la haki karaa laga bilaabo Juun 29-Luulyo 29, 2022.



engage.wsdot.wa.gov/SR167masterplan Participate by phone at 1-800-574-9450

SR 167 Master Plan SR 167 总体规划 • Генеральный строительный план внутриштатного шоссе 167 (SR 167) Plan Maestro de la SR 167 • Kế hoạch tổng thể SR 167

WSDOT

2,642 total responses from Jun. 29 – Jul. 31
 2,616 in English
 21 in Spanish
 3 in Chinese
 2 in Russian

Desired outcomes and demographics

+ More likely want outcome
- Less likely want outcome

Note: outcomes not listed did not have statistically significant demographic differences.

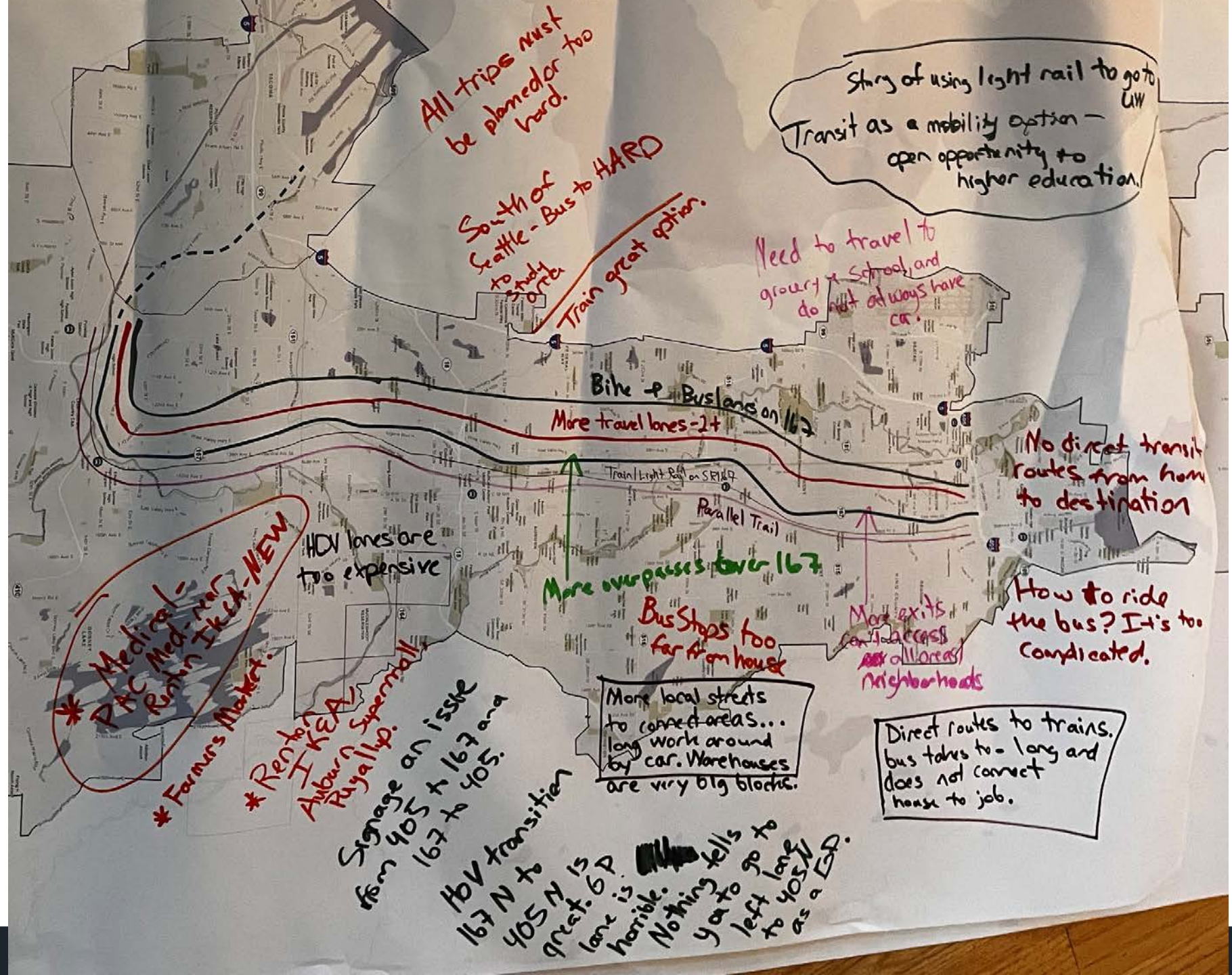
Desired outcome	BIPOC	Income <\$50k	Rent	Disability	Drive 3+ days work	Age 65+
Less stop-and-go traffic on SR 167		-			+	
More connected sidewalk system	+	+	+	+	-	
More connected bike lanes and routes		+				
More regular transit service	+	+	+			
Faster and more predictable transit service	+		+		-	-
More commuter transit service					-	-

Several of the demographic groups who were underrepresented among survey respondents – BIPOC, low income, and renters – are more interested than their overrepresented counterparts to desire many of the outcomes that prioritize walkers, bikers, and public transportation. **This indicates that the percentages listed for the priority outcomes reported on the previous page do not adequately represent the desires of the community in the project area. If we had reached a more representative set of respondents, we could expect the percent to be somewhat lower for the top choice and the options about sidewalks, bike lanes, and transit to have higher levels of support.**

Co-creation workshops

In person and hybrid events reaching nearly 70 community members

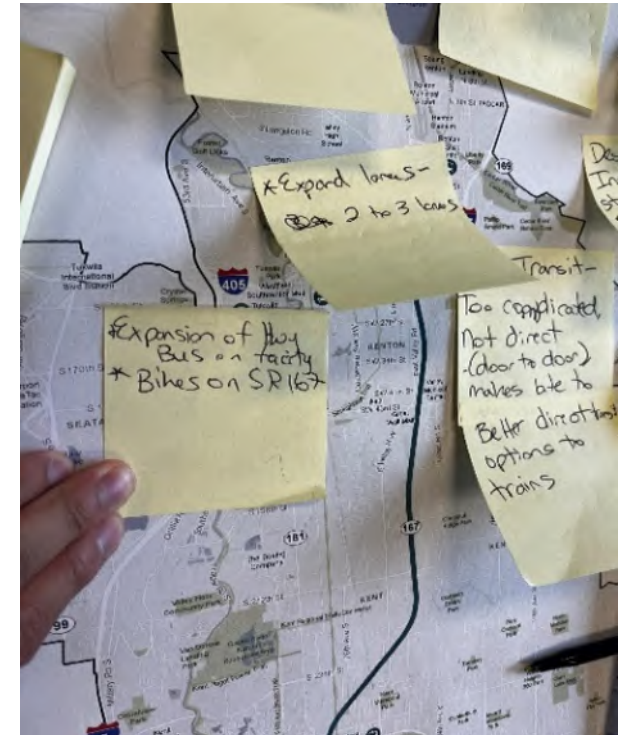
- SeaTac - Aug 26
- Federal Way - Aug 30
- Tukwila - Sept 1
- Kent - Sept 12
- Puyallup - Sept 13



Key Feedback from Co-creation workshops

Challenges:

- Commuters avoid toll lanes because they are unsure of how it works and don't know the exact cost; some think it's too expensive and should consider the low-income community
- Heavy traffic during morning and night commute
- Better connection to local neighborhoods and streets
- International students rely on public transportation and their options are very limited
- SR 167/I-405 interchange is not safe
- Most travel by car because public transportation options are limited where they live
- Need to build a bike infrastructure along SR 167
- SR 167 is not being utilized for local travel, only long trips
- Accessing the airport is a challenge
- Taking transit does not provide a time savings or benefit -takes just as long as sitting in a vehicle
- Walking to transit (bus, light rail) is long and challenging



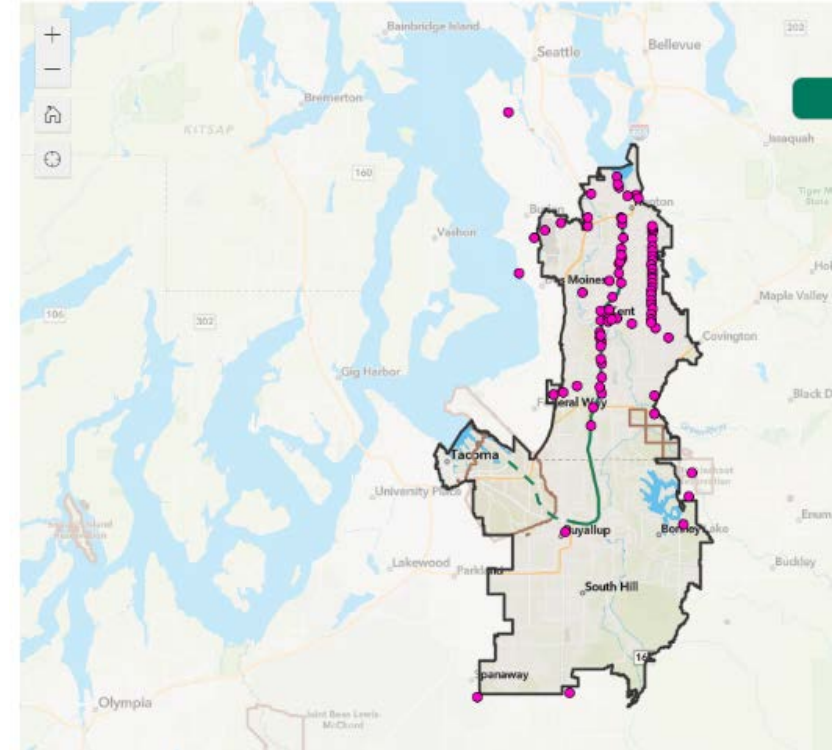
Key Feedback from Co-creation workshops

Solutions:

- Hope to expand the number of lanes to accommodate more traffic
- Adding more exits along SR 167 would increase access to frequently visited locations
- Need for more visibility along the corridor, including lighting and reflective paint
- Shift workers would benefit from expansion of Commute Trip Reduction (CTR) programming
- Dedicated lane for freight traffic or specific hours
- More education about express toll lanes or HOT lanes
- More HOV lanes on SR 167
- Provide reduced or free bus fares
- Better signage along SR 167



SR 167 Master Plan PEL Study -
Co-Creation Workshop Interactive Map



How are we using the feedback?

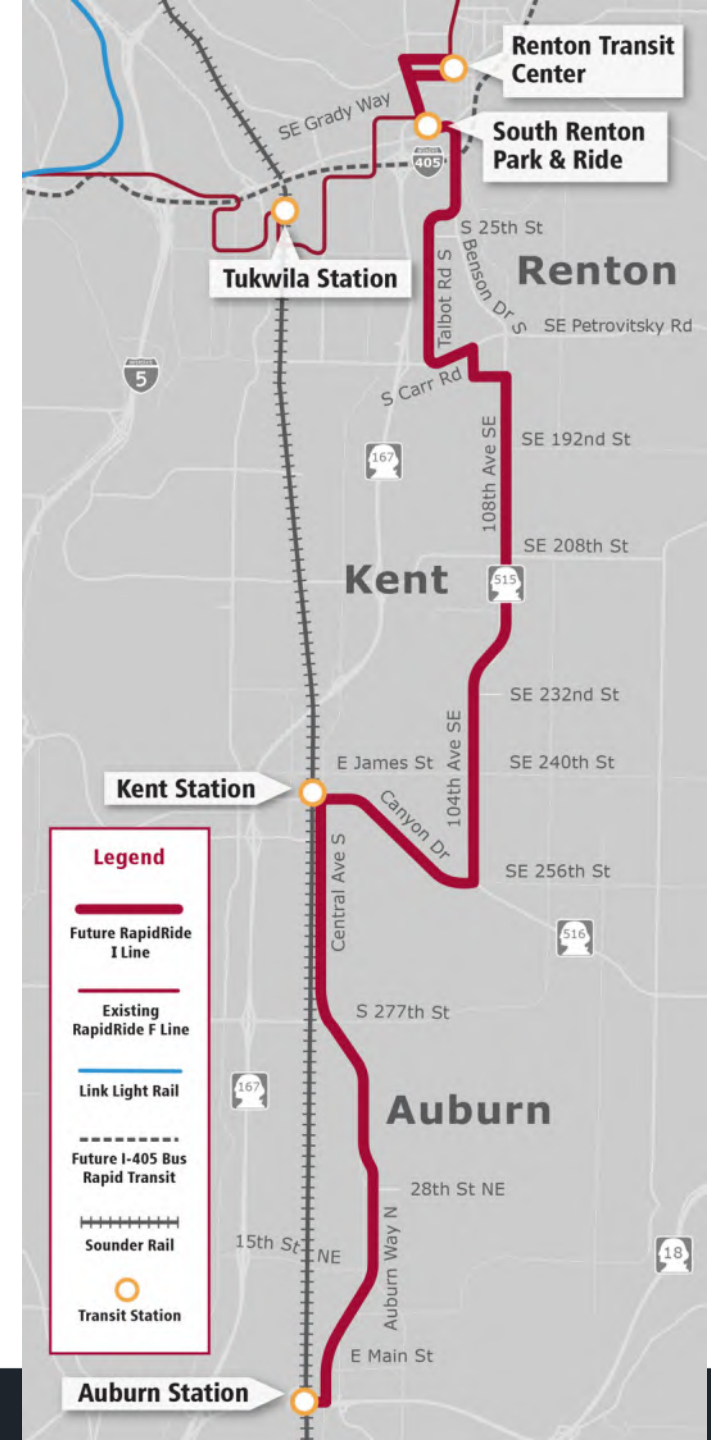
Incorporating Feedback into Scenarios

Feedback	Potential Projects
Transit is not reliable or accessible	<ul style="list-style-type: none">• New east-west transit routes• New on-demand transit areas/services (e.g., Via, Pingo)• More night/weekend service
Sidewalk and trail gaps are barriers to access	<ul style="list-style-type: none">• New connections to regional trails• Add/improve sidewalks and bike lanes through interchanges or across SR 167• Build missing sidewalk segments
Lighting, visibility, and design can improve sense of security	<ul style="list-style-type: none">• Identify areas of priority for improved lighting and placemaking• Develop a programmatic level of investment for security and placemaking investments
Traffic congestion is a barrier to travel	<ul style="list-style-type: none">• New managed (toll/truck) lanes on SR 167• Traffic signal upgrades• Improve freight access at interchanges
Tolling may be a barrier to low-income travelers on SR 167	<ul style="list-style-type: none">• Recommend a statewide low-income tolling program

Transit Projects & Breakout Group

Transit Projects

- Currently funded:
 - King County Metro RapidRide I Line
 - Link light rail extension to Federal Way and Tacoma
 - Sounder access and station upgrades
 - Stride BRT from Burien-Renton-Bellevue-Lynnwood
- Projects being considered for our scenarios:
 - See our map



Break

Pedestrians, Bicycles, and Trails Projects & Breakout Group

Pedestrian, Bicycles, and Trails Projects

- Currently funded:
 - Tacoma to Puyallup Trail
 - Numerous intersection crossing, curb ramp, and sidewalk projects in regional growth centers
 - Bicycle lane projects in downtown Puyallup and Kent
- Projects being considered for our scenarios:
 - See our map



Car & Truck Projects & Breakout Group

Car and Truck Projects

- Currently funded:
 - SR 167 extension between Port of Tacoma and Puyallup
 - Express toll lane upgrades
 - Southbound auxiliary lane between Willis and S 277th Street
 - Southbound toll lane between Ellingson Rd and SR 410
 - I-405 express toll lanes between Renton and Bellevue
- Projects being considered for our scenarios:
 - See our map



Final Thoughts - Mentimeter

- <https://www.menti.com/aln127p4q2p6>
- What type of projects are not as important to you or the people you serve?
- What type of projects / solutions are most important to you?

Next Steps

Community engagement

- Online open house #2 – Late winter / early spring 2023

Partner coordination

- Technical Advisory Group meeting – Nov. 9
- Equity Advisory Group meeting – Nov. 18
- Policy Advisory Group meeting – Nov. 30

April Delchamps, AICP
Planning Manager
(206) 305-9479
DelchaA@wsdot.wa.gov

Chris Breiland, PE
SR 167 Project Manager
(206) 576-4217
BreilaC@consultant.wsdot.wa.gov

Amy Danberg
SR 167 Master Plan Partner & Community Engagement
(206) 962-9635
DanberA@consultant.wsdot.wa.gov

Henry Yates
Equity Advisory Committee Facilitator
Henry@yatescg.com

Questions?