

SHAFT HOOP OPTIONS			
	WELD DIMENSIONS (IN.)		
	S	E	LENGTH (L)
#7	7/16	1/4	7
#8	1/2	1/4	8
#9	9/16	5/16	8

SHAFT SPIRAL OPTIONS			
	WELD DIMENSIONS (IN.)		
	S	E	LENGTH (L)
#4	1/4	1/8	4
#5	5/16	3/16	6
#6	3/8	3/16	6

**Designer Notes:**  
 Butt welded hoops required if plastic hinging is expected.

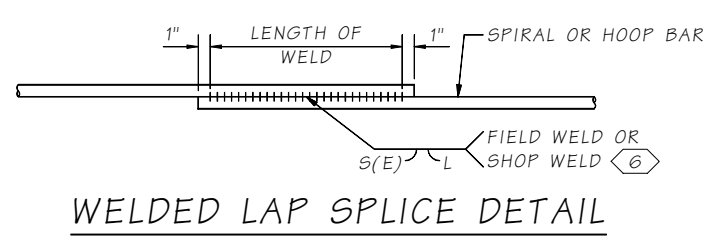
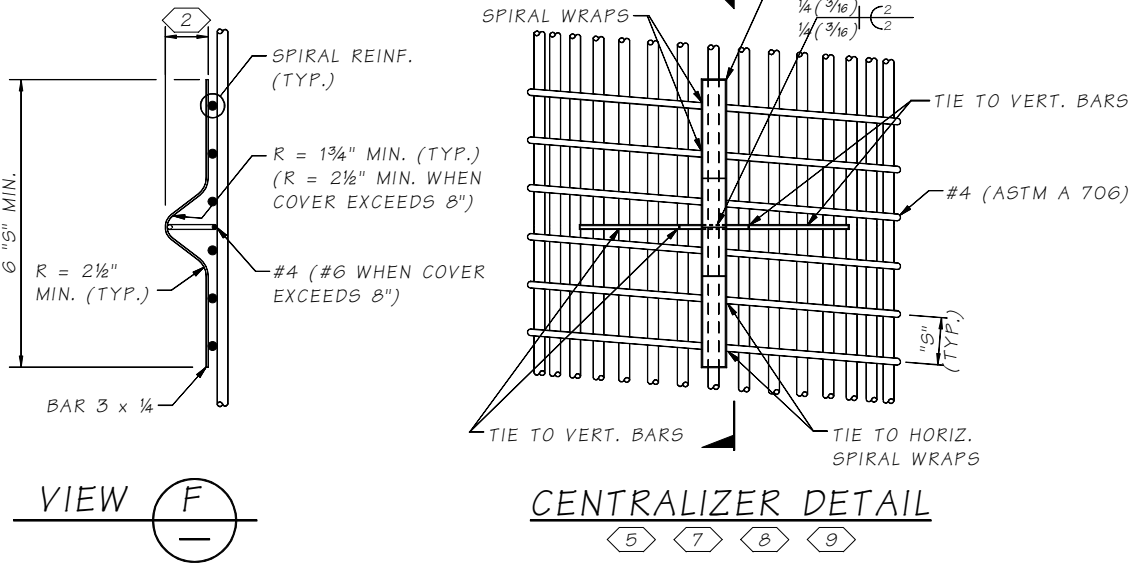
Specify optional splice / mechanical coupler for S1 bar lengths 80'-0" or less. Bars are often available at 80'-0"

Mechanical coupler required for bar sizes #14 and #18

Reinforcement cage outside diameter shall be per BDM table 7.8.2-2

Geotech to provide "X" feet in Note 10. Remove Note 10 if not required.

- NOTES:**
- CONSTRUCTION JOINT WITH ROUGHENED SURFACE.
  - MINIMUM CONCRETE COVER MINUS 1/2".
  - SEE STD. SPEC. 6-19.3(3)b5 FOR PERMANENT SLIP CASING.
  - SEE STD. SPEC. 6-19.3(5)c. FOR MINIMUM CONCRETE COVER.
  - SEE STD. SPEC. 6-19.3(5)b FOR SPACING REQUIREMENTS.
  - WELDING SHALL MEET THE REQUIREMENTS OF STD. SPEC. 6-02.3(24)E FOR WELD DIMENSIONS, SEE SHAFT / HOOP OPTIONS TABLE THIS SHEET
  - CENTRALIZERS SHALL BE EPOXY COATED OR PAINTED WITH PAINT CONFORMING TO STANDARD SPECIFICATION 9-08.1(2)c OR 9-08.1(2)f AFTER FABRICATION.
  - EACH LEG SHALL BE TIED TO TWO (2) VERTICAL BAR AND TWO (2) SPIRAL WRAPS OR TWO (2) HOOPS.
  - CAGECASTER® REBAR CAGE SPACERS BY FOUNDATION TECHNOLOGIES MAY BE USED IN LIEU OF DETAIL SHOWN. SPACING REQUIREMENTS SHALL BE PER MANUFACTURER'S RECOMMENDATIONS. EACH LEG SHALL BE TIED TO A MINIMUM OF TWO (2) SPIRAL WRAPS OR HOOPS.
  - EXCAVATION IN ADVANCE OF THE CASING TIP SHALL NOT EXCEED "X" FEET.



LAST REVISED: 04/14/2021

JOB NO. SHEETS 7.8.2-1

Bridge Design Engr.	M:\STANDARDS\Shafts and Columns\7.8.2-1_TYPICAL SHAFT DETAILS.MAN					REGION NO.	STATE	FED. AID PROJ. NO.	SHEET NO.	TOTAL SHEETS
Supervisor						10	WASH.			
Designed By						JOB NUMBER				
Checked By										
Detailed By										
Bridge Projects Engr.										
Prelim. Plan By										
Architect/Specialist	DATE	REVISION	BY	APPD						

BRIDGE AND STRUCTURES OFFICE

BRIDGE SHEET NO.

SHEET

OF

SHEETS

TYPICAL SHAFT DETAILS