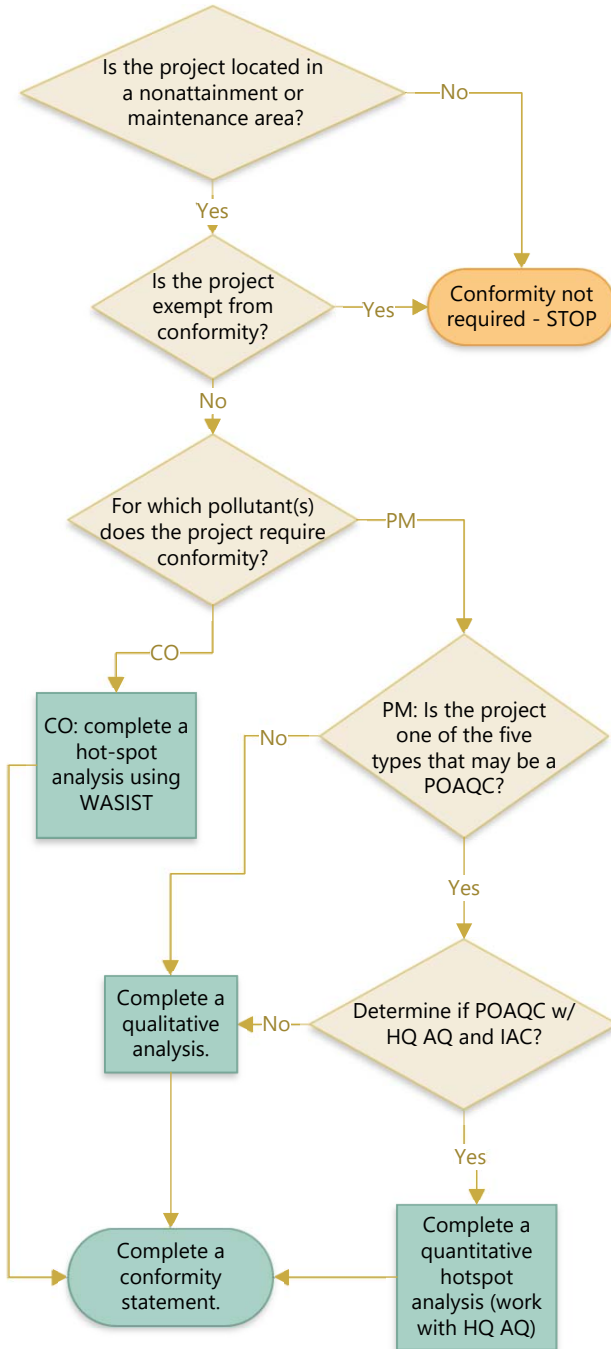
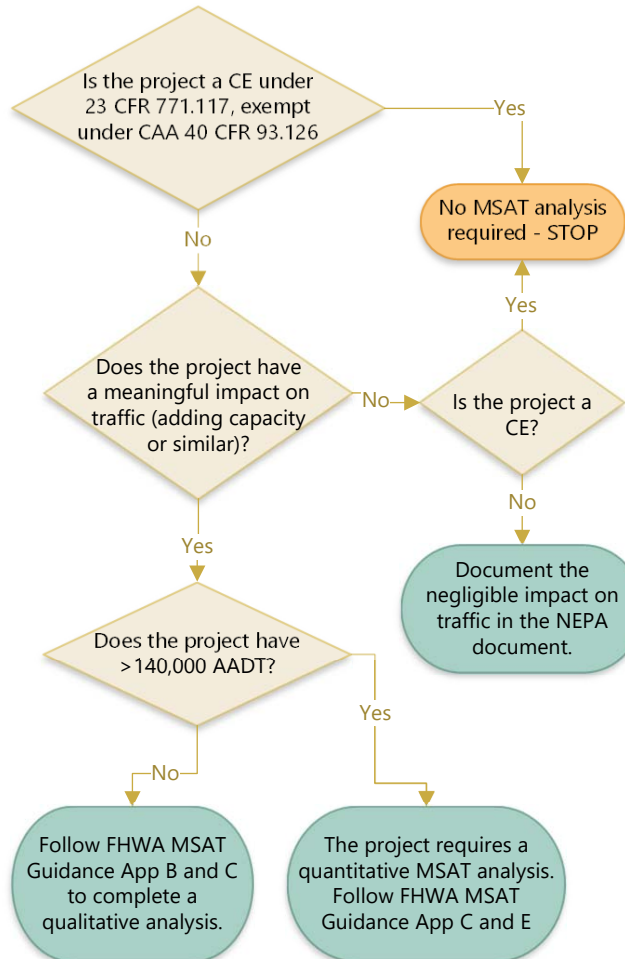


CONFORMITY



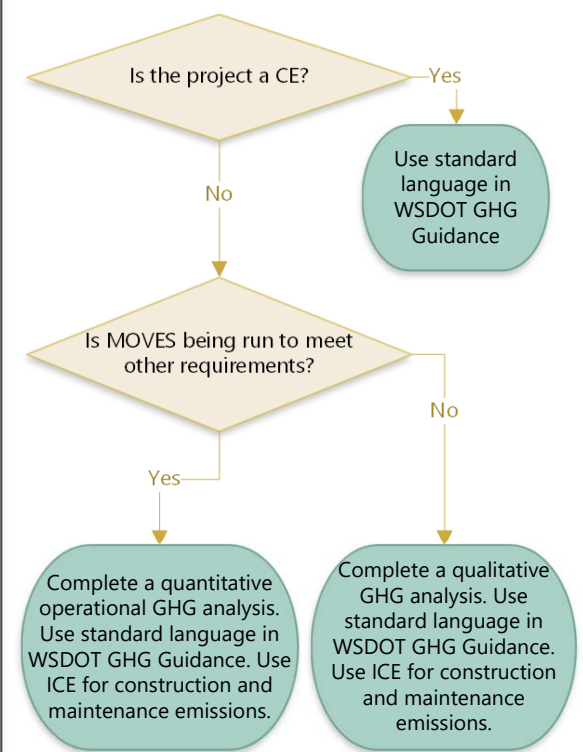
MSAT EMISSIONS



Definitions

AADT = annual average daily traffic
 CAA = Clean Air Act
 CO = carbon monoxide
 GHG = greenhouse gas
 IAC = interagency consultation
 ICE = FHWA's Infrastructure Carbon Estimator Tool
 MSAT = mobile source air toxics
 PM = particulate matter
 POAQC = project of air quality concern
 WASIST = WA State Intersection Screening Tool

GHG EMISSIONS



ENERGY

