

UTILITY ACCOMMODATION (PERMIT OR FRANCHISE) APPLICATION GUIDELINES

APPLICATION DOCUMENT CHECKLIST

The following forms and documents are required for permit application. Some forms may not be required depending on the impact of the proposed work. Please see instructions. For point of contact for ALL questions: see WSDOT utilities office [link](#).

1. **Utility Accommodation Application (Permit or Franchise)** [See Page 2](#)
 - 1a. **Utility Accommodation Application (Permit/Franchise) Form**
 - 1b. **General Provisions for the Utility Accommodation Application Form**
 - 1c. **Application Submittal Instructions**
 2. **Utility Facility Description (UFD) Form** [See Page 2](#)
 3. **Right of Way Plan** [See Page 2-3](#)
 - 3a. **Limited Access: Temporary/Permanent Break in Access**
 4. **Utility Work Plans** [See Page 3-4](#)
 - 4a. **Vicinity Map**
 - 4b. **Utility Plan View**
 - 4c. **Profile, Cross Section, and/or Detail View of Proposed Utility**
 - 4d. **Bridge Attachment Plan** (*for bridge attachments*)
 5. **Utility Restoration Plan** [See Page 4-5](#)
 - 5a. **Landscape Restoration Detail** (*for roadside vegetation impacts*)
 - 5b. **Restoration for underground installations:**
 - 5b1. **Open Trench Detail** (*work in non-paved area*)
 - 5b2. **Open Cut Detail** (*work in paved area*)
 6. **Traffic Control Plan** [See Page 5](#)
 7. **Photos** [See Page 5](#)
 8. **Variances** (*work contrary to WSDOT Accommodation Policy*) [See Page 5-7](#)
 - 8a. **Open Cut Pavement**
 - 8b. **Shallow Depth Installation**
 - 8c. **Longitudinal Median Installation**
 - 8d. **Limited Access Encroachment Variance** (*longitudinal installations within Limited Access*)
 - 8e. **Scenic Classification**
 - 8f. **Uncased crossings**
 - 8g. **Control Zone**
 - 8h. **Roadway Prism Open Trench**
 9. **Bonds** [See Page 7](#)
 10. **Third Party Insurance** [See Page 7](#)
- Submittal Examples** [See Page 8 thru 17](#)

PLAN SHEETS
FOR CHECK BOXES 3 THRU 6
MUST BE 11" X 17" SIZE PAPER
NO SMALLER THAN 10 pt. FONT

UTILITY ACCOMMODATION (PERMIT OR FRANCHISE) APPLICATION GUIDELINES

GUIDELINES, LINKS TO FORMS, AND SUBMITTAL EXAMPLES

1. Utility Accommodation Application (*Permit or Franchise*)

1a. Utility Accommodation Application (Permit/Franchise) Form [224-696](#)

- PDF Download [Link](#), from WSDOT Forms [Webpage](#)
- Read the Instructions on the first page
- Fill out the “Contact Information if NOT the Utility” section on the second page if you are an authorized applicant on behalf of the utility.
- Utility Owner/Operator must sign and provide billing address.
 - A Charge Code (JZ####) will be assigned by the Department for billing of review, processing, and inspection charges. For more details, see [WSDOT Utilities Manual](#)
 - Billing invoice(s) will be sent to utility operator’s billing address for incurred charges.
 - **DO NOT** send the application fee with the application submittal; the Department will determine the application fee and will notify you for later payment.
 - To determine Mile Post, use the SnagMP Webpage [Link](#).
Instructions: Under Map View tab, zoom in and click on the work location and the Milepost will display in RED in the top left corner.
- Application Example [See Page 8-9](#)

1b. General Provisions for the Utility Accommodation Application Form [224-696GP](#)

- PDF Download [Link](#), from WSDOT Forms [Webpage](#)
- Review the general provisions, agree with the terms, and include with application.

1c. Application Submittal Instructions

- Submit all required forms and documents as email attachment
- Send application email to NWRUtilities@wsdot.wa.gov
 - Attachments cannot exceed 14MB in size
 - Email Subject Line: “County, State Route #, Milepost, Utility Company
 - Email Address is for submittals only, no questions/responses

2. Utility Facility Description (UFD) Form [224-697](#)

- Excel Download [Link](#), from WSDOT Forms [Webpage](#)
- UFD Example [See Page 10](#)
- Required Form: Attached filled out UFD [Excel](#) File for submittal
 - Acceptable UFD Excel version: Revised date 2019 or later

3. Right of Way Plan

- Instructions to download Right of Way Plans [See Page 18](#)
- Database Archive for finding Right of Way Plans [Link](#)
- Mark the location of the proposed work area and facilities in RED on the applicable Right of Way sheets.

UTILITY ACCOMMODATION (PERMIT OR FRANCHISE) APPLICATION GUIDELINES

- Most Right of Way plans show township, range, and section (TRS). To determine the work location relative to TRS, use WSDOT GeoPortal [Link](#) (not compatible with Microsoft Edge Browser). GeoPortal instructions:
 - On the Layers tab, select the box "Township/Section" and zoom in to work location.
 - Or use the Tools tab and enter the mile post to locate the work location.
- Right of Way Plan Example [See Page 11](#)

3a. Limited Access: Temporary/Permanent Break in Access

- Work that crosses over, under, or physically through WSDOT Limited Access controlled right of way may require WSDOT Headquarters Access approval. For details, see WSDOT Utilities Manual [Link](#)
- Work affecting interstate mainline or ramps require Federal Highway Administration (FHWA) approval which will increase application processing time.
- Required for any Work Zone Traffic Control that necessitates closure of roadway, lanes, ramps and/or shoulders within Limited Access Right of Way
- For longitudinal installation 300 ft or more, see [Limited Access Encroachment Variance\(8d\)](#)
- To determine if work is within Limited Access Right of Way:
 - Option 1: Use the WSDOT ArcGIS webpage [Link](#)
 - Select Legend and zoom to the work location.
 - Option 2: Use the Access Spreadsheet [Link](#)
 - Open the spreadsheet, in the "LIST" tab, filter for your state route, and the column P: "Established L/A" should provide you the access information according to the mile post range.
 - Check the Right of Way plan to identify if the proposed work is located inside the Limited Access hachured lines. See Example [Link](#)

4. Utility Work Plans

4a. Vicinity Map *(provide two different map scales)*

- Map scale one is zoomed out to show the closest major freeway and/or highway locations
 - Label location of proposed work
- Map scale two is zoomed in to show the local streets and intersections.
 - Label location of proposed work
- Vicinity Map Example [See Page 12](#)

4b. Utility Plan View

- Include WSDOT Right of Way boundary
- Include lane and shoulder widths
- Include distance(s) from any bridge columns and walls.
- Call out method of work (i.e. directional bore, pit locations and dimensions)
- Plan View Example [See Page 13](#)

4c. Profile, Cross Section, and/or Detail View of Proposed Utility

- Include WSDOT Right of Way boundary
- Include roadway, ditch, and wall features.

UTILITY ACCOMMODATION (PERMIT OR FRANCHISE) APPLICATION GUIDELINES

- Include lane and shoulder widths
- Call out method (i.e. directional bore, pit locations and dimensions)
- Include Bore Pit Dimensions
- Include size and type of pipe
- Include depth of pipe below roadway, ditches, and/or wall feature.
 - Minimum Depth Requirement [Link](#)
- For Aerial crossing, provide height of wire crossing the road to meet vertical clearance per [WAC 468-34-290](#)
 - Provide section detail showing pole location and cable crossing with elevation dimensions of pole and cable.
- Profile View Example [See Page 14](#)

4d. Bridge Attachment Plan

- Proposals requesting bridge attachments require additional review and processing time.
- Please do not contact the WSDOT Bridge Office directly. All communication shall be via the WSDOT Utilities Office
- Bridge attachment plans shall meet all criteria of the WSDOT Bridge Design Manual [Link](#)) and WSDOT Standard Specifications ([Link](#)).
- Review WSDOT Form 224-047 “General Notes and Design Criteria for Utility Installations to Existing Bridges” [Link](#)

5. Utility Restoration Plan

5a. Landscape Restoration Detail *(for roadside vegetation impacts)*

- For removal of trees and shrubs (avoidance and minimization of impacts required)
 - Provide plans showing replacement of trees and bushes.
 - For restoration requirements, follow Roadside Policy Manual [Link](#).
 - Plant establishment period is required after restoration, usually for 3 years.
 - Tree removal requires additional mitigation per Roadside Policy Manual
 - Timber values need to be provided by a professional timber cruiser and compensated for.
 - Roadside Restoration work and mitigation plantings can be covered by entering into a Fee and Lieu Agreement. Please contact WSDOT Utilities Office.

5b. Restoration for underground installations:

5b1. Open Trench Detail *(work in non-paved area, may require [variance\(8h.\)](#))*

- Required for soft shoulder trench excavation, bore pits, and pole removal.
- Below are the PDF and CAD details to incorporate into the plans.
 - Open Trench Detail, CAD (AutoCad, Microstation) [Email for Request](#)
 - Open Trench Detail, PDF [Email for Request](#). [See Page 15](#) for example

5b2. Open Cut Detail *(work in paved area, requires approved [variance\(8a.\)](#))*

- Required for installations cutting pavement and/or subgrade

UTILITY ACCOMMODATION (PERMIT OR FRANCHISE) APPLICATION GUIDELINES

- Below are the PDF and CAD details to incorporate into the plans.
 - Open cut detail, CAD (AutoCad, Microstation) [Email for Request](#)
 - Open cut detail, PDF [Email for Request](#). [See Page 16](#) for example

6. Traffic Control Plans (TCP)

- Traffic Control Plans are required if any of the following conditions apply:
 - Work to occur in roadway lane(s) and/or shoulder(s)
 - Work to occur outside of roadway but within the Clear Zone ([WSDOT Design Manual](#))
- All Traffic Control Plans must include the details and tables included in the traffic control examples on the WSDOT Work Zone Traffic Control Plans Website: [Link](#)
 - TC 1 thru TC 257 provide different examples and scenarios of traffic control closures
 - From the webpage, download the WinZip file for AutoCad or Microstation formatted versions.
 - Required: Modify the generic traffic control plan to be site specific for the work location
 - Label all highways, local streets, and roads shown
 - Add more lanes to show the work zone in relation to the actual roadway geometric
 - Do not remove any information from the traffic control plan examples. All signs, tables, distances, and other information is required.
 - This website is updated regularly with the newest tables and distances. Use only updated tables.
- See [Link](#) for Traffic Control Plan Checklist. Any missing checklist item will require a TCP re-submittal for another three weeks review.

7. Photos

- Provide Street View Photos and label work location in the photo.
- Photo Example [See Page 17](#)

8. Variances:

A variance is a proposed utility installation that is contrary to the WSDOT Utilities Accommodation Policy ([WSDOT Utilities Manual](#)). By definition, variances have the potential to negatively affect the continued operation of the highway. All variations from WSDOT Policy require written justification from the utility for review. Please note, variance requests increase application processing time and may not receive approval.

8a. Open Cut Pavement (*work that cuts into pavement/road prism*)

- Proposal requesting to open cut or trench in traveling lanes/roadway prism do not meet WSDOT's Utilities Accommodation Policy requirements. The applicant must provide justification why the utility cannot be installed according to policy. Submitted documentation need to be complete, pertinent, reasonable and verifiable.
- Variance Form Word Document Download [Link](#)

UTILITY ACCOMMODATION (PERMIT OR FRANCHISE) APPLICATION GUIDELINES

8b. Shallow depth installations (that do not meet the requirements of [WAC 468-34-200](#), [WSDOT Utilities Manual](#))

- Variance Form Word Document Download [Link](#)
- Shallow installation proposals shall include suitable reinforcement to protect the utility from vehicle loads and highway operations.

8c. Longitudinal Median Installation

- Variance Form Word Document Download [Link](#)
- Requires FHWA review and approval for interstate

8d. Limited Access Encroachment Variance

- Word Document Download [Link](#)
- Required for longitudinal Utility installation within WSDOT Limited Access Right of Way (longitudinal = parallel to lane exceeding 300 linear feet)
- To determine if work is within Limited Access Right of Way:
 - Option 1: Use the WSDOT ArcGIS webpage [Link](#)
 - Select Legend and zoom to the work location.
 - Option 2: Use the Access Spreadsheet [Link](#)
 - Open the spreadsheet, in the "LIST" tab, filter for your state route, and the column P: "Established L/A" should provide you the access information according to the mile post range.
 - Check the Right of Way plan to identify if the proposed work is located inside the Limited Access hachured lines. See Example [Link](#)
- Work affecting interstate mainline or ramps require Federal Highway Administration (FHWA) approval which will increase application processing time.

8e. Scenic Classification

- Variance Form Word Document Download [Link](#)
- To determine if the work location is in Scenic Classification A or B
 - See [WSDOT Utilities Accommodation Policy](#)

8f. Uncased crossings (that do not meet the requirements of [WAC 468-34-210](#))

- Variance Form Word Document [Email for Request](#)
- Casing requirements ([WAC 468-34-210](#), [WSDOT Utilities Manual](#))
- Casings are always required for bridge attachments
- Pressurized Pipe requires casing
- Gas Pipe is exempt from casing

8g. Control Zone (facilities proposed within [control zone](#))

- Install all utility objects outside the Control Zone in order to maintain a highway free from objects that may be struck by errant vehicles. Facilities that are proposed to be installed

UTILITY ACCOMMODATION (PERMIT OR FRANCHISE) APPLICATION GUIDELINES

inside the Control Zone (Location I or II) must be supported by sufficient justification for variance consideration.

- Variance Form Word Document Download [Link](#)
 - Utility Object Relocation Record (UORR) [Link](#)

8h. Roadway Prism Open Trench

- Open trenches within [Category 1 location](#) require variance approval.
- Open trenches near the edge of pavement reduce the life span of the roadway structure, can cause undermining of the paved roadway, lead to settling, and have other negative impacts. Because of such issues, open trenches within Category 1 locations are a variance from policy and require justification for approval.
- Variance Form Word Document Download [Link](#)
- For more details, see [WSDOT Utilities Manual](#)

9. Bonds

- Bonds, also known as sureties, provide WSDOT with a means of recovering costs in the event the utility does not meet its obligations with WSDOT returning the highway right of way to a safe condition for the traveling public.
- Blanket Bond for Permit/Franchise
 - Blanket Bond Form Word Document Download [Link](#)
 - A blanket bond for coverage of multiple Permits or Franchises under a single owner may be obtained. Blanket bonds are to be no less than \$10,000. A blanket bond is valid Statewide.
- Individual Bond for Permit/Franchise ([WAC 468-34-020\(3\)](#))
 - Individual Bond Form Word Document Download [Link](#)
 - Individual bonds shall be a minimum of \$1,000 actual amount will be determined by WSDOT on a case by case basis.) Individual bonds are one-time sureties attached to a single utility installation project. The bond is released upon satisfactory completion of the utility installation. For projects disturbing traveled lanes/shoulders, a bond will be required for a period to two years after date of project completion.
 - WSDOT will ask for an increased bond for higher impact work (i.e. directional bore crossing a major freeway).

10. Third Party Insurance

- The Utility may need to provide proof of insurance coverage prior to performing any work within state-owned highway right of way. See utility webpage for description. [Link](#)

All fields of the application form needs to be filled out completely. Send this application and additional attachments via email to the appropriate WSDOT Region Offices dedicated email inbox ([Link](#)) with the Washington State Department of Transportation (WSDOT). Signature is required before submittal.

UTILITY CONTACT INFORMATION

- The Utility's name and all contact information must be included Required Exhibits to be included with this application

LOCATION

- Visit www.snagmp.com to locate the mile post limits on the State Route.

INSTALLATION

- Under the "Describe Installation Type" box, provide a brief description of the type and size (i.e. fiber optic count, Coax size, copper pair count, conduit type and schedule, power voltage, casing type and size) of the facility and an explanation of the installation method (i.e. trenchless/ trenched) in relation to its location within the right of way.

REQUIRED DOCUMENTATION AND PERMITTING GUIDELINES

- Exhibits and additional information must be provided in separate attachments to the Application submittal email. Attachments shall include: Utility Facility Description ([UFD](#)), Right of Way Plans, Work Plans, Traffic Control Plans ([TCP Examples](#)), Photos, and Vicinity Map. See Submitting a Utility Accommodation [Webpage](#) for more details. If the proposal is a variance to WSDOT Utility Accommodation Policy (Utility Manual, [120.14](#)), please contact the Region Utilities Accommodation Engineer ([Map](#)) for early coordination.

BILLING INFORMATION

- Make sure the Federal Tax ID number is included. It is required for processing the Permit/Franchise.
- The Applicant Reference Work Order Number is for the convenience of the Utility, connecting the Utility job number, the WSDOT work order and the Franchise/Permit Number with the payment.
- The billing address must be consistent with the address that is associated with the Tax ID number.

UTILITY AUTHORIZED SIGNATORY

- Authorized Signature must be by the Owner/Operator of the Utility. Signature is required before submitting your application to the appropriate WSDOT Region Offices dedicated email inbox ([Link](#))

SUPPLEMENTAL CONTACT INFORMATION OF AUTHORIZED AGENT IF NOT THE UTILITY

- In cases where a consultant or other approved entity is authorized to apply on behalf of the Utility, ensure that contact information for the person processing the application is filled in this section.
- Note: The Utility Contact listed on the application is to be included in the email correspondence with an authorized agent.
- Required only if applicable

Utility Accommodation Application (Permit or Franchise)

To determine Mile Post, use the SnagMP Webpage Link: Under Map View tab, zoom in and click on you work location and the Mile Post will display in RED in the top left corner.

Utility Contact Information		<small>CLEAR FORM</small>
Utility Company Big City Water and Sewer District	Utility Contact Name Dan Martin	

Utility Company Name, Owner/Operator of Utility

Representative for Utility Company, could be Utility Engineer

Email Dan Martin@BCW.net	Phone (Office/Cell/Voicemail) 206-111-2222
-----------------------------	---

Location (www.snagmp.com)			
State Route 522	Milepost Begin 5.01	Milepost End 5.10	County King County

Minimum Required Exhibits

Installation		Submit the Following Documentation:
Please Check One <input type="checkbox"/> Power <input type="checkbox"/> Water <input type="checkbox"/> Gas <input type="checkbox"/> Other _____	Please Check All That Apply <input checked="" type="checkbox"/> Buried <input type="checkbox"/> Aerial <input type="checkbox"/> Surface Feature (Pole, ped, vault) <input type="checkbox"/> Attached to a bridge/structure	Utility Facility Description (UFD) Plan Sheets For Additional Documents Applicable to your work, see Submitting a Utility Accommodation Application Webpage (Link)

Must Check box that

Must Check box that

Describe Installation Type (Briefly explain)

Direction drill 8" PE sewer pipe with 12" metal casing crossing SR 522 from Private Property to Existing District Sewer Main. Entry Bore Pit is on Private Property and exit Bore Pit is on Soft shoulder in WSDOT ROW for sewer main for connection.

Preferred and Estimated Start of Construction. Enter Season is acceptable.

Describe utility installation and method of installation. Add owner of other utility poles or conduit

Required estimated duration for construction and roadway closure

Anticipated Construction Start Date: Spring-Summer	Project Duration: 1 week
--	--------------------------

Billing Information*			
Contact Name Amanda Cook	Billing Contact Person for Utility Company for processing WSDOT invoice for Accommodation review and inspection. Note: Could also be representative for Utility Company if that person is also responsible for processing WSDOT invoice billing		
Street 1119 221th st se	Address of Billing Contact Person		
City Lynnwood	State wa	Zip + 4 98087	Email of Billing Contact Person
Phone (Office/Cell/Voicemail) 206-123-1234	Utility Company Federal Tax ID: REQUIRED	Email Amanda.Cook@BCW.net	Work Order will be link to permit/franchise number and WSDOT invoice
Federal Tax ID 222-33-4444	Authorized Signature must be by the Owner/Operator of the Utility, unless delegated otherwise	Applicant Reference Work Order (optional) w0.1253.2365.0	

Address of Billing Contact Person

Phone number of Contact Person

Email of Billing Contact Person

Utility Company Federal Tax ID: REQUIRED

Work Order will be link to permit/franchise number and WSDOT invoice

Utility Authorized Signatory		WSDOT will send Utility a invoice Account Number (ex. JZ####) later for review/processing/inspection	
Signature <i>Amanda Cook</i>	Name & Title/Owner Amanda Cook, Permit Coordinator	Date 8-13-18	

Authorized Signature must be by the Owner/Operator of the Utility, unless delegated otherwise

WSDOT will send Utility a invoice Account Number (ex. JZ####) later for review/processing/inspection

The Authorized Signature indicates the [General Provisions](#), as provided, have been read and are agreed to by the Utility. The Utility understands, based on the proposed installation, applicable special provisions will be provided at issuance of your Permit or Franchise.

* WSDOT has the authority to invoice the Utility for all work associated with the review, processing and inspection of the proposed installation. The applicant promises to pay any additional costs, in addition to the fees, incurred by WSDOT in accordance with [WAC 468-34](#) and [RCW 47.44](#).

Engineering firm for Developer Company or Property Owner

Supplemental Contact Information		if NOT the Utility	
Company Name Jacobs Consultant Engineering for Pacific Homes Inc	Contact Name John Jones		
Email John.Jones@Engineering.com	Phone (Office/Cell/Voicemail) 206-123-1234		

Representative for Engineering firm, Developer Company, or Property Owner



Use the SnagMP Webpage [Link](#)
Under Map View tab, zoom in and click on you work location and the Mile Post text will display in RED in the top

Clearly describe Installation Method, Location, and size and type of utility facility to be installed. Also add other utility owner of the poles or conduit.

Leave Blank Grayed Out Area, Filled by WSDOT. (Typical)

Utility Facility Description

All Grayed Out Areas are For Department Use Only				Accommodation Number:	
State Route Number:	11	SnagMP (Link)		Access Control:	Scenic Class:
Begin Mile Post:	3.75	End Mile Post:	3.75	T, R, Sec:	

Facility Description - Provide a summary of the proposed work: (press ALT+Enter to insert line break)

Work inside of ROW: Directional Bore across Chuckanut Dr(SR 11) road crossing.
 Work outside of ROW: Replacing 1 direct buried primary power cable in new 2" conduit via open trench in soft shoulder, Replace Riser and rebuild overhead termination to Utility standard @ P01

Additional Notes:

Begin Mile Post	End Mile Post	Left, Right or Xing	Offset Distances (feet)			Facility Description <small>(indicate size and/or diameter, and material)</small>	Right of Way		Aerial, Buried, Bridge or Surface	Scenic Class	Access Control	Remarks and Installation Comments <small>1) Indicate where item enters/leaves R/W. 2) Include pertinent topography info (turnouts, Rd. approaches, intersections, culvert, guardrail, xing method, split grade/under/overpass, etc.)</small>
			From Center Line	From Edge of Traveled Way (Fogline)	Depth or Height		Left	Right				
3.75	3.75	Left	30' LT	19' LT	60"	1-2" SCH 80 conduit with 1 1/0 primary cable	30		Buried			Enter R/W
3.75	3.75	Xing	30'LT to 30'RT	19'LT to 19'RT	60"	1-2" SCH 80 conduit with 1 1/0 primary cable	30	30	Buried			DIRECTION BORE INSIDE ROW. BORE PITS ARE OUTSIDE OF ROW
3.75	3.75	Right	30' RT	19' RT	60"	1-2" SCH 80 conduit with 1 1/0 primary cable		30	Buried			Leave R/W

For crossing, label both right and left offset from centerline

For crossing, label both right and left offset from right fogline and left fogline

Depth or Height is required

Label size and type of conduit and type of cable

Enter Right of Way Width from the Center of the Road

Select Buried, Aerial, Bridge or Surface

Location of R/W entry required

Separate row for Crossing Installation Method

Location of R/W exit required

FED. ROAD DIST. NO.	STATE	FED. AID PROJ. NO.	FISCAL YEAR	SHEET NO.	TOTAL SHEETS
1	WASH.	18	1920	7	9

T. 35N. R. 3E. W.M.

SUPERSEDED

STA. 640+34.2 TO STA. 643+08
SUPERSEDED BY SR 11, ALLEN
TO BURLINGTON, SHEET 4 OF 6
SHEETS, APPROVED FEB. 17, 1925

WSDOT R/W LIMIT 30' LT

2'X8' Bore Pit on Gravel Driveway outside of R/W

SR 202 MP 3.75 (30' LT) Exit R/W

Directional Bore 60" below Highway

** Township, Section, Range and Quadrant can be found in WSDOT GeoPortal Webpage

WSDOT R/W LIMIT 30' RT

SR 202 MP 3.75 (30' RT) Enter R/W

2'X8' Bore Pit on soft shoulder outside of R/

** Point "B", Label your work location on the Right of Way Plan

** Point "A" in WSDOT GeoPortal Webpage below.

ALL PLANS ARE SUBJECT TO CHANGE. PARTIES SEEKING PRECISE, CURRENT INFORMATION SHOULD CONSULT THE OFFICIAL PLAN ON FILE IN THE DEPT. OF TRANSPORTATION IN OLYMPIA.

The screenshot shows the WSDOT GeoPortal interface with several red callouts and arrows pointing to specific elements:

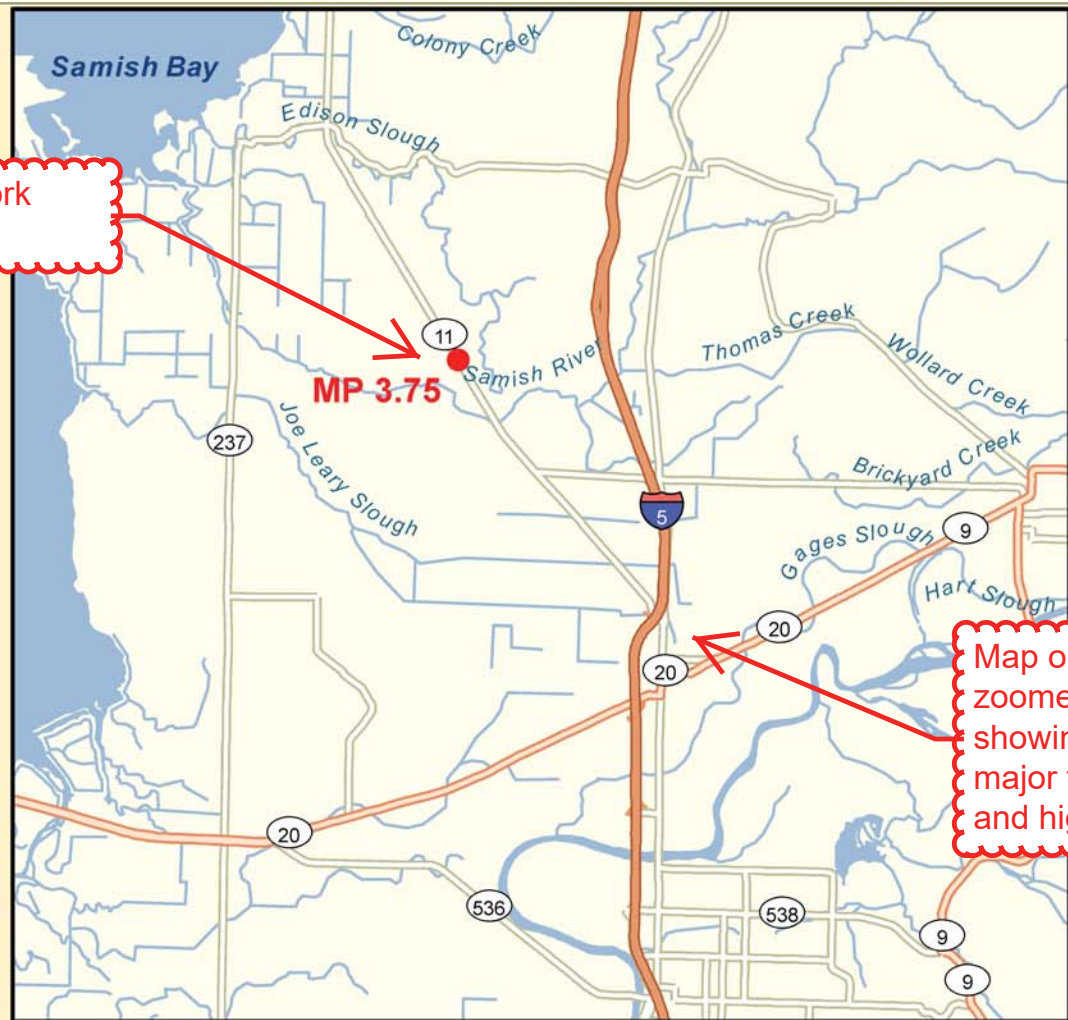
- ** Select Layers Tab**: Points to the 'Layers' tab in the 'Map Controls' panel.
- ** Select Tools Tab**: Points to the 'Tools' tab in the 'Map Controls' panel.
- ** Select Route Number**: Points to the 'Route' dropdown menu in the 'Find Route Location' section.
- ** Enter Mile Post**: Points to the 'Milepost' input field in the 'Find Route Location' section.
- ** Select Township/Section Box**: Points to the 'Township / Section' checkbox in the 'Political Boundaries' section.
- ** Point "B"**: Points to a green square on the map representing a specific location.
- ** NE Quarter Section**: Points to a specific section on the map.
- ** SE Quarter section**: Points to another specific section on the map.
- ** Point "A"**: Points to a red square on the map representing a specific location.
- ** T=35N, R=3E**: Points to the township and range information on the map.

HOW TO USE GeoPortal

SR 11
BLANCHARD - ALLEN
SKAGIT COUNTY
R/W PLAN
STA. 590+00 TO STA. 643+00
STATE OF WASHINGTON
STATE HIGHWAY DEPARTMENT
OLYMPIA WASHINGTON

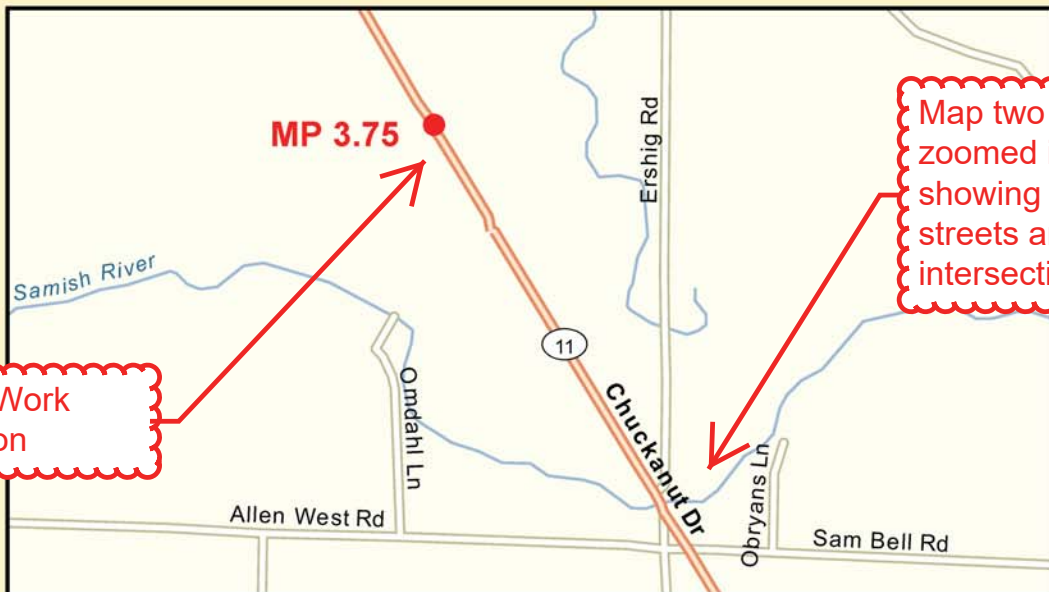
Exhibit 'C'
Right of Way Plan
Example
Page 1 of 1

SHEET 6 OF 6 SHEETS



Label Work Location

Map one is zoomed out showing major freeway and highway

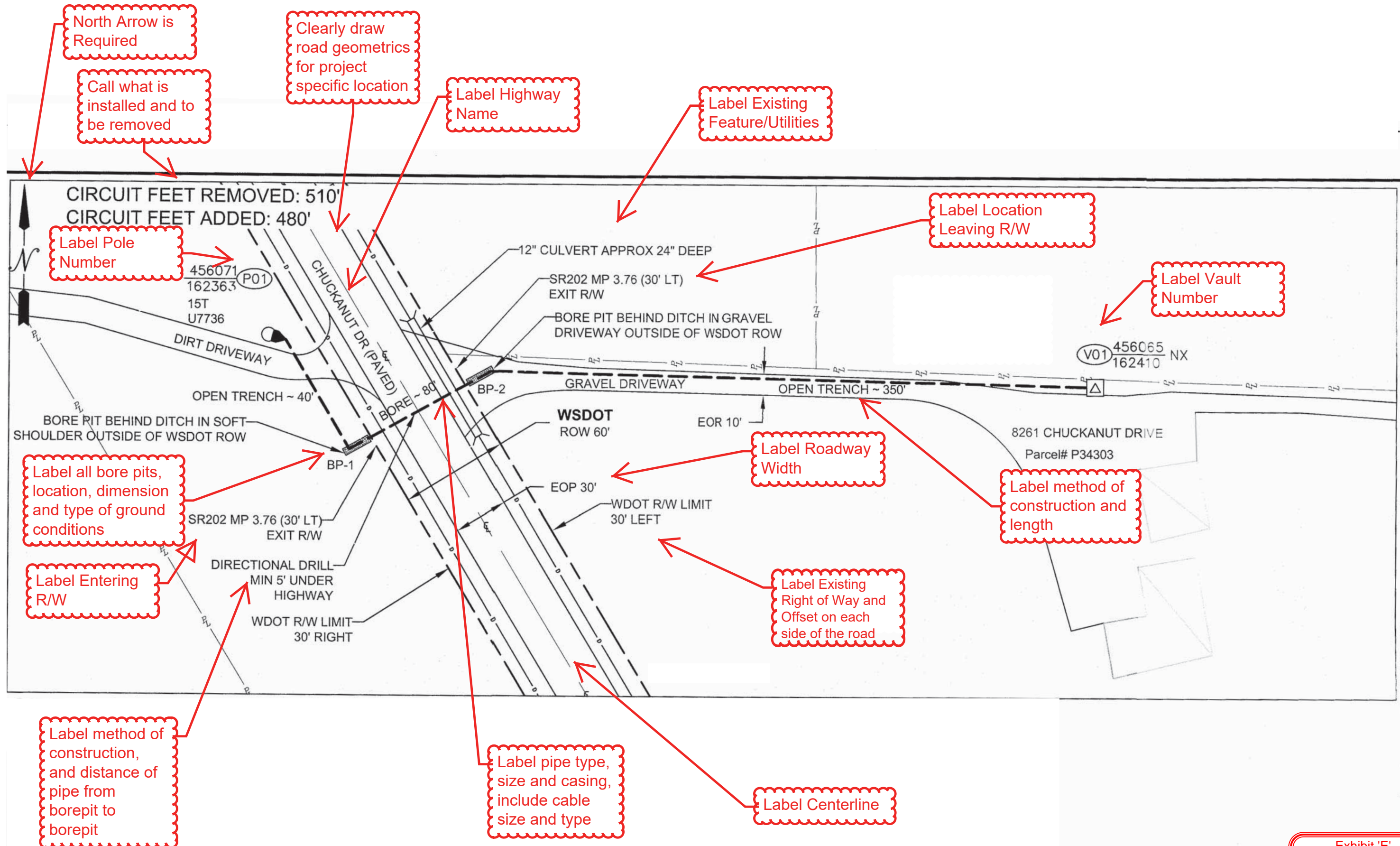


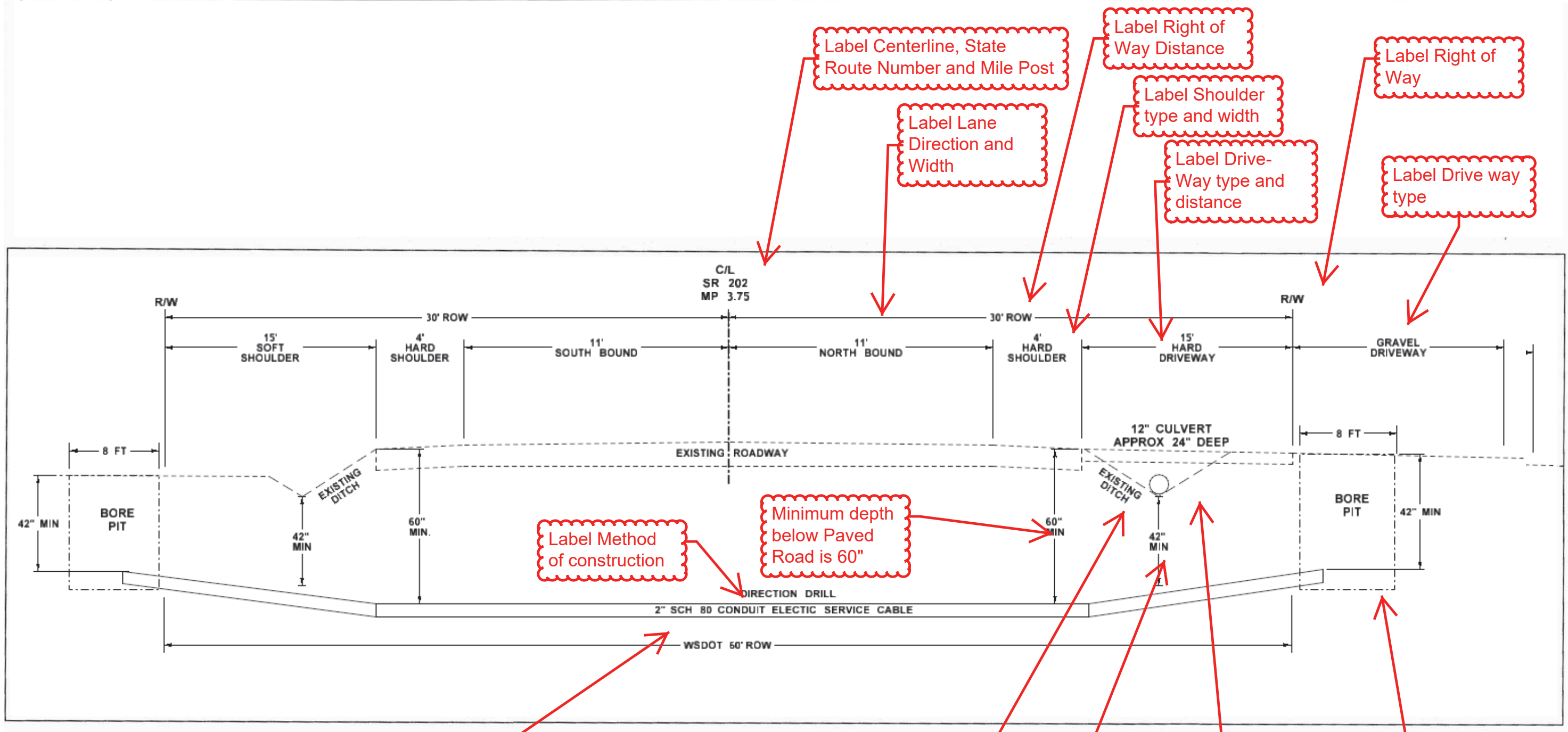
Label Work Location

Map two is zoomed in showing local streets and intersections

Vicinity Map	<p style="text-align: center;">SR 11 MP 3.75</p>
--------------	--

Exhibit 'D'
Vicinity Map
Example
Page 1 of 1





Label Centerline, State Route Number and Mile Post

Label Lane Direction and Width

Label Right of Way Distance

Label Shoulder type and width

Label Drive-Way type and distance

Label Right of Way

Label Drive way type

Label Method of construction

Minimum depth below Paved Road is 60"

Label type of pipe and type of cable

Draw in Ditch

Minimum Depth below ditch is 42"

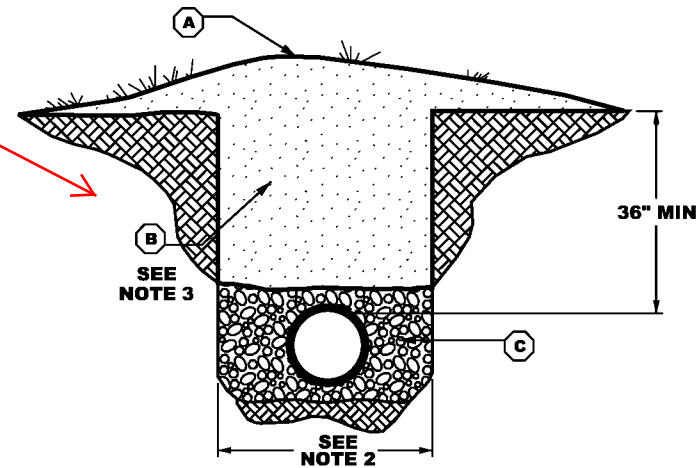
Draw in existing Utilities like Culverts and label depth if known

Draw Bore Pit and Label Dimension

DIRECTIONAL DRILL PROFILE

Exhibit 'F'
Profile View
Example
Page 1 of 1

Incorporate all details in Restoration plan



CROSS SECTION
NTS

LEGEND

- (A) SURFACE TREATMENT TO RESTORE EXISTING TO MATCH ADJACENT (SEEDING, BARK, ETC.).
- (B) NATIVE MATERIAL OR AS DIRECTED BY WSDOT.
- (C) BEDDING MATERIAL. BEDDING MATERIAL DEPTH OVER AND BENEATH PIPE CASING SHALL BE HALF THE DIAMETER OF PIPE CASING OR 6 INCHES, WHICHEVER IS LESS.

GENERAL NOTES

1. TRENCHING AND PIPE INSTALLATION SHALL MEET THE REQUIREMENTS OF WSDOT STANDARD SPECIFICATION 7-08.
2. MAXIMUM TRENCH WIDTH SHALL BE OUTSIDE CASING PIPE WIDTH PLUS 1 FOOT EITHER SIDE OF CASING PIPE.
3. COMPACTION SHALL BE METHOD "C" PER STANDARD SPECIFICATION SECTION 2-03.3 (14) C.
4. WHEN CONNECTING TO AN EXISTING FACILITY UNDER THE PAVEMENT, PAVEMENT RESTORATION MAY, AT THE DEPARTMENT'S DISCRETION, INCLUDE THE FULL LANE WIDTH AND ENCROACHED SHOULDER.
5. CASING PIPES SHALL EXTEND A MINIMUM OF SIX (6) FEET BEYOND THE TOE OF FILL SLOPES, BOTTOM OF DITCHLINE, OR OUTSIDE OF CURB.

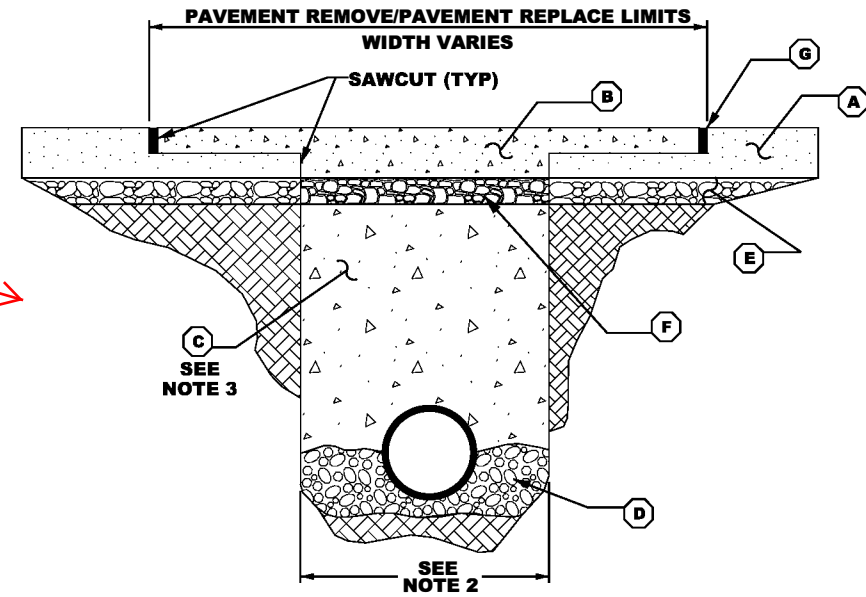
OPEN TRENCH DETAIL

Incorporate all notes in Restoration plan

Exhibit 'G'
Open Trench Detail
Example
Page 1 of 1

FILE NAME	I:\Tom\Accom Example\OPEN CUT AND OPEN TRENCH DETAIL.dgn										
TIME	9:24:44 AM		REGION NO.	STATE	FED.AID PROJ.NO.						PLAN REF NO
DATE	9/20/2018		10	WASH							
PLOTTED BY	chita		JOB NUMBER								SHEET
DESIGNED BY											OF
ENTERED BY											
CHECKED BY					CONTRACT NO.		LOCATION NO.				
PROJ. ENGR.											
REGIONAL ADM.			REVISION		DATE		BY				SHEETS
					P.E. STAMP BOX		DATE				
					P.E. STAMP BOX		DATE				

Incorporate all details in Restoration plan

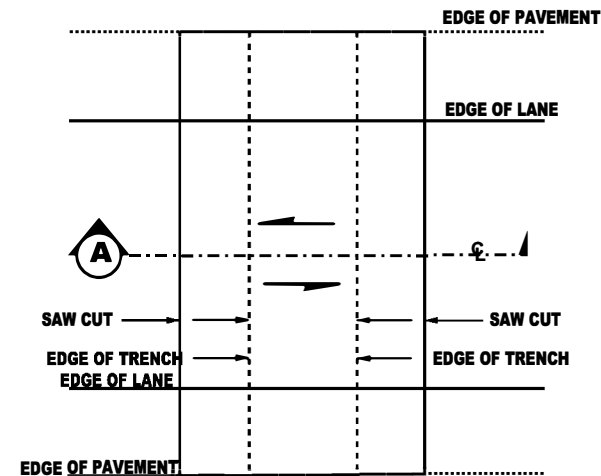


CROSS SECTION
NTS

LEGEND

- (A) EXISTING HMA (HOT MIX ASPHALT) OR PCCP (PORTLAND CEMENT CONCRETE PAVEMENT).
- (B) HMA CLASS ½ INCH OR PCCP: DEPTH AND MATERIAL SHALL MATCH EXISTING PAVEMENT. REMOVAL AND REPLACEMENT LIMITS OF PAVEMENT TO BE DETERMINED AT THE TIME OF UTILITY PERMIT/FRANCHISE REVIEW.
- (C) APPROVED BACKFILL MATERIAL OR CDF (CONTROL DENSITY BACKFILL) OR AS SPECIFIED BY WSDOT.
- (D) BEDDING MATERIAL DEPTH BENEATH THE PIPE/CASING SHALL BE SIX (6) INCHES. ADDITIONAL PIPE BEDDING SHALL BE PLACED EQUAL TO HALF THE DIAMETER OF THE PIPE/CASING OR SIX (6) INCHES, WHICHEVER IS LESS.
- (E) EXISTING CRUSHED SURFACING BASE COURSE.
- (F) CRUSHED SURFACING BASE COURSE DEPTH SHALL MATCH DEPTH OF EXISTING CRUSHED SURFACING BASE COURSE.
- (G) HMA BUTT JOINT REQUIRES TACK, SEAL, AND SAND. FOR PCCP, REFER TO GENERAL NOTE 5.

Incorporate all notes in Restoration plan



PLAN VIEW
NTS

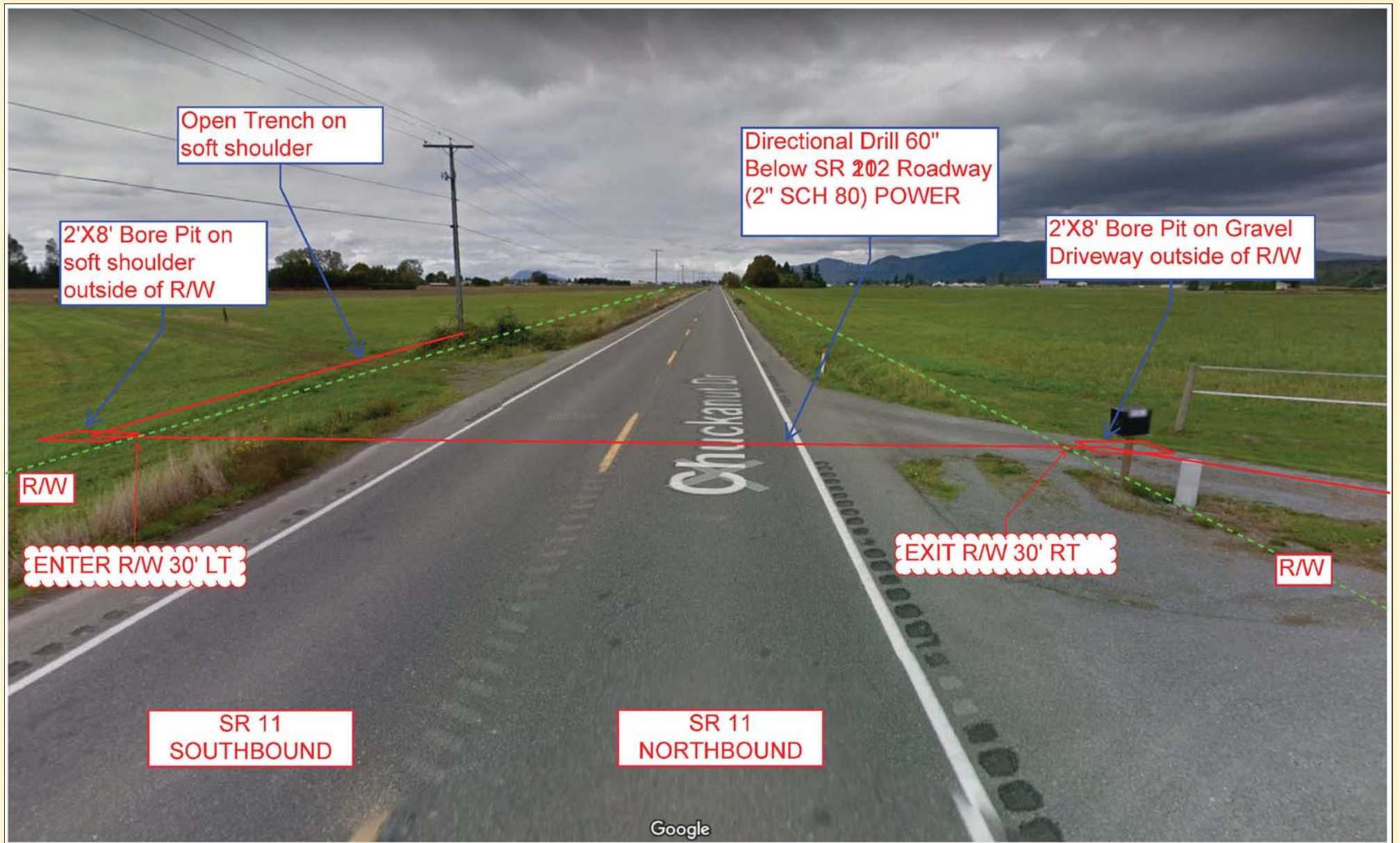
GENERAL NOTES

1. TRENCHING AND PIPE INSTALLATION SHALL MEET THE REQUIREMENTS OF WSDOT STANDARD SPECIFICATION 7-08.
2. MAXIMUM TRENCH WIDTH SHALL NOT EXCEED CASING/PIPE DIAMETER PLUS AN ADDITIONAL ONE (1) FOOT ON EITHER SIDE.
3. COMPACTION SHALL BE METHOD "C" PER STANDARD SPECIFICATION SECTION 2-03.3(14)C.
4. MINIMUM DEPTH SHALL BE SIXTY (60) INCHES FROM THE FINISHED SURFACE TO TOP OF CASING.
5. PCCP SHALL BE REPLACED TO THE NEXT PANEL JOINT IN EACH DIRECTION AS APPROVED BY WSDOT. ALL WORK SHALL BE AS SPECIFIED IN WSDOT STANDARD SPECIFICATION SECTION 5-01.3(4).
6. WHEN CONNECTING TO AN EXISTING FACILITY UNDER THE PAVEMENT, PAVEMENT RESTORATION MAY, AT THE DEPARTMENT'S DISCRETION, INCLUDE THE FULL LANE WIDTH AND ENCRoACHED SHOULDER.
7. CASING PIPES SHALL EXTEND A MINIMUM OF SIX (6) FEET BEYOND THE TOE OF FILL SLOPES, BOTTOM OF DITCHLINE, OR OUTSIDE OF CURB.
8. TACK ASPHALT PER WSDOT STANDARD SPECIFICATION 5-4.3(5)A.

OPEN CUT DETAIL

Exhibit 'H'
Open Cut Detail
Example
Page 1 of 1

FILE NAME	I:\Tom\Accom Example\OPEN CUT AND OPEN TRENCH DETAIL.dgn									
TIME	9:25:22 AM									
DATE	9/20/2018									
PLOTTED BY	chita									
DESIGNED BY										
ENTERED BY										
CHECKED BY										
PROJ. ENGR.										
REGIONAL ADM.										
REVISION										
DATE										
BY										
REGION NO.	10									
STATE	WASH									
FED.AID PROJ.NO.										
JOB NUMBER										
CONTRACT NO.										
LOCATION NO.										
DATE										
P.E. STAMP BOX										
DATE										
P.E. STAMP BOX										
PLAN REF NO										
SHEET										
OF										
SHEETS										



MP 3.75

Instructions to download Right of Way Plans -

Step 5: To Do the Search

Step 1: Check Right of Way Plans

Step 2: Select Right of Way Plans -Approved

Step 3: Select your Highway/ Freeway Number

Step 4: Enter the "Township, Range and Section" from a Thomas Guide or from geoportal webpage link below and check Town/Section In Layers Tab

<http://www.wsdot.wa.gov/data/tools/geoportal/>

1. Plan Search
To Search for a plan, enter search criteria
Click: "Search" to display search results
"Clear" to reset search criteria
"Preview" to show record count

WSDOT GeoPortal

2. Plan List

Page Size: 10 | Plan List | Highway List | Download

Search Criteria: Library: Right of Way Plans, Category: Right of Way Plans - Approved, Location: T24N,R5E,S8
Records Found: 1-3 out of 3 Sorted by Title

Detail	CAE	Library	Title	Contract	County	I,US,SR	Beg MP	End MP	Date	Dwr	Seg
17		R/W Plan	E. CHANNEL BRIDGE TO RICHARDS RD.		King	090	008.76	010.28	8/17/1965	V082	01
15		R/W Plan	MERCER IS: WEST SHORE TO EAST CHANNEL BR. SHOREWOOD DR. VIC. TO EAST CHANNEL BR.		King	090	007.49	008.76	12/18/1978	V079	05
6		R/W Plan	SOUTH BELLEVUE PARK AND RIDE LOT - SHEET 30		King				2/6/1976	V061	30

Step 6: Select the ROW plans that match your work location