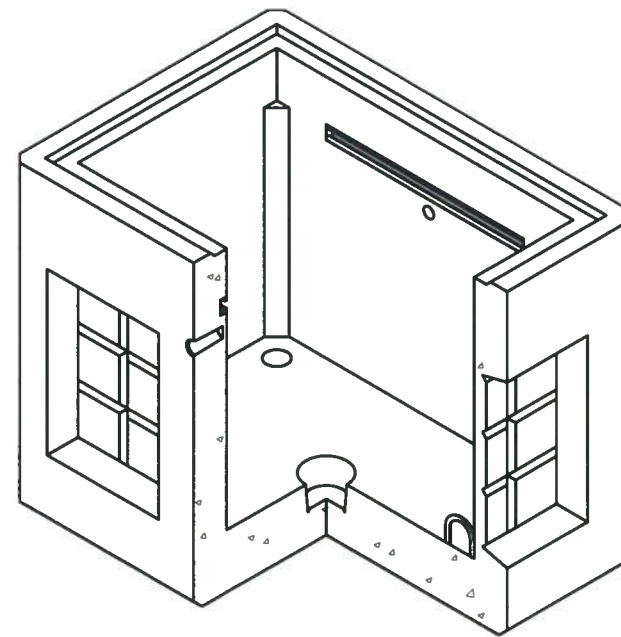
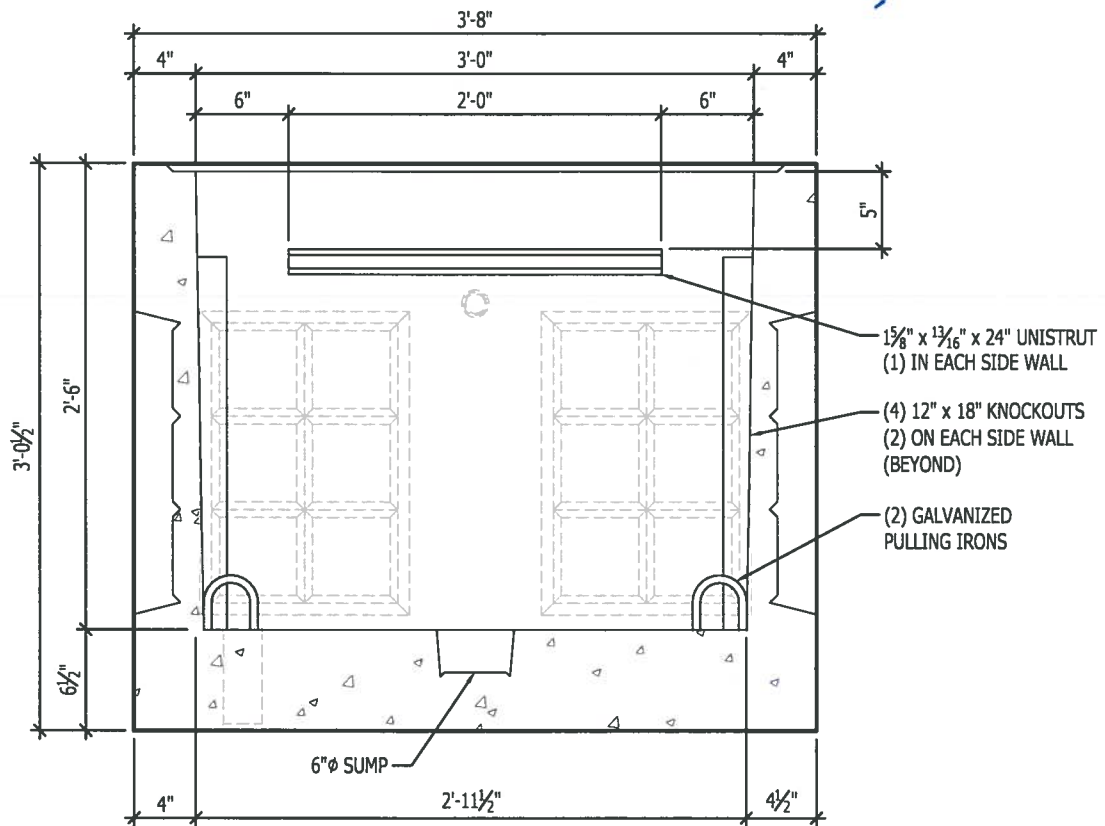


PLAN
SCALE: 1" = 1'-0"

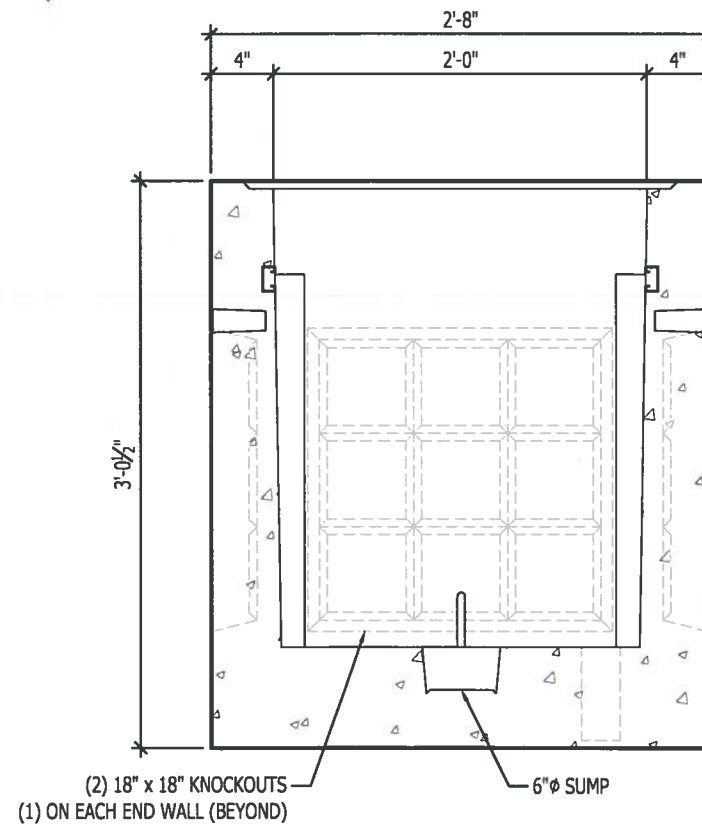
APPROVED
Washington State Department of Transportation
HQ Traffic Operations Office
BY: [Signature] DATE: 1/15/2020



ISOMETRIC
SCALE: 3/8" = 1'-0"



SECTION A-A
SCALE: 1" = 1'-0"



SECTION B-B
SCALE: 1" = 1'-0"

NOTES:

- CONCRETE: 28 DAY F'C = 5000 PSI
- REINFORCING:
 - REBAR: ASTM A615 OR A-706 GRADE 60
 - WWR: ASTM A1064 GRADE 65
- LOADING: PER ASTM C857
- TRAFFIC: AASHTO HS-20 (HL-93) WITH 16 KIP WHEEL LOAD
- TRAFFIC SURCHARGE: 80 PSF LATERAL TO 8' BELOW GRADE
- SOIL: 120 PCF WITH 0'-3' SOIL COVER
 - 40 PCF EQUIVALENT LATERAL FLUID PRESSURE (DRY)
 - 82 PCF EQUIVALENT LATERAL FLUID PRESSURE (SATURATED)
- WATER TABLE: 2' BELOW GRADE
- DESIGN: ACI 318-2014



THIS DRAWING HAS BEEN PREPARED FOR YOUR REVIEW AND APPROVAL

- APPROVED AS SUBMITTED
- APPROVED AS CORRECTED
- RESUBMIT

PLEASE CHECK THE APPROPRIATE BOX AND RETURN ONE SIGNED COPY SO THAT WE MAY PROCEED WITH PRODUCTION.

SIGNED _____ DATE _____
TITLE _____

THIS DRAWING IS INTENDED FOR THE USE OF THE INDIVIDUAL TO WHICH IT ADDRESSES AND CONTAINS INFORMATION THAT IS PRIVILEGED, CONFIDENTIAL AND EXEMPT FROM DISCLOSURE. IF YOU ARE NOT THE INTENDED RECIPIENT, PLEASE DO NOT DISSEMINATE, DISTRIBUTE OR COPY THIS BY E-MAIL OR OTHERWISE.

H² PRE-CAST INC.
CONCRETE PRODUCTS

(509) 884-6644 Phone (509) 884-4567 Fax

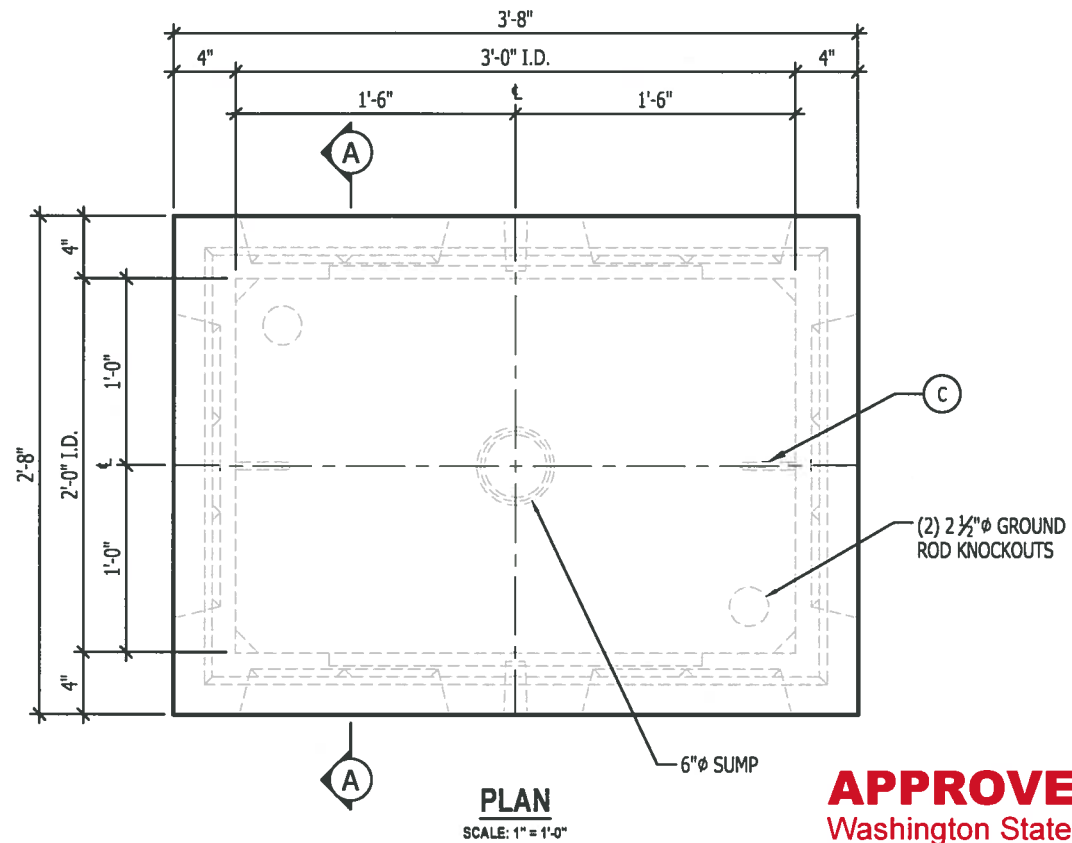
SALESMAN	NAME	DRAWN BY	RLW	DATE	DATE	DRAWING SCALE	AS SHOWN
----------	------	----------	-----	------	------	---------------	----------

PROJECT CLIENT

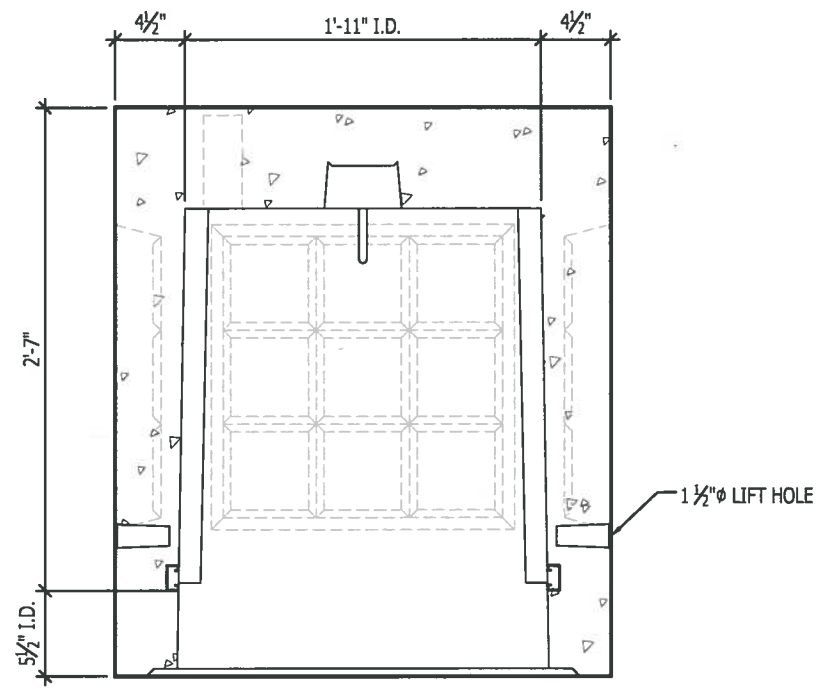
233 VAULT BASE - SUBMITTAL

REV. NO.	DESCRIPTION	DATE	TITAN #	SHEET	OF
----------	-------------	------	---------	-------	----

REV NO.	DESCRIPTION	DATE
-	-	-



PLAN
SCALE: 1" = 1'-0"



SECTION A-A
SCALE: 1" = 1'-0"



APPROVED
Washington State Department of Transportation
HQ Traffic Operations Office
BY: *[Signature]* DATE: 1/15/2020

BILL OF MATERIALS		
ITEM	QUANTITY	DESCRIPTION
A	0.45 YDS.	H2 #6 MIX - 5,000 PSI
B	19 LBS.	#3 REBAR
C	2 EA.	1/2" PULLING IRONS
D	2 EA.	1 5/8" X 1 3/16" X 24" GALV. UNISTRUT

PRODUCT WEIGHT	
PRODUCT	WEIGHT (APPROX.)
233 - VB	2,000 LBS.

THIS DRAWING HAS BEEN PREPARED FOR YOUR REVIEW AND APPROVAL

APPROVED AS SUBMITTED
 APPROVED AS CORRECTED
 RESUBMIT

PLEASE CHECK THE APPROPRIATE BOX AND RETURN ONE SIGNED COPY SO THAT WE MAY PROCEED WITH PRODUCTION.

SIGNED _____ DATE _____

TITLE _____

THIS DRAWING IS INTENDED FOR THE USE OF THE INDIVIDUAL TO WHICH IT ADDRESSES AND CONTAINS INFORMATION THAT IS PRIVILEGED, CONFIDENTIAL AND EXEMPT FROM DISCLOSURE. IF YOU ARE NOT THE INTENDED RECIPIENT, PLEASE DO NOT DISSEMINATE, DISTRIBUTE OR COPY THIS BY E-MAIL OR OTHERWISE.



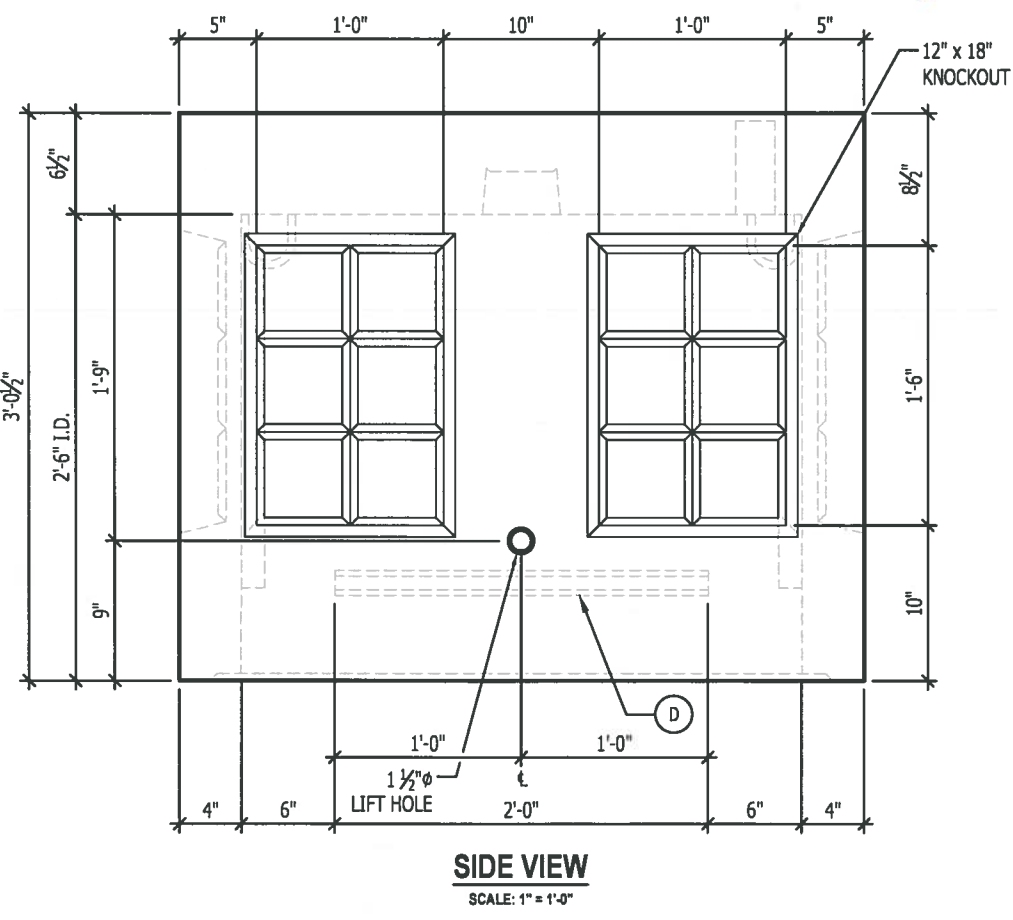
(509) 884-6644 Phone (509) 884-4567 Fax

SALESMAN	NAME	DRAWN BY	RLW	DATE	DATE	DRAWING SCALE	AS SHOWN
----------	------	----------	-----	------	------	---------------	----------

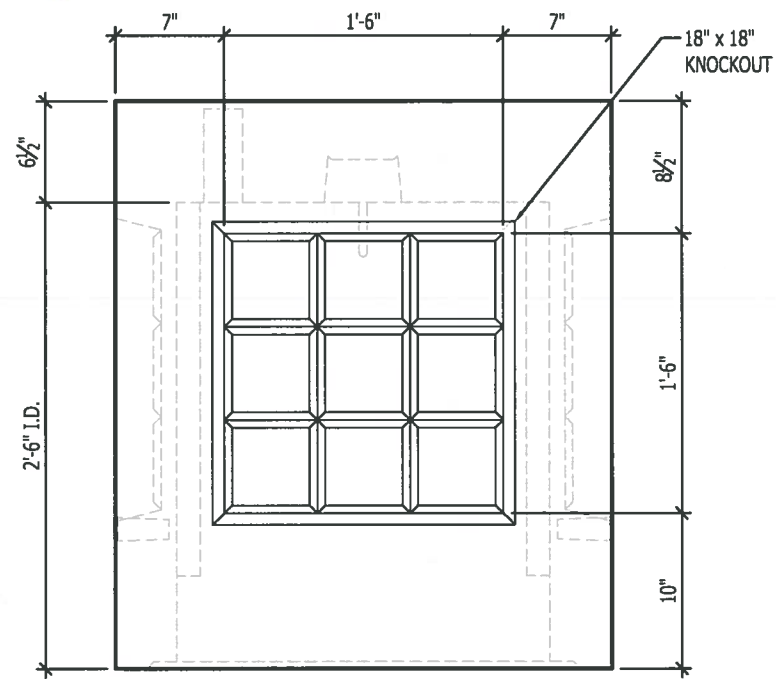
PROJECT CLIENT

233 VAULT BASE - PRODUCTION

TITAN #	TITAN #	SHEET	OF
---------	---------	-------	----

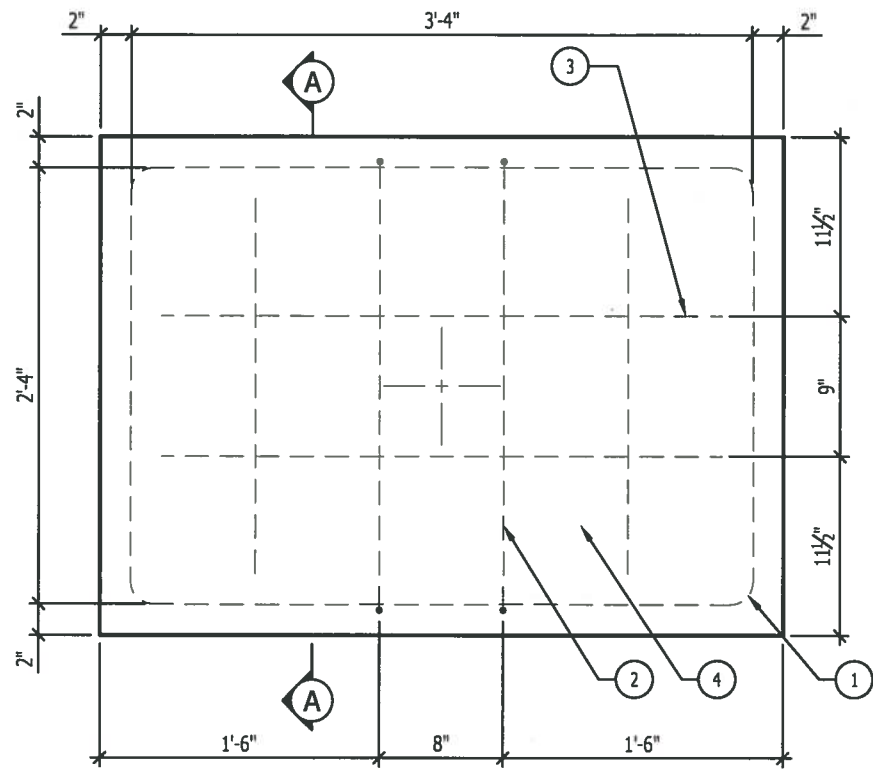


SIDE VIEW
SCALE: 1" = 1'-0"



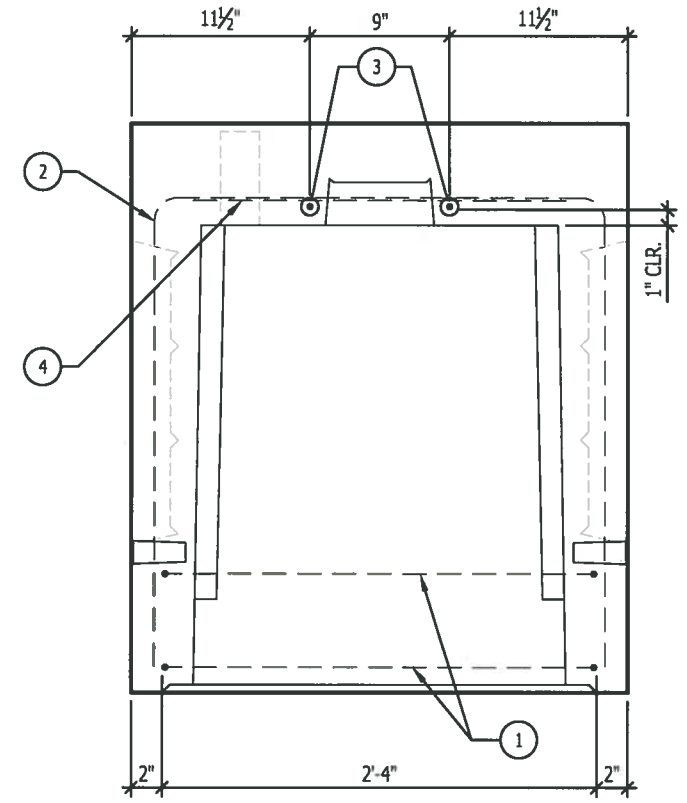
END VIEW
SCALE: 1" = 1'-0"

REV NO.	DESCRIPTION	DATE	TITAN #	TITAN #	SHEET	OF
-	-	-	-	-	-	-

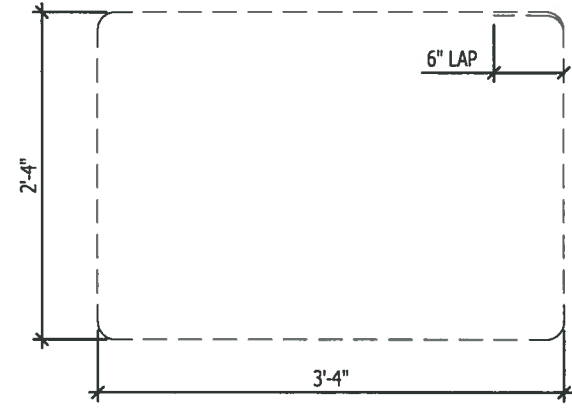


PLAN
SCALE: 1" = 1'-0"

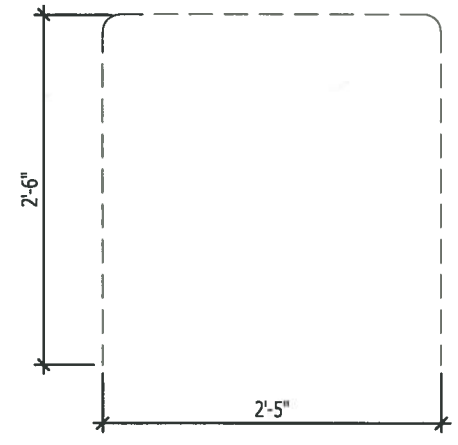
APPROVED
Washington State Department of Transportation
HQ Traffic Operations Office
BY: *[Signature]* DATE: 1/15/2020



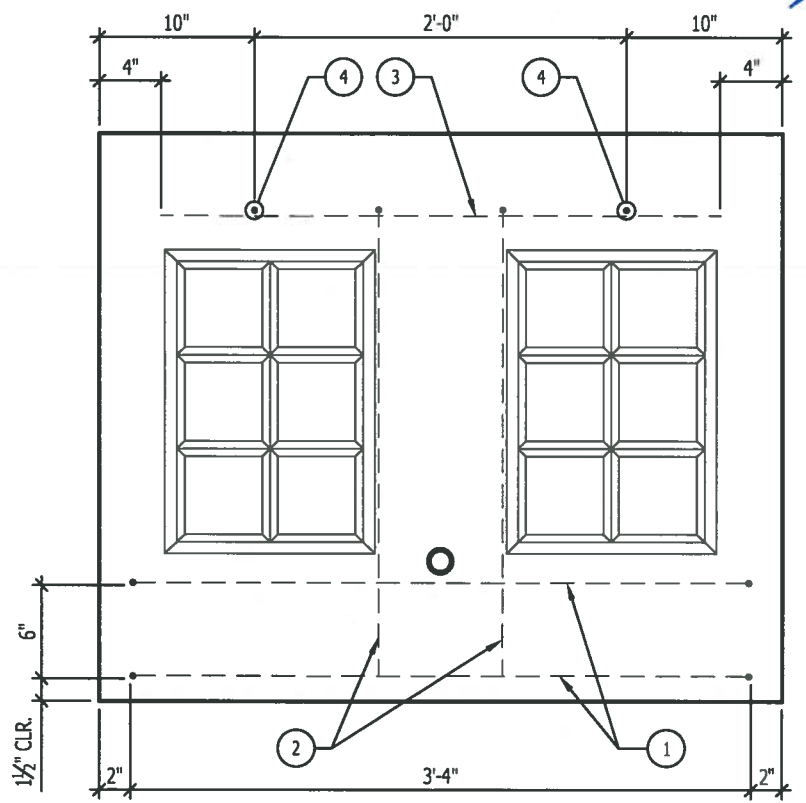
SECTION A-A
SCALE: 1" = 1'-0"



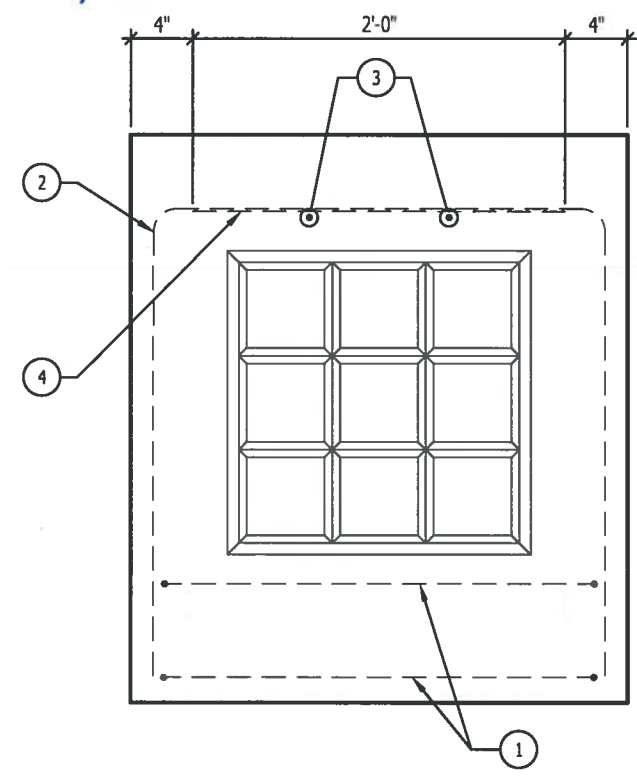
DETAIL ITEM #1
SCALE: 3/4" = 1'-0"



DETAIL ITEM #2
SCALE: 3/4" = 1'-0"



SIDE VIEW
SCALE: 1" = 1'-0"



END VIEW
SCALE: 1" = 1'-0"

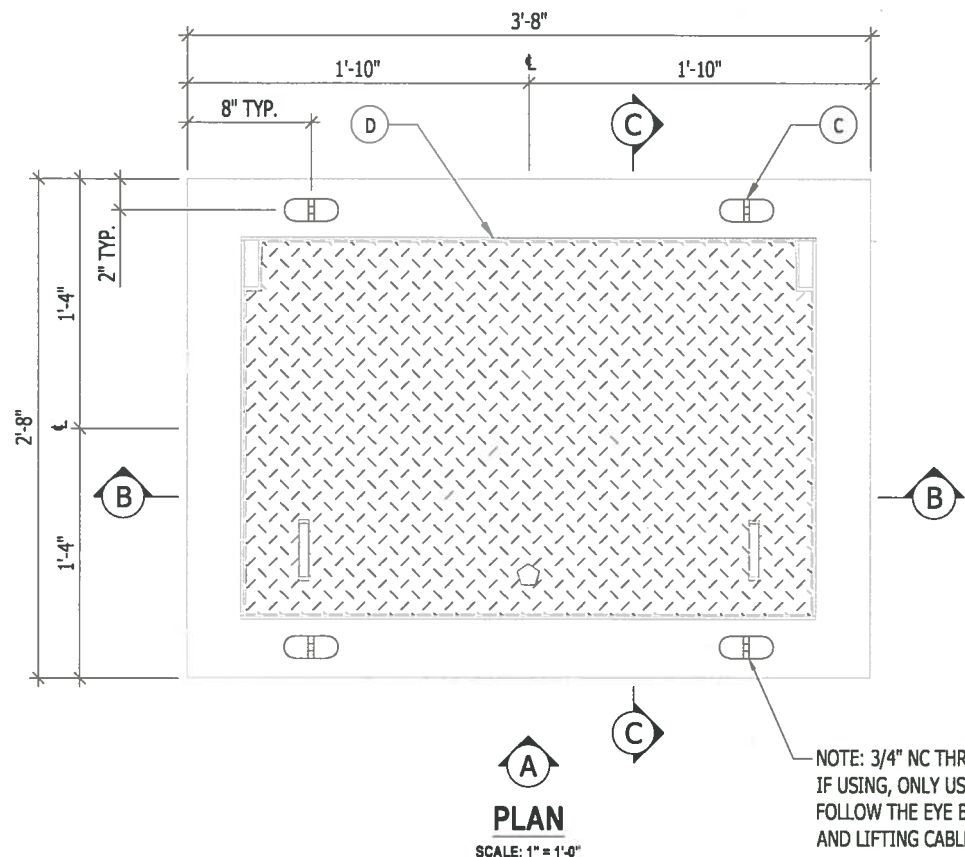
- NOTES:**
1. CONCRETE f'c = 5,000 PSI
 2. REINFORCING fy = 60,000 PSI



REINFORCING CUT LIST			
ITEM	QTY.	MATERIAL	DESCRIPTION
1	2	#3 REBAR	HOOP (SEE DETAIL)
2	2	#3 REBAR	U BAR (SEE DETAIL)
3	2	#3 REBAR	3'-0" / 36"
4	2	#3 REBAR	2'-0" / 24"

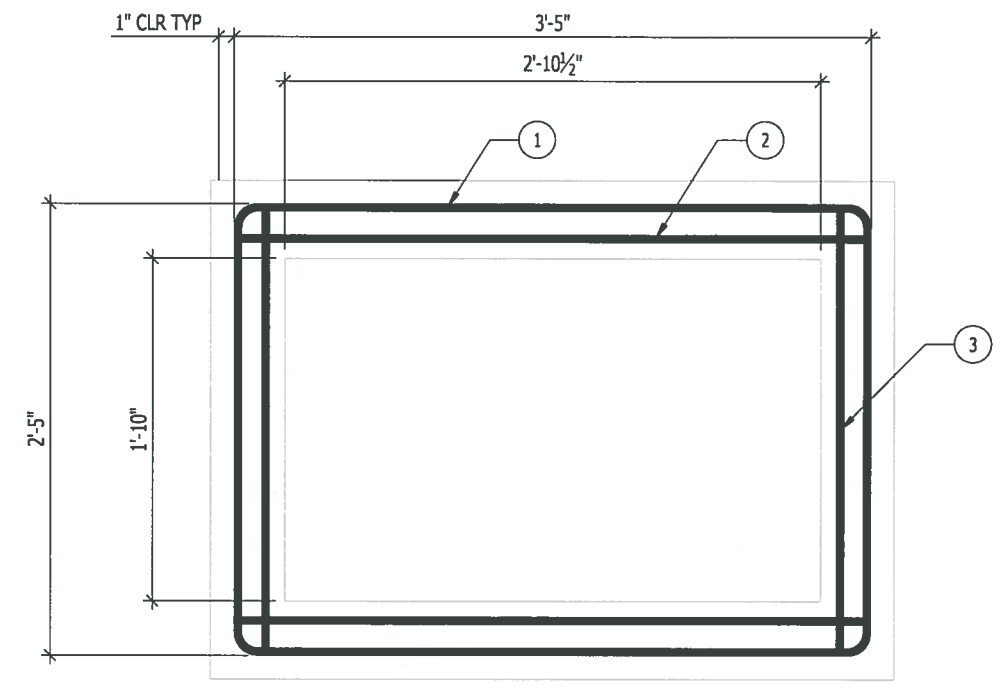
H² PRE-CAST INC.
CONCRETE PRODUCTS
(509) 884-6644 Phone (509) 884-4567 Fax

SALESMAN	DRAWN BY	DATE	DATE	DRAWING SCALE
NAME	RLW	DATE	DATE	AS SHOWN
PROJECT CLIENT				
233 VAULT BASE - REINFORCEMENT				
TITAN #	TITAN #	SHEET		OF

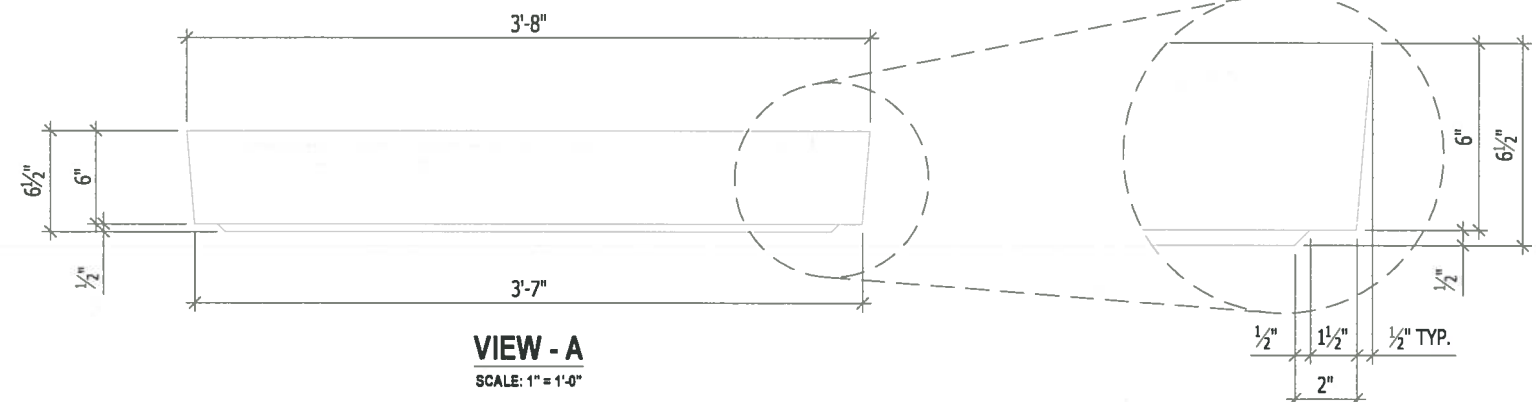


PLAN
SCALE: 1" = 1'-0"

NOTE: 3/4" NC THREADED FERRULE INSERT OPTIONAL. IF USING, ONLY USE 3/4" NC EYE BOLTS APPROVED FOR LOADS, FOLLOW THE EYE BOLT MANUFACTURER'S INSTRUCTIONS, AND LIFTING CABLES SHOULD NEVER BE SHORTER THAN 4'

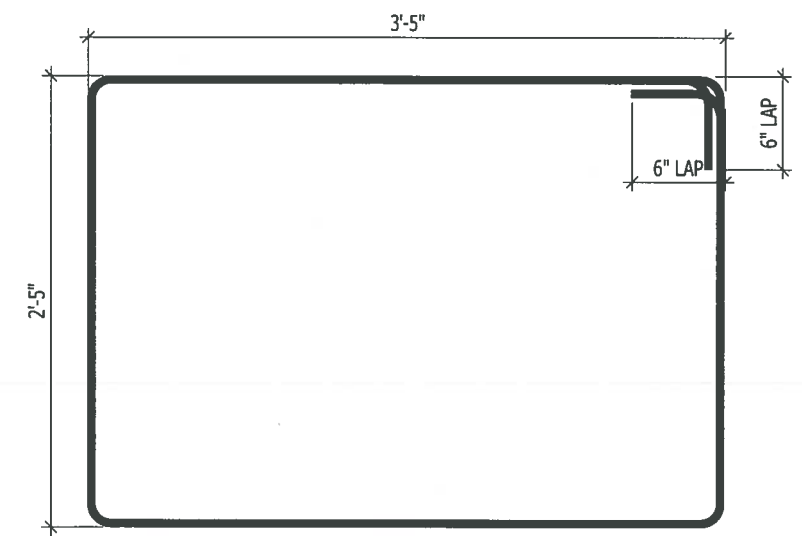


PLAN - REINFORCING
SCALE: 1" = 1'-0"

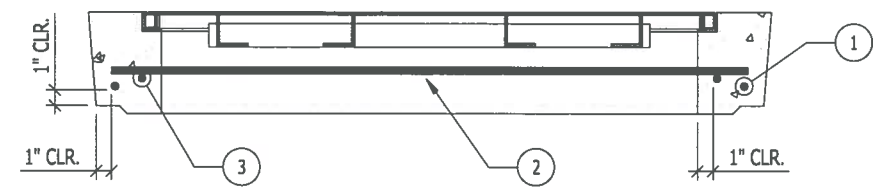


VIEW - A
SCALE: 1" = 1'-0"

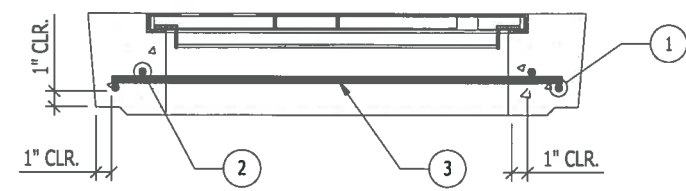
KEYWAY DETAIL
SCALE: 2" = 1'-0"



DETAIL ITEM 1
SCALE: 1" = 1'-0"



SECTION B-B
SCALE: 1" = 1'-0"



SECTION C-C
SCALE: 1" = 1'-0"



GENERAL NOTES:

CONCRETE: 28 DAY f_c = 5000 PSI
 REINFORCING:
 REBAR: ASTM A615 OR A706 GRADE 60
 WWR: ASTM A1064 GRADE 65
 LOADING: PER ASTM C857
 TRAFFIC: AASHTO HS-20 (HL-93) WITH 16 KIP WHEEL LOAD
 TRAFFIC SURCHARGE: 80 PSF LATERAL TO 8' BELOW GRADE
 SOIL: 120 PCF WITH 0'-3' SOIL COVER
 40 PCF EQUIVALENT LATERAL FLUID PRESSURE (DRY)
 82 PCF EQUIVALENT LATERAL FLUID PRESSURE (SATURATED)
 WATER TABLE: 2' BELOW GRADE
 DESIGN: ACI 318-2014

Note: Item D is Travis Industries 2436 Lid and Frame Assembly.

REINFORCING CUT LIST			
ITEM	QTY.	MATERIAL	DESCRIPTION
1	1	#4 REBAR	HOOP (SEE DETAIL)
2	2	#4 REBAR	3'-5" / 41"
3	2	#4 REBAR	2'-5" / 29"

BILL OF MATERIALS		
ITEM	QUANTITY.	DESCRIPTION
A	0.08 YDS.	H2 #6 MIX
B	17 LBS.	#4 REBAR
C	4 EA.	2-TON FLAT FOOT BURKE LIFTERS
D	1 EA.	24" x 36" ACCESS HATCH

PRODUCT WEIGHT	
PRODUCT	WEIGHT
230 - 2436	340 LBS. (CONCRETE ONLY)

THIS DRAWING HAS BEEN PREPARED FOR YOUR REVIEW AND APPROVAL

- APPROVED AS SUBMITTED
- APPROVED AS CORRECTED
- RESUBMIT

PLEASE CHECK THE APPROPRIATE BOX AND RETURN ONE SIGNED COPY SO THAT WE MAY PROCEED WITH PRODUCTION.

SIGNED _____ DATE _____
 TITLE _____

THIS DRAWING IS INTENDED FOR THE USE OF THE INDIVIDUAL TO WHICH IT ADDRESSES AND CONTAINS INFORMATION THAT IS PRIVILEGED, CONFIDENTIAL AND EXEMPT FROM DISCLOSURE. IF YOU ARE NOT THE INTENDED RECIPIENT, PLEASE DO NOT DISSEMINATE, DISTRIBUTE OR COPY THIS BY E-MAIL OR OTHERWISE

H² PRE-CAST INC.
 CONCRETE PRODUCTS
 (509) 884-6644 Phone (509) 884-4567 Fax

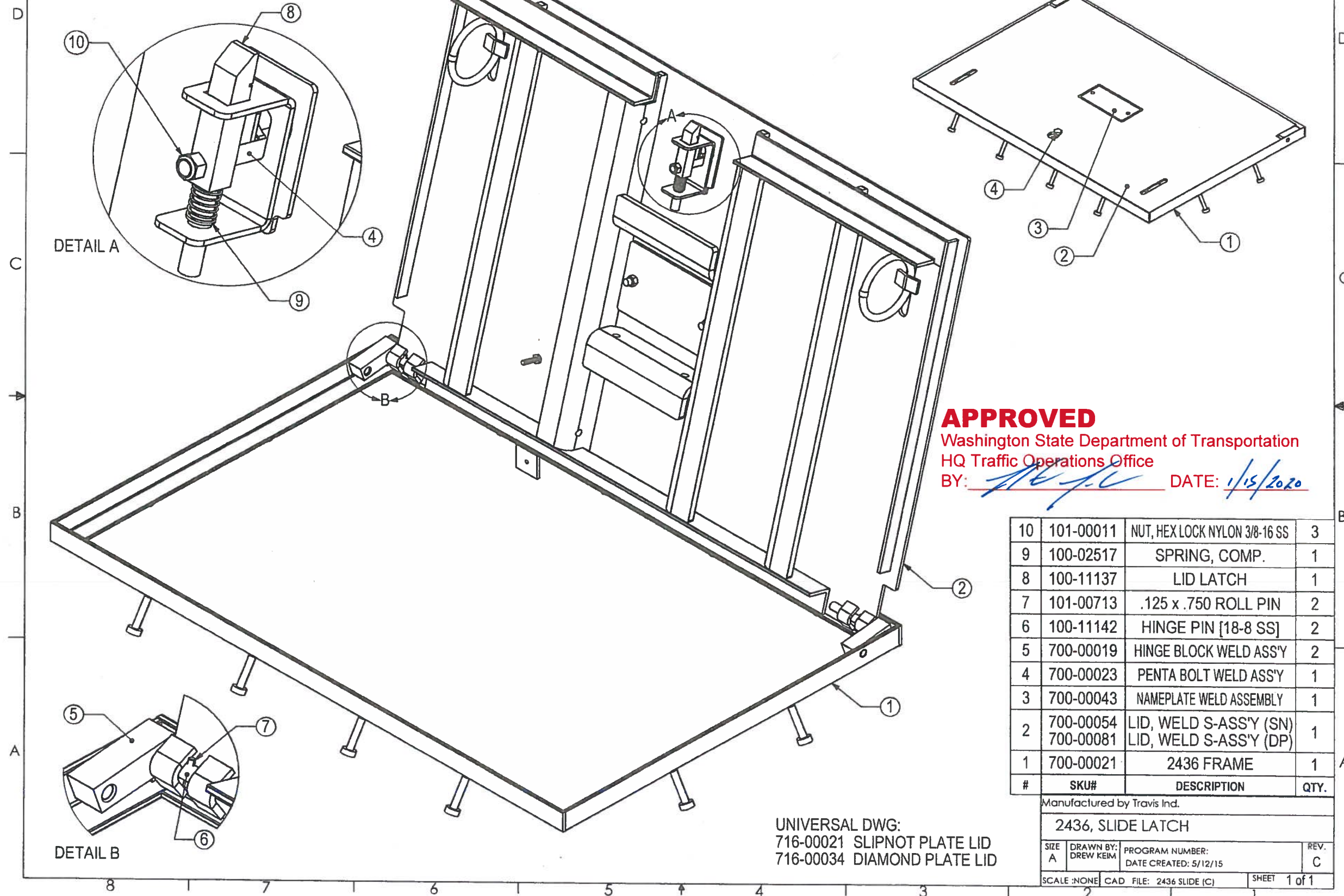
SALESMAN NAME: RLW/DAVID R DATE: 2-13-19 DRAWING SCALE: AS SHOWN

PROJECT CLIENT
 230 - 2436 LID

REV NO	DESCRIPTION	DATE	TITAN #	TITAN #	SHEET 1 OF 1
-	ADDED 3/4" NC FERRULE ANCHOR OPTION_DR	10/30/2019			

THE INFORMATION CONTAINED IN THIS DRAWING IS THE SOLE PROPERTY OF TRAVIS INDUSTRIES INC. ANY REPRODUCTION IN PART OR WHOLE WITHOUT THE WRITTEN PERMISSION OF TRAVIS INDUSTRIES INC. IS PROHIBITED.

REV	DESCRIPTION	DATE	INITIALS
C	700-00043 (PLANE STEEL) REPLACED 700-00058 (SLIPNOT)	5/12/17	DK



APPROVED
 Washington State Department of Transportation
 HQ Traffic Operations Office
 BY: [Signature] DATE: 1/15/2020

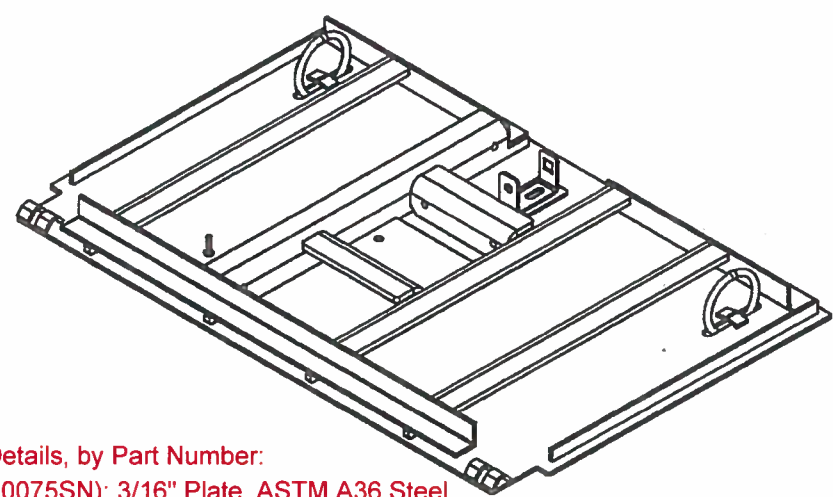
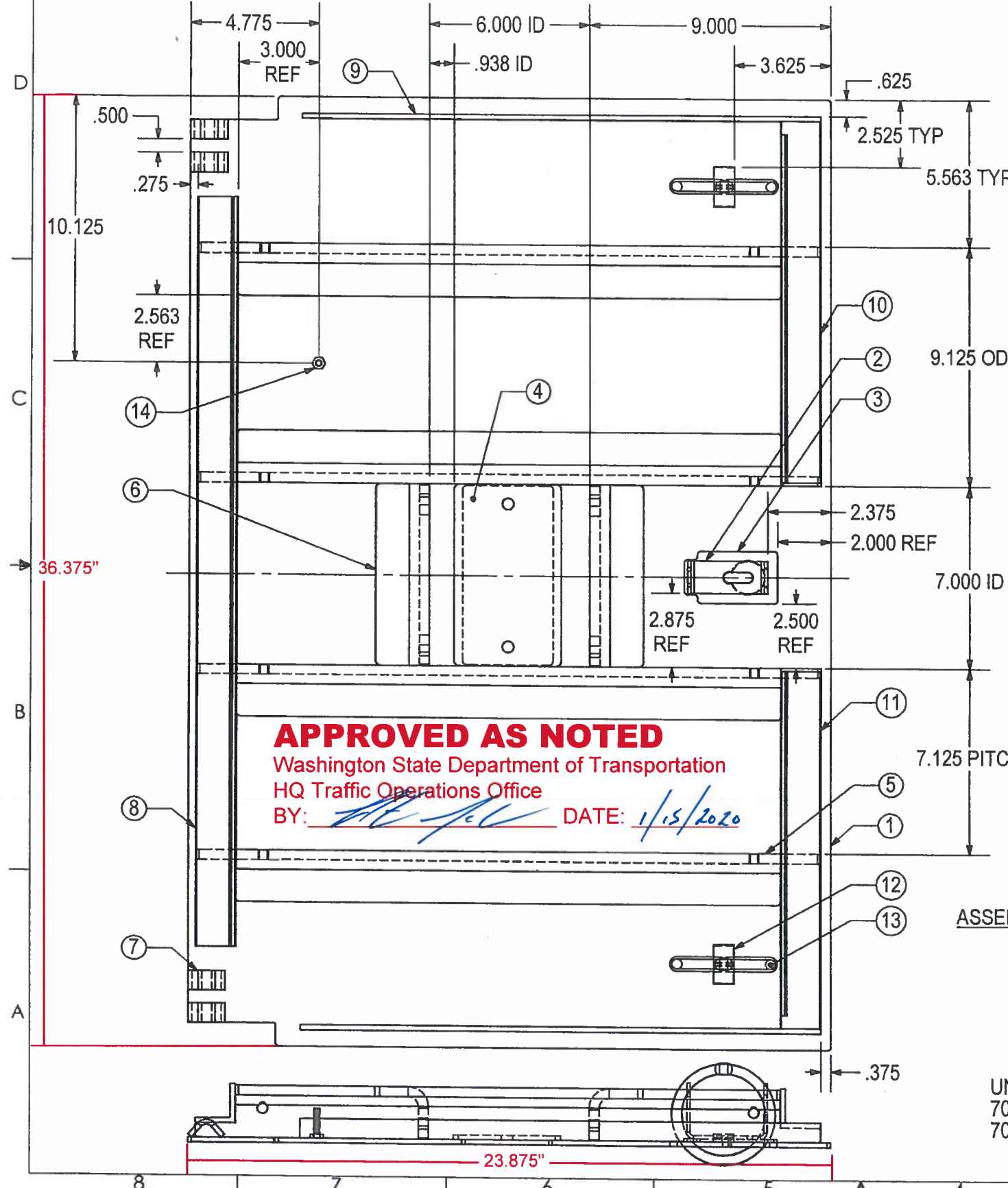
10	101-00011	NUT, HEX LOCK NYLON 3/8-16 SS	3
9	100-02517	SPRING, COMP.	1
8	100-11137	LID LATCH	1
7	101-00713	.125 x .750 ROLL PIN	2
6	100-11142	HINGE PIN [18-8 SS]	2
5	700-00019	HINGE BLOCK WELD ASS'Y	2
4	700-00023	PENTA BOLT WELD ASS'Y	1
3	700-00043	NAMEPLATE WELD ASSEMBLY	1
2	700-00054 700-00081	LID, WELD S-ASS'Y (SN) LID, WELD S-ASS'Y (DP)	1
1	700-00021	2436 FRAME	1
#	SKU#	DESCRIPTION	QTY.

UNIVERSAL DWG:
 716-00021 SLIPNOT PLATE LID
 716-00034 DIAMOND PLATE LID

Manufactured by Travis Ind.			
2436, SLIDE LATCH			
SIZE A	DRAWN BY: DREW KEIM	PROGRAM NUMBER: DATE CREATED: 5/12/15	REV. C
SCALE: NONE	CAD FILE: 2436 SLIDE (C)	SHEET 1 of 1	

THE INFORMATION CONTAINED IN THIS DRAWING IS THE SOLE PROPERTY OF TRAVIS INDUSTRIES INC. ANY REPRODUCTION IN PART OR WHOLE WITHOUT THE WRITTEN PERMISSION OF TRAVIS INDUSTRIES INC. IS PROHIBITED.

REV	DESCRIPTION	DATE	INITIALS
B	ADDED 700-00081, DP LID SKU. ADDED UNIVERSAL DRAWING NOTE. RENAMED CAD FILE; WAS 700-00054A.	5/10/16	DK



Material Details, by Part Number:
 1A (716-S0075SN): 3/16" Plate, ASTM A36 Steel.
 1B (716-S0075DP): 3/16" Plate, ASTM A786 Steel.
 4 (716-S0005): 6.5" x 3" x 3/16" Plate, ASTM A36 Steel.
 5 (716-S0004) and 6 (716-S0003): 1.5" x 1.5" x 0.375" Angle, ASTM A36 Steel.
 8 (716-F0006): 1.25" x 1.25" x 0.188" Angle, ASTM A36 Steel.
 9 (716-F0007): 19" x 0.75" x 0.188" Flat, ASTM A36 Steel.
 10 (716-F0008) and 11 (716-F0009): 1.25" x 1.25" x 0.188" Angle, ASTM A36 Steel.
 12 (716-F0061): 0.375" dia. Bar, ASTM A36 Steel or ASTM A1011 Grade CS or SS Steel.
 13 (100-02953): 1.5" x 0.75" x 0.188" ASTM A36 Steel or ASTM A1011 Grade CS or SS Steel.

APPROVED AS NOTED
 Washington State Department of Transportation
 HQ Traffic Operations Office
 BY: *[Signature]* DATE: 1/15/2020

ASSEMBLY DETAIL

UNIVERSAL DWG:
 700-00054 SLIPNOT PLATE LID
 700-00081 DIAMOND PLATE LID

ITEM#	SKU#	DESCRIPTION	QTY.
14	101-00272	Ø1/4-20 X 1" HHCS (316SS)	1
13	100-02953	LID LIFTING RING	2
12	716-F0061	RING RETAINER	2
11	716-F0009	LID SUPPORT, FRONT RIGHT	1
10	716-F0008	LID SUPPORT, FRONT LEFT	1
9	716-F0007	RIB, SIDE	2
8	716-F0006	LID SUPPORT, REAR	1
7	716-F0004	RETAINER, HINGE PIN	4
6	716-S0003	LID SUPPORT, CENTER	2
5	716-S0004	LID SUPPORT, SIDES	4
4	716-S0005	NAME PLATE MOUNT	1
3	716-S0016	LATCH SPACER	1
2	716-S0018	LATCH BRACKET	1
1	716-S0075DP	LID, 2436 SLIDE (DP)	1
	716-S0075SN	LID, 2436 SLIDE (SN)	1

Manufactured by Travis Ind.

LID, WELD S-ASS'Y (2436 SLIDE)

SIZE A	DRAWN BY: DREW KEIM	PROGRAM NUMBER:	REV. B
		DATE CREATED: 5/12/15	
SCALE: NONE	CAD FILE: LID, 2436 SLIDE (B)	SHEET 1 of 2	

THE INFORMATION CONTAINED IN THIS DRAWING IS THE SOLE PROPERTY OF TRAVIS INDUSTRIES INC. ANY REPRODUCTION IN PART OR WHOLE WITHOUT THE WRITTEN PERMISSION OF TRAVIS INDUSTRIES INC. IS PROHIBITED.

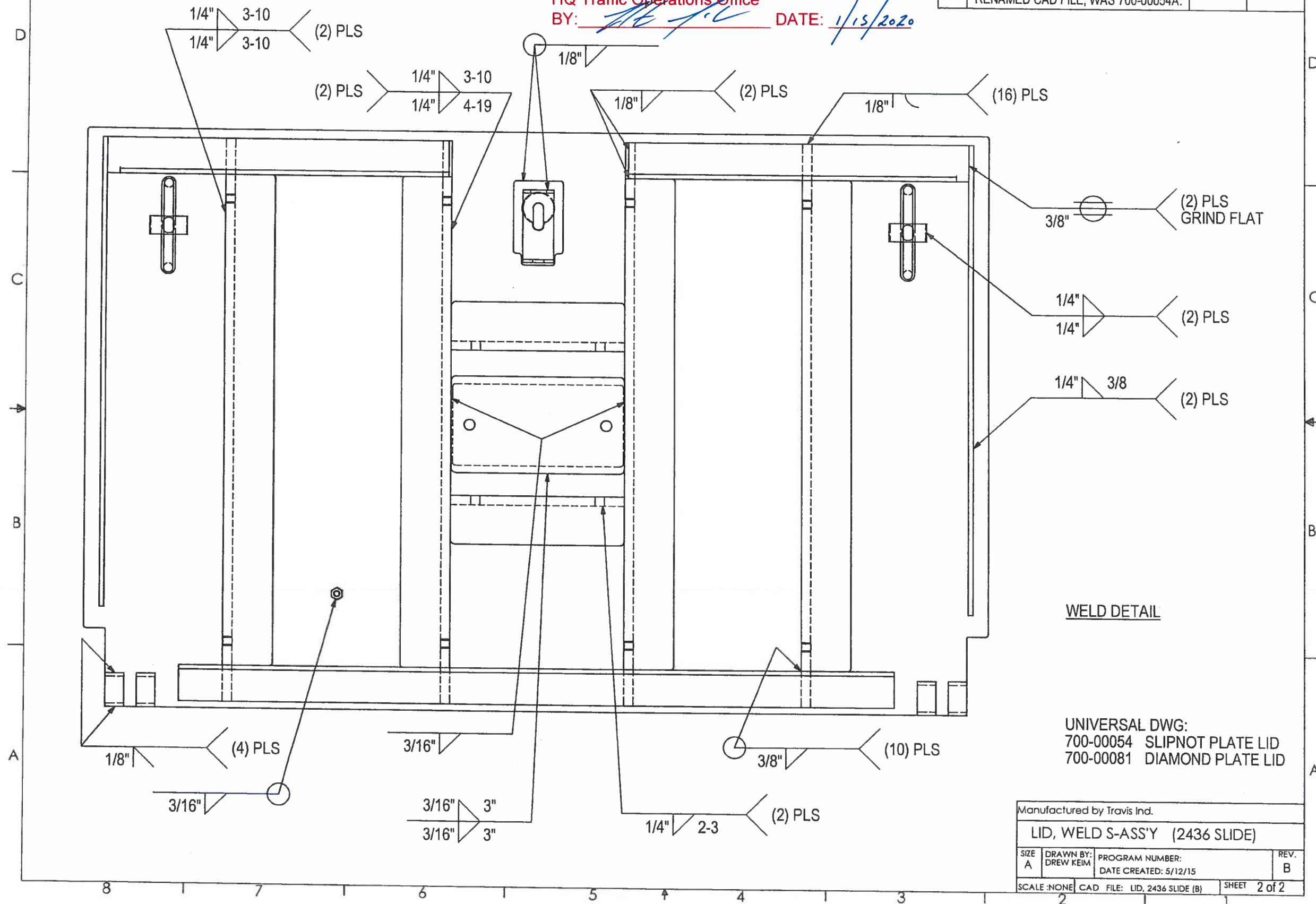
APPROVED

Washington State Department of Transportation

HQ Traffic Operations Office

BY: *[Signature]* DATE: 1/15/2020

REV	DESCRIPTION	DATE	INITIALS
B	ADDED 700-00081, DP LID SKU. ADDED UNIVERSAL DRAWING NOTE. RENAMED CAD FILE; WAS 700-00054A.	5/10/16	DK



WELD DETAIL

UNIVERSAL DWG:
700-00054 SLIPNOT PLATE LID
700-00081 DIAMOND PLATE LID

Manufactured by Travis Ind.			
LID, WELD S-ASS'Y (2436 SLIDE)			
SIZE A	DRAWN BY: DREW KEIM	PROGRAM NUMBER: DATE CREATED: 5/12/15	REV. B
SCALE: NONE	CAD FILE: LID, 2436 SLIDE (B)	SHEET 2 of 2	