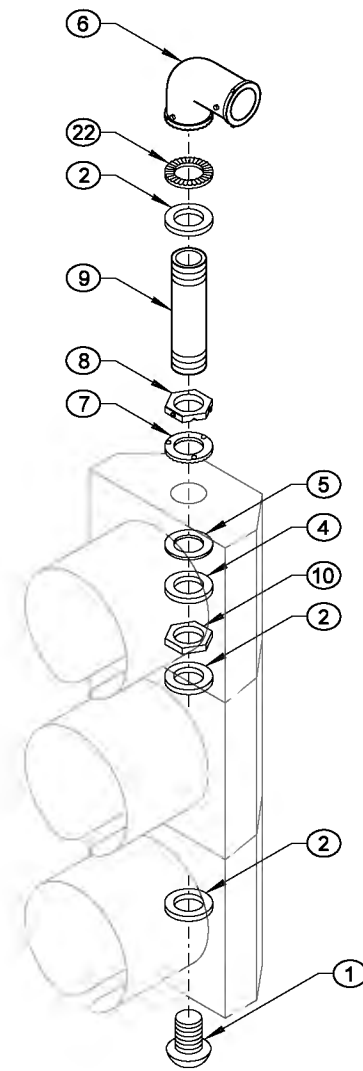
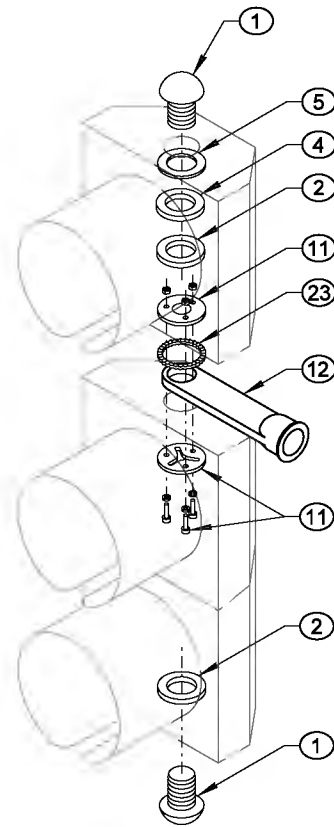


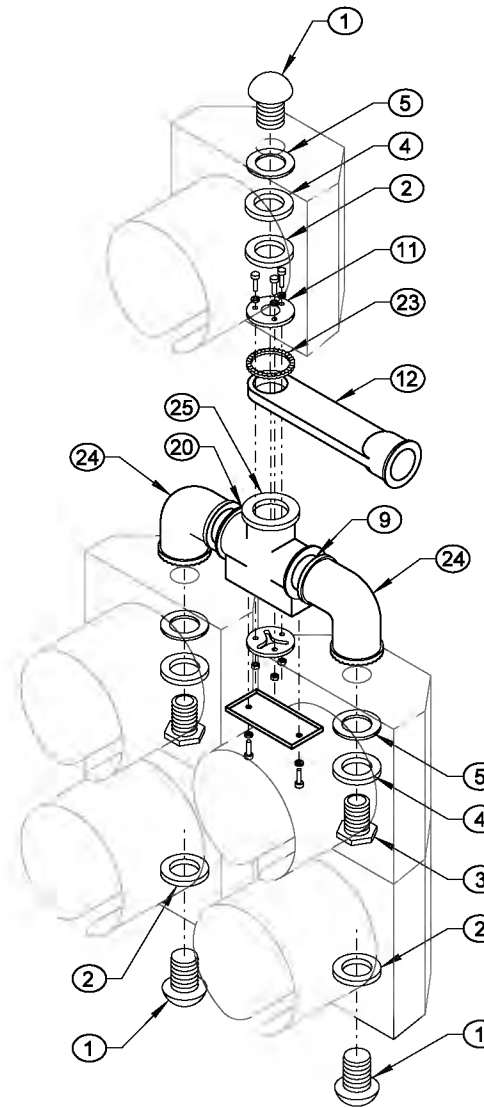
**ARM MOUNT  
TYPE L**



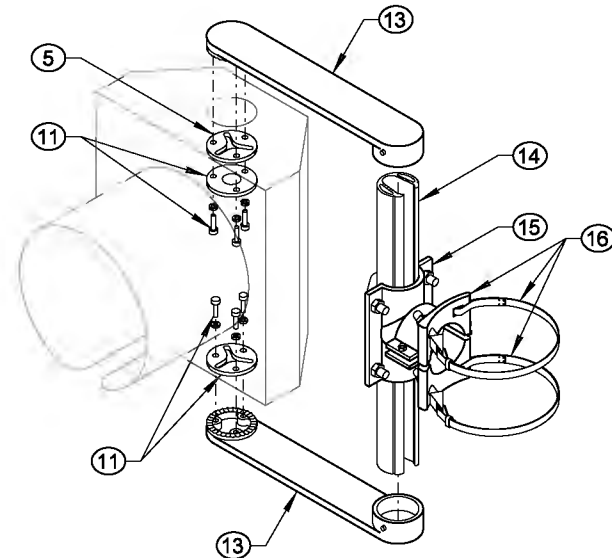
**ARM MOUNT  
TYPE LE**



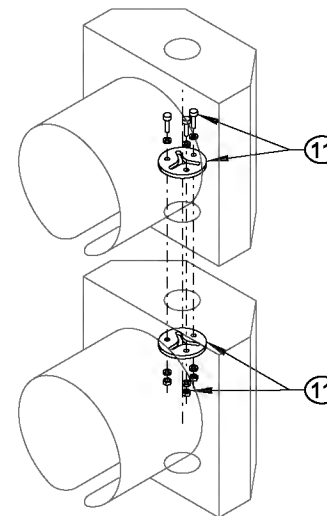
**ARM MOUNT  
TYPE M**



**ARM MOUNT  
TYPE M-5S  
(TYPE M WITH  
5-SECTION HEAD)**



**ARM MOUNT  
TYPE N**



**HOUSING FIXTURE  
CONNECTION DETAIL**

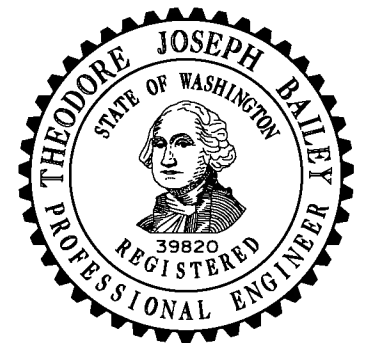
**KEY**

- ① END CAP
- ② 1 1/2" (IN) DIAM. CONDUIT LOCKNUT
- ③ 1 1/2" (IN) DIAM. CHASE NIPPLE
- ④ STEEL WASHER
- ⑤ NEOPRENE GASKET
- ⑥ BRONZE SERRATED ELL FITTING WITH:
  - 3/8" (IN) STAINLESS STEEL THROUGH BOLT AND NUTS
  - THREE STAINLESS STEEL SET SCREWS AT SLIPFITTER CONNECTION
  - THREE ALLEN HEAD STAINLESS STEEL SET SCREWS AT CONDUIT NIPPLE CONNECTION
- ⑦ SERRATED RING WITH PINS
- ⑧ HEX LOCKNUT WITH:
  - TWO ALLEN HEAD STAINLESS STEEL SET SCREWS
  - PIN RECEPTACLES
- ⑨ 1 1/2" (IN) DIAM. CONDUIT NIPPLE
- ⑩ 1 1/2" (IN) DIAM. HEX LOCKNUT
- ⑪ MOUNTING ASSEMBLY
- ⑫ BRONZE ELEVATOR PLUMBIZER WITH 3/8" (IN) STAINLESS STEEL THROUGH BOLT, WASHERS, AND TWO NUTS
- ⑬ ALUMINUM ARM WITH SET SCREW
- ⑭ SLOTTED TUBE WITH CLOSURE STRIP
- ⑮ 2 1/2" (IN) I.D. MIN. TUBE CLAMP
- ⑯ INTERNALLY THREADED CLAMP ASSEMBLY WITH:
  - TWO SET SCREWS
  - 1/2" (IN) × 0.045" (IN) STAINLESS STEEL BANDS
  - 7/16" (IN) SCREW BUCKLES WITH SWIVELS, NUTS, AND WASHERS
  - BAND CLIPS WITH ALLEN HEAD STAINLESS STEEL SET SCREWS
- ⑰ BRONZE MESSENGER HANGER WITH:
  - 1/2" (IN) DIAM. J-BOLTS
  - CABLE LOCK BAR
  - RIVET
  - COTTER KEY
- ⑱ BRONZE INTERNALLY THREADED WIRE ENTRANCE WITH:
  - BUSHING INSERT OR RUBBER GROMMET
  - ALLEN HEAD STAINLESS STEEL SET SCREW
- ⑲ BRONZE BALANCE ADJUSTER (WHERE REQUIRED)
- ⑳ MULTI-HEAD MOUNTING ASSEMBLY
- ㉑ LOWER ARM ASSEMBLY
- ㉒ SERRATED RING WITH NO PINS
- ㉓ SERRATED WASHER
- ㉔ 1 1/2" (IN) DIAM. SERRATED OR FLANGED ELBOW
- ㉕ CENTER SUPPORT WITH 1 1/2" (IN) DIAM. HUBS WITH COVER AND GASKET
- ㉖ 1 1/2" (IN) DIAM. SERRATED COUPLING
- ㉗ 1 1/2" (IN) BREAKAWAY TETHER ASSEMBLY WITH OPTIONAL EXTENDER BAR
- ㉘ SERRATED CROSS

**NOTES**

1. Type M mounting shall have "O" ring groove and seal on top and bottom of signal attachment.
2. Type M mounting for conventional heads shall have a 2" (in) diameter opening at the signal attachment.
3. Type M mounting for optically programmed heads shall have a 3 1/2" (in) diameter opening at the signal attachment.
4. Type N mounting with optically programmed heads shall be installed with 14" (in) nominal arms.
5. See **Standard Plan J-75.30** for tether wire and backplate requirements.
6. Apply bead of silicone around the perimeter of all top end cap openings prior to installation of the end cap assembly.
7. See **Standard Specification 9-29.16** for backplate requirements. Where required, prismatic sheeting shall be applied in accordance with the manufacturer's recommendations. The application surface of the backplate shall be cleaned, degreased with isopropyl alcohol, and dried prior to application of the sheeting.
8. Drill a 1/4" (in) drain hole in the bottom of each signal assembly. When signal display assembly is mounted horizontally, drill a 1/4" (in) drain hole at the lowest point of each section of the signal assembly.

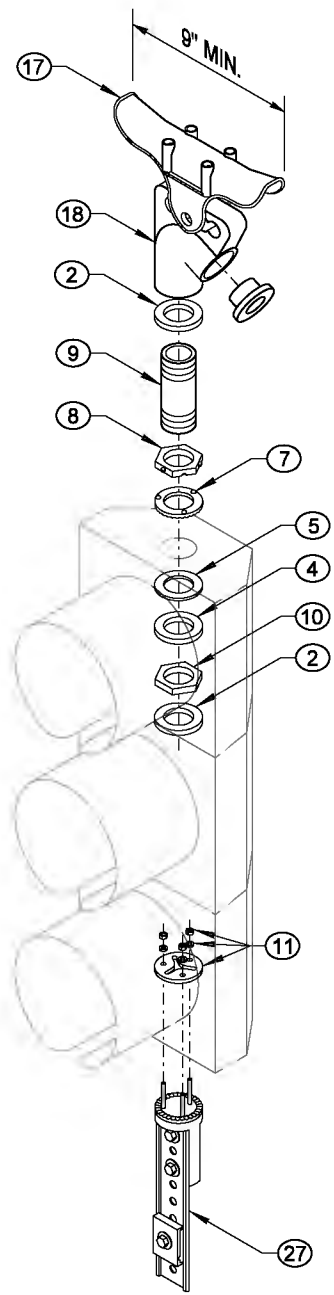
**NOTE: BACKPLATES NOT SHOWN FOR CLARITY**



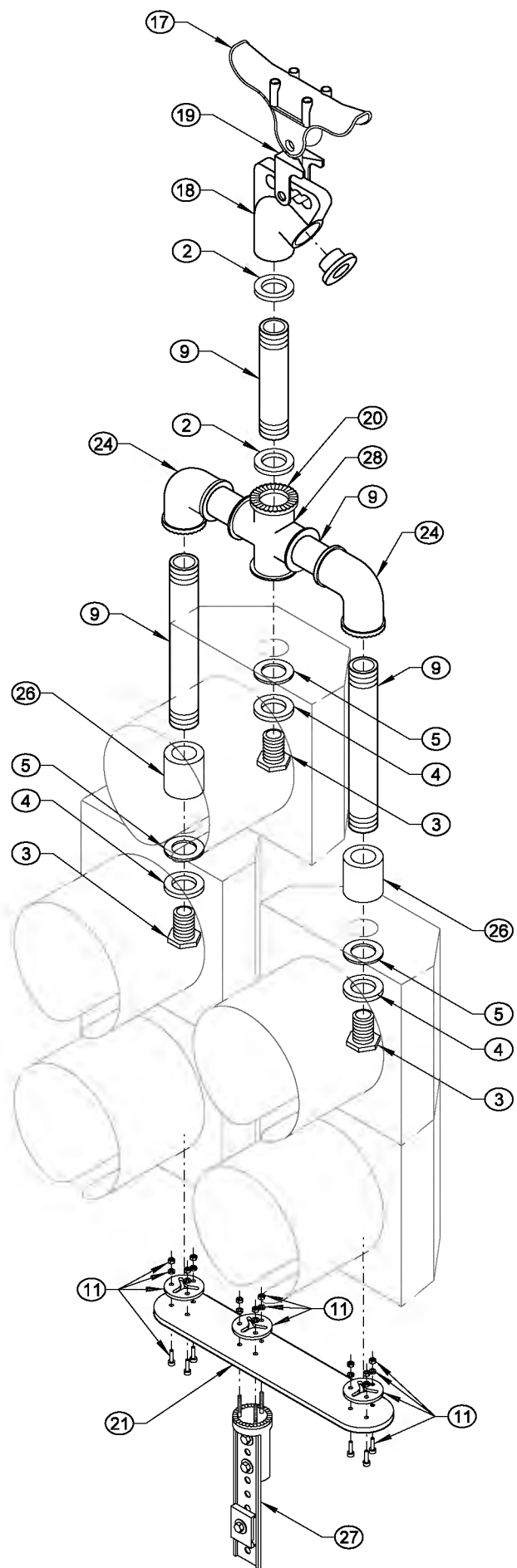
**SIGNAL HEAD MOUNTING  
DETAILS ~ MAST ARM AND  
SPAN WIRE MOUNTINGS  
STANDARD PLAN J-75.20-01**

SHEET 1 OF 2 SHEETS

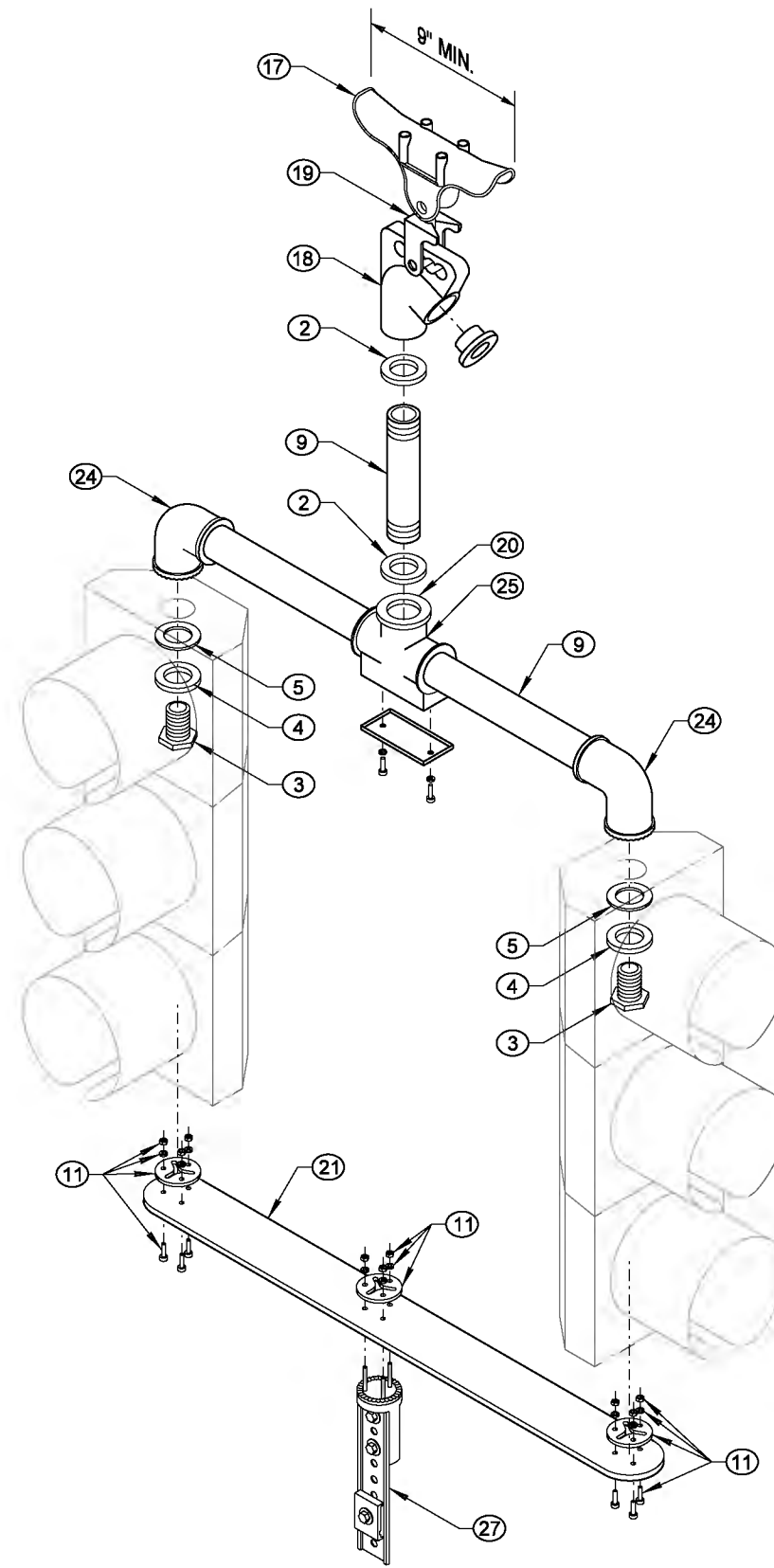
APPROVED FOR PUBLICATION



**SPAN WIRE  
TYPE P (1 HEAD)**

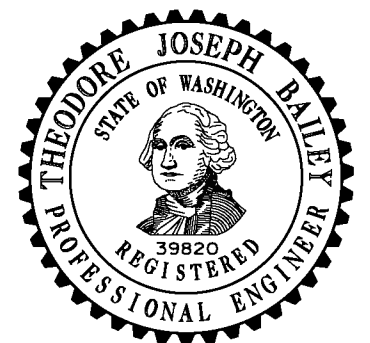


**SPAN WIRE  
TYPE P-5S  
(TYPE P WITH 5-SECTION HEAD)**



**SPAN WIRE  
TYPE Q (2 HEADS)  
TYPE R (3 HEADS)  
TYPE S (4 HEADS)**

**NOTE: BACKPLATES NOT SHOWN  
FOR CLARITY**



**SIGNAL HEAD MOUNTING  
DETAILS ~ MAST ARM AND  
SPAN WIRE MOUNTINGS  
STANDARD PLAN J-75.20-01**

SHEET 2 OF 2 SHEETS

APPROVED FOR PUBLICATION