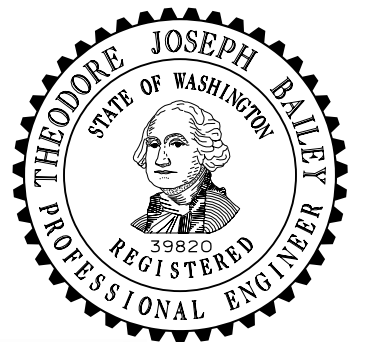


EXPLODED ISOMETRIC VIEW
ASSEMBLY DETAIL

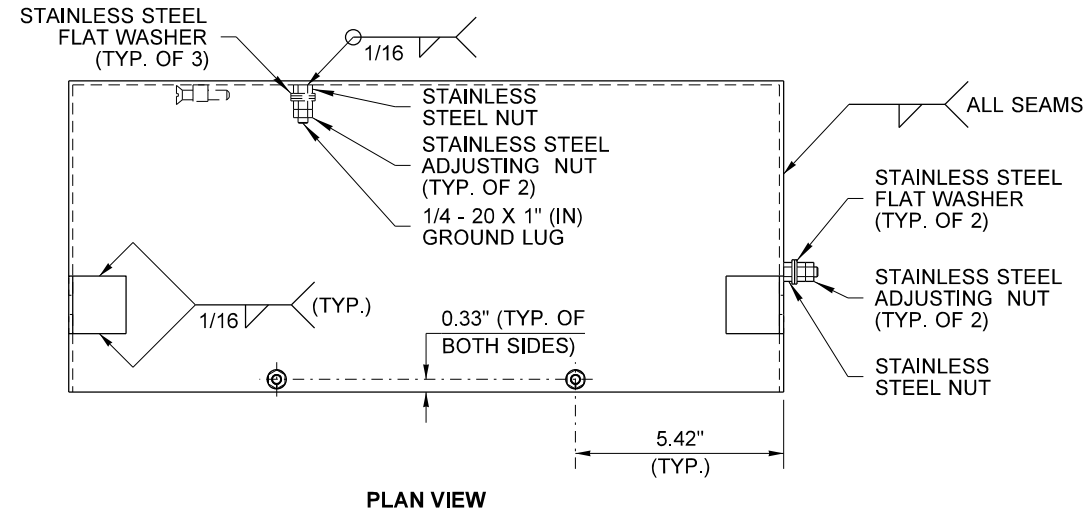


Theodore Joseph Bailey Jul 18 2017 9:54 AM

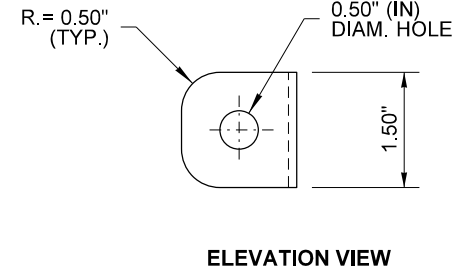
**NEMA 3R ADJUSTABLE
FLUSH-MOUNT
JUNCTION BOX
STANDARD PLAN J-40.37-02**

SHEET 1 OF 3 SHEETS

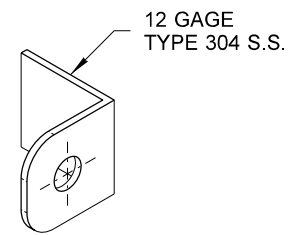
APPROVED FOR PUBLICATION



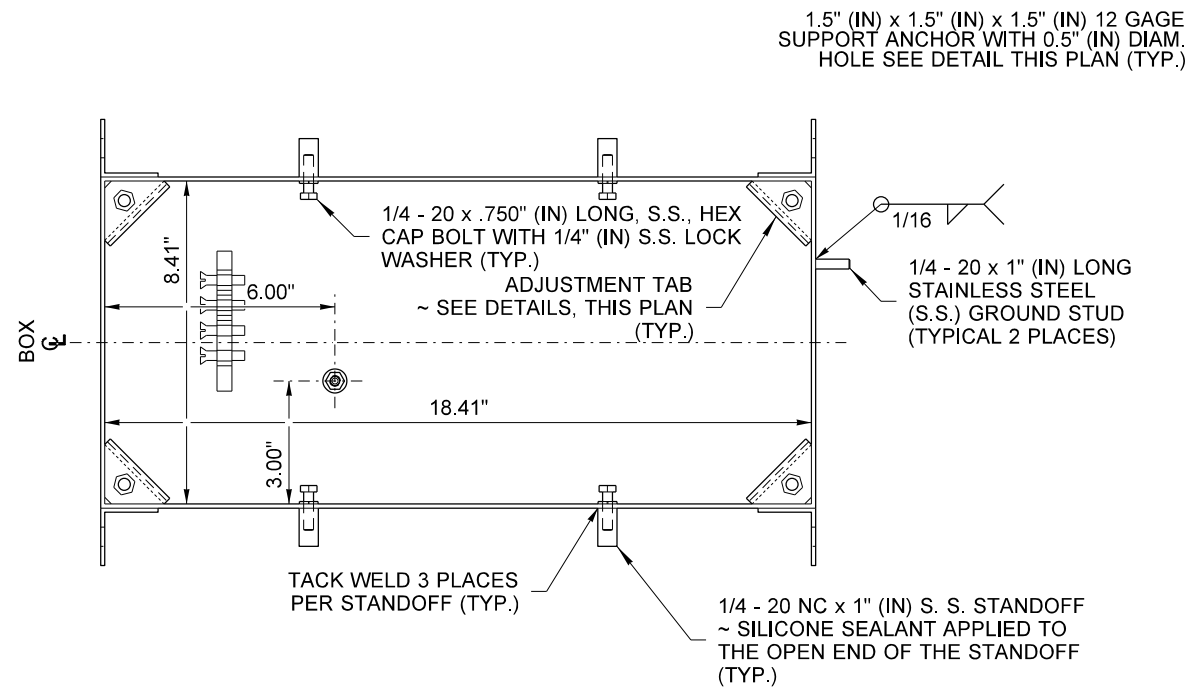
PLAN VIEW



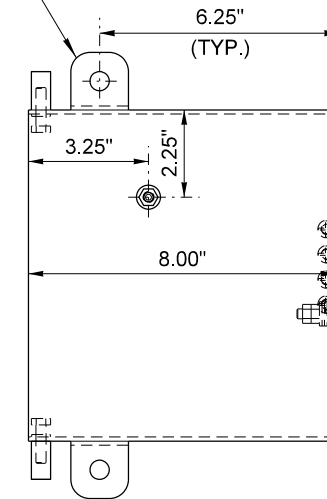
ELEVATION VIEW
 MOUNTING TAB DETAILS



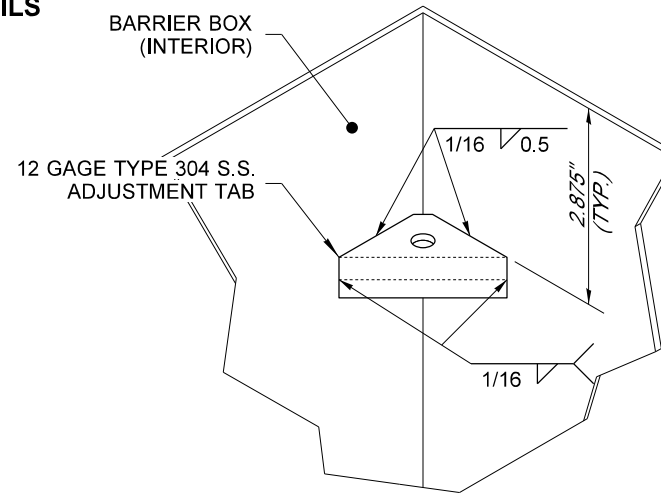
ISOMETRIC VIEW



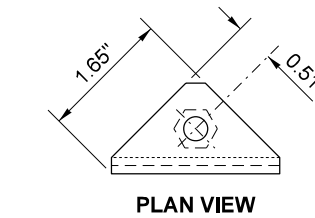
ELEVATION VIEW



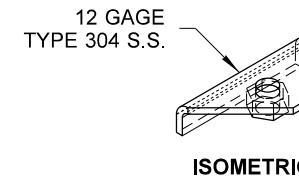
END VIEW



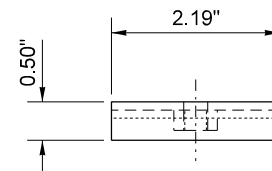
OBLIQUE VIEW
 ADJUSTMENT TAB WELD DETAIL



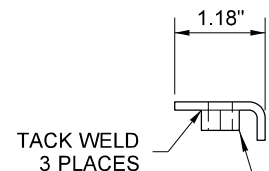
PLAN VIEW



ISOMETRIC



ELEVATION VIEW

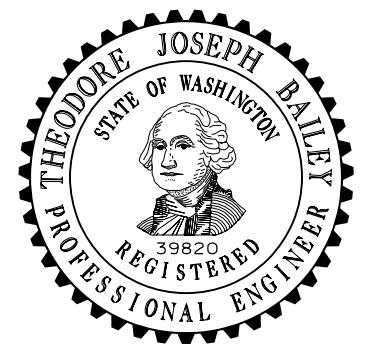


END VIEW

ADJUSTMENT TAB

NOTES

1. Junction Box shall be constructed of 12-gage, Type 304 stainless steel with steel welded seam construction. Finish shall be # 2B for barrier box and # 4 for the cover. Support anchor shall be constructed of 12-gage, Type 304 stainless steel. All hardware shall be Type A304 Stainless Steel.
2. The System Identification letters shall be 1/8" line thickness formed by engraving, stamping, or with a stainless steel weld bead. See **Standard Specification 9-29.2(4)** for details.
3. Conduit capacity = 8" (4" per end).
4. Box shall include # 8 AWG (min.) x 1 foot tinned, braided copper Bonding Jumper for bonding Box and Telescoping Top.

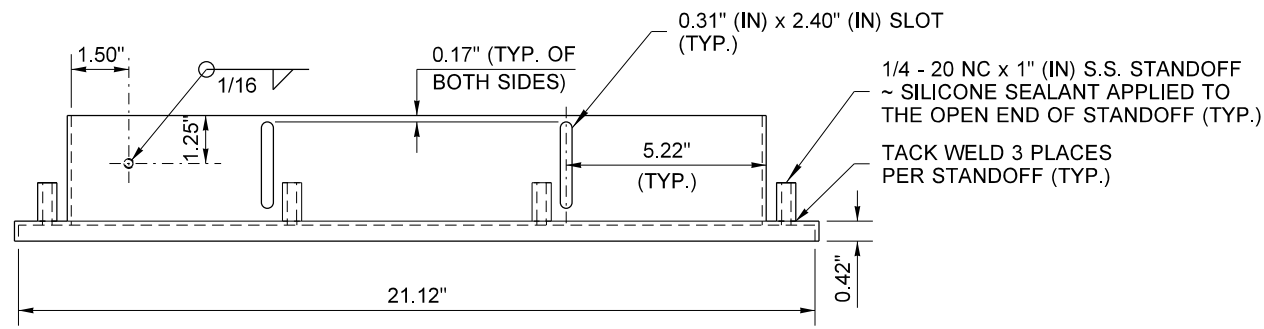


**NEMA 3R ADJUSTABLE
 FLUSH-MOUNT
 JUNCTION BOX
 STANDARD PLAN J-40.37-02**

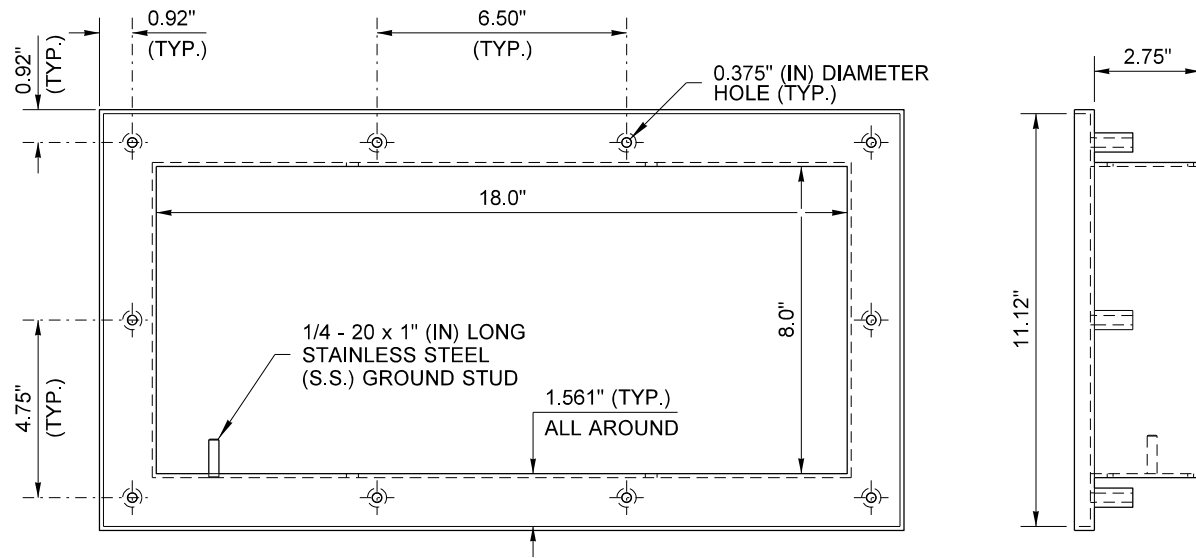
SHEET 2 OF 3 SHEETS

APPROVED FOR PUBLICATION

DRAWN BY: BILL BERENS

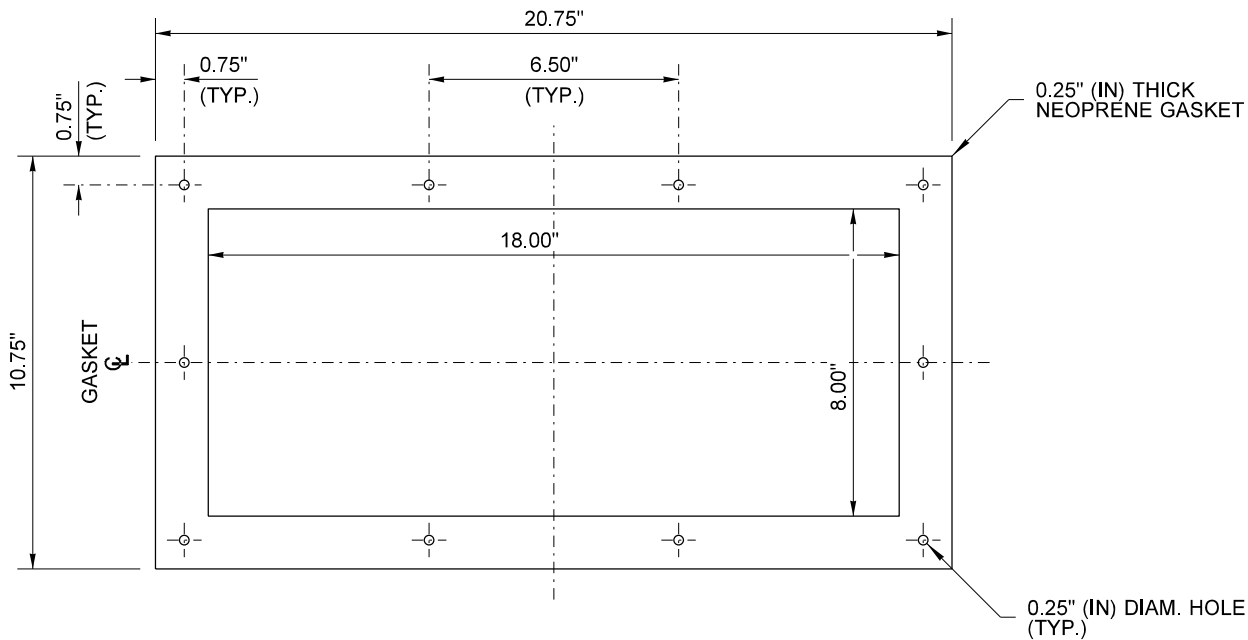


TOP VIEW



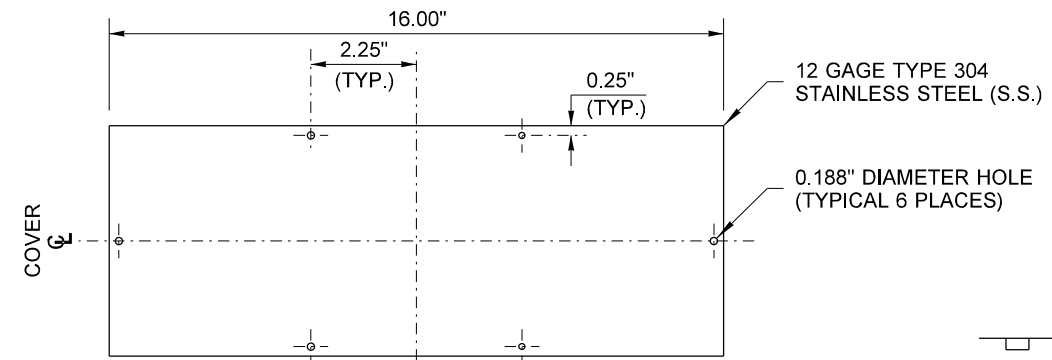
ELEVATION VIEW

② TELESCOPING TOP

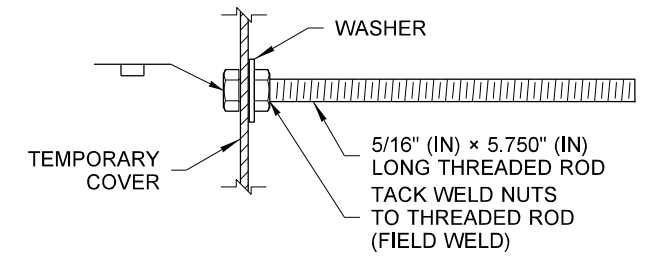


ELEVATION VIEW

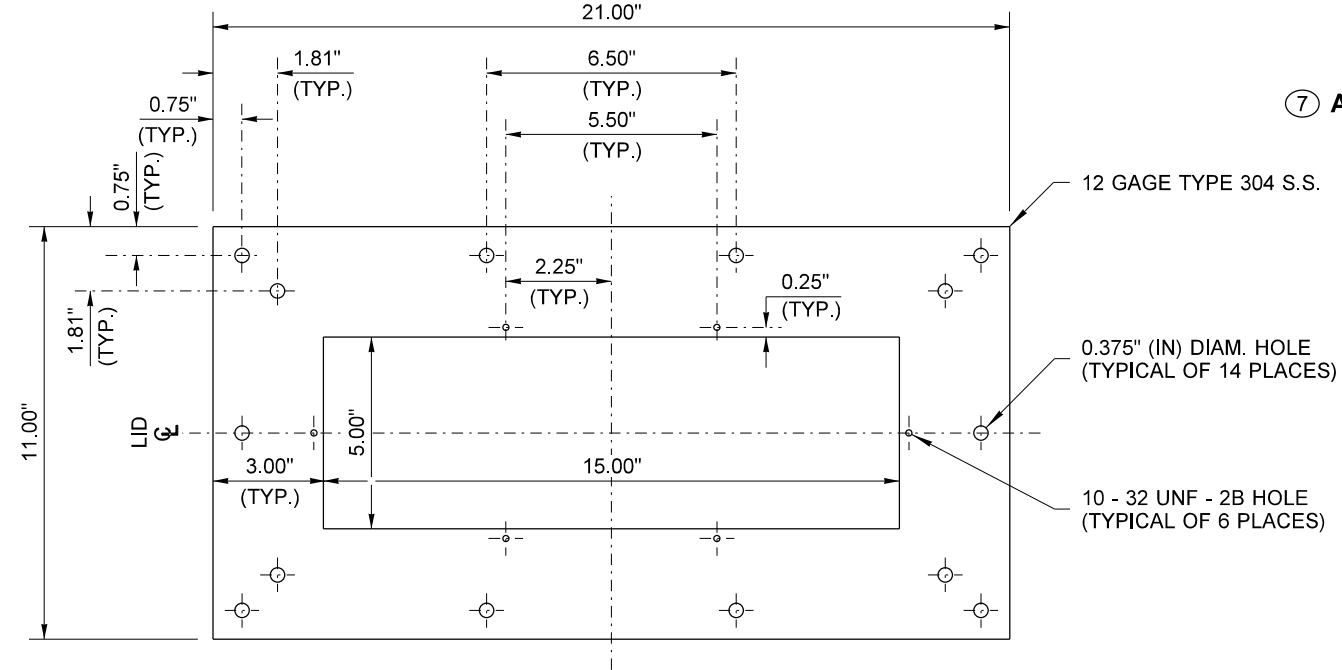
③ GASKET



ELEVATION VIEW
⑤ COVER PLATE

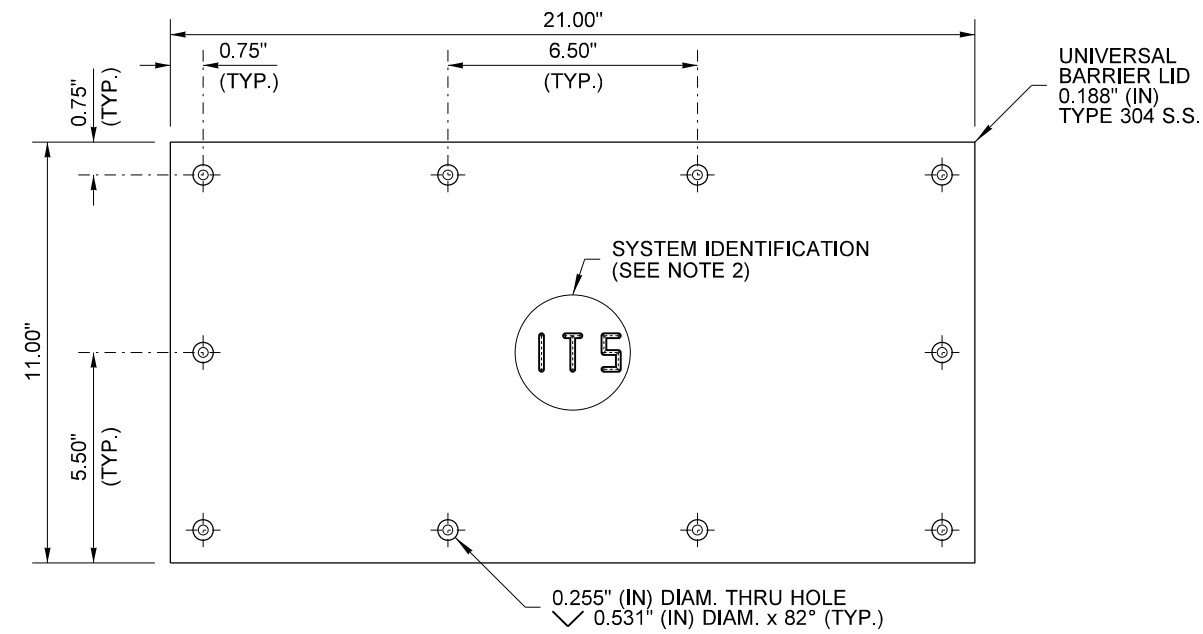


⑦ ADJUSTMENT BOLT DETAIL



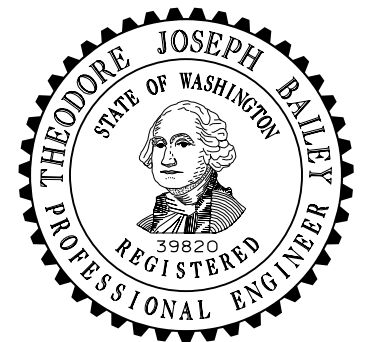
ELEVATION VIEW

④ TEMPORARY LID



ELEVATION VIEW

⑥ UNIVERSAL LID



**NEMA 3R ADJUSTABLE
FLUSH-MOUNT
JUNCTION BOX
STANDARD PLAN J-40.37-02**

SHEET 3 OF 3 SHEETS

APPROVED FOR PUBLICATION

STATE DESIGN ENGINEER
 Washington State Department of Transportation