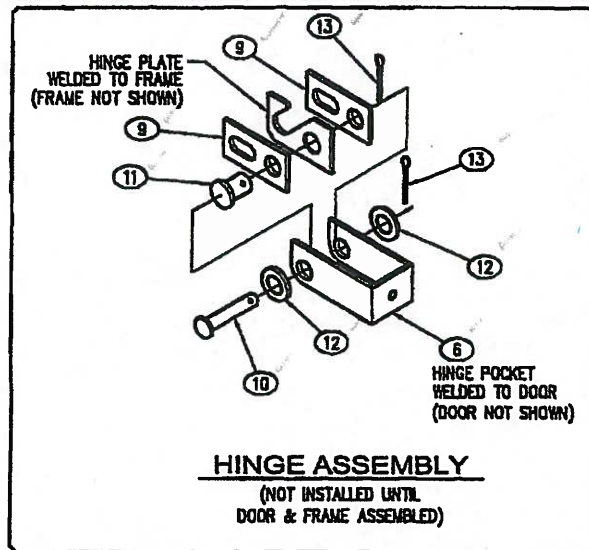
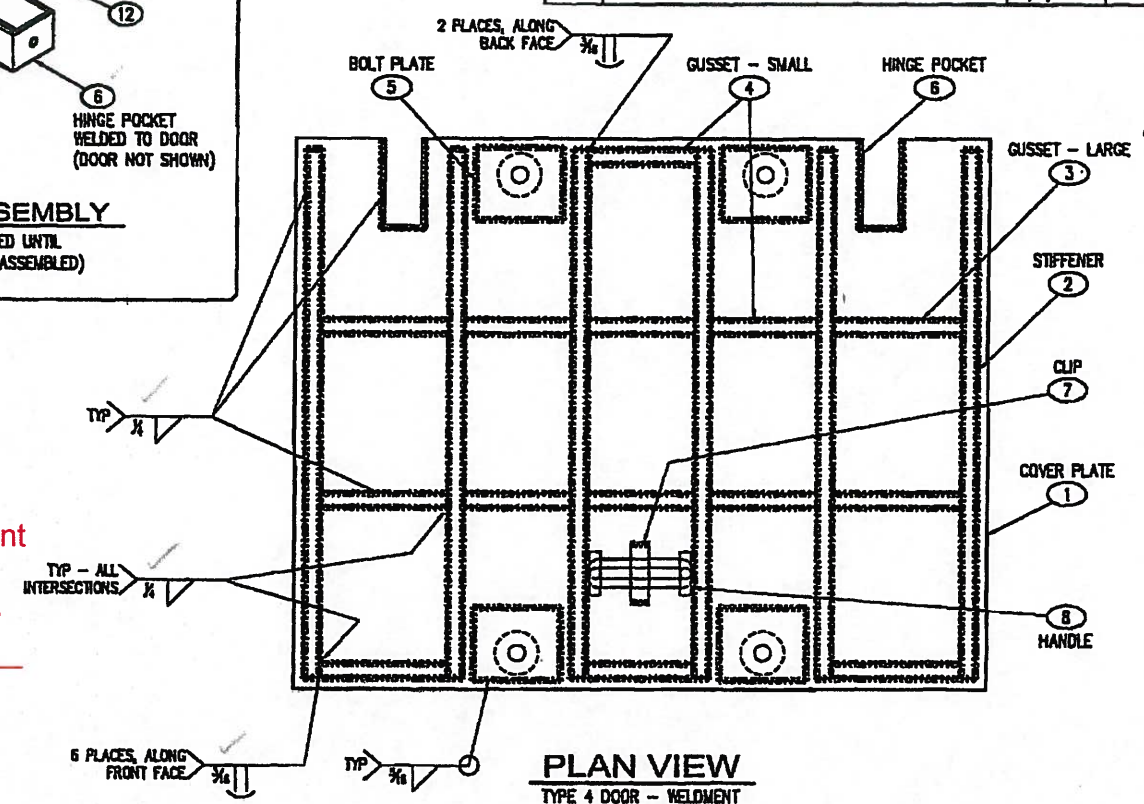


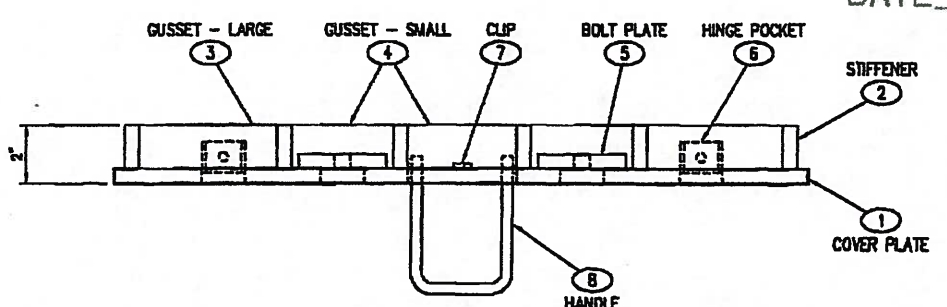
PLAN VIEW
TYPE 4 DOOR - LAYOUT
(UNDERSIDE OF DOOR)



HINGE ASSEMBLY
(NOT INSTALLED UNTIL
DOOR & FRAME ASSEMBLED)



PLAN VIEW
TYPE 4 DOOR - WELDMENT
(UNDERSIDE OF DOOR)



VIEW AA

VERIFIED
Washington State Department
of Transportation
HQ Traffic Operations Office
BY: *[Signature]*
DATE: 11/14/16

APPROVED
Washington State
Department of Transportation
HQ Traffic Operations Office
DATE: August 8, 2007 TAT

SHOP NOTE:
GRIND ALL SHARP EDGES

TOLERANCE NOTE:
OVERALL DIMENSIONS HAVE A MAXIMUM
ALLOWABLE TOLERANCE OF $\pm 1/16$ "

STRUCTURAL NOTES

- MATERIAL: ASTM A36 STRUCTURAL STEEL STANDARDS
- ASSEMBLY: AWS D1.1 WELDING STANDARDS
- MATERIAL FOR LID, FRAME & GUSSET:
LID: ASTM A788 DIAMOND PLATE ROLLED FROM PLATE COMPLYING WITH ASTM A572, GRADE 50 OR ASTM A588, BOTH WITH MIN. CWN TOUGHNESS OF 20 ft-lb AT 40° F
FRAME & STIFFENER PLATES: ASTM A572, GRADE 50 OR ASTM A588, BOTH WITH MIN. CWN TOUGHNESS OF 20 ft-lb AT 40° F
HANDLE: ASTM A36 STEEL
ANCHORS (STUDS): SECTION 9-06.15
BOLTS, NUTS, WASHERS: ASTM F593 OR A193, TYPE 304 OR 316

NOTES

- COVER TO BE PAINTED AFTER FABRICATION
- ALL WELDS TO BE 3/16" FILLET WELDS UNLESS OTHERWISE NOTED
- ASSEMBLY PARTS PROVIDED BY WILSONVILLE (NOT SHOWN):
9 SS HINGE SIDE PLATE
10 SS HINGE PIN
11 SS HINGE PIN
12 SS WASHER
13 SS COTTER PIN
14 SS RETAINING BOLT

REV.	REVISION	DATE	BY
A	REVISED BOM	10/4/04	JG
B	REVISED PER CUSTOMER RED MARKS	1/6/05	JG
D	REVISED BOM	4/6/05	JG
E	REVISED BOM	1/22/07	TMB
F	NO CHANGES	2/5/07	TMB
G	REVISED BOM	3/2/07	TMB
H	ADDED HINGE ASSEMBLY DETAIL	4/17/07	TMB
I	NO CHANGES	6/4/07	TMB

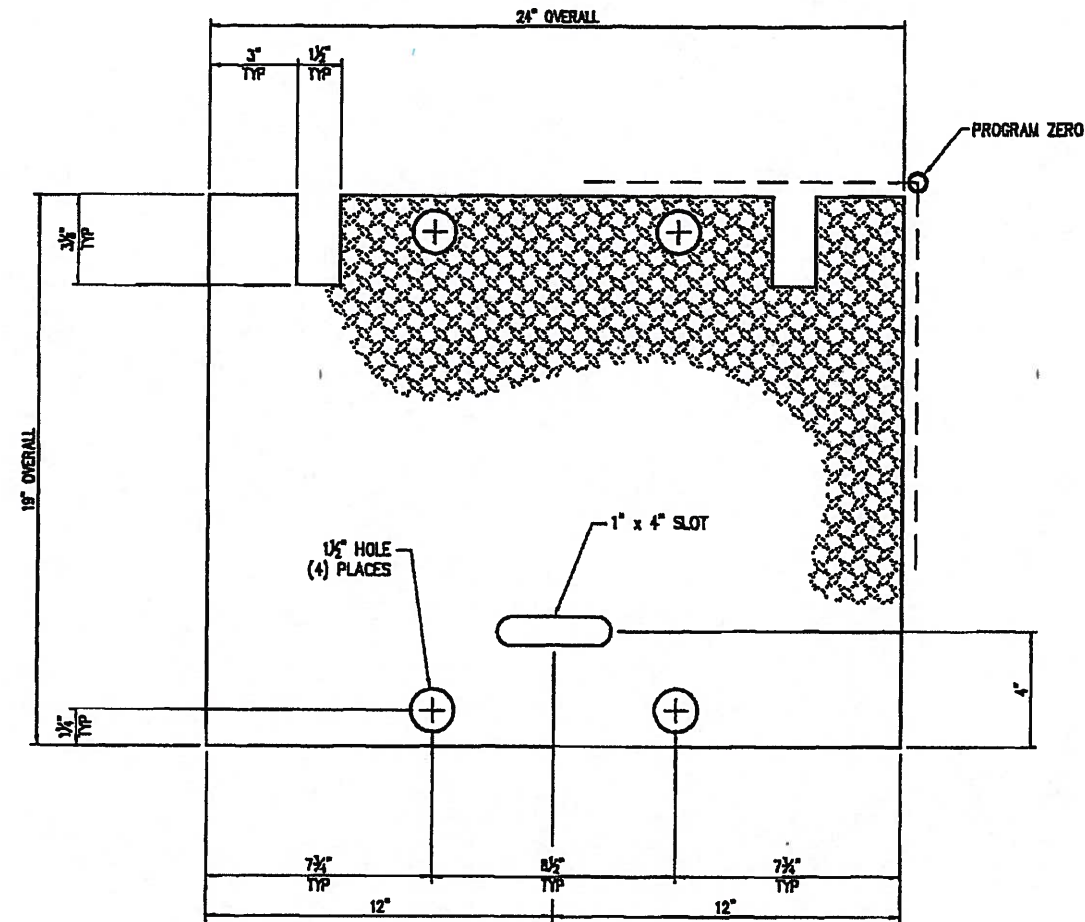
PART LIST						B.O.M.	
PART	PART NAME	DESCRIPTION	CUT SIZE	QTY.	UV No.	TOTAL	
1	DIAMOND PLATE COVER	DIAMOND PLATE, 72" x 120" x 1/2" (SEE SHT 2)	(SEE SHT 2)	1	5540085	2.07 lbs	
2	STIFFENER	FLATBAR, 1/2" x 1 5/8"	18 1/4"	6		25.20 lbs	
3	GUSSET - LARGE	FLATBAR, 1/2" x 1 5/8"	4 1/2"	6		8.22 lbs	
4	GUSSET - SHORT	FLATBAR, 1/2" x 1 5/8"	3 3/4"	8		8.91 lbs	
5	BOLT PLATE	---	(SEE SHT 3)	4		4.00 lbs	
6	HINGE POCKET	11 GA. FLATBAR	---	2	6310040	2.00 lbs	
7	CLIP	FLATBAR, 3/16" x 3/4"	2"	1	5520027	.08 lbs	
8	HANDLE	ROD, 1/2"	(SEE SHT3)	1		1.00 lbs	
9	SS HINGE SIDE PLATE	PLATE, 2-1/2" x 1-1/4"	---	4		4.00 lbs	
10	SS CLEVIS HINGE PIN	PIN, 3/8" x 2 1/4"	---	2		2.00 lbs	
11	SS CLEVIS HINGE PIN	PIN, 1/2" x 1"	---	2		2.00 lbs	
12	SS WASHER	WASHER, 9/16"	---	4		4.00 lbs	
13	SS COTTER PIN	COTTER PIN, 2"	---	4		4.00 lbs	
14	SS RETAINING BOLT	1/2" x 1-1/2"	---	4		4.00 lbs	

ITEM	QUANTITY	PART	DESCRIPTION	QVAL	SIZE	TOTAL WT. LBS.
SALES INFORMATION						
CUSTOMER STANDARD PRODUCT		J11 TYPE 4 COVER - LAYOUT & WELDMENT				
SALES S.O. #		WSDOT				
DRAWN JG	LIVE #	SCALE 3"=1'-0"	APPROVED	DWG NO.	REV.	
CHECKED	DATE 6/21/04	SHEET 1 OF 5	WEIGHT	CC-0404	1	
THIS DOCUMENT IS THE PROPERTY OF OLDCASTLE PRECAST, INC. IT IS LOANED TO YOU FOR YOUR USE ONLY AND SHALL NOT BE USED IN ANY WAY WITHOUT THE WRITTEN PERMISSION OF OLDCASTLE PRECAST, INC. COPYRIGHT © 2004 Oldcastle Precast, Inc. All Rights Reserved.						
				a division of 		



10/26/16

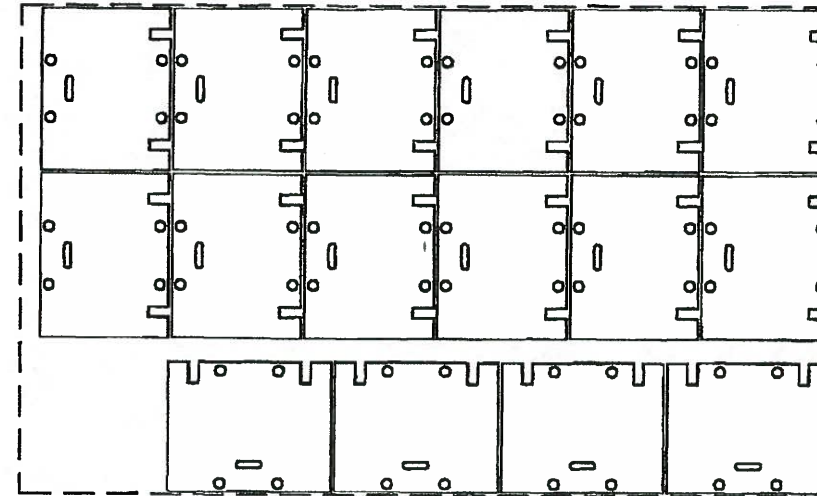
LTR.	REVISION	DATE	BY
A	CHANGED PLATE TO 72" x 120"	11/4/04	JG
B	ADD SHOP NOTE	2/15/05	JG
E	NO CHANGES	1/22/07	TMB
F	NO CHANGES	2/5/07	TMB
G	NO CHANGE	3/2/07	TMB
H	NO CHANGE	4/17/07	TMB
I	NO CHANGE	6/4/07	TMB



PLAN VIEW
TYPE 4 DOOR - CUT OUT

NOTES:

1. MATERIAL: 1/2" DIAMOND PLATE (SEE STRUCTURAL NOTE 3, SHEET 1 OF 5)
2. LAYER CUTA IS FOR SINGLE CUT PROGRAM (CC-0404A)
3. LAYER CUTB IS FOR MULTIPLE CUT PROGRAM (CC-0404B) - SEE DETAIL



DETAIL
MATERIAL: 1/2" DIAMOND PLATE
72" x 120" SHEET

SHOP NOTE:
CUT WITH DIAMOND PLATE FACE DOWN.
ADJUST KERF OFFSET WHEN CUTTING TO APPROX. .08 TO MAINTAIN OVERALL DIMENSIONS. CUT 1 TEST DOOR TO ENSURE OFFSET IS CORRECT.

VERIFIED

Washington State Department of Transportation
HQ Traffic Operations Office

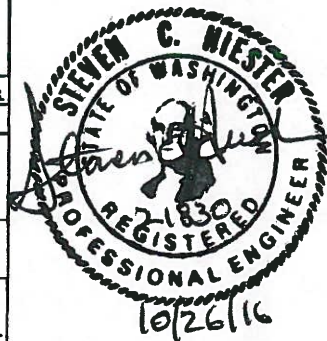
BY: *[Signature]* DATE: 11/14/10

APPROVED

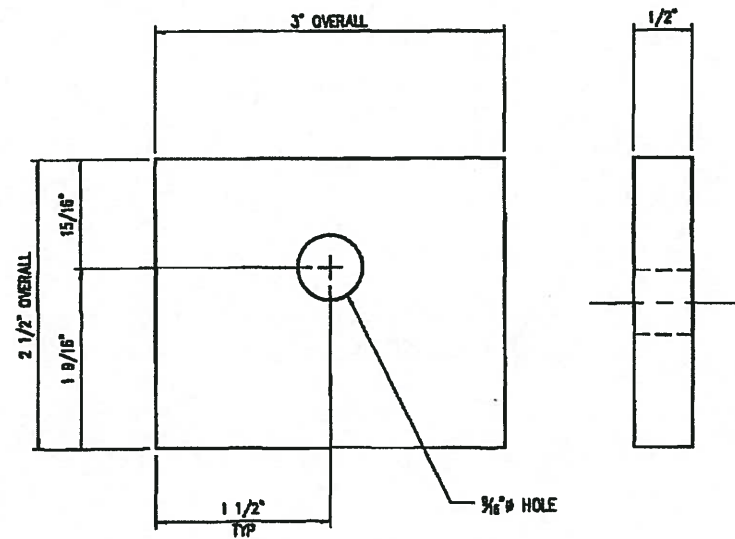
Washington State
Department of Transportation
HQ Traffic Operations Office

DATE August 8, 2007 TAT

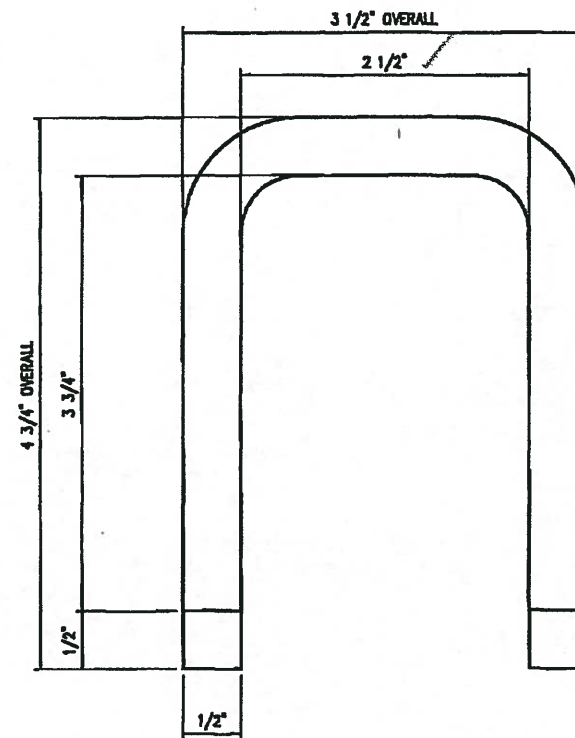
ITEM	QUANTITY	PART	DESCRIPTION	QUAN.	SIZE	TOTAL WT. LBS.
BILL OF MATERIAL						
SALES INFORMATION		J11 TYPE 4 COVER - CUT LAYOUT				
CUSTOMER STANDARD PRODUCT		WSDOT				
SALES	S.A. /					
DRAWN	JG	LINE #	SCALE 3"=1'-0"	APPROVED	DWG NO.	REV.
CHECKED	DATE 6/21/04	SHEET 2 OF 5	WEIGHT		CC-0404	1
<small>THIS DOCUMENT IS THE PROPERTY OF OLDCASTLE PRECAST, INC. IT IS SUBMITTED FOR REFERENCE PURPOSES ONLY AND SHALL NOT BE USED IN ANY WAY WITHOUT THE WRITTEN PERMISSION OF OLDCASTLE PRECAST, INC. COPYRIGHT © 2004 Oldcastle Precast, Inc. All Rights Reserved.</small>						
UTILITY VAULT™ <small>PO Box 588 Adams, WA 98207-0588 Tel: 509-833-4338 Fax: 509-833-4339</small>				<small>a division of</small> Oldcastle Precast, Inc.		



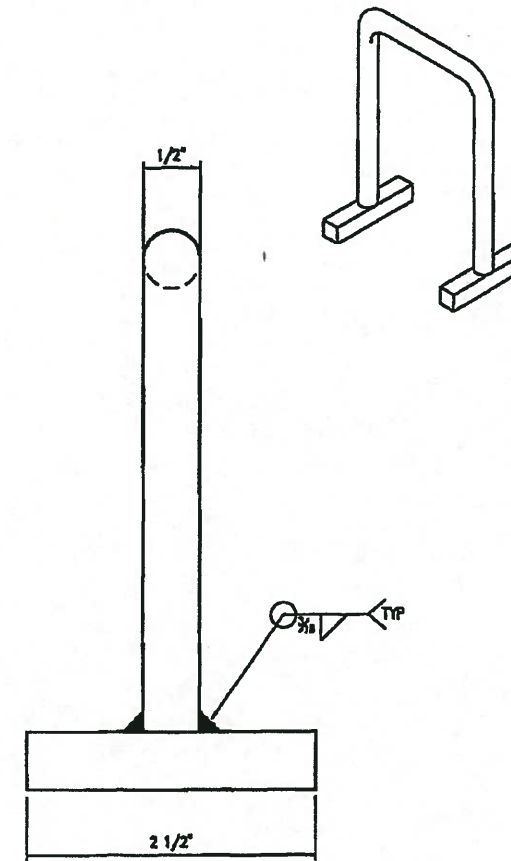
REV.	REVISION	DATE	BY
A	REVISED BOM	10/4/04	JG
B	MODIFIED BOLT PLATE FOR EASE OF WELDING	1/6/05	JG
D	REVISED BOM	4/6/05	JG
E	NO CHANGES	1/22/07	TMB
F	NO CHANGES	2/5/07	TMB
G	CHANGED HANDLE TO 1/2" ROD	3/2/07	TMB
H	NO CHANGE	4/17/07	TMB
I	NO CHANGE	6/4/07	TMB



PLAN VIEW
BOLT PLATE



PLAN VIEW
HANDLE



PART LIST					B.O.M.	
PART	PART NAME	DESCRIPTION	CUT SIZE	QTY.	UV No.	TOTAL
1	BOLT PLATE	FLATBAR, 1/2" x 3"	2 1/2"	4	5520197	4.25 lbs
2	HANDLE	ROD, 1/2"	11"	1	5520222	0.47 lbs
3	HANDLE RETAINER	SQUARE BAR 3/8"	2 1/2"	2	5520220	0.15 lbs

VERIFIED

Washington State Department of Transportation
HQ Traffic Operations Office

BY: AK J DATE: 11/14/10

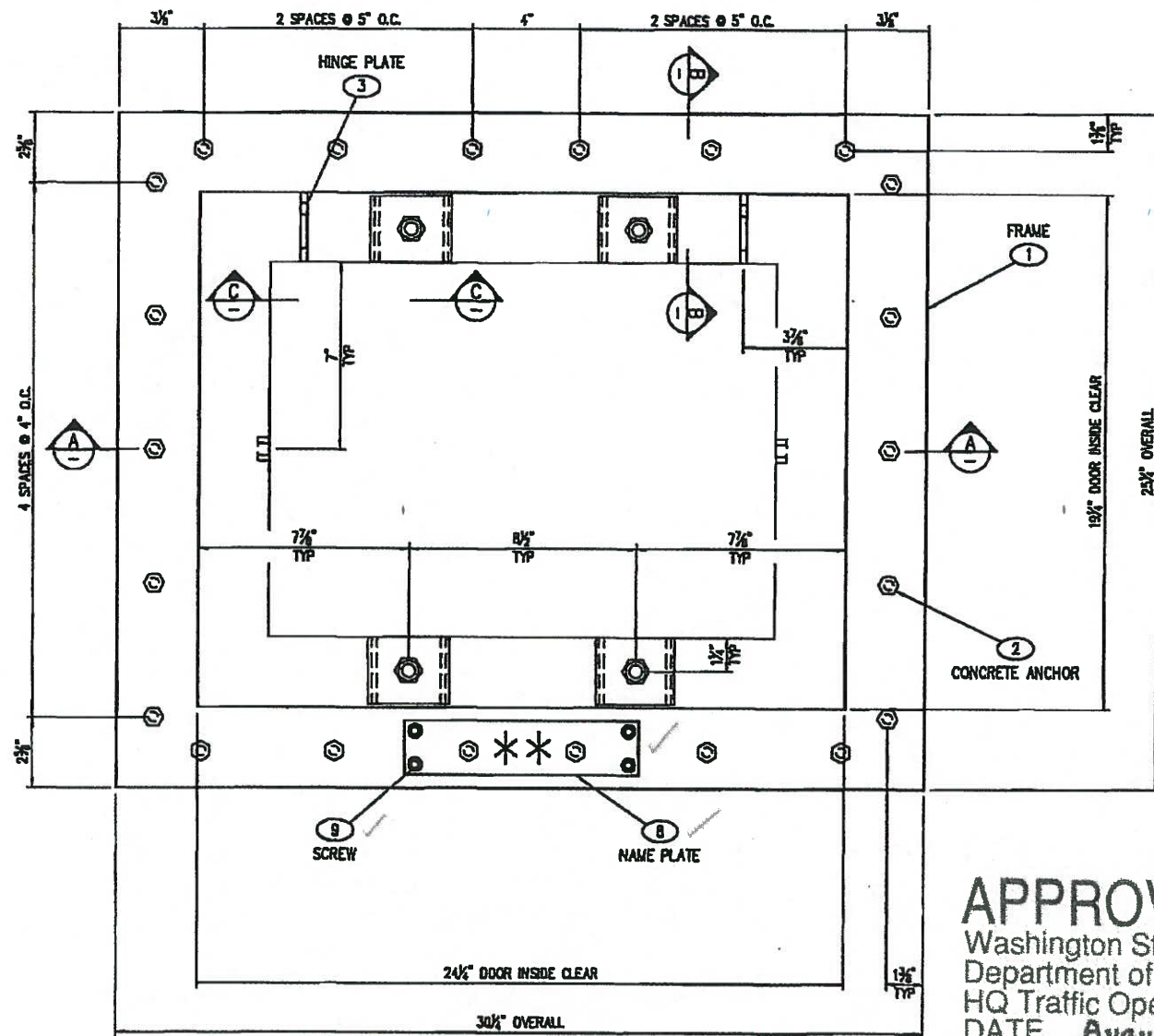
APPROVED

Washington State
Department of Transportation
HQ Traffic Operations Office

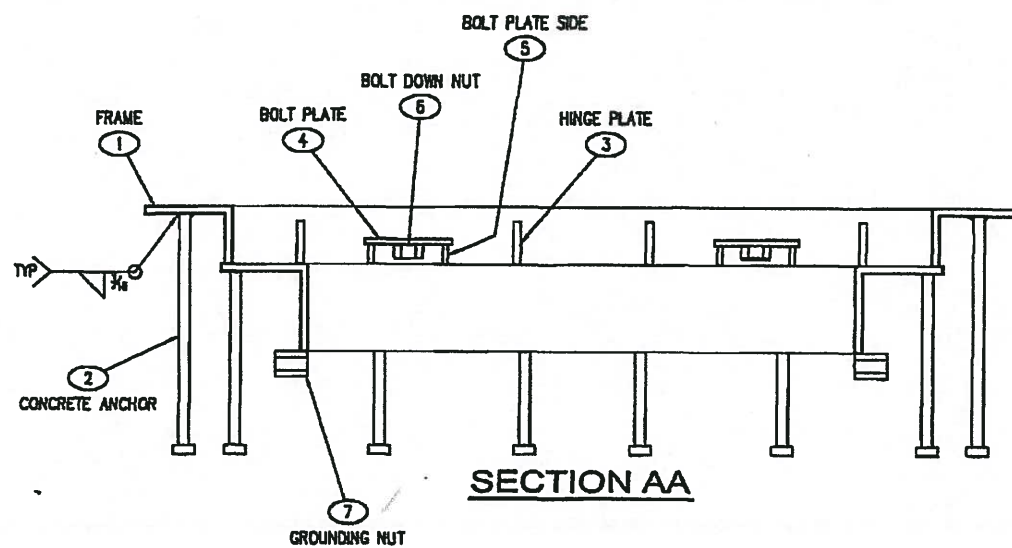
DATE: August 8, 2007 TAT

ITEM	QUANTITY	PART	DESCRIPTION	QUAN.	SIZE	TOTAL WT. LBS.
SALES INFORMATION		BILL OF MATERIAL				
CUSTOMER STANDARD PRODUCT		J11 TYPE 4 COVER - PARTS LAYOUT				
SALES S.O. #		STANDARD PRODUCT				
DRAWN JG	LINE #	SCALE FULL	APPROVED	DMO NO.	REV.	
CHECKED	DATE 6/21/04	SHEET 3 OF 5	WEIGHT	CC-0404	1	
THIS DOCUMENT IS THE PROPERTY OF OLDCASTLE PRECAST, INC. IT IS LOANED FOR REFERENCE PURPOSES ONLY AND SHALL NOT BE USED IN ANY WAY WITHOUT THE PERMISSION OF SAID COMPANY. COPYRIGHT © 2004 Oldcastle Precast, Inc. All Rights Reserved.		UTILITY VAULT a division of Oldcastle Precast, Inc.				

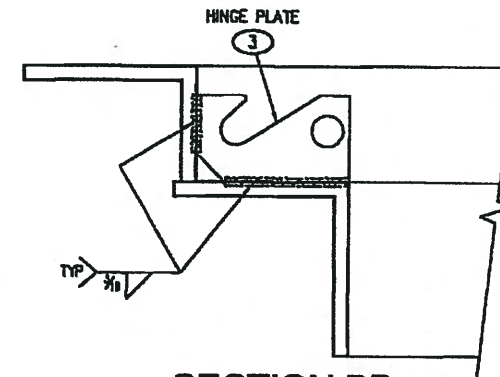
10/26/16



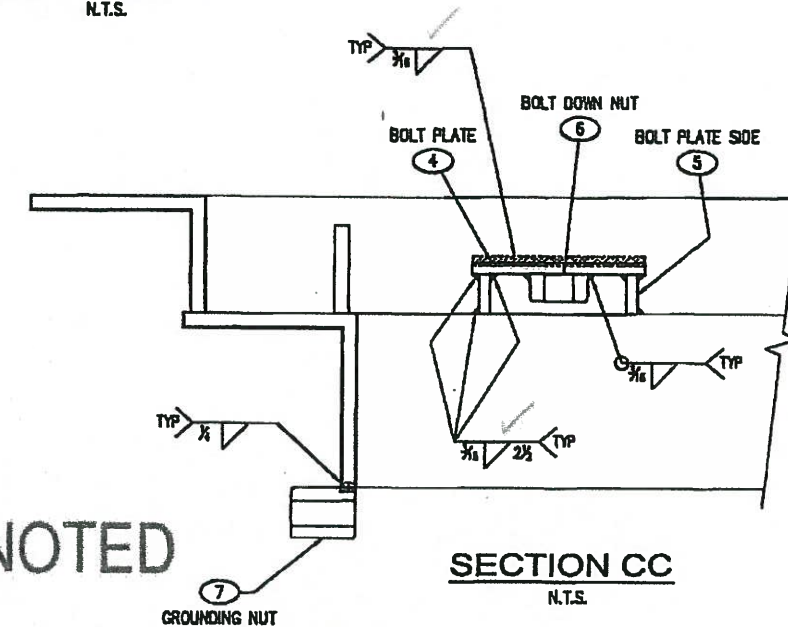
PLAN VIEW



SECTION AA



SECTION BB
N.T.S.



SECTION CC
N.T.S.

LTR.	REVISION	DATE	BY
A	REVISED BOLT DOWN LOCATIONS	6/25/04	JG
B	REVISED BOM	10/4/04	JG
C	REVISED PER CUSTOMER RED MARKS	1/6/05	JG
D	REVISED BOM	4/6/05	JG
E	NO CHANGES	1/22/07	TMB
F	CHANGED GROUNDING NUT TO A 3/8" COUPLER NUT	2/5/07	TMB
G	NO CHANGE	3/2/07	TMB
H	NO CHANGE	4/17/2007	TMB
I	ADDED NAME PLATE	6/4/07	TMB

APPROVED AS NOTED
 Washington State
 Department of Transportation
 HQ Traffic Operations Office
 DATE August 8, 2007 TAT

VERIFIED

Washington State Department of Transportation
 HQ Traffic Operations Office
 BY: *[Signature]* DATE: 11/14/16

SHOP NOTE:
 GRIND ALL SHARP EDGES

TOLERANCE NOTE:
 OVERALL DIMENSIONS HAVE A MAXIMUM ALLOWABLE TOLERANCE OF ± 1/16"

STRUCTURAL NOTES

- MATERIAL: ASTM A36 STRUCTURAL STEEL STANDARDS
- ASSEMBLY: AWS D1.1 WELDING STANDARDS
- SEE STRUCTURAL NOTE 3, SHEET 1 OF 5

NOTES

- FRAME TO BE PAINTED AFTER FABRICATION
- ALL WELDS TO BE 3/16" FILLET WELDS UNLESS OTHERWISE NOTED
- BOND LID TO FRAME - SEE NOTE 11, ON WSDOT DETAIL SHEET
- PARTS PROVIDED BY WILSONVILLE:
 9 SCREW

PART LIST					B.O.M.	
PART	PART NAME	DESCRIPTION	CUT SIZE	QTY.	UV No.	TOTAL
1	FRAME		(SEE SHT 5)	1		1.00
2	CONCRETE ANCHOR (Stud)	BOX 1/2" X 8" GALV. 9-06.15		22	5310445	22.00
3	HINGE PLATE	FLATBAR, 2 3/4" x 1 1/2"		2	5210800	2.00
4	BOLT PLATE	FLATBAR, 1/4" x 3"	2 1/2"	4	5520189	2.12 lbs
5	BOLT PLATE SIDE	FLATBAR, 1/4" x 3"	11/16"	8	5520189	1.17 lbs
6	BOLT DOWN NUT	HEX NUT, 1/2" SS		4		4.00
7	GROUNDING NUT	COUPLER NUT, 3/8" x 1-1/8", SS		2		2.00
8	NAME PLATE	FLATBAR 1/8" x 2", SS	(SEE SHT 5)	1		
9	SCREW	1/4"-20 x 3/4" ALLEN FLATHEAD, SS		4		

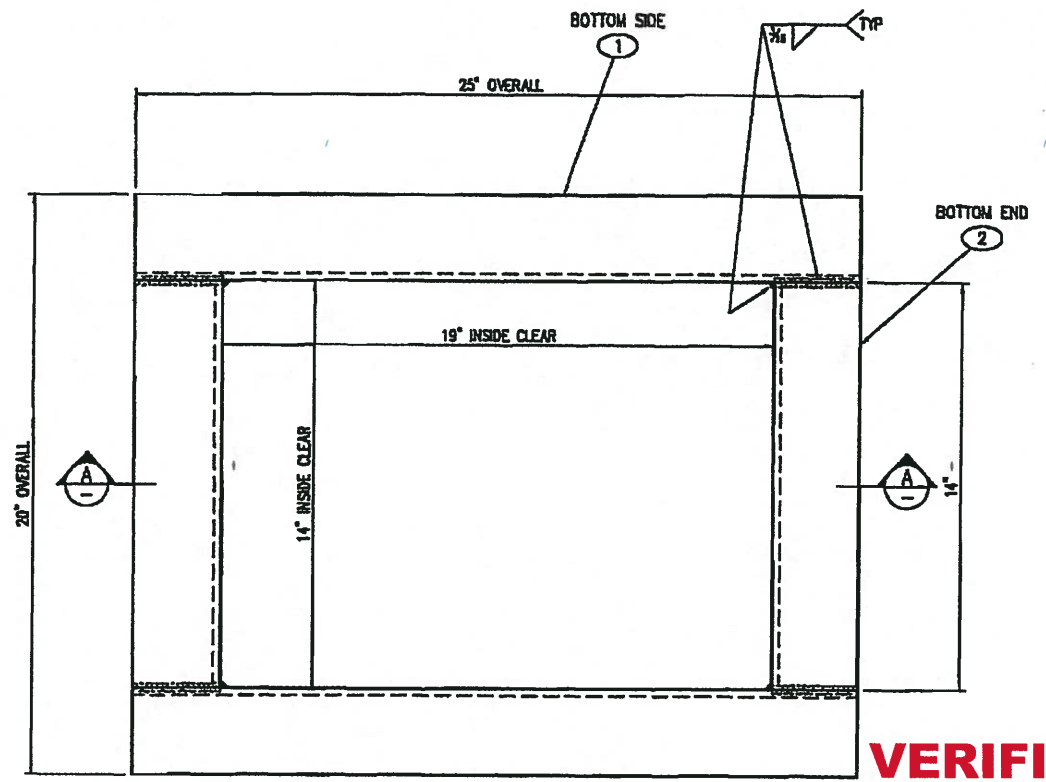
ITEM	QUANTITY	PART	DESCRIPTION	QUAN.	SIZE	TOTAL WT. LBS.
SALES INFORMATION						
CUSTOMER: STANDARD PRODUCT		J11 TYPE 4 FRAME - LAYOUT & WELDMENT				
SALES: S.O. /		WSDOT				
DRAWN: JG	LINE: /	SCALE: 3/4"=1'-0"	APPROVED:	DWG. NO.:	REV.:	
CHECKED:	DATE: 6/23/04	SHEET: 4 OF 5	WEIGHT:	CC-0404	1	
<small>THIS DOCUMENT IS THE PROPERTY OF OLDCASTLE PRECAST, INC. IT IS LOANED TO YOU FOR YOUR USE ONLY AND SHALL NOT BE USED IN ANY WAY UNLESS AUTHORIZED BY THE INVENTOR OF THIS COMPANY. COPYRIGHT © 2004 Oldcastle Precast, Inc. All Rights Reserved.</small>						



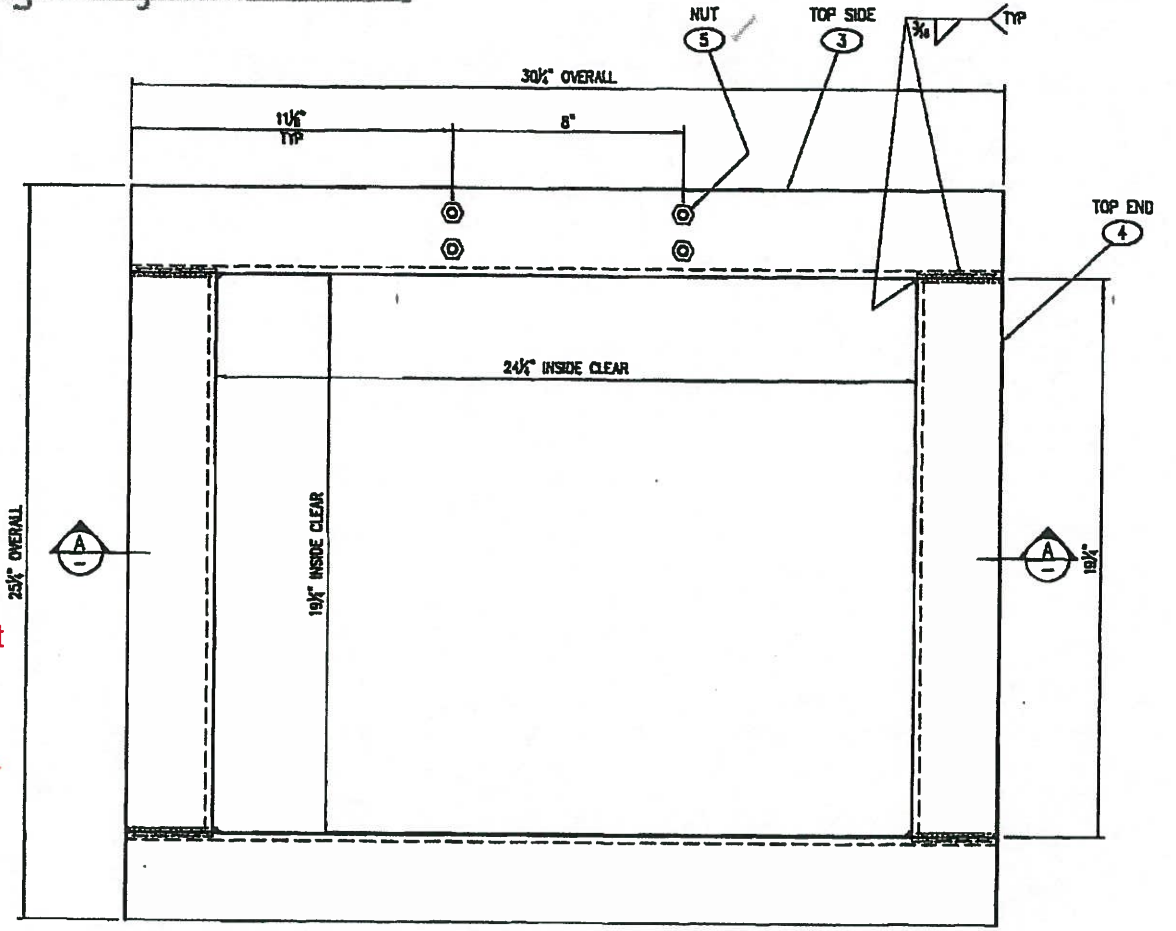
10/26/16

LTR.	REVISION	DATE	BY
A	REVISED PER CUSTOMER RED MARKS	1/6/05	JG
D	REVISED BOM	4/8/05	JG
E	NO CHANGES	1/22/07	TMB
F	NO CHANGES	2/5/07	TMB
G	NO CHANGES	3/2/07	TMB
H	NO CHANGES	4/17/07	TMB
I	ADDED NAME PLATE	6/4/07	TMB

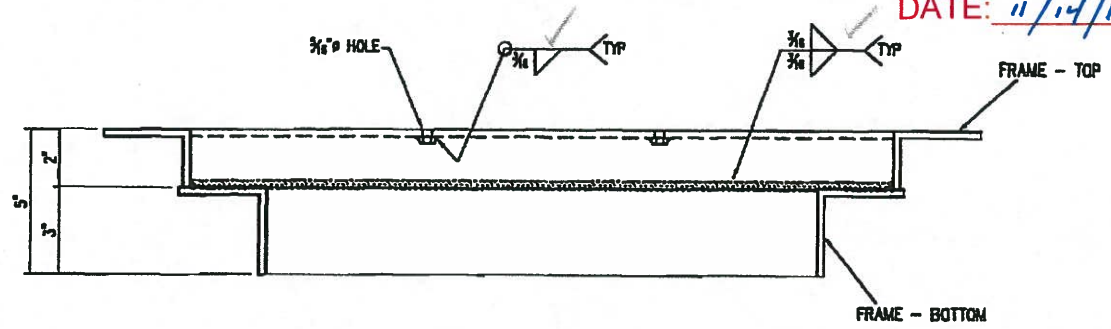
APPROVED
 Washington State
 Department of Transportation
 HQ Traffic Operations Office
 DATE August 8, 2007 TAT



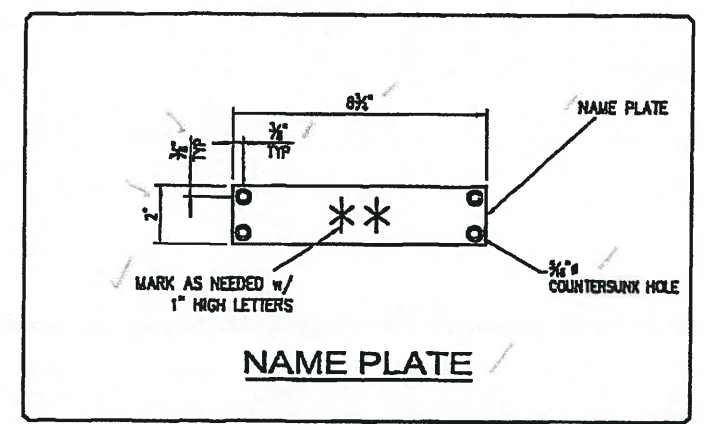
PLAN VIEW
 TYPE 4 FRAME - BOTTOM



PLAN VIEW
 TYPE 4 FRAME - TOP



SECTION AA



NAME PLATE

VERIFIED
 Washington State Department
 of Transportation
 HQ Traffic Operations Office
 BY: [Signature]
 DATE: 11/14/16

SHOP NOTE:
 GRIND ALL SHARP EDGES

TOLERANCE NOTE:
 OVERALL DIMENSIONS HAVE A MAXIMUM
 ALLOWABLE TOLERANCE OF $\pm 1/16$ "

- STRUCTURAL NOTES**
- MATERIAL: ASTM A36 STRUCTURAL STEEL STANDARDS
 - ASSEMBLY: AWS D1.1 WELDING STANDARDS
 - SEE STRUCTURAL NOTE 3, SHEET 1 OF 5

PART LIST						B.O.M.	
PART	PART NAME	DESCRIPTION	CUT SIZE	QTY.	UV No.	TOTAL	
1	FRAME - SIDE BOTTOM	ANGLE, 3" x 3" x 1/4"	25"	2		20.41 lbs	
2	FRAME - END BOTTOM	ANGLE, 3" x 3" x 1/4"	14"	2		11.43 lbs	
3	FRAME - SIDE TOP	ANGLE, 2" x 3" x 1/4"	30 1/4"	2		20.88 lbs	
4	FRAME - END TOP	ANGLE, 2" x 3" x 1/4"	19 1/4"	2		13.18 lbs	
5	NUT	1/4"-20 HEX NUT, SS		4			
8	NAME PLATE	FLATBAR 1/8" x 2", SS	8 3/4"	1			

* SPECIAL ORDER: FLATBAR 1/8" x 2", STAINLESS

ITEM	QUANTITY	PART	DESCRIPTION	QTY.	SIZE	TOTAL WGT. LBS.
SALES INFORMATION		BILL OF MATERIAL				
CUSTOMER STANDARD PRODUCT		J11 TYPE 4 FRAME - FRAME LAYOUT				
SALES		WSDOT				
DRAWN JG	LINE #	SCALE 3"=1'-0"	APPROVED	DRWG NO.	REV.	
CHECKED	DATE 6/23/04	SHEET 5 OF 5	WEIGHT	CC-0404	1	
THIS DOCUMENT IS THE PROPERTY OF OLDCASTLE PRECAST, INC. IT IS LOANED TO YOU FOR YOUR USE ONLY AND SHALL NOT BE USED IN ANY WAY IN VIOLATION OF THE INTERESTS OF OLDCASTLE PRECAST, INC. COPYRIGHT © 2004 Oldcastle Precast, Inc. All Rights Reserved.						



10/26/16